

# Review of Climate Impacts Fall Seminar

ESPA CAMP Meeting

October 25, 2007

Hagerman, Idaho

Brian Patton

Idaho Department of Water Resources

# Topics

- Review of 2007 water year
- Forecast for 2008 water year

# Review of 2007 Water Year

- Below average snow pack followed by melting and runoff a month earlier than normal.
- Higher than average temperatures and below average precipitation during the growing season.

# Review of 2007 Water Year

- 2007 April-July Runoff

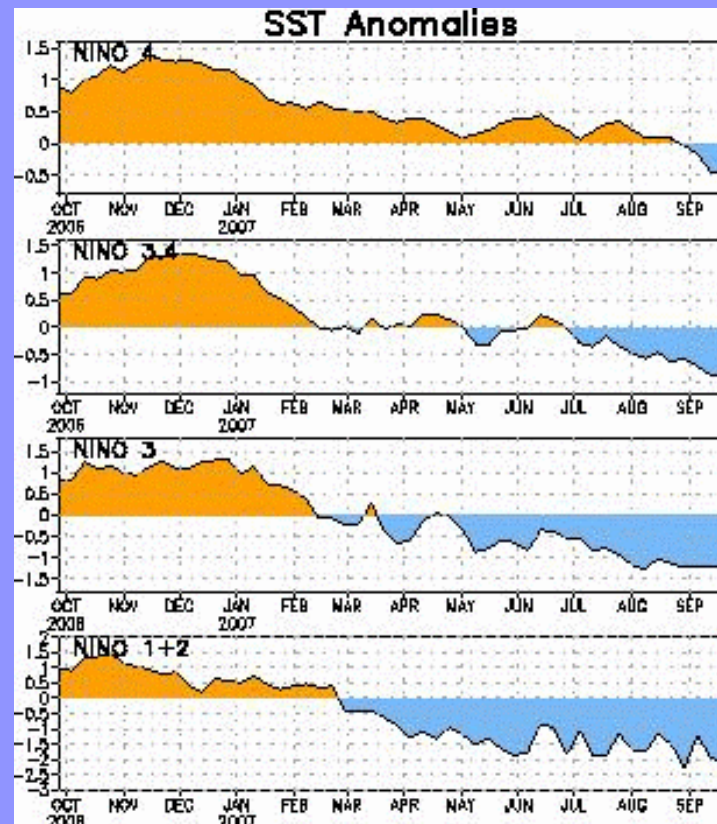
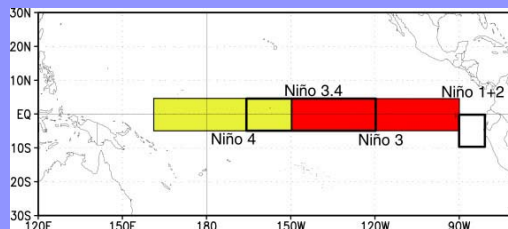
– Snake River at Heise*	58% of average
– Big Wood at Hailey	45% of average
– Boise River nr Boise*	48% of average
– Payette River at HSB*	57% of average
– Weiser River at Weiser	36% of average
– Snake River at Weiser	45% of average
– Salmon River at Whitebird	64% of average
– St. Joe at Calder	71% of average
– Bear River at Stewart Dam	11% of average

\* unregulated flow

# Forecast for 2008 water year

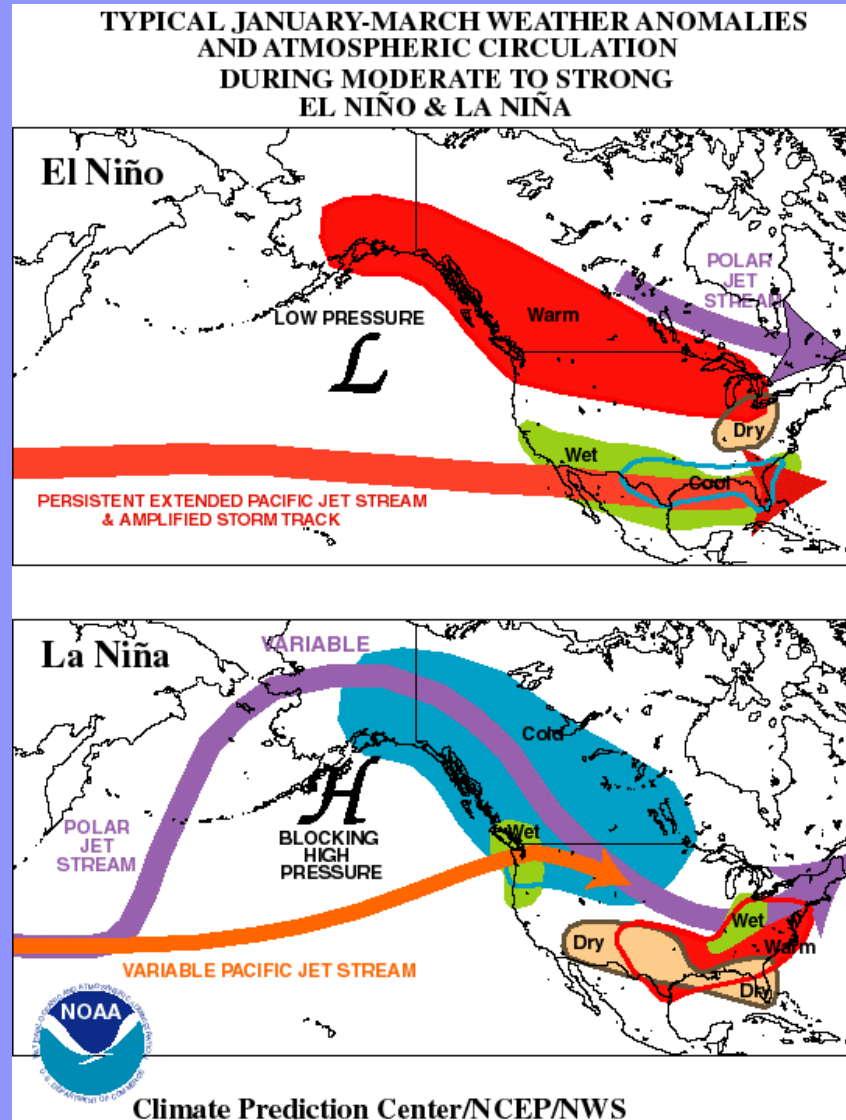
## La Niña arriving

- Tropical ocean temperatures have slid into La Niña territory



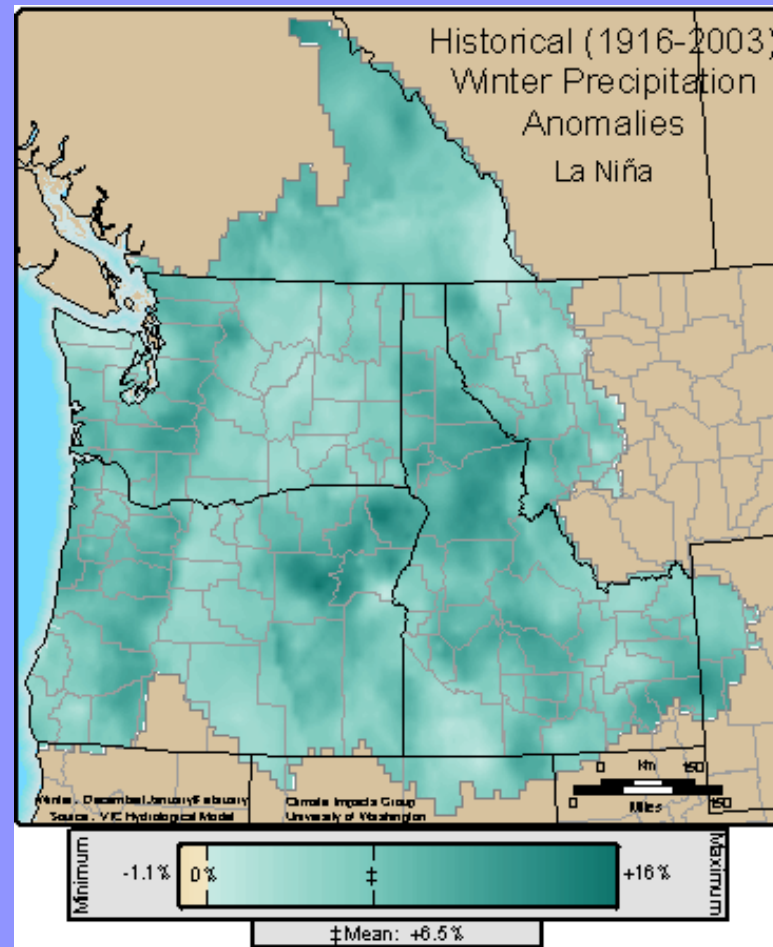
# Forecast for 2008 water year

Typical winter winds and jet stream during El Niño and La Niña winters



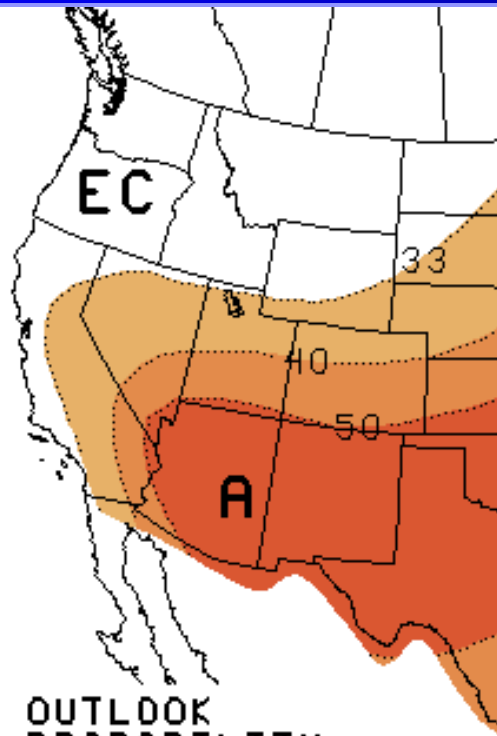
# 2008 water year forecast

Average La Niña winter precip: 1916-2003

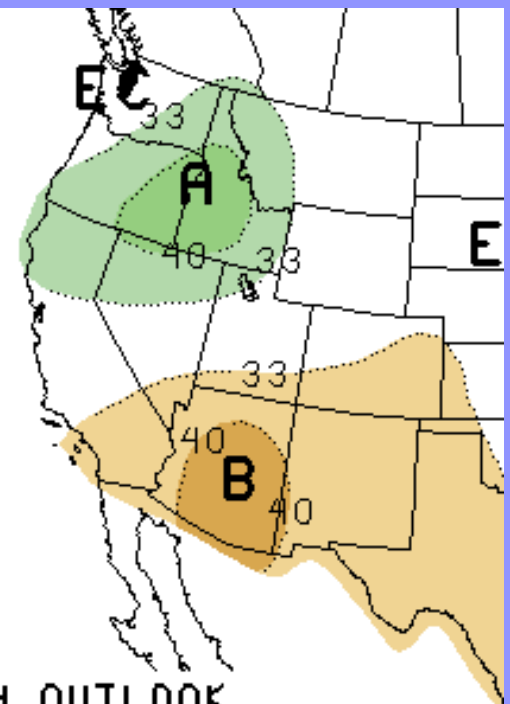


<http://www.cses.washington.edu/cig/maps>

# 2008 water year forecast



THREE-MONTH OUTLOOK  
TEMPERATURE PROBABILITY  
2.5 MONTH LEAD  
VALID DJF 2007  
MADE 20 SEP 2007



THREE-MONTH OUTLOOK  
PRECIPITATION PROBABILITY  
2.5 MONTH LEAD  
VALID DJF 2007  
MADE 20 SEP 2007



# 2008 water year forecast

Bottom line: La Nina tilts the odds towards cool and wet, and a better than average snowpack.

Questions?