

# Conservation Reserve Enhancement Program

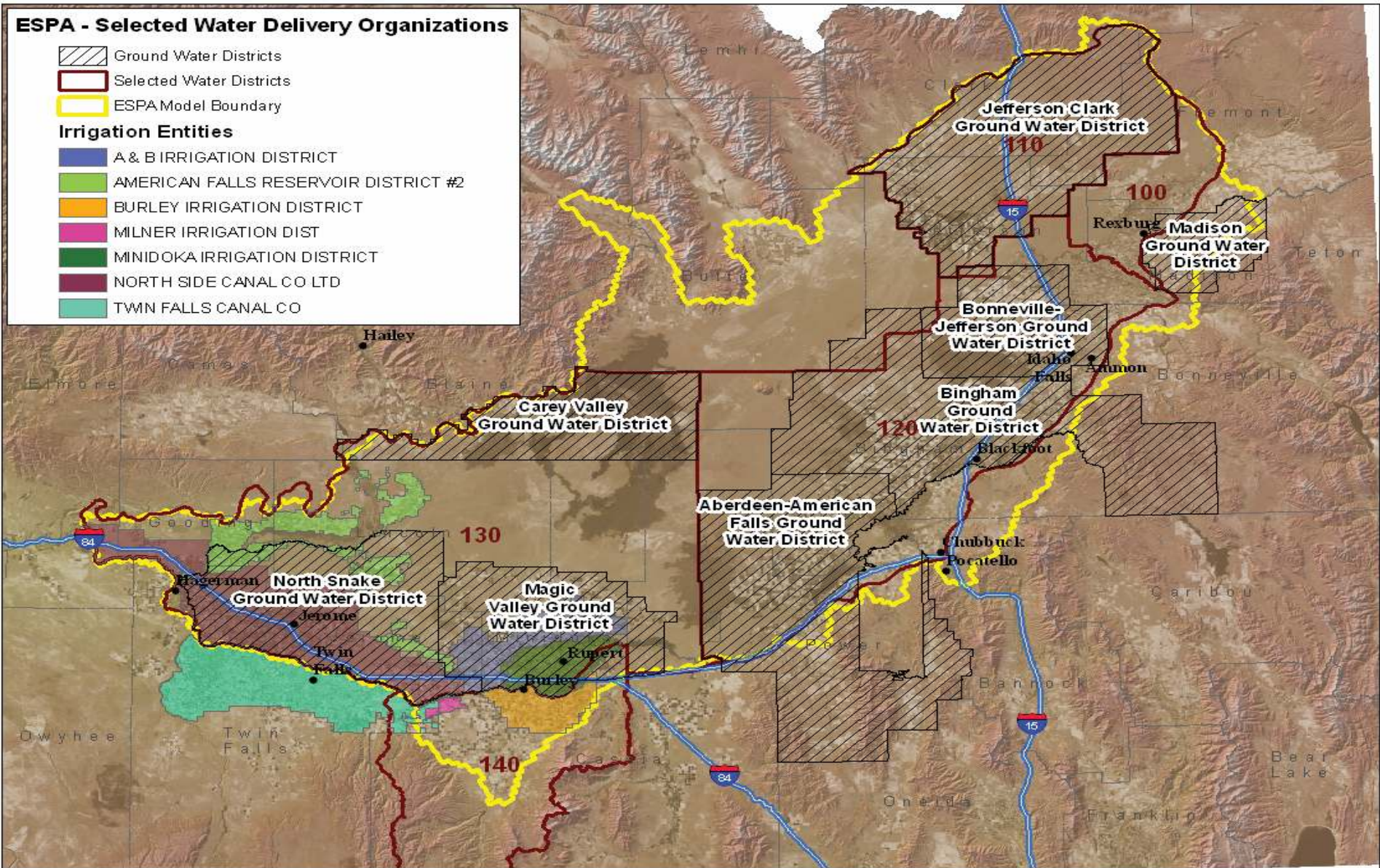
## CAMP Presentation August 23

8/28/2007

Idaho Ground Water  
Appropriators

1

# Selected ESPA Water Entities

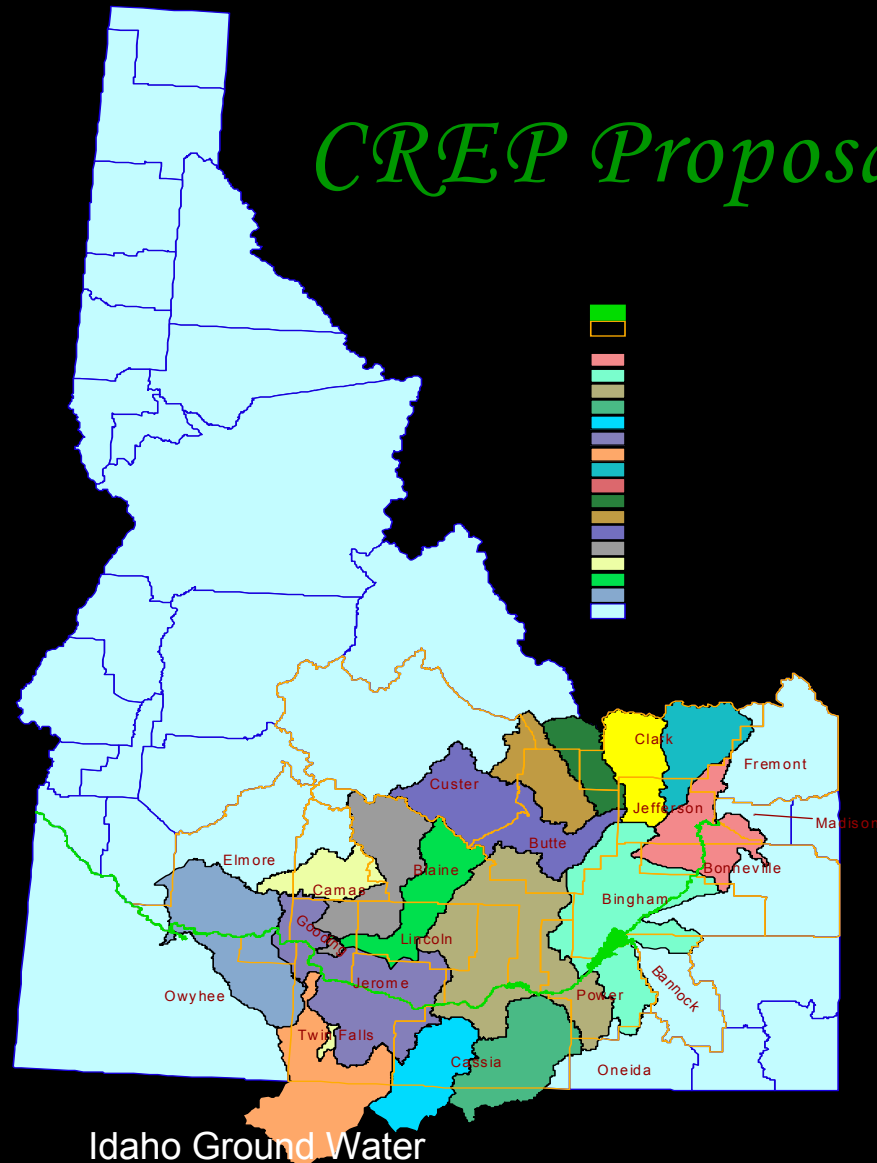


# Conservation Reserve Enhancement Program (CREP)

- CREP is a subset of the 39 Million acre Conservation Reserve Program (Farm Bill)
- CREP was part of the 1996 Farm Bill but was amended in 2002 Farm Bill
- CREP is a State and Federal Joint partnership
- Funding through Commodity Credit Corporation (CCC) not through Congress
- 26 States have CREPs', three states have more than one CREP
- Idaho is one of three states with an irrigated CRP

# CREP Proposal

*CREP Proposal*



8/28/2007

Idaho Ground Water  
Appropriators

# CREP Proposal

- 100,000 acres on the ESPA
- Funding is 80% federal and 20% state funding
- State funding can include in-kind services
- For planning purposes the average price per acre for this proposal will be \$160/yr. at 15 years
- FSA payment of \$124-134/yr plus state funding for other 20%
- Main purpose of the CREP is water conservation and habitat improvement

# CREP Criteria

- Water must be measured, monitored and reported
- Habitat consideration
  - ◆ CP 4 (native grass and legumes)
  - ◆ CP 12 (native shrubs and grasses)
  - ◆ Must meet objectives of water or habitat conservation purposes
  - ◆ Ground water irrigation only because surface water supplies could not protect conserved water
  - ◆ Must meet CRP guidelines and rules

# Challenges of CREP

- IGWA had to propose a one-time \$30/acre special incentive payment (SIP) before National Farm Service Agency would accept Idaho's CREP, State of Idaho has provided a loan for the \$3 M
- August 2006, over 200,000 acres signed up for CREP
- CRP rules and regulations have limited full participation
- Only 1/3 of Idaho's crop land can be a Conservation Priority Area for CRP unless designed by Sec. of Ag or Congress

# Challenges (continued)

- Three counties not able to participate: Power, Bannock, and Bonneville are over the 25% acreage limit for CRP
- Payments are limited to \$50,000/yr per entity.
- Land not in Conservation Priority Areas has to be highly erodible to qualify for CRP
- Hay or pasture land is excluded from CRP unless it was planted during 1996-2001
- CREP eligible ground must have been irrigated in last 24 months



| Counties        | Acres Offered   | Approved        | Returned       | Ineligible   |
|-----------------|-----------------|-----------------|----------------|--------------|
| Bingham         | 14,097.0        | 12,043.2        | 468.0          | 902.8        |
| Blaine          | 202.8           | 102.7           | 0.0            | 0.0          |
| Bonneville      | 274.9           | 153.9           | 65.9           | 0.0          |
| Cassia          | 3,616.5         | 2,821.8         | 338.0          | 150.8        |
| Elmore          | 213.1           | 213.1           | 0.0            | 0.0          |
| Gooding         | 156.1           | 141.3           | 0.0            | 14.8         |
| Jefferson/Clark | 5,256.8         | 2,652.8         | 2,054.0        | 502.1        |
| Jerome          | 3,690.8         | 2,677.1         | 305.9          | 208.7        |
| Lincoln         | 2,616.7         | 1,396.0         | 837.1          | 61.8         |
| Minidoka        | 11,246.7        | 7,052.6         | 3,086.9        | 56.6         |
| Twin Falls      | 3,721.5         | 96.7            | 2,561.2        | 733.4        |
| <b>Total</b>    | <b>45,092.2</b> | <b>29,351.2</b> | <b>9,716.1</b> | <b>2,631</b> |

# Potential Solutions

- Exempt CREP acres from CRP limitation acres
- Exempt highly erodible from CREP
- Raise the yearly payment from \$50,000 to a higher amount
- Allow hay and pasture land into CREP
- Allow irrigated ground that has been irrigated within the last five years
- Have an inflation escalator for the yearly payment

# Potential Solutions

- Working with Senator Crapo to make changes in new farm bill
- Get an exemption from Secretary of Agriculture or Congress on Conservation Priority Areas
- Get State Legislature to fund additional payments for lands not qualifying for CREP
- Explore other Federal Programs such as Nature Resource Conservation Service/EQIP program
- Look at private funding for addition CREP acres or alternatives

# End of Presentation

Questions

Lynn Tominaga

Idaho Ground Water Appropriators

1109 W. Main, Suite 300

Boise, Idaho

Phone: 208-381-0294

Fax: 208-381-5272

Cell: 208-890-4014