



# Amended AGENDA

## IDAHO WATER RESOURCE BOARD

---

### Upper Snake River Advisory Committee Meeting No. 4-25

Thursday, April 10, 2025

10:00 a.m. (MDT)

**Brad Little**  
Governor

**Jeff Raybould**  
Chairman  
St. Anthony  
At Large

**Jo Ann Cole-Hansen**  
Vice Chair  
Lewiston  
At Large

**Dean Stevenson**  
Secretary  
Paul  
District 3

**Dale Van Stone**  
Hope  
District 1

**Albert Barker**  
Boise  
District 2

**Brian Olmstead**  
Twin Falls  
At Large

**Marcus Gibbs**  
Grace  
District 4

**Patrick McMahon**  
Sun Valley  
At Large

#### Meeting Location(s):

BOISE  
Water Center  
Conf. Room 549 F  
322 E. Front St.

IDAHO FALLS  
Eastern Regional Office  
Main Conference Room  
900 N. Skyline Dr.

or

VIDEO conference via Zoom is available upon registration, contact  
[cooper.fritz@idwr.idaho.gov](mailto:cooper.fritz@idwr.idaho.gov) for registration information

Livestream available at <https://www.youtube.com/@iwrp>

---

1. Introductions and Attendance
2. Weather Forecast (NOAA)
3. Snow Pack / Streamflow Forecasts (NRCS)
4. Water Supply / Operations Update (USBR)
5. Idaho Power Company / Operations Update
6. Water District 01 Briefing
7. IWRB Managed Recharge Operations
8. New Business
9. Adjourn

Committee Member: Brian Olmstead

#### Americans with Disabilities

The meeting will be held in person and online. If you require special accommodations to attend, participate in, or understand the meeting, please make advance arrangements by contacting Department staff by email [jennifer.strange@idwr.idaho.gov](mailto:jennifer.strange@idwr.idaho.gov) or by phone at (208) 287-4800.

# Snowpack & Water Supply Forecasts

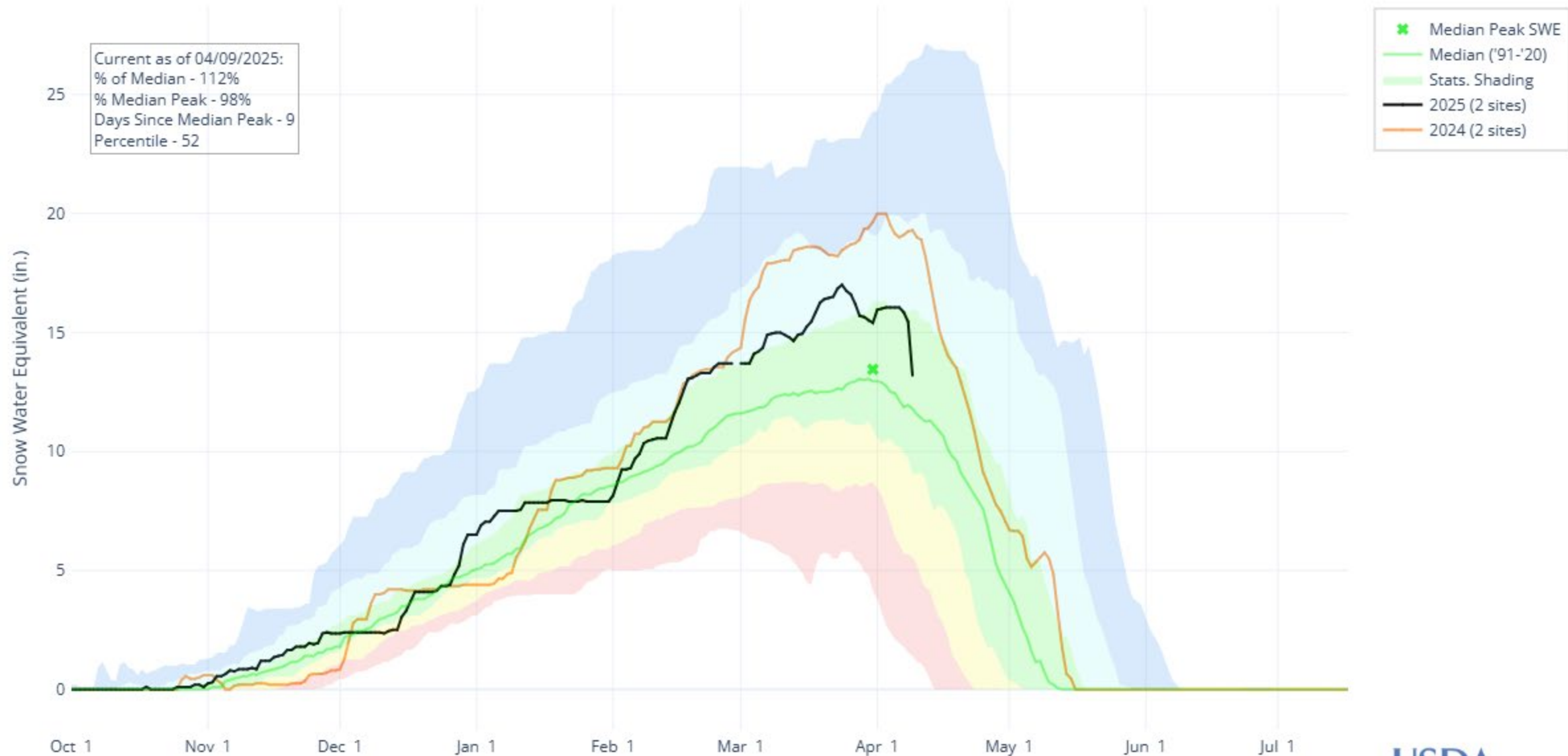
*Upper Snake River Advisory Committee  
April 10, 2025*



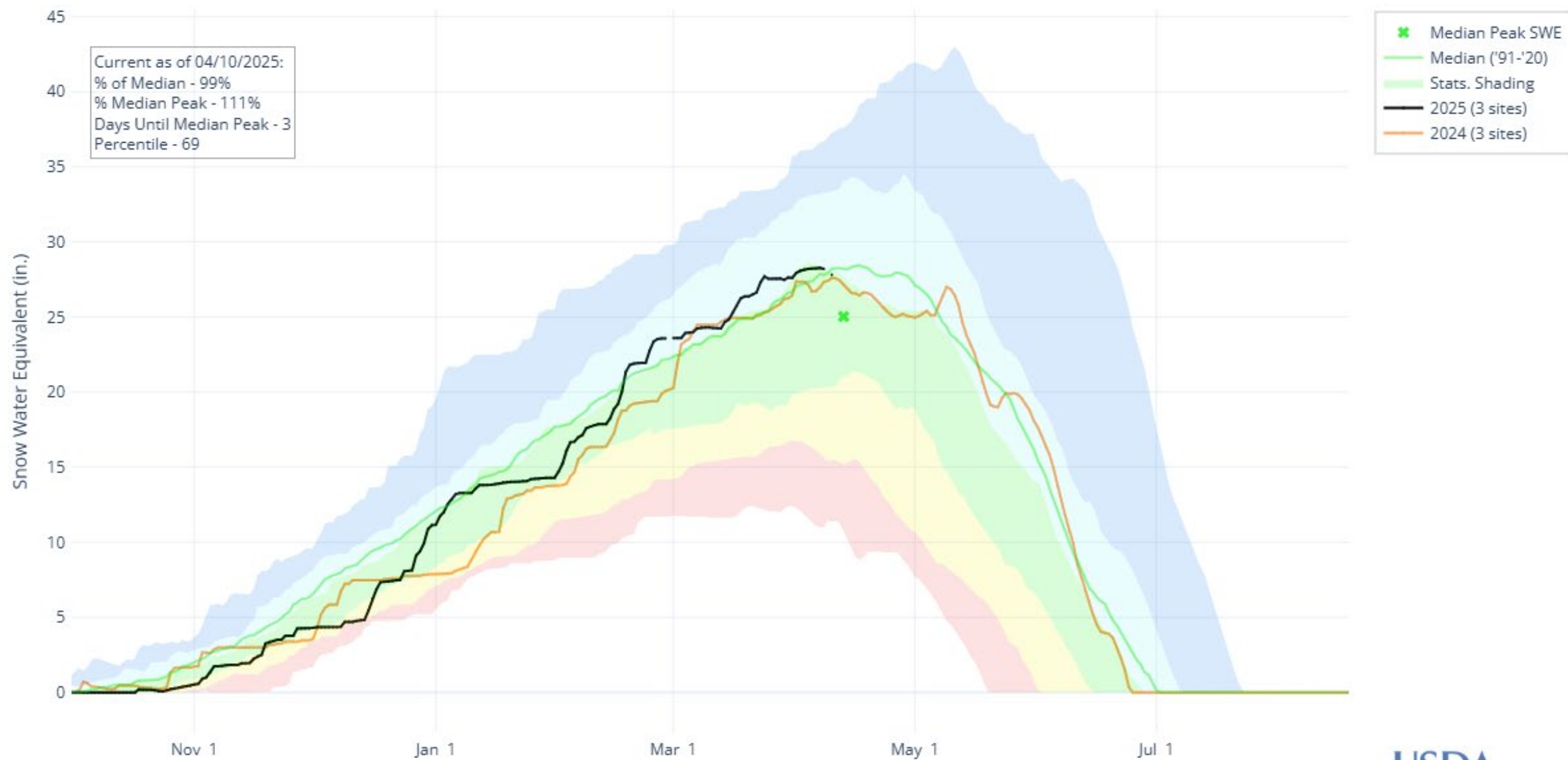
Presented by Erin Whorton

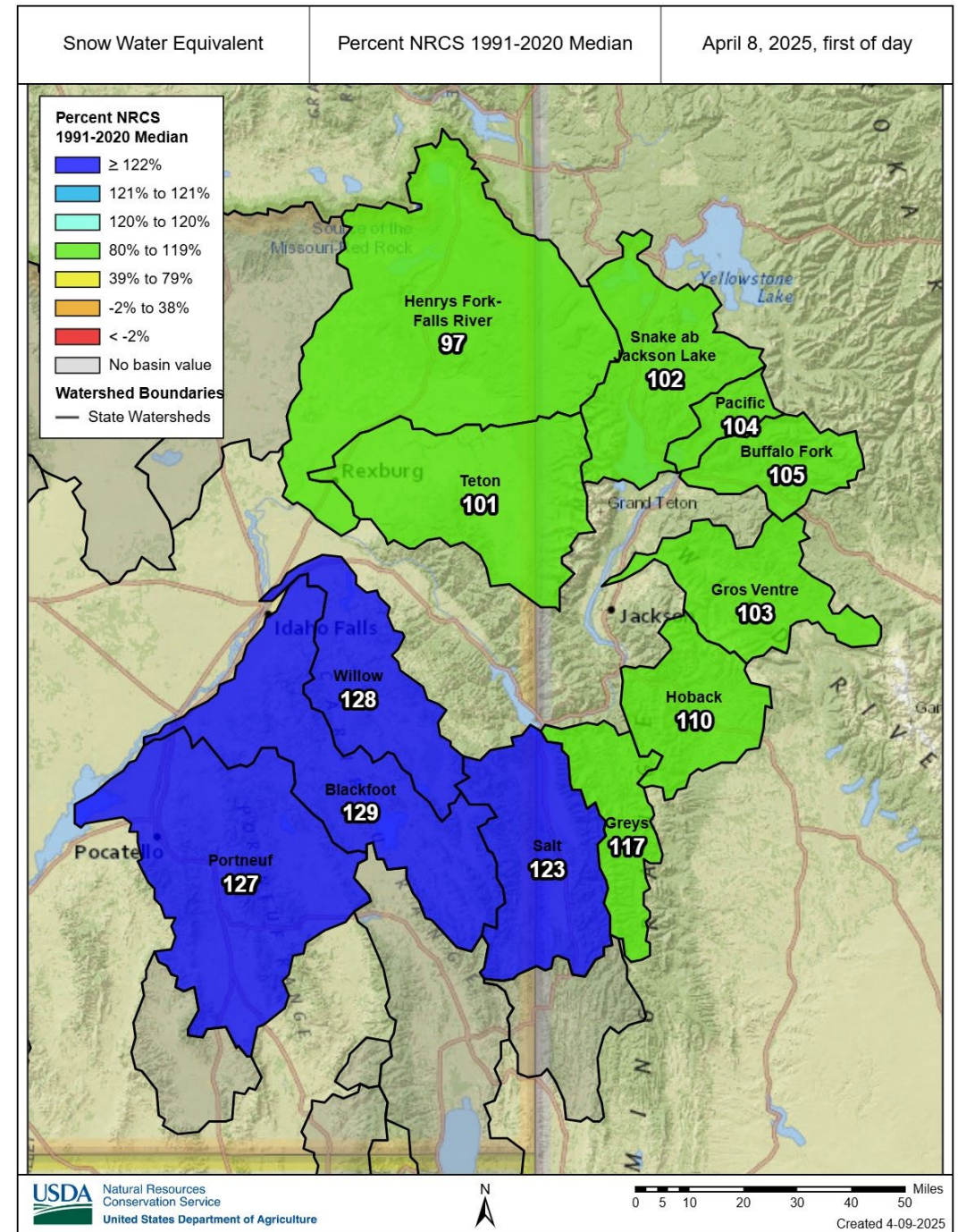
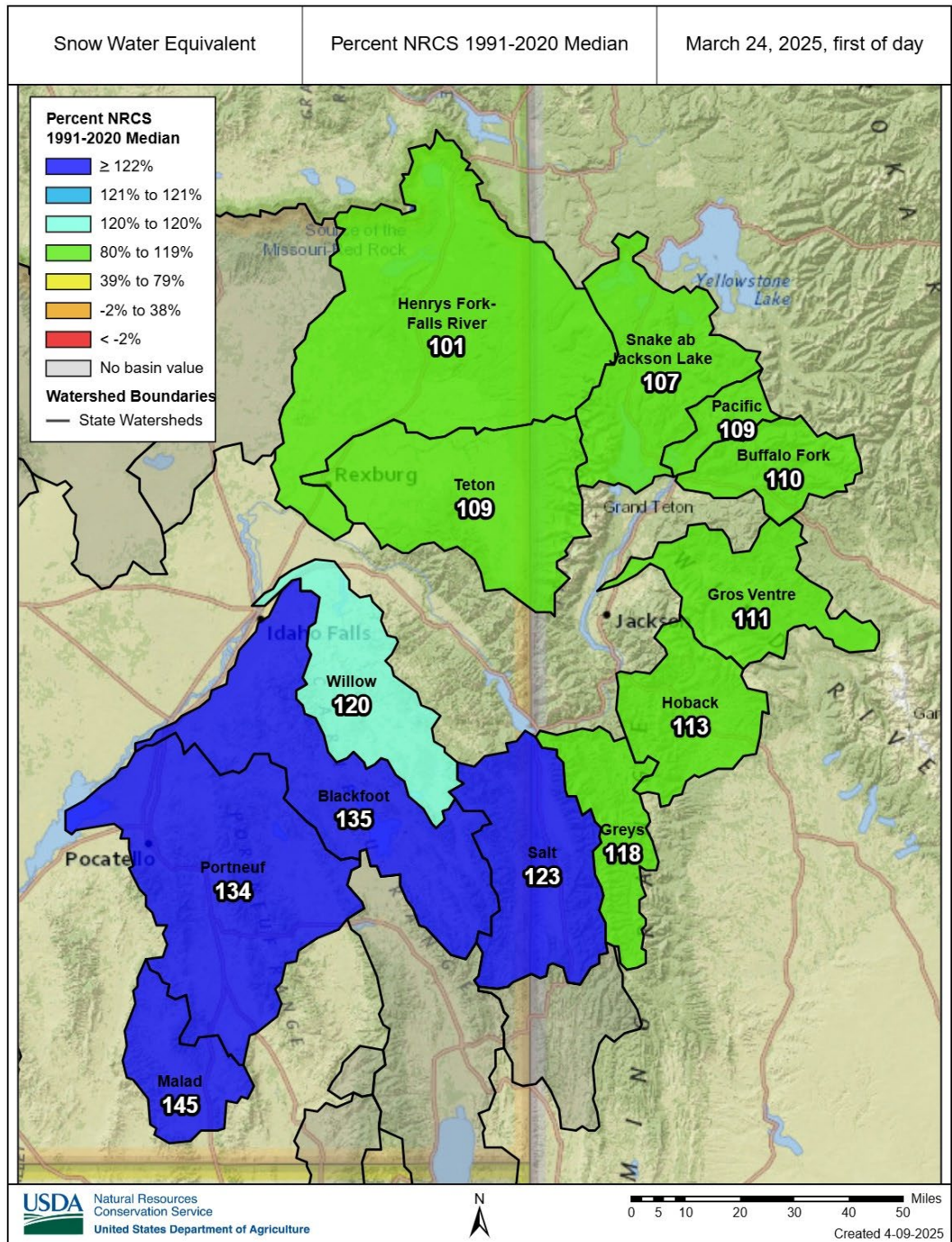


## SNOW WATER EQUIVALENT IN BLACKFOOT



## SNOW WATER EQUIVALENT IN TETON





# SNOW WATER EQUIVALENT IN WILLOW

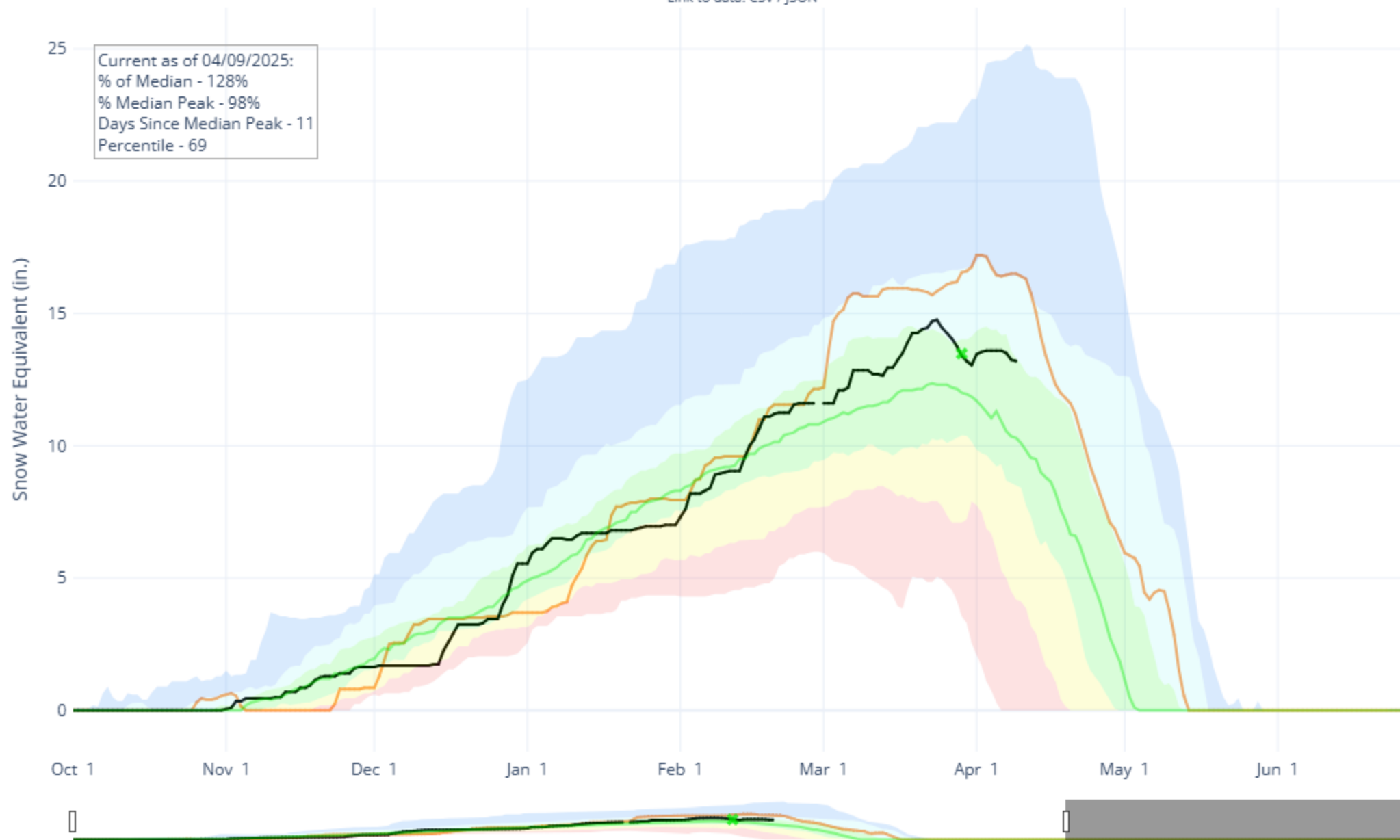
Reset Range

[Link to data: CSV / JSON](#)

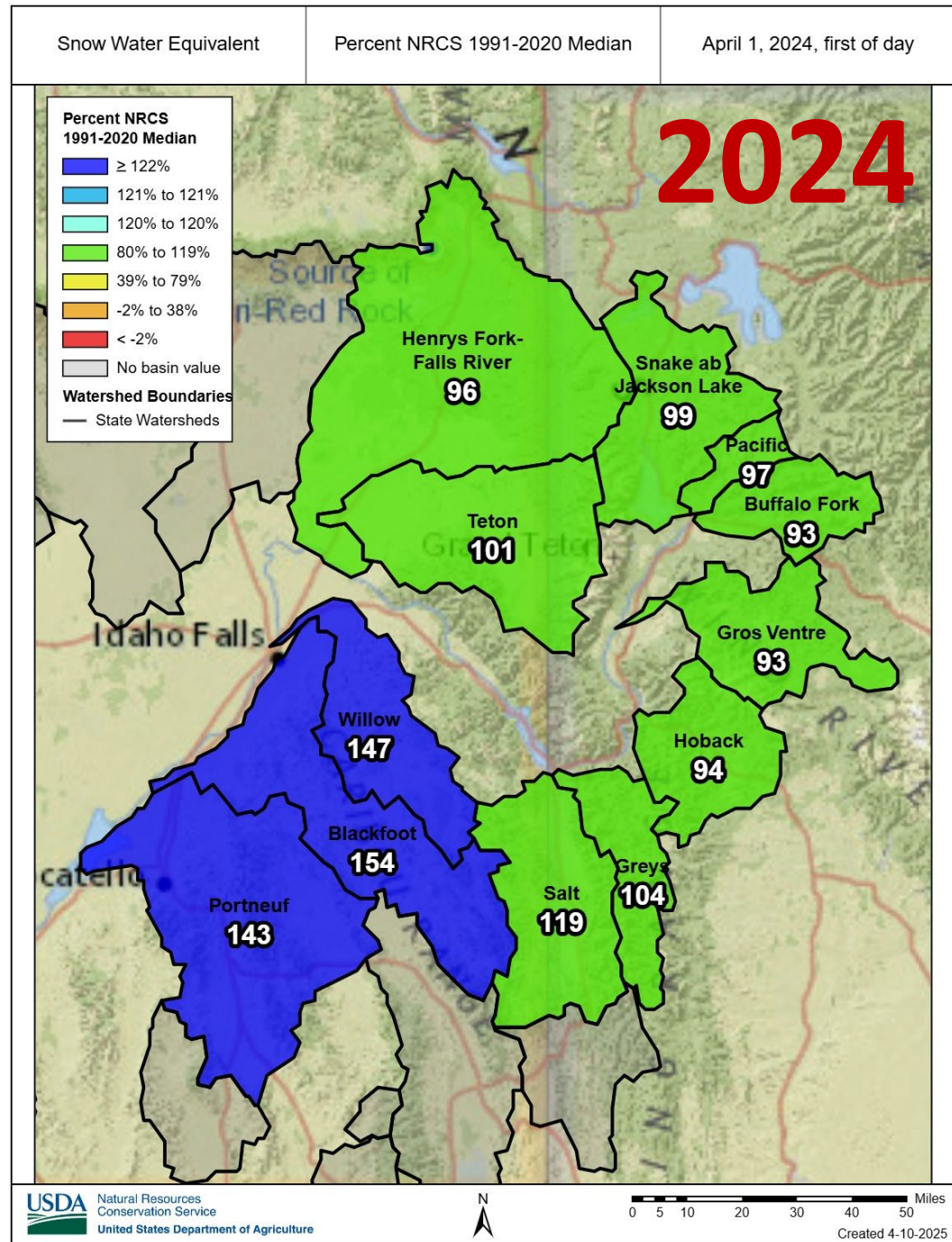
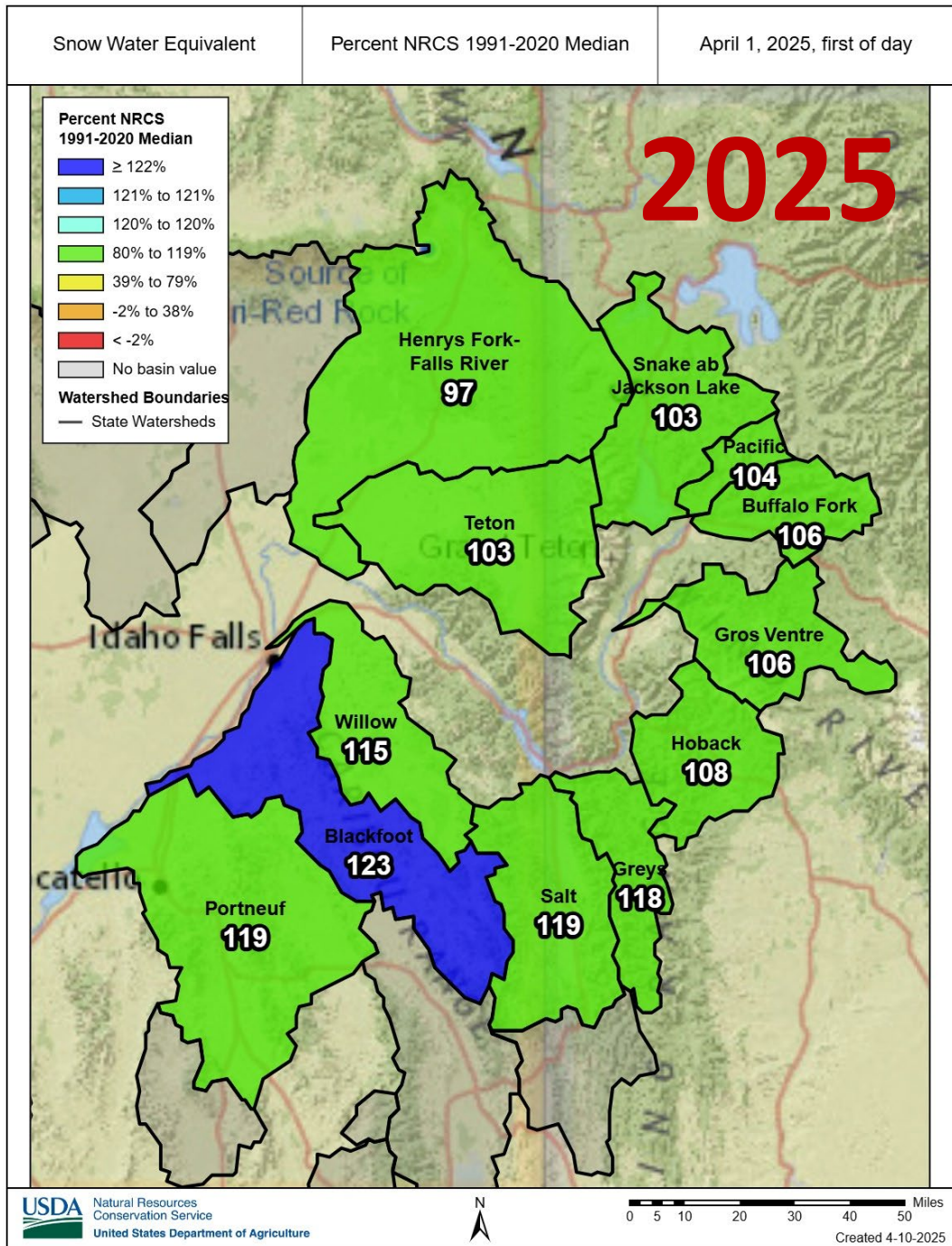
Station List

Current as of 04/09/2025:  
% of Median - 128%  
% Median Peak - 98%  
Days Since Median Peak - 11  
Percentile - 69

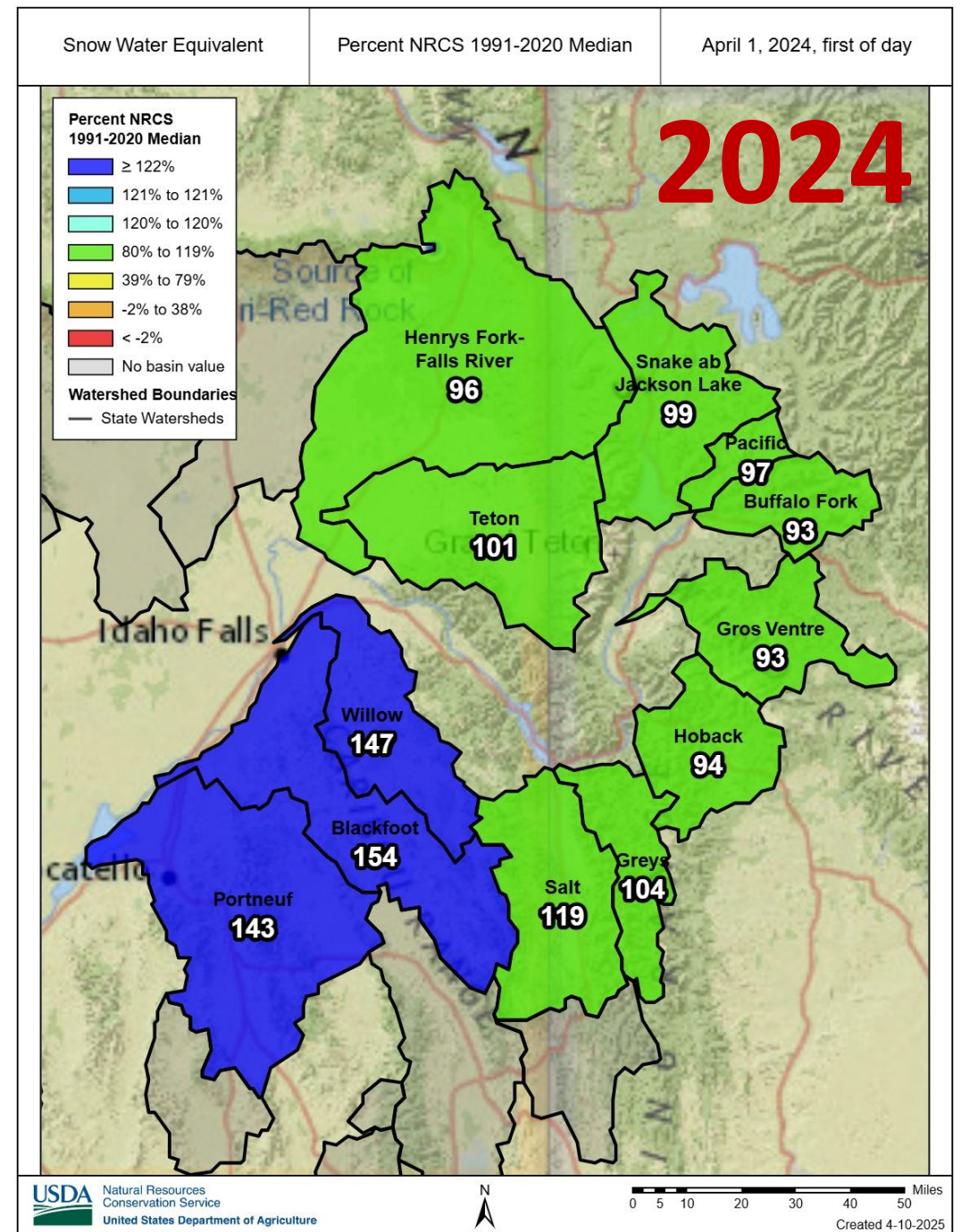
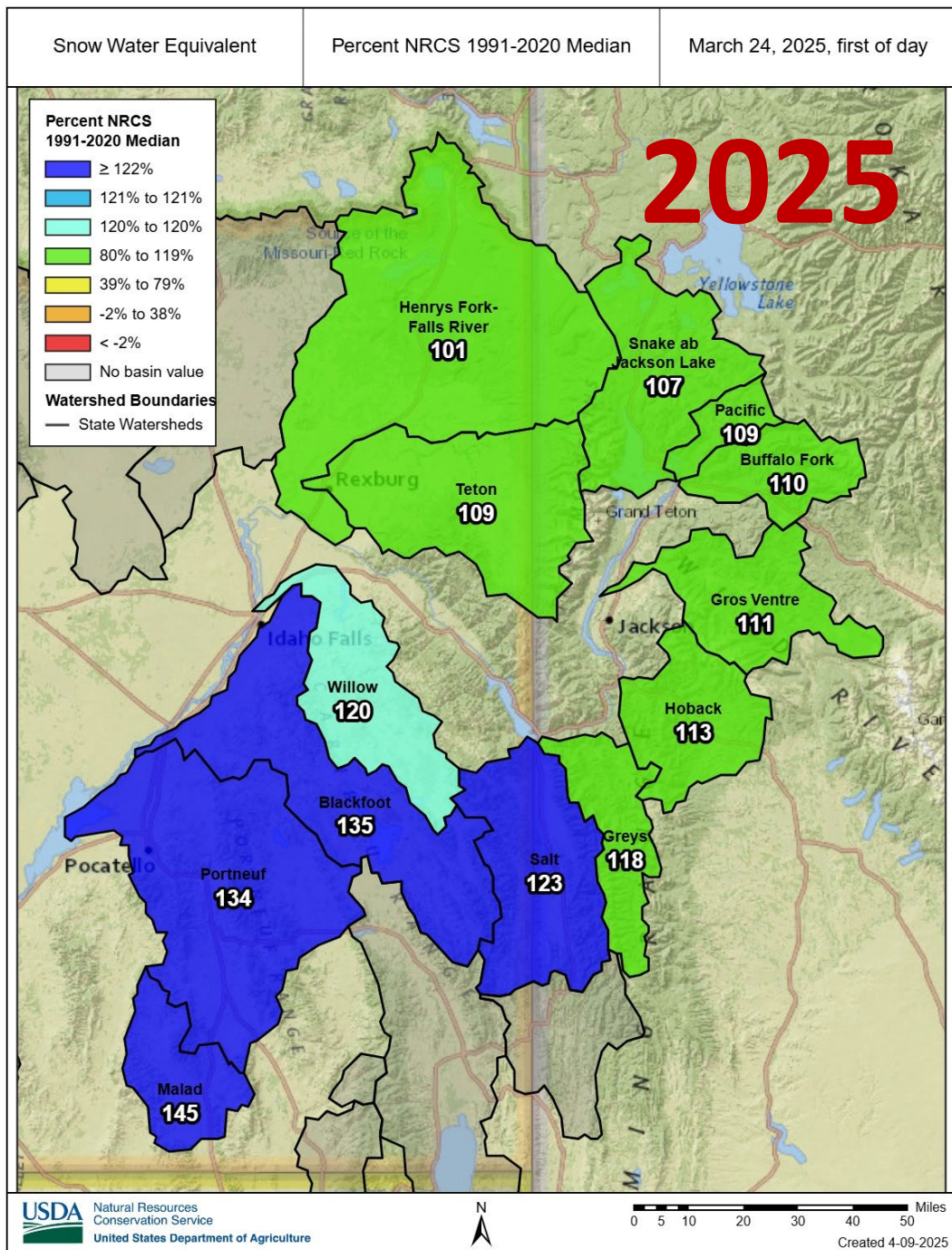
- ✖ Median Peak SWE
- Median ('91-'20)
- Stats. Shading
- 2025 (2 sites)
- 2024 (2 sites)





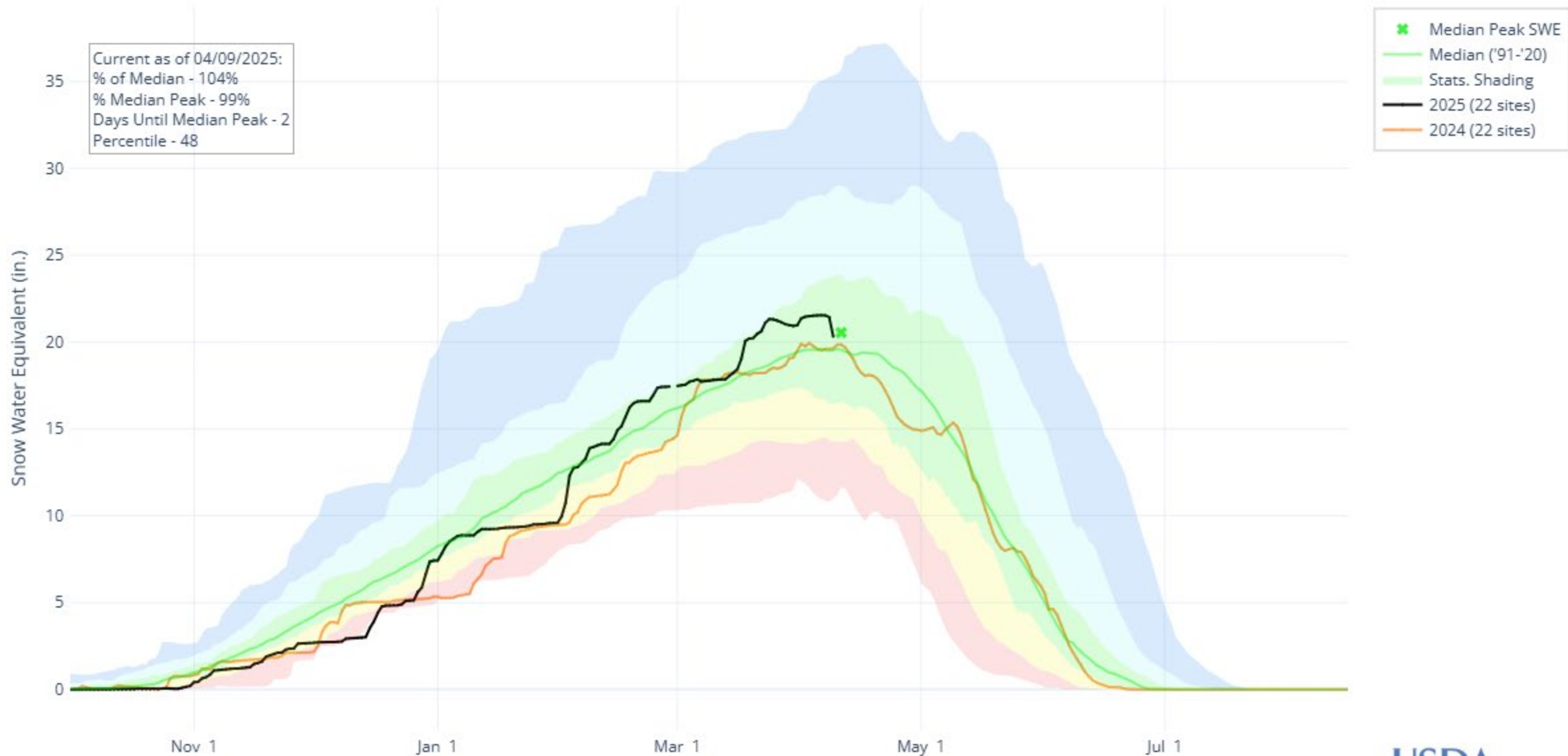






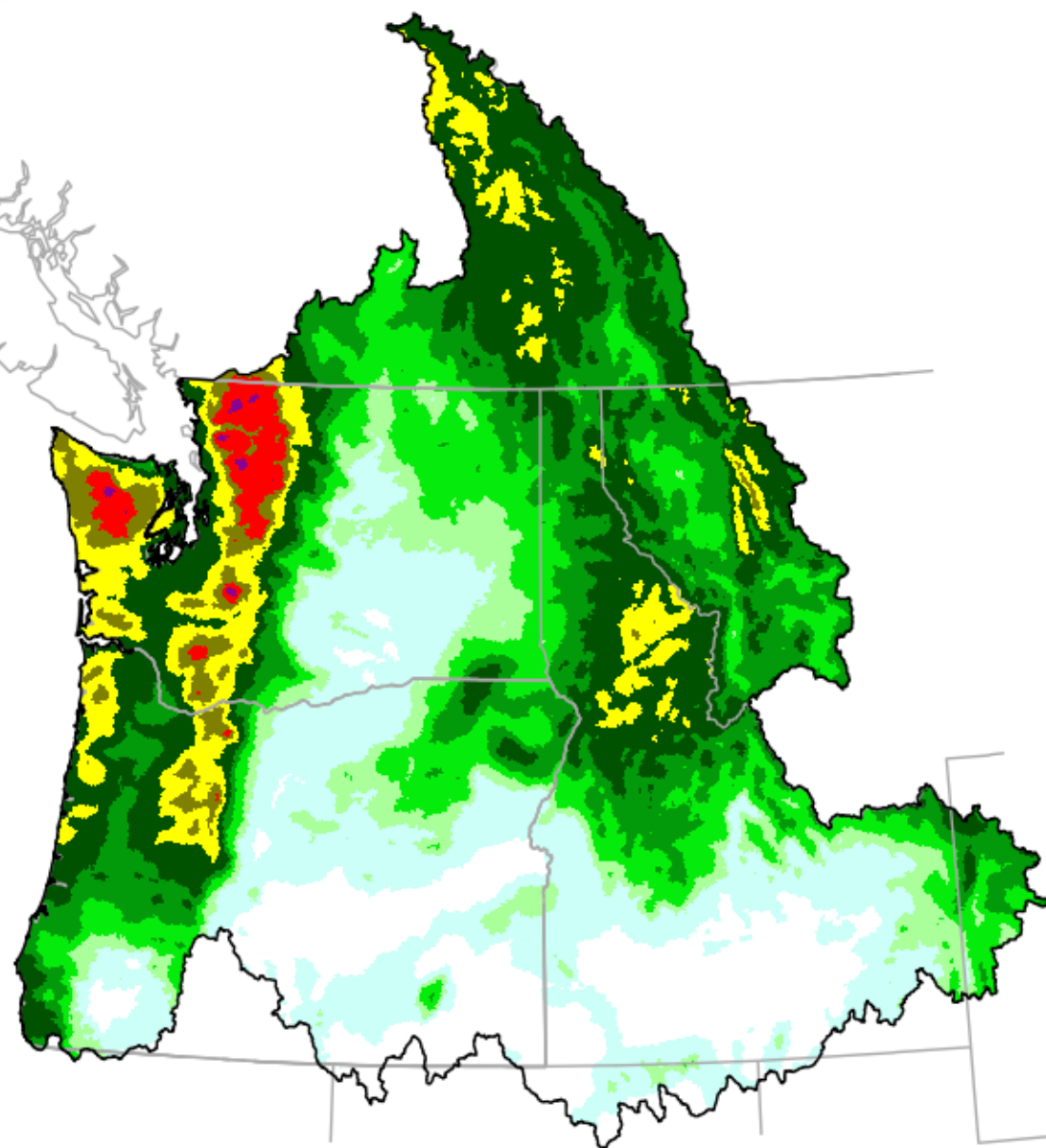


## SNOW WATER EQUIVALENT IN SNAKE RIVER ABOVE HEISE



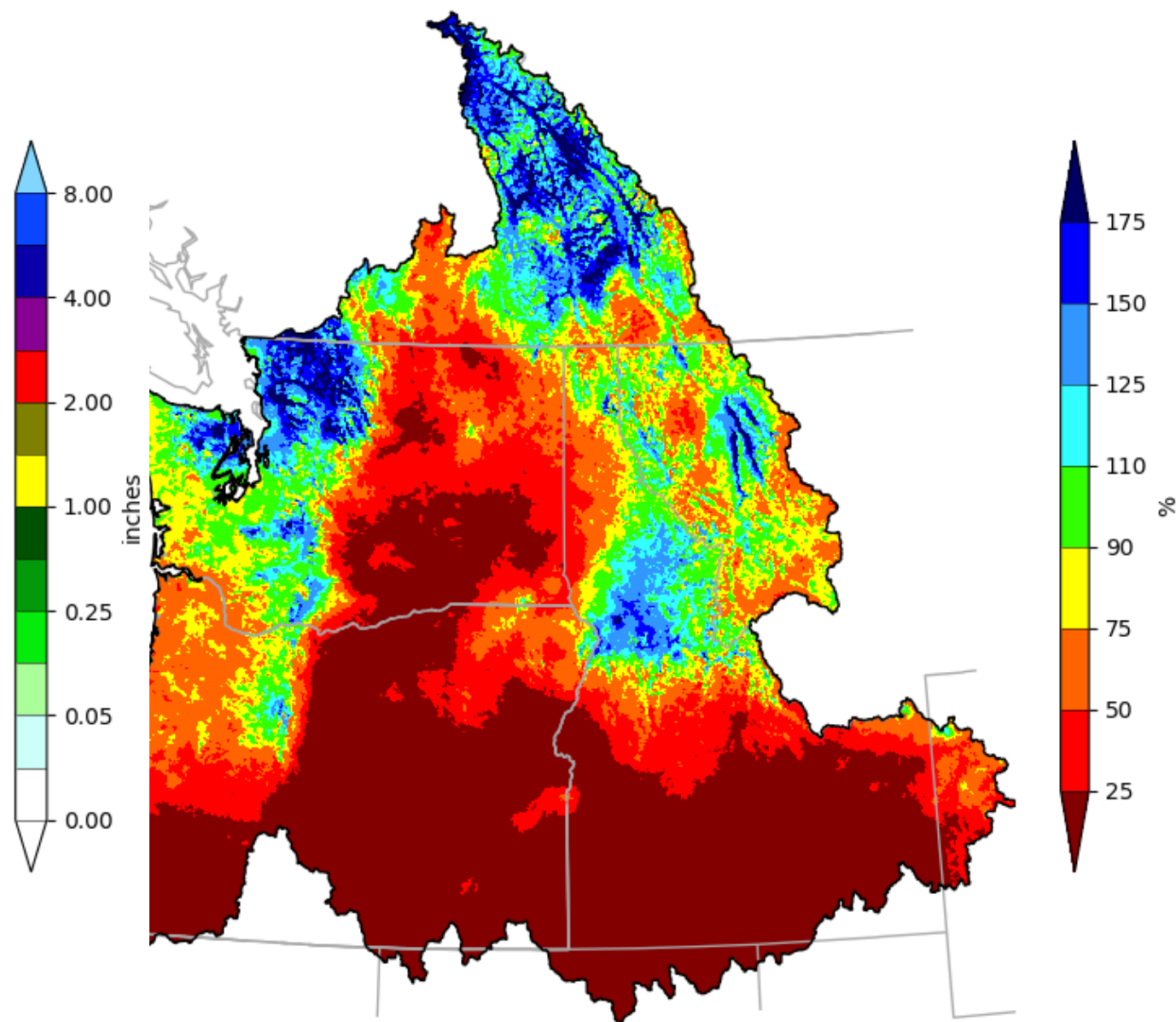


Northwest River Forecast Center  
5 Day QPF, Ending 12Z, 04/13/25



on Time: Tue Apr 8 14:48:08 UTC 2025

Northwest River Forecast Center  
5 Day QPF (Percent of Climatology), Ending 12Z, 04/13/25



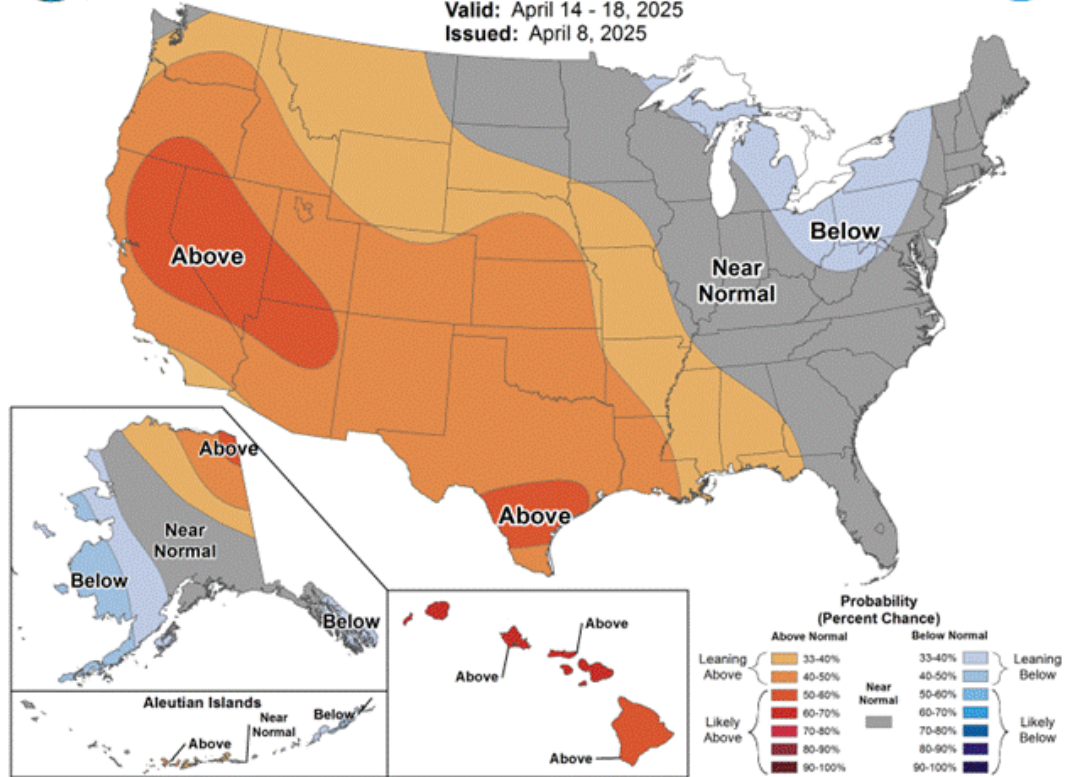
ne: Tue Apr 8 14:48:33 UTC 2025





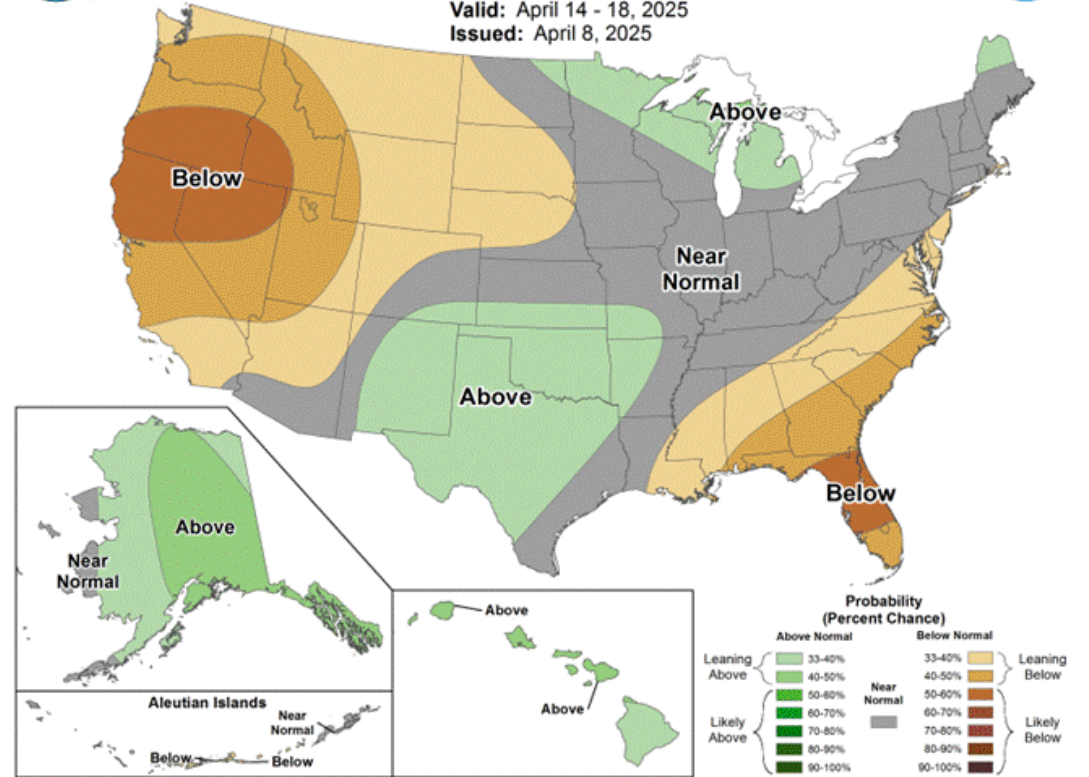
## 6-10 Day Temperature Outlook

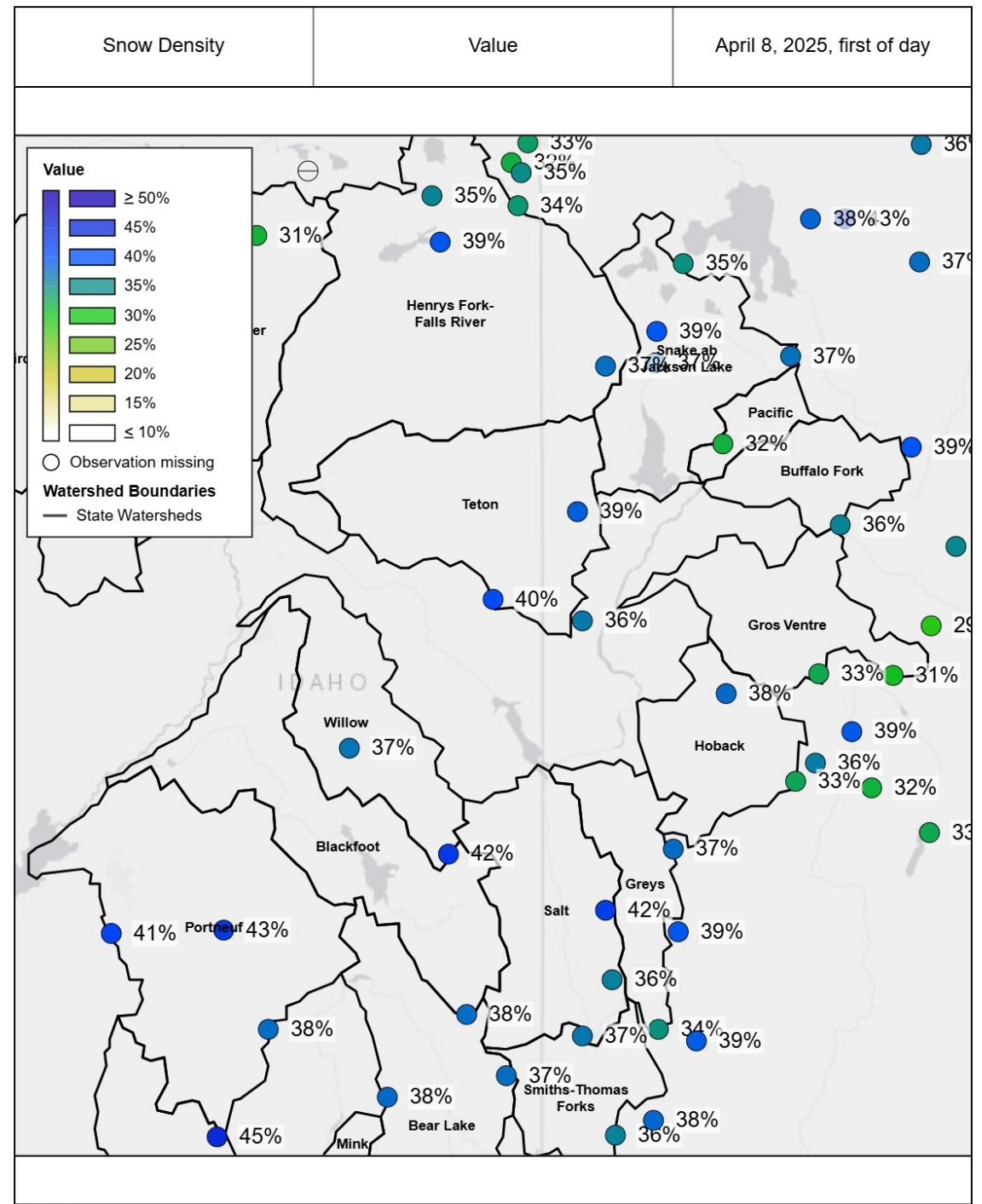
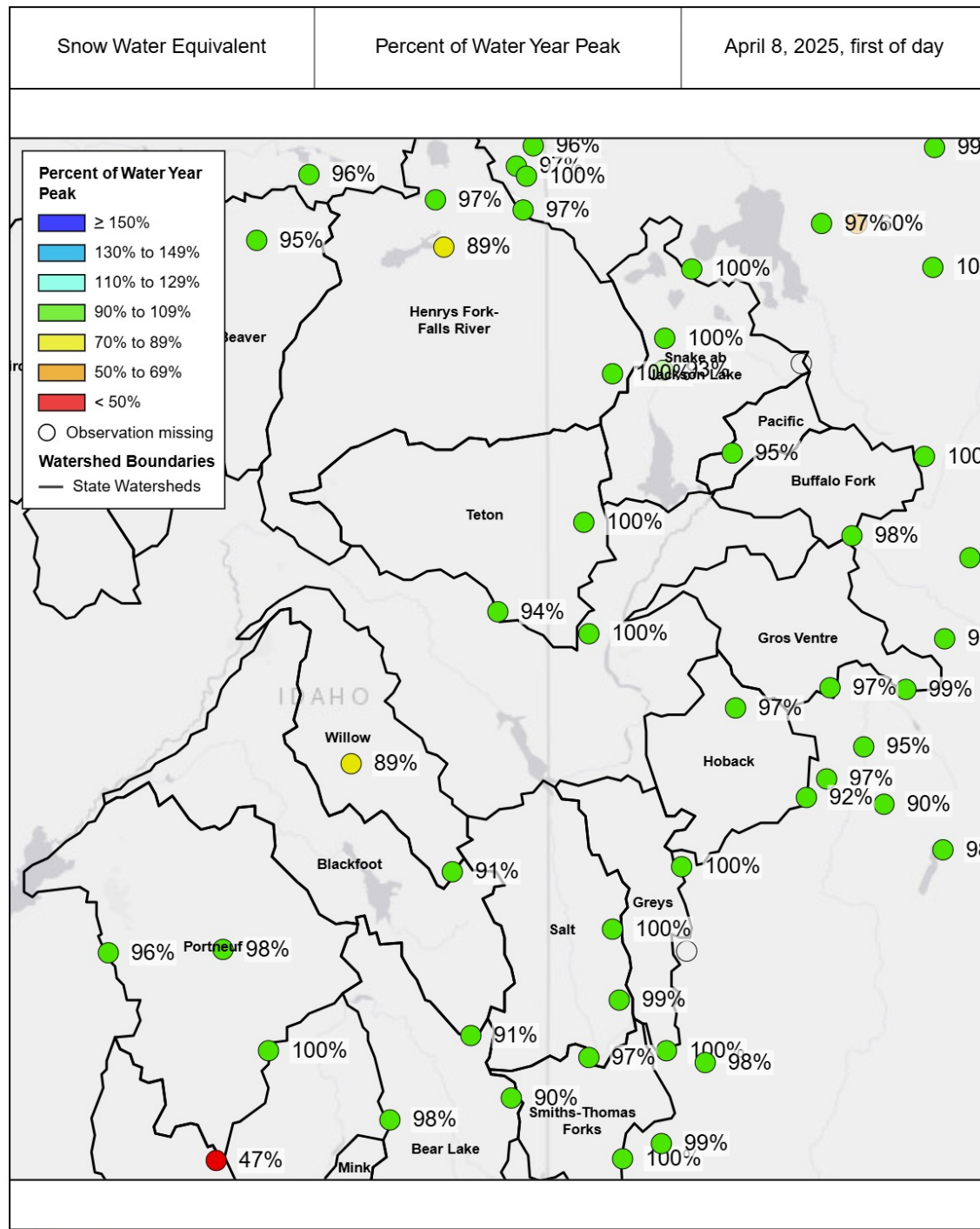
Valid: April 14 - 18, 2025  
Issued: April 8, 2025



## 6-10 Day Precipitation Outlook

Valid: April 14 - 18, 2025  
Issued: April 8, 2025

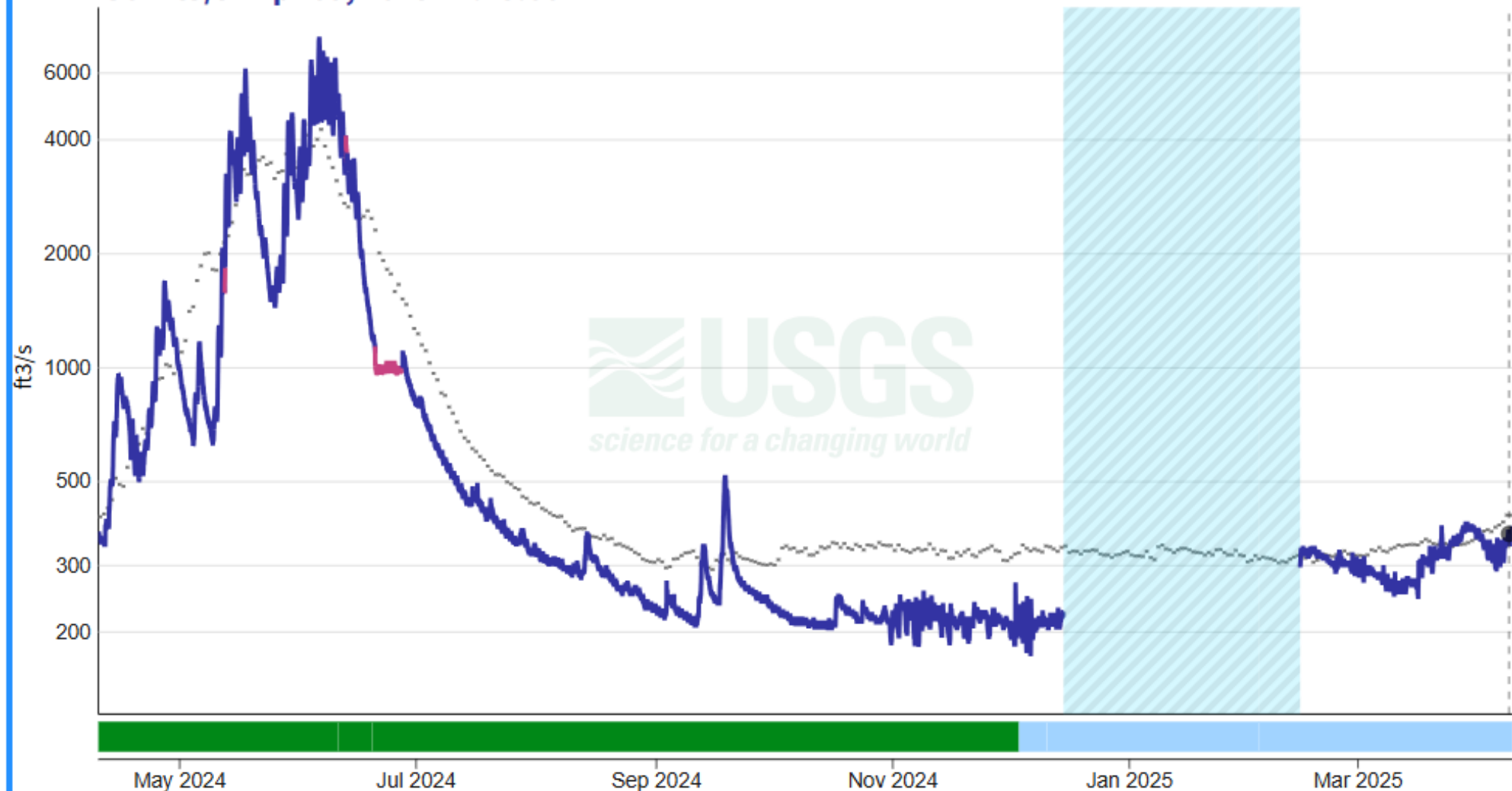






April 10, 2024 - April 10, 2025  
Discharge, cubic feet per second

364 ft<sup>3</sup>/s - Apr 09, 2025 12:15:00 AM MDT



March 11, 2025 - April 10, 2025  
Discharge, cubic feet per second

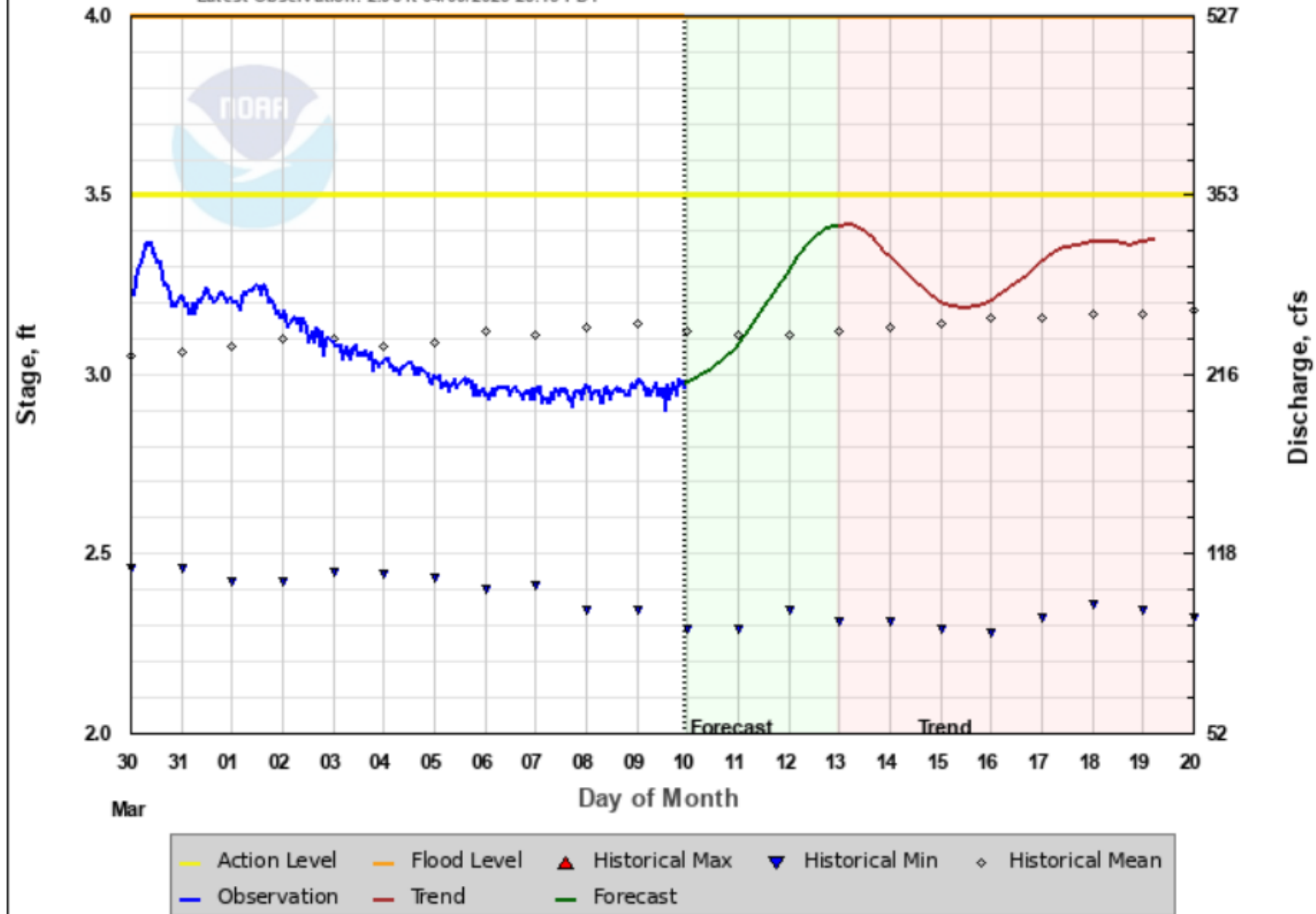
387 ft<sup>3</sup>/s - Mar 29, 2025 02:45:00 AM MDT





# PORTNEUF - AT TOPAZ (TOPI1)

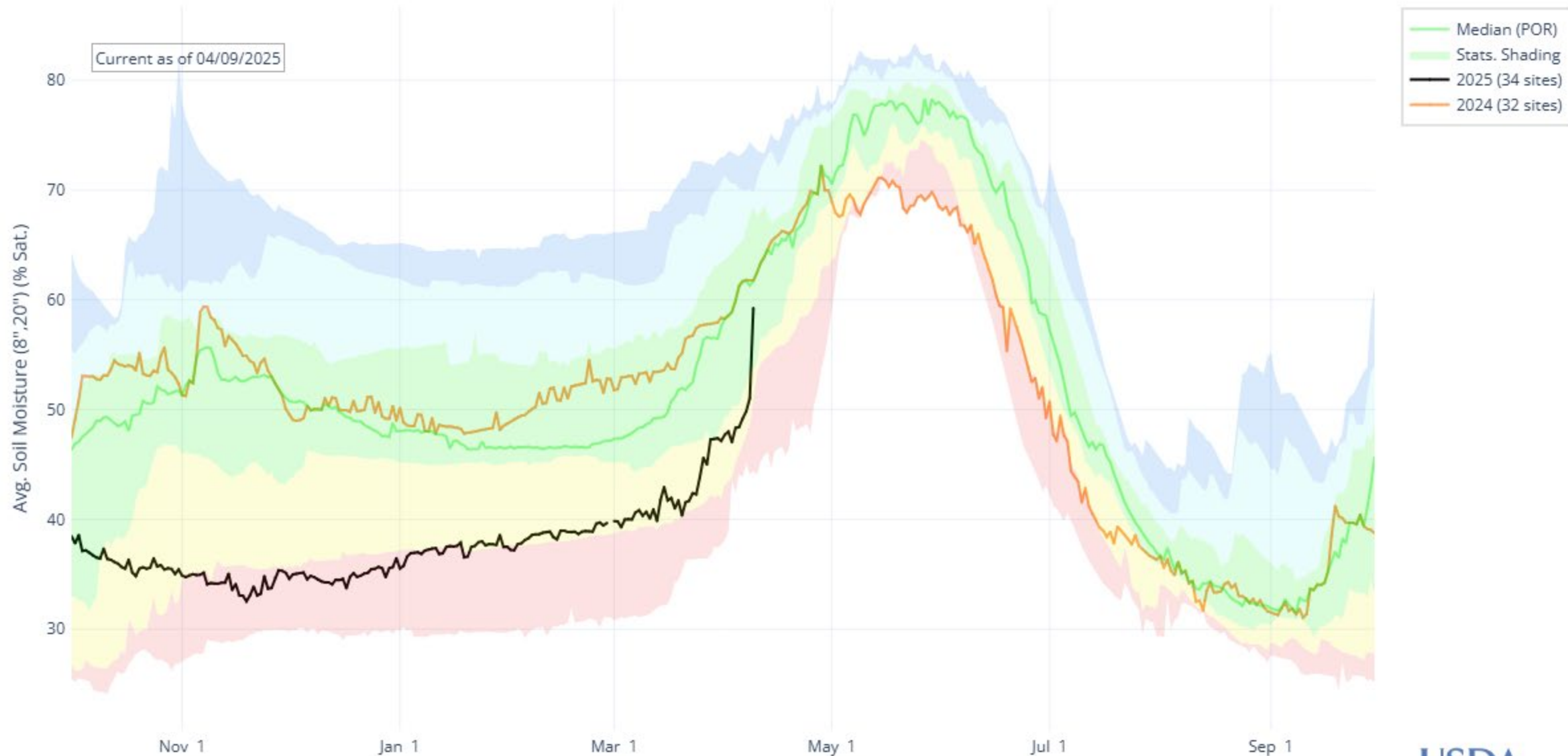
Latest Observation: 2.96 ft 04/09/2025 23:15 PDT



Forecast Created: 04/09/2025 15:50 PDT

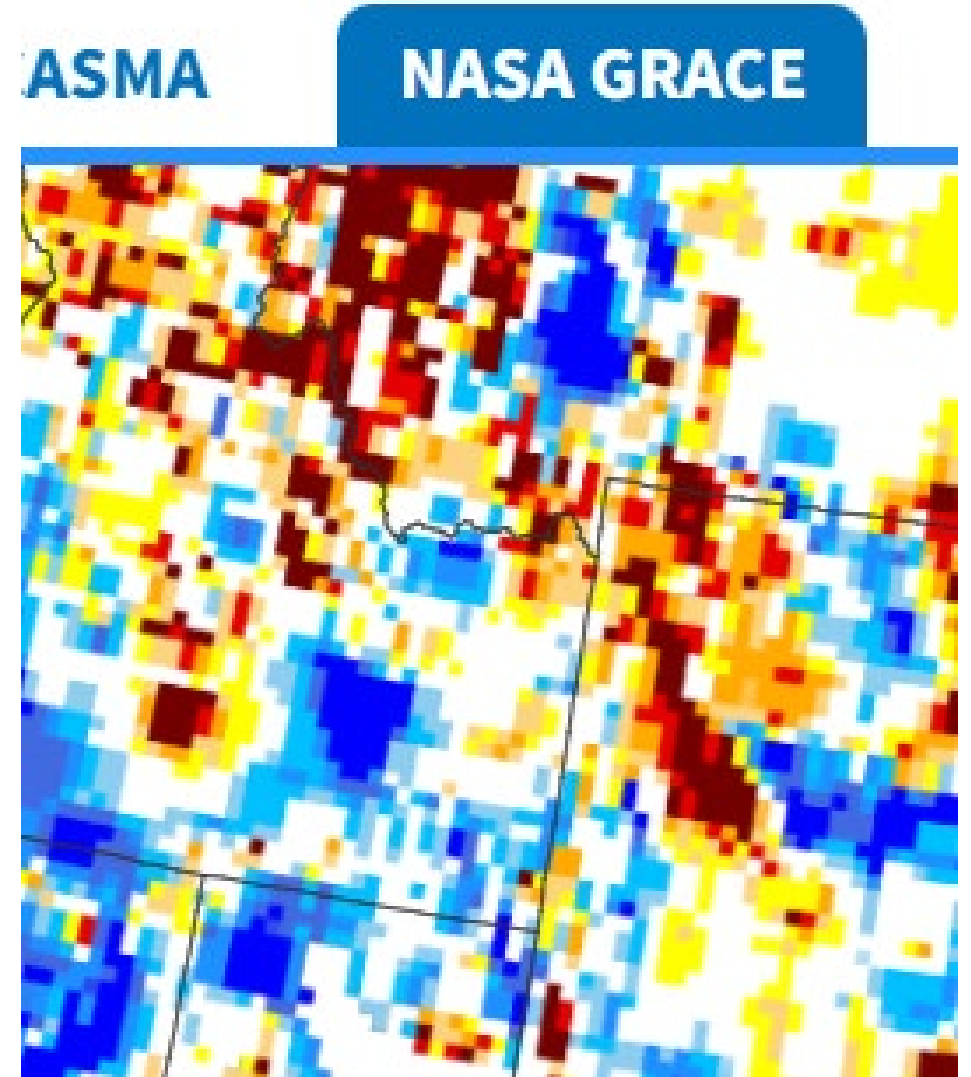
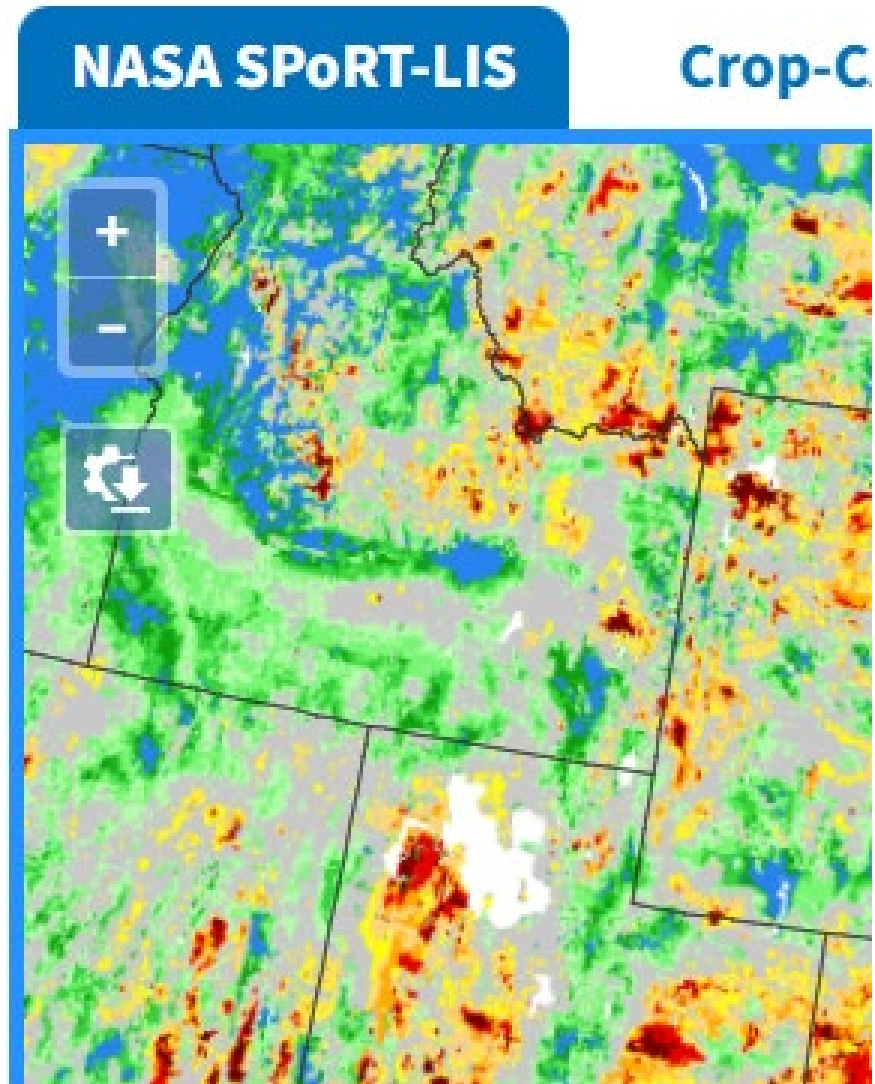
Plot Created: 04/09/2025 23:42 PDT

# AVG. SOIL MOISTURE (8",20") IN UPPER SNAKE





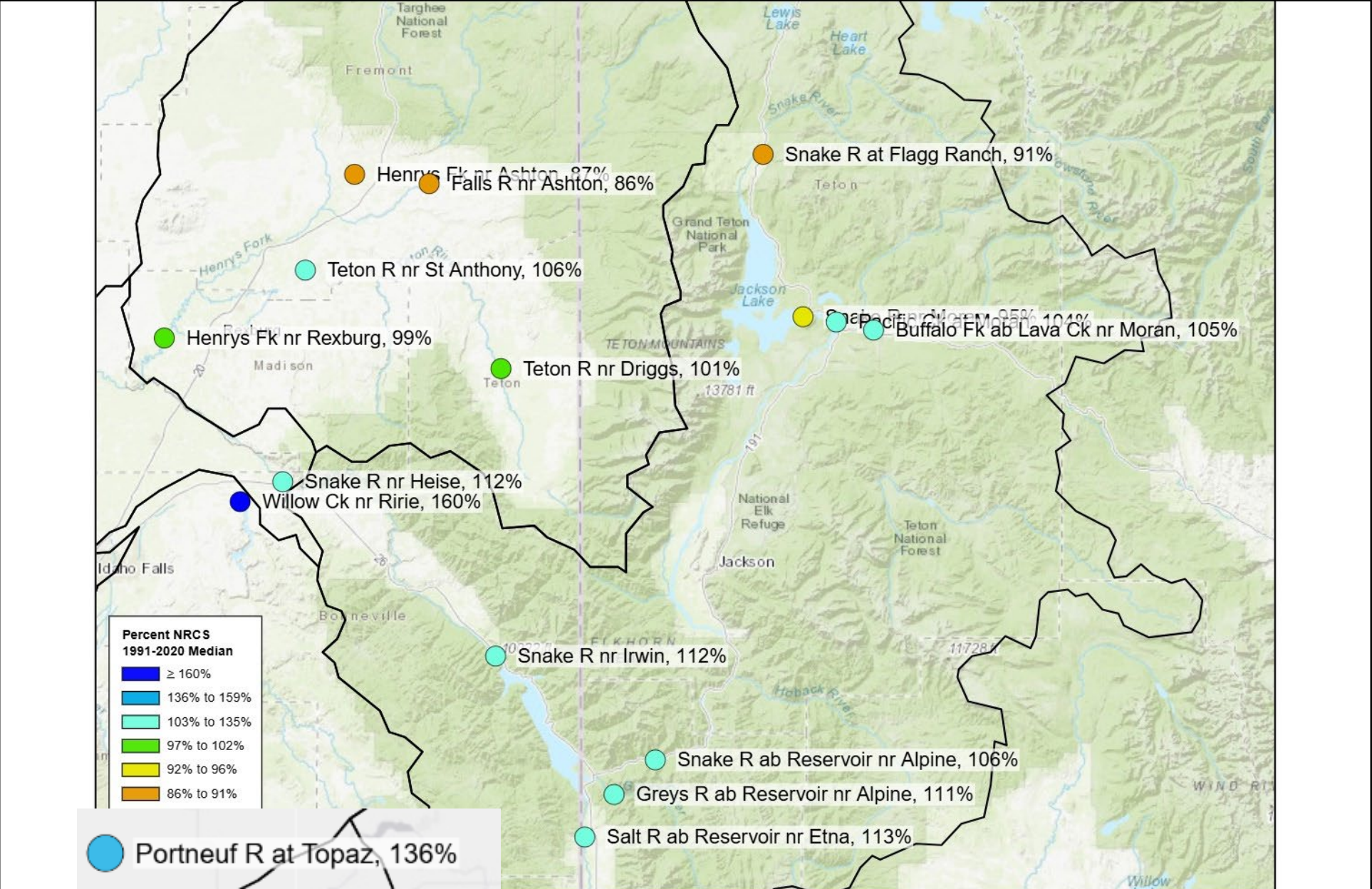
# Dry soils observed in Upper Snake Basin



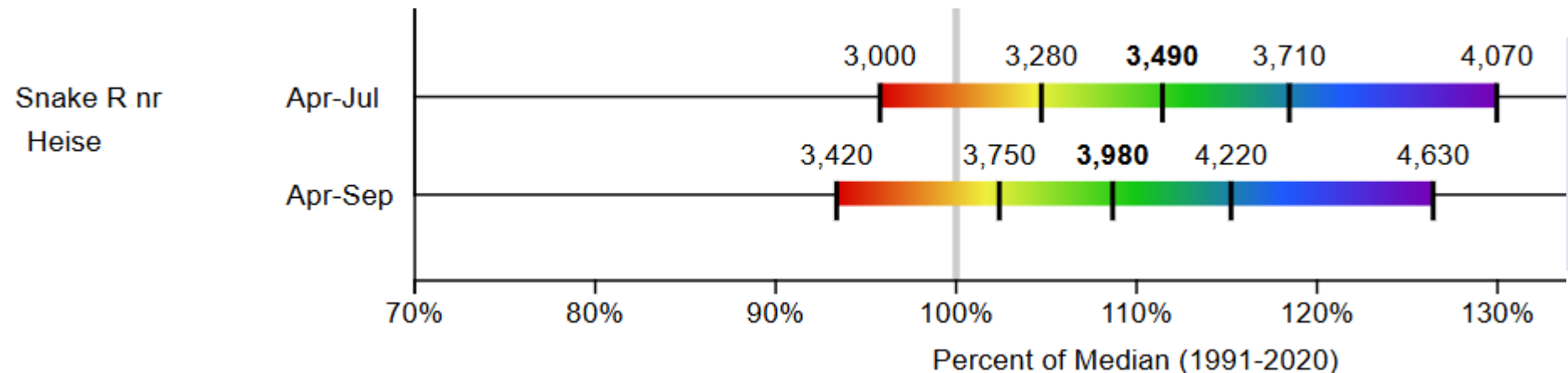
Streamflow Forecast Volume, 50% Exceedance Probability	Percent NRCS 1991-2020 Median	April - July, April 1, 2025
---	-------------------------------	-----------------------------

Streamflow Forecast Volume, 50% Exceedance Probability	Percent NRCS 1991-2020 Median	April - July, April 1, 2025
---	-------------------------------	-----------------------------

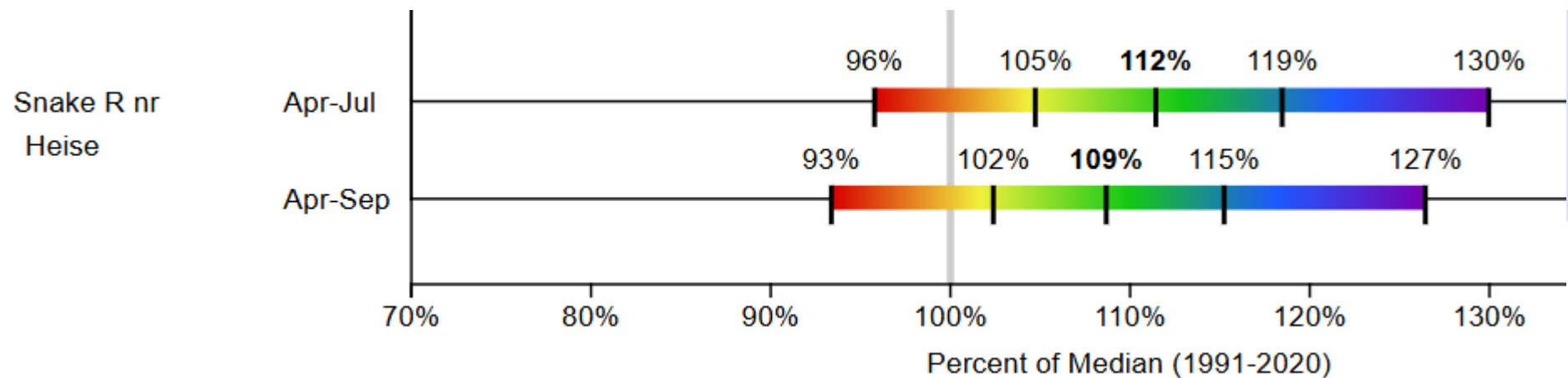
Streamflow Forecast Volume, 50% Exceedance Probability	Percent NRCS 1991-2020 Median	April - July, April 1, 2025
---	-------------------------------	-----------------------------



# Streamflow Forecasts for April 1 at Heise



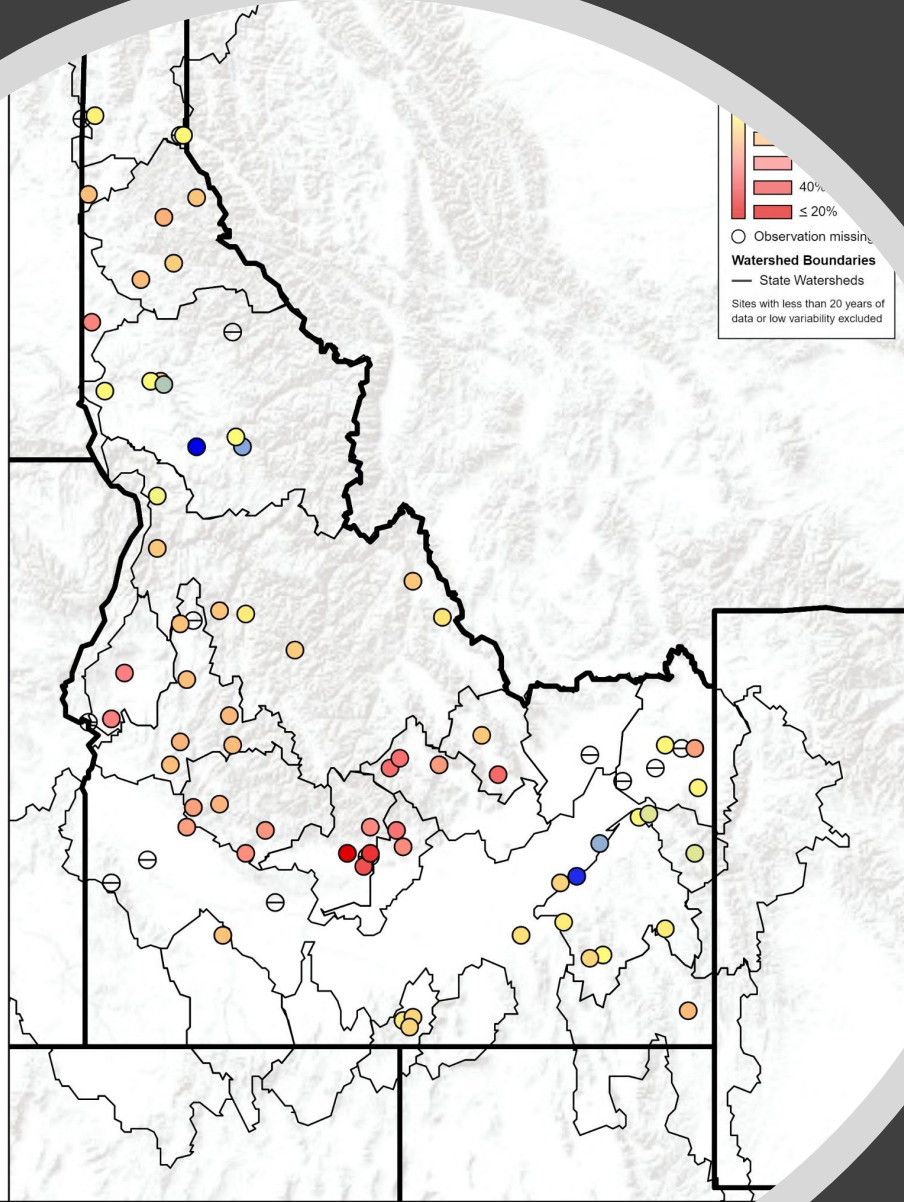
KAF  
(270 kaf increase  
from March. 1)



Percent of 30-year  
normal **median**  
**+9% increase**



# Thank you!



<https://www.nrcs.usda.gov/idaho/snow-survey>



Erin Whorton



erin.whorton@usda.gov



208-685-6983





— BUREAU OF —  
RECLAMATION

# Upper Snake Advisory Committee Meeting

## Upper Snake Operations Update

April 10, 2025

Presenter: Brian Stevens

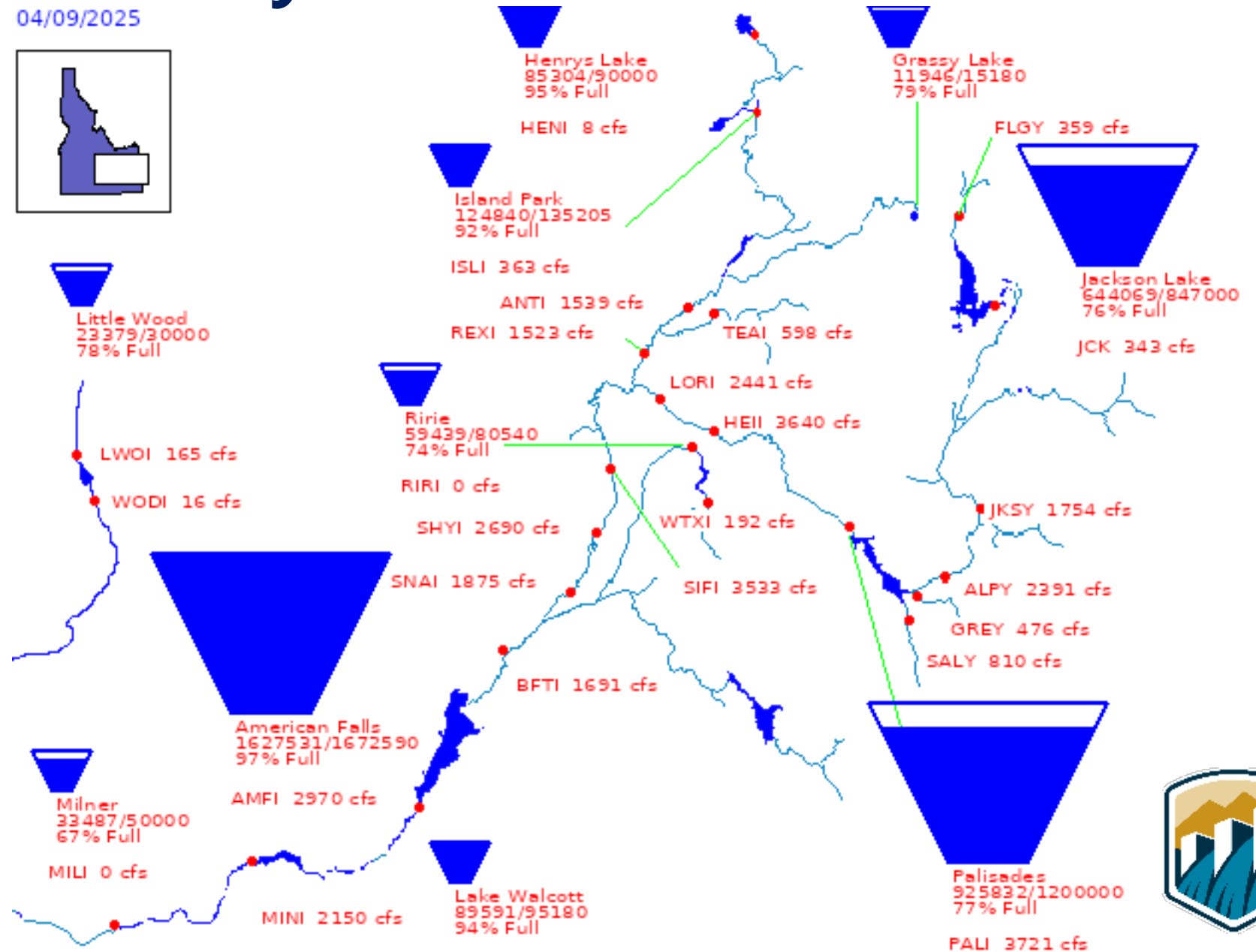


# Reservoir System Conditions

## Summary

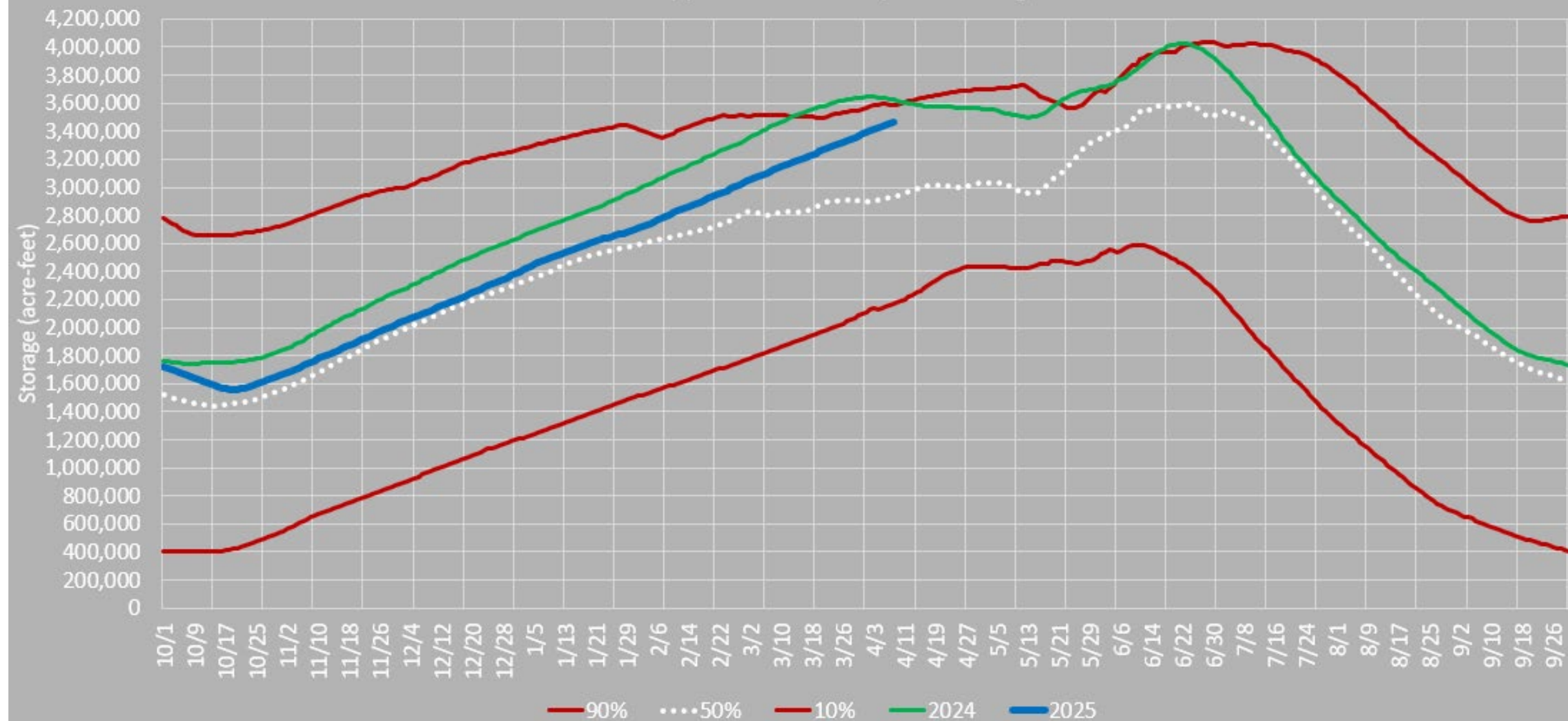
86% Full  
3.48 MAF Currently in Storage  
562 KAF Left to Fill  
118% 91-20' Average  
117% 91-20' Median  
116 KAF less than 2024  
508 KAF more than median

04/09/2025

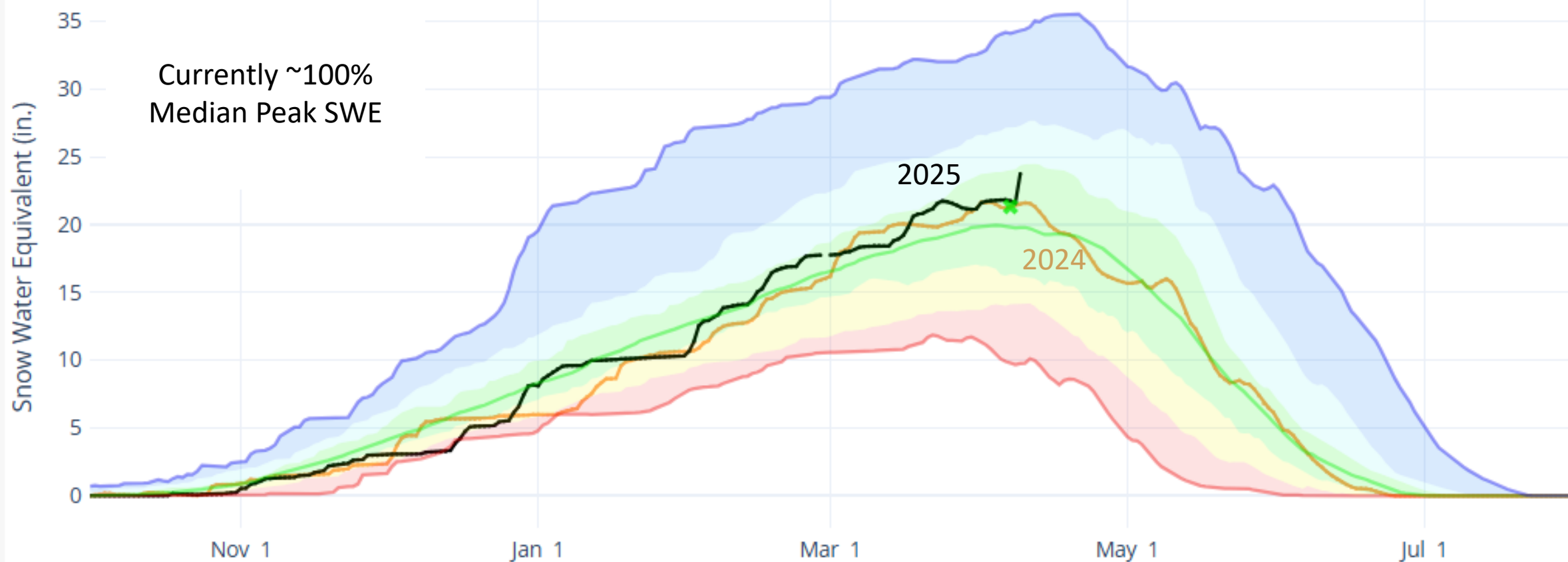




Upper Snake Total System Storage



# AWS Plot | SNOW WATER EQUIVALENT IN SNAKE AB MILNER

[NWCC Home](#)[Interactive Map](#)[Site Plots](#) ▾[Site Tools](#) ▾[Basin Plots](#) ▾[Basin Tools](#) ▾[Water Supply](#) ▾☐ Add Title☐ Active Only☐ Greyscale Stats.☐ Clear Controls[Link to data: CSV / JSON](#)

# Updated Forecasts as of 4/3/2025

March 2025

## CURRENT MONTHLY FORECAST SUMMARY APR 1, 2025

FORECAST POINT	FORECAST PERIOD	1991-2020 AVERAGE (KAF)	FORECAST (KAF)	PERCENT NORMAL
*** HEISE	APR-JUL	3304	3380	102%
JACKSON LAKE	APR-JUL	770	724	94%
ISLAND PARK	APR-JUL	200	170	85%
TETON	APR-JUL	347	330	95%
*** RIRIE	APR-JUN	55	65	119%
*** LITTLE WOOD	APR-JUL	72	57	79%

\* Coordinated with USACE

PERCENT  
NORMAL

94%

86%

79%

87%

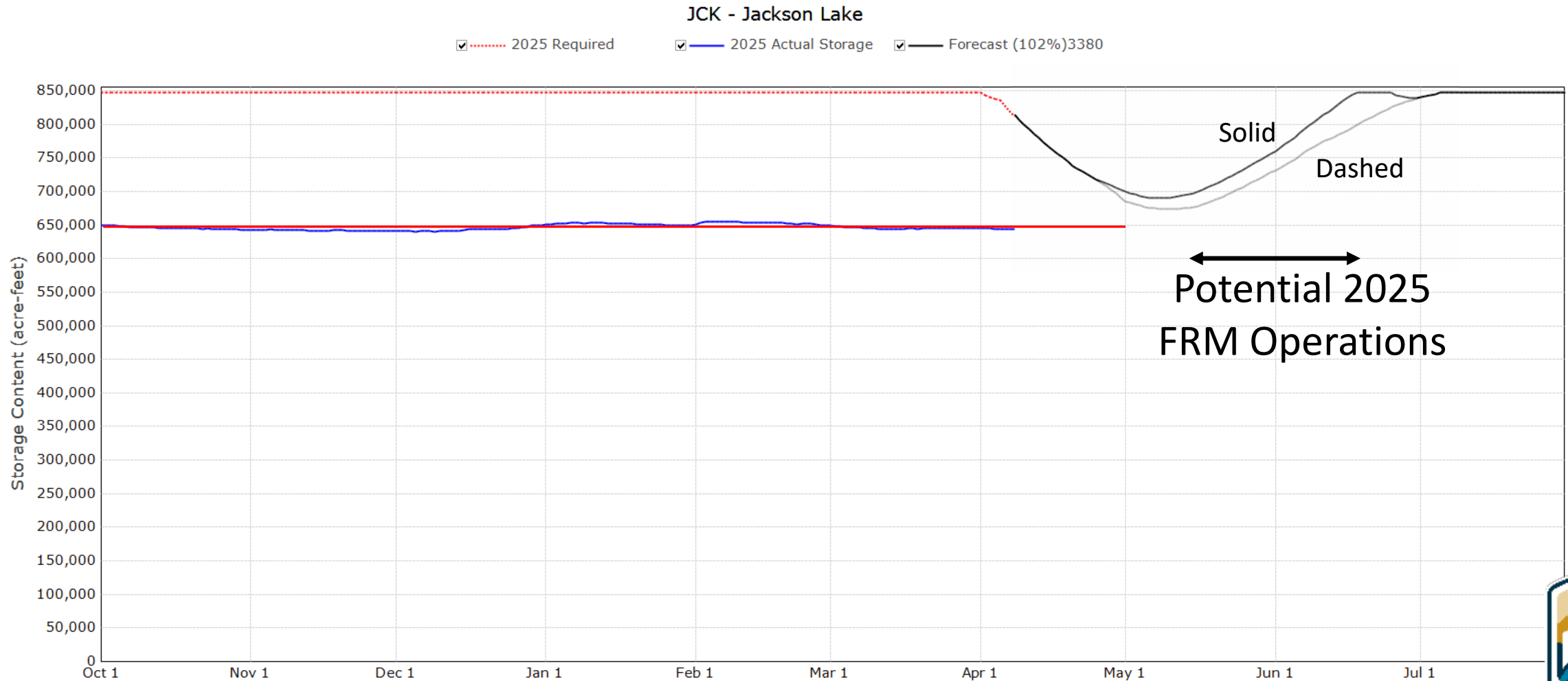
106%

88%



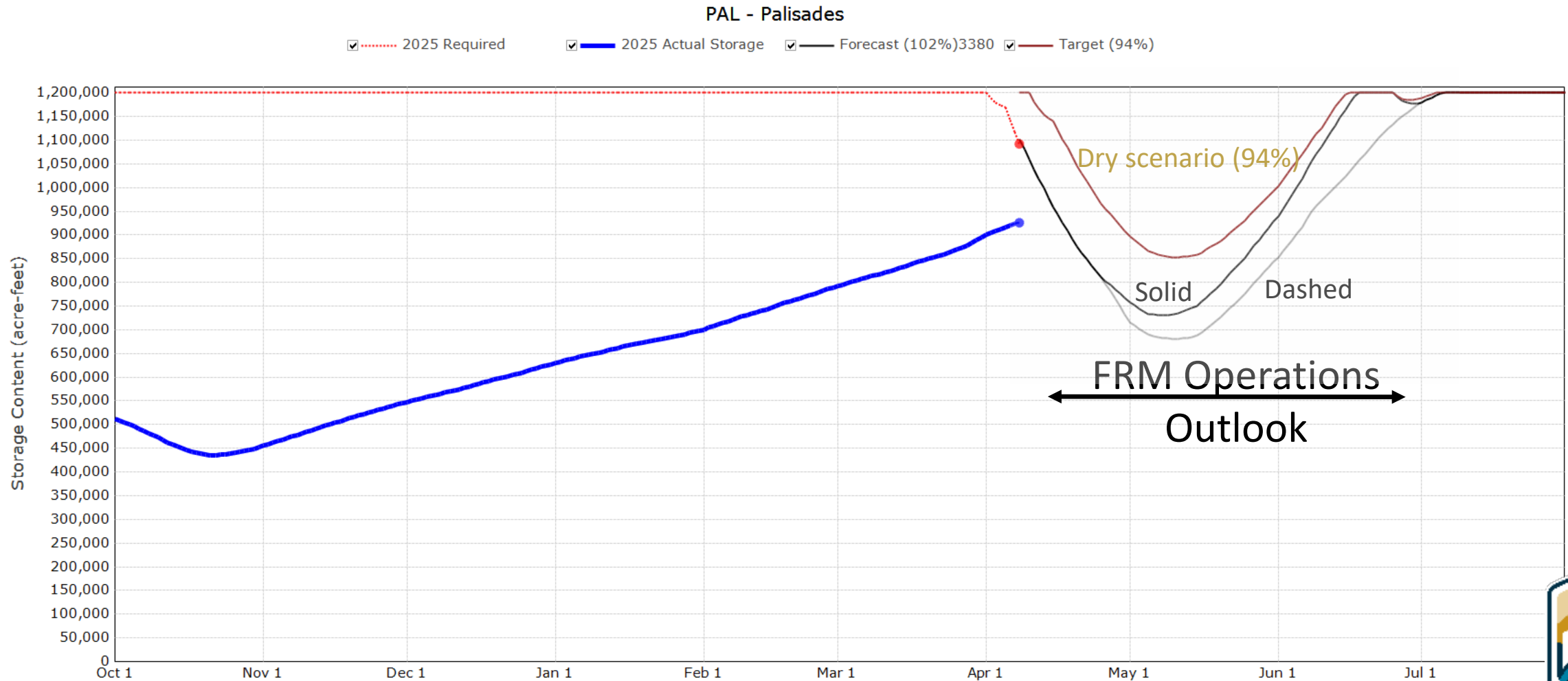
# Jackson Lake Operations

- Inflow currently ~450 cfs
- After coordination with the US Army Corps of Engineers Jackson Lake releases are being decreased to reach 280 cfs by EOD 4/9 to conserve water for storage allocations this year



# Palisades Reservoir Operations

- Inflow currently ~3,000 cfs
- Flood Risk Management operations beginning this week, outflow going from 900 cfs early this week to 6,000 cfs by end of day 4/10



# Inflow Outlook

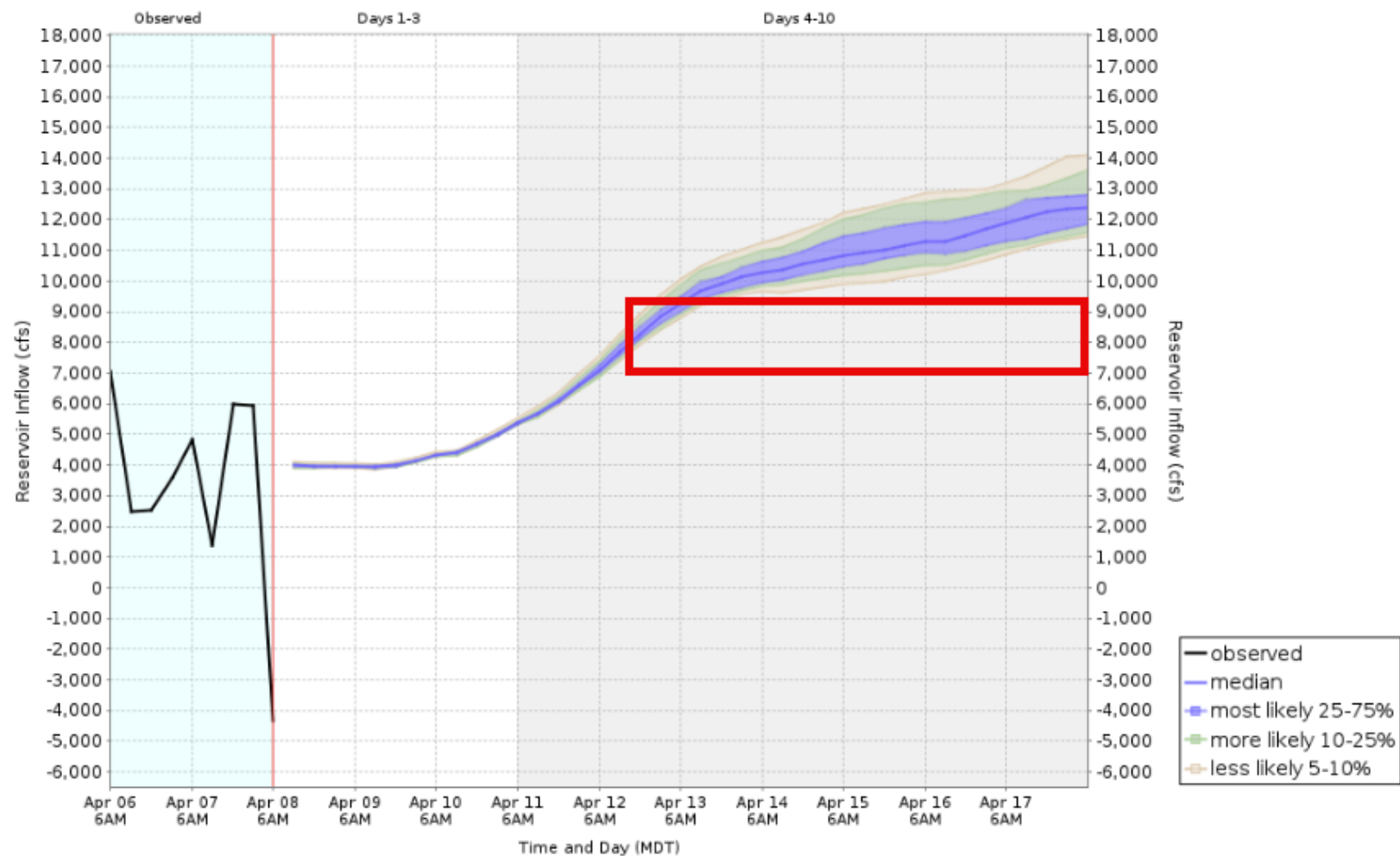
## HEFS - 10 Day Reservoir Inflow Probabilities

Based on Hydrologic Ensemble Forecast Service Model Simulations  
Used to Estimate the Range of Possible Reservoir Inflows



Apr 08 - Apr 18, 2025

### AFRI1 - American Falls Res





# Lower Valley Reservoir Operations

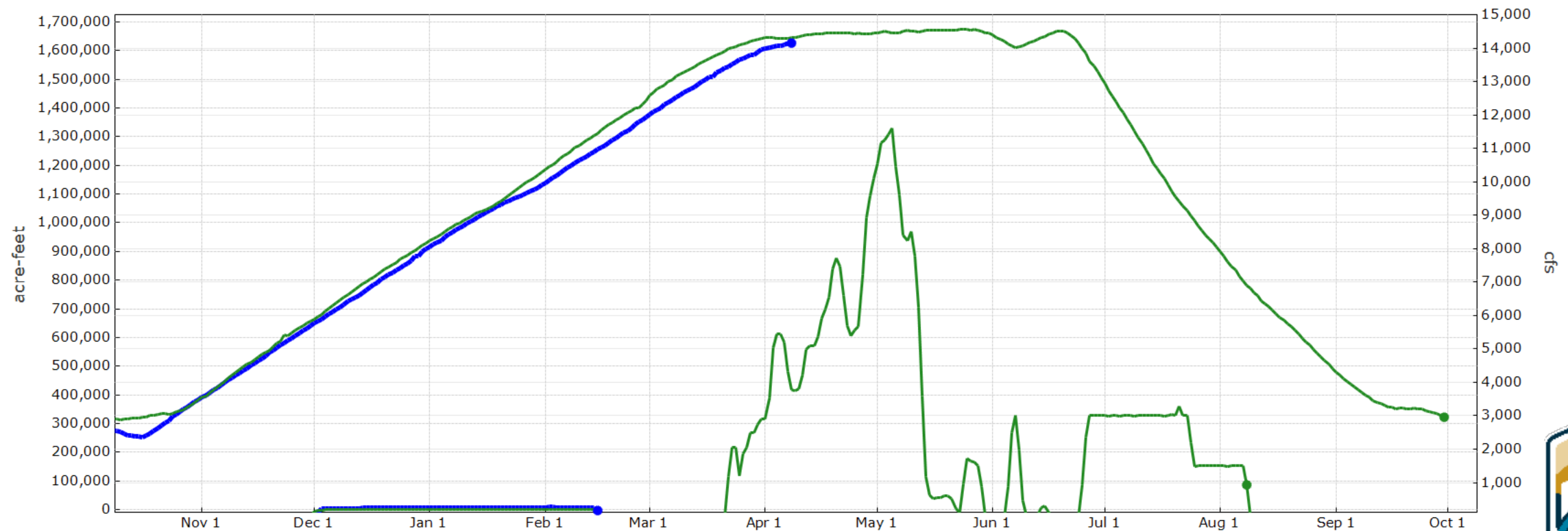
1. Approximately 50,000 acre-feet space left to fill in lower valley reservoirs
2. Inflow to American Falls projected to go from current ~3500 cfs to ~10,000 cfs over the next 10 days
3. Lower Valley Depletions currently ~3,000 cfs
4. Eventual filling lower valley space at ~12,000 acre-feet per day
5. Anticipate fill rate to vary depending on runoff and diversions

## Current Plan

1. Minidoka Dam outflow at least 2,700 cfs on Friday morning
2. Anticipating spill past Milner on Friday, between 10 and 50 cfs
3. Due to #1 and #2 physically occurring, and the decision yesterday between Co9, and WD1, and Reclamation to determine there is excess above that needed to satisfy existing Minidoka Project storage and hydropower rights – plan to waive Winter Water Savings Friday this week

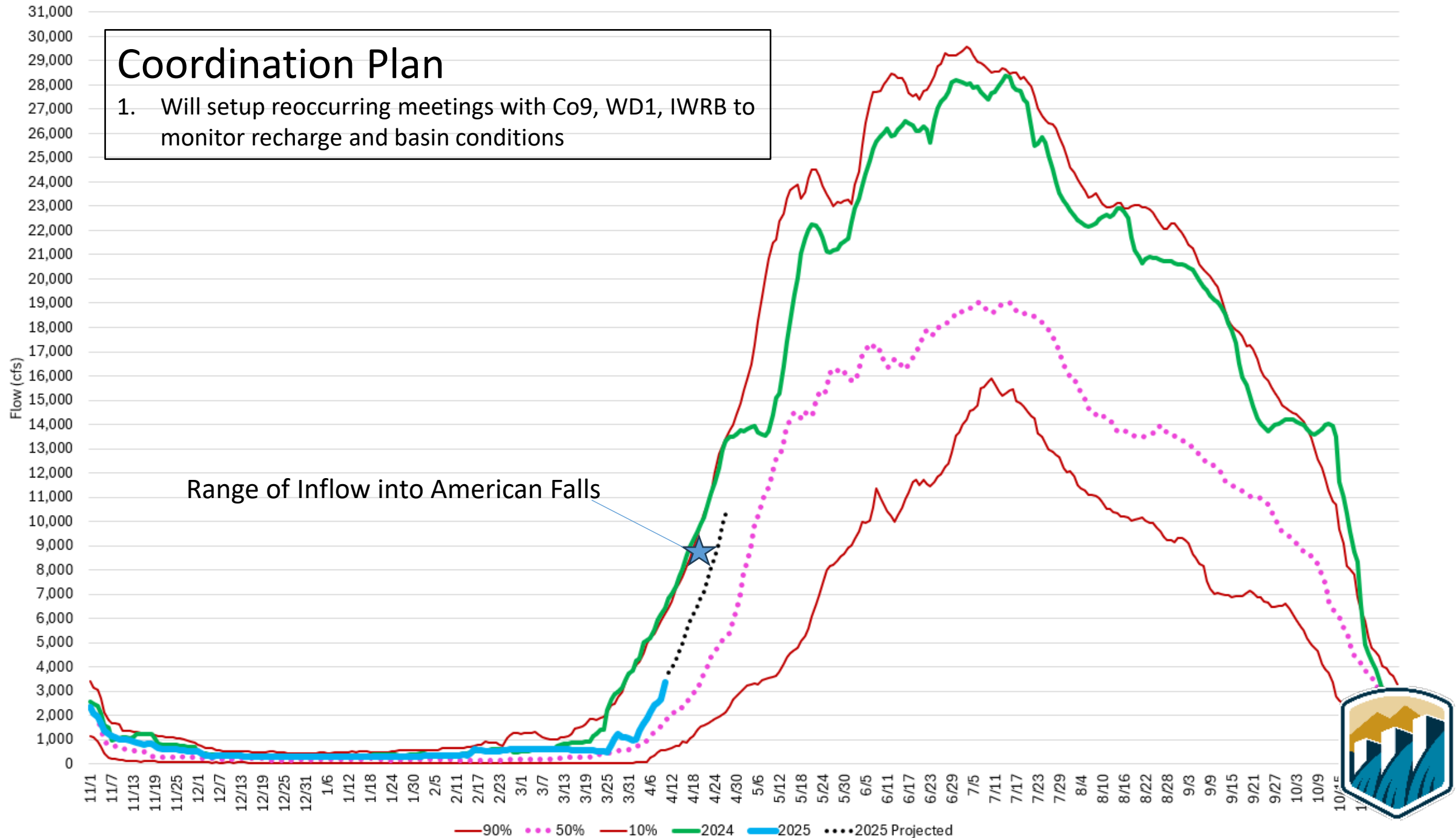
American Falls Reservoir and Flow Past Milner Dam

— amf af 2025 — amf af 2024 — mili qt 2025 — mili qt 2024



## Coordination Plan

1. Will setup reoccurring meetings with Co9, WD1, IWRB to monitor recharge and basin conditions



# Flow Augmentation Outlook

↓

October 31st Midnight Carryover 1000s AF	April 1 to Sept 30 Heise Forecast (1000s AF)				
	0	2,920	3,450	4,208	5,042
	to	to	to	to	or
	2,919	3,449	4,207	5,041	greater
0 - 599	0	0	0	150000	185000
600 - 899	0	0	60000	150000	185000
900 - 1499	0	60000	60000	150000	185000
→ 1500 - 2099	0	100000	★ 150000	185000	185000
2100 - 2599	0	100000	150000	205000	205000
2600 - 2999	0	185000	185000	205000	205000
3000 - 3199	60000	185000	185000	205000	205000
> 3199	100000	185000	185000	205000	205000

- The 2025 April through July Heise runoff forecast corresponds to an April 1 to September 30 Heise runoff forecast of 3,936 KAF (102%)
- Flow Augmentation Outlook
  - 150,000 AF rainbow chart rental from Water District 1
  - 469,000 AF total delivery from Projects in the Snake River Basin above Brownlee Reservoir





# For More Information

## Snake River Area Office

Bryan Horsburgh - Area Manager

208-383-2246

[bhorsburgh@usbr.gov](mailto:bhorsburgh@usbr.gov)

## Upper Snake Field Office

Mike Hilliard – Assistant Area Manager

208-678-0461 (x34)

[mhilliard@usbr.gov](mailto:mhilliard@usbr.gov)

Brian Stevens – Water Operations Supervisory Civil Engineer (x24)

[bstevens@usbr.gov](mailto:bstevens@usbr.gov)

Jeremy Dalling - Water Operations Civil Engineer (x25)

[jdalling@usbr.gov](mailto:jdalling@usbr.gov)

Darrin Fredrickson - Staff Assistant (x17)

[dfredrickson@usbr.gov](mailto:dfredrickson@usbr.gov)

## Snake River Operations Web Sites

Upper Snake water information site -

<http://www.usbr.gov/pn/hydromet/uppersnake/index.html>

USBR HydroMet - <http://www.usbr.gov/pn/hydromet/>

Northwest River Forecast Center - <http://www.nwrfc.noaa.gov/rfc/>

NRCS SNOTEL Data - <http://www.id.nrcs.usda.gov/snow/>

