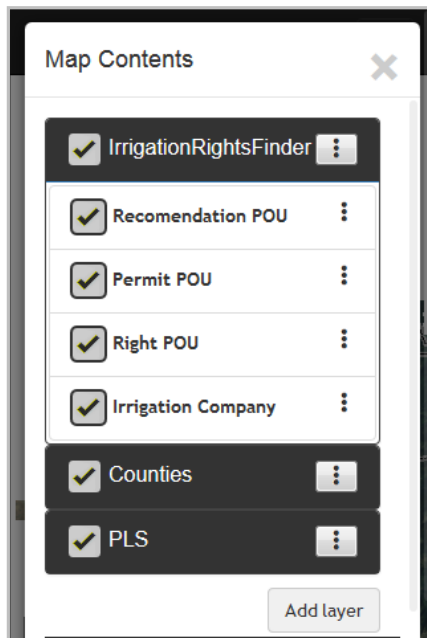


# Using the Irrigation Rights Finder

Last updated October, 2015

Web address: <http://maps.idwr.idaho.gov/map/IrrigationRights>

Questions? Contact [GISInfo@idwr.idaho.gov](mailto:GISInfo@idwr.idaho.gov)



## Initial Dialogs and Map

This tool is made available to help you determine if water is available for irrigation for your area of interest.

When you browse to the **Irrigation Rights Finder** map, you will see a conditions-of-use disclaimer and then a dialog, entitled **Map Contents**, which allows you indicate which water rights-related layers you wish to search – three types of place-of-use (POD) and irrigation companies.

**Turning Layers On and Off** The PLS layer, the water rights layers and the Irrigation Company layer can be turned off/on using the checkboxes. Click on the **IrrigationRightsFinder** heading to expand or collapse the panel so that the names of the individual layer names are shown. You can select a background image from this dialog, as well. See **Changing the Background Image** at the end of this document.

You can navigate by using the “zoom” controls (+/-), in the upper, left corner of the map. You can click (or touch) and drag the map to position it. Pinch/pull gestures can be used on mobile devices.

## Click To Identify

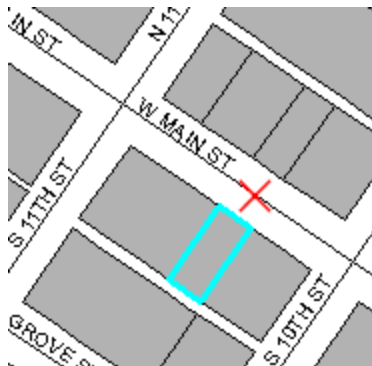
If you have the map positioned to your area of interest, click the map to identify the township and any water rights associated with that area or irrigation companies which supply water to that area.

## Finding an Area of Interest

If the **Locate by...** dialog is not shown, click **Find Location**, on the navigation bar.

### Search By Address

An address search will attempt to find an address on the map, and any water rights or irrigation companies that exist at that spot. This search does not look at Assessor or parcel records; rather it searches an address database that makes a link between an address and a point on the ground.



Searching by tax-lot parcel or address will find the same information because the parcel outlined in blue, and the red "X" both represent the same address.

Note: the search-tool can only locate physical addresses, not P.O. Boxes or Rural Routes.

To search by address, just enter the full address as shown in the top two examples. Make sure to include the state name.

Click the **Find** button. The map will be repositioned and “zoomed” to focus on the address you entered. A **Results** dialog will be displayed, containing the results of your search, if any. See **Query Results**, below.

## Search by PLSS

To search for all water rights and irrigation companies in a Public Land Survey System (PLSS) description, click on the **Public Land Survey Legal Description** heading to open the panel for that search. Enter the township, range, section and quarter-quarter of the PLSS. After entering the PLS information click the **Find PLS** button to search the database. There are many ways to express a PLSS description, however this application uses only digits for the township/range. Use the radio buttons to select north/south townships and east/west ranges.

## Search by Parcel Number (PIN)

To search for all water rights and irrigation companies in a tax-lot parcel, click on the **Tax Parcel** heading to open the panel for that search. Enter the parcel number (PIN) and select the proper county from the drop-down list. After entering the parcel information click the **Find Parcel** button to search the database.

The *Parcel Identification Number* (PIN) is the number that the county assessor uses to identify a parcel. This number can be found on the current assessment notice. Typically the number is 12-20 characters long, and can be a mixture of characters and digits. The PIN is only unique by county, so when entering a PIN into the Irrigation District and Water Rights Finder application, both a PIN and a county are required. Please contact your local Assessor's office for details on where to find the PIN on your assessment notice.

**Note:** In addition to searching by address, PLS or taxlot PIN, the new version of the map allows you to **search by coordinates** (as from a GPS unit or printed map) or by **water right point-of-diversion (POD)**. The POD may not be located within the place-of-use (POU).

## Query Results

You get query results by using the **Locate by...** dialog or by clicking on the map. Regardless of which tool you use, the query results are displayed within the **Results** dialog. This dialog will be presented in the center of the screen but can be moved by dragging it by the header (using the mouse or by touch).

As shown in the example below, when you click on a result (water right, irrigation company or township) the area of land associated with that highlighted row in the **Results** dialog will be darkened and a black outline will be drawn around it.

The screenshot shows the 'Irrigation Rights Finder' application interface. On the left is a map with various colored overlays representing water rights. A specific area is highlighted with a black outline. On the right is a 'Results' dialog box. The dialog box contains the following information:

**Search type:** Water Right Number; WaterRight POD number: 95-7680

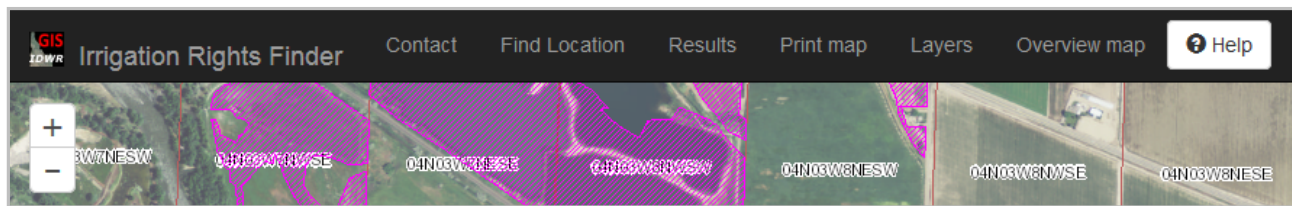
**Disclaimer:** Shapes represent an approximation of the water right extent. Please review each water right of interest either on-line (choose the Details link) or by contacting IDWR (208-287-4800).

| Water Rights # | Type        | Owner           | Action                  |
|----------------|-------------|-----------------|-------------------------|
| 95-7680        | Water Right | BRADLEY IVERSON | <a href="#">Details</a> |

Below the table is a horizontal scrollbar and a section labeled 'Irrigation Companies' which is currently empty.

## Map Tools

If you use the application on a desktop or laptop computer, the navigation bar shows the tools – each word or small phrase acts as a button (for example, **Print map**). If you use the application from a smart phone or tablet browser you will see an icon with three stacked, vertical bars. Click that icon to show the list of tools.



Access the IDWR's home page and contact information by clicking on the **IDWR GIS** icon or the **Contact** button. Use the **Find Location** tool to focus the map and query the database for water rights or irrigation company data. **Results** shows/hides the dialog that displays the results of your query, if any. The **Print map** tool allows you to print a map of the location you are viewing, along with the tabular results of your query. The **Layers** tool shows the dialog where you choose which types of irrigation information you wish to query.

### Overview Map

Use the overview map to see what portion of Idaho is visible on the map. Because your area-of-interest covers a small area, it will show as a very small dot on the overview map. The example, at left, indicates that the displayed map covers portions of several counties.

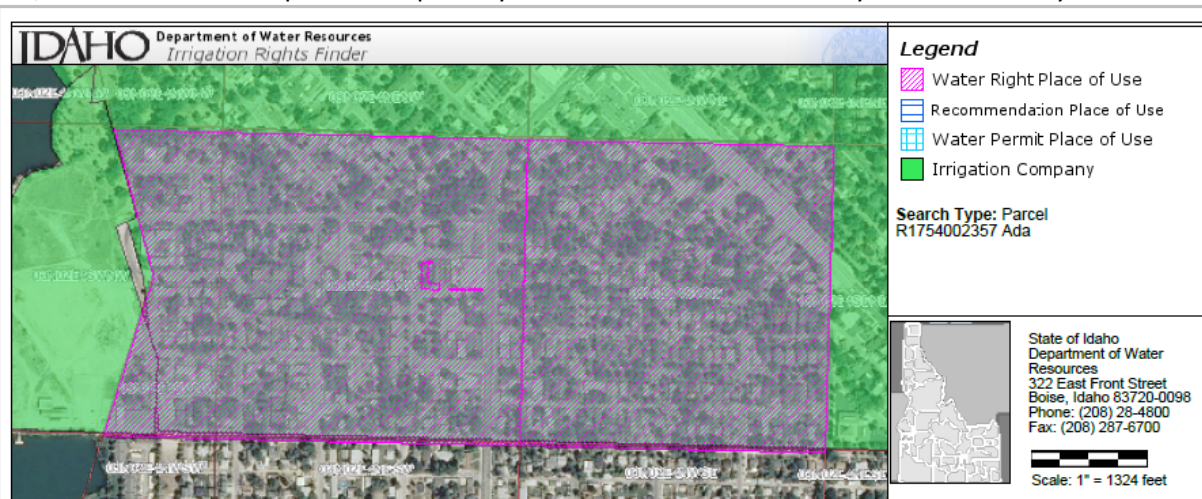


### Changing the Background Image

Click the **Layers** tool and select from several background images in the drop-down list, named **Background**. The "NAIP" images are aerial photos from the year shown in the name. "TOPO" refers to UGSS topographical maps. The "Streets" image shows street names.

### Printing a Map

Click the **Print Map** button to print a map of the area shown on the screen, with legend, search type and the results derived from your query. In this example, two water right results are shown, one inside the other, in the center of the printed map. They are both within the boundary of the Boise City Canal Co.



### Search Results

| Irrigation Companies |             |                  |
|----------------------|-------------|------------------|
| BOISE CITY CANAL CO  |             |                  |
| Water Right Number   | Process     | Owner            |
| 63-10910             | Water Right | RICHARD L JORDAN |
| 63-17925             | Water Right | ALBERTSONS INC   |

**Disclaimer:** Shapes represent an approximation of the water right extent. Please review each water right of interest either on-line (choose the Details link) or by contacting IDWR (208-287-4800). All land within the boundary may not have water delivery. Please contact the company for more information regarding water delivery to your area of interest.

## Mobile Devices and Browsers

This application is designed to be used on any “personal computer,” from large desktops to small smart phones. However, the interaction between the user and the interface varies widely with the size, resolution and type of hand-held, touch-capable devices, be they cell phones or tablets. It has been tested on Android tablets and phones. For Android devices, the native browser and Chrome work the best. It works on iOS devices from the iPhone 3, forward. The Opera browser is not recommended on iOS devices. The application has not been tested on Windows phones except to ensure basic functionality – displaying and navigating the map.

## Make the Map Faster

The background map on the initial screen is there to show major features to allow you to find your area of interest. You can make the map respond more quickly by turning it off.

To turn off the background image, use the **Layers** tool on the navigation bar. Click the “Background” checkbox to remove the checkmark, or click the drop-down list, beneath the checkbox, and change the value to “None selected.”

## Conditions of Use

The Idaho Department of Water Resources is maintaining this web site as a public service. The Idaho Department of Water Resources strives to ensure that all technical data and other information made available to the public through this web site is accurate, complete and in conformance with the Idaho Public Records Act. Neither the Department of Water Resources nor the State of Idaho, however, assumes any legal responsibility for the accuracy or completeness of the information contained on this site.

***Persons using information from this site for official purposes, or other purposes, for which accuracy and completeness are required, are hereby notified that they should first verify the information with the public records or other primary sources from which the information was obtained.***