



## Grand View-Bruneau GWMA

---

Erik Boe, P.E.

Section Manager, Ground Water Protection, IDWR

February 24, 2021



## What is a Ground Water Management Area?

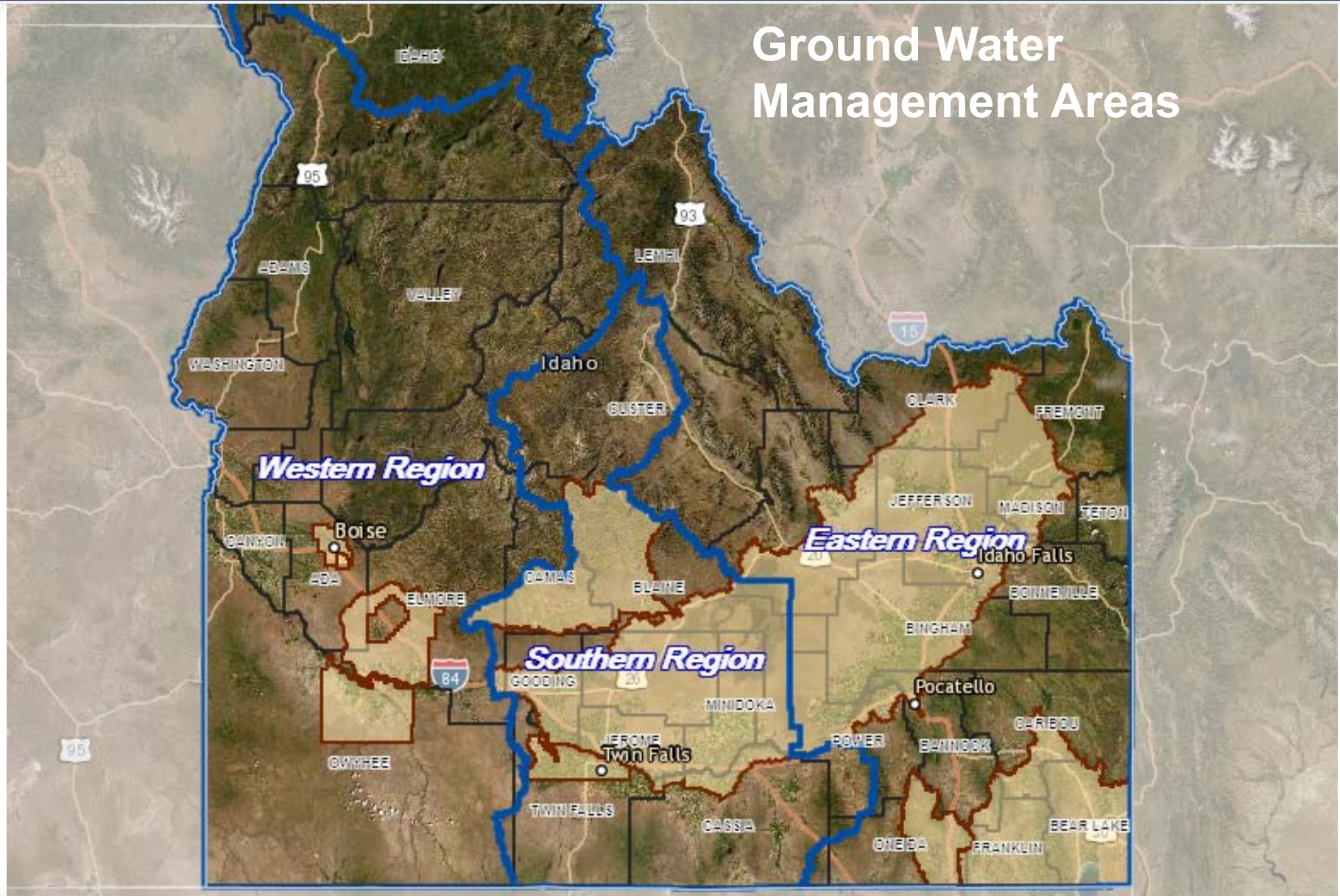
- GWMA is all or part of a groundwater basin that the Director determines may be approaching conditions with an insufficient groundwater supply under current or projected rates of withdrawal.
- Idaho Code 42-233b authorizes the Director of IDWR to designate a GWMA.
  - Based on own initiative or as a result of a petition.

# GWMAs in Idaho:

| Area   | Date Designated   | Map  | Hydrographs                 |
|--|-------------------|--|-----------------------------|
| <input checked="" type="checkbox"/> Banbury Hot Springs                | April 12, 1983    | <a href="#">Map</a>  | <a href="#">Hydrographs</a> |
| <input checked="" type="checkbox"/> Bear River                         | August 12, 2001   | <a href="#">Map</a>  | <a href="#">Hydrographs</a> |
| <input checked="" type="checkbox"/> Big Wood River                     | June 28, 1991     | <a href="#">Map</a>  | <a href="#">Hydrographs</a> |
| <input checked="" type="checkbox"/> Boise Front                        | June 15, 1987     | <a href="#">Map</a>  | <a href="#">Hydrographs</a> |
| <input checked="" type="checkbox"/> Eastern Snake Plain Aquifer (ESPA) | November 2, 2016  | <a href="#">Map</a>  |                             |
| <input checked="" type="checkbox"/> Grand View - Bruneau               | October 29, 1982  | <a href="#">Map</a>  | <a href="#">Hydrographs</a> |
| <input checked="" type="checkbox"/> Lewiston Plateau                   | May 20, 2013      | <a href="#">Map (SubArea A)</a><br><a href="#">Map (SubArea A1)</a><br><a href="#">Map (SubArea B)</a> | <a href="#">Hydrographs</a> |
| <input checked="" type="checkbox"/> Malad Valley                       | November 4, 2015  | <a href="#">Map</a>  | <a href="#">Hydrographs</a> |
| <input checked="" type="checkbox"/> Mountain Home                      | November 9, 1982  | <a href="#">Map</a>  | <a href="#">Hydrographs</a> |
| <input checked="" type="checkbox"/> Rathdrum Prairie                   | December 11, 2002 | <a href="#">Map</a>  | <a href="#">Hydrographs</a> |
| <input checked="" type="checkbox"/> Southeast Boise                    | October 14, 1994  | <a href="#">Map</a>  | <a href="#">Hydrographs</a> |
| <input checked="" type="checkbox"/> Twin Falls                         | January 11, 1984  | <a href="#">Map</a>  | <a href="#">Hydrographs</a> |



## Ground Water Management Areas



# GWMAAs – Key Provisions

- Spatially defines area impacted by insufficient ground water supply.
- Director can approve a management plan for the area

# Management Plan

- Document that describes how groundwater resources will be managed within a GWMA
- Developed with assistance of an Advisory Committee
- Ultimately approved by the Director
- ❖ Water right holders participating in an approved plan are not subject to curtailment so long as they are in compliance with the ground water management plan

# Advisory Committee

## Composed of:

- Diverse group of individuals with a positive standing in the community and a vested interest in the groundwater resource

## Purpose:

- Forum for discussion and communication
- Dispute resolution
- Development of Management Plan



# What's in a Management Plan?

Flexible, sections of the document may include:

- Introduction
- Goals
- Legal Provisions
- Measurement and Monitoring
- Aquifer Recharge
- Adjudication of Water Rights
  - Framework for managing water diversions
- New Appropriations



# Measurement and Monitoring Section

Defines how measurement and monitoring within the GWMA will be accomplished, but how do we implement?

- Typically form an organized entity to help implement and execute the Measurement and Monitoring Plan
- Typical process:
  - Order creating the organized entity (a few types)
  - Order issued to install measurement devices
  - Inventory all diversions within the District (excluding § 42-111)
  - Measure and monitor
  - Annual report

# Organized Entities

Selected based on needs of the GWMA, options include:

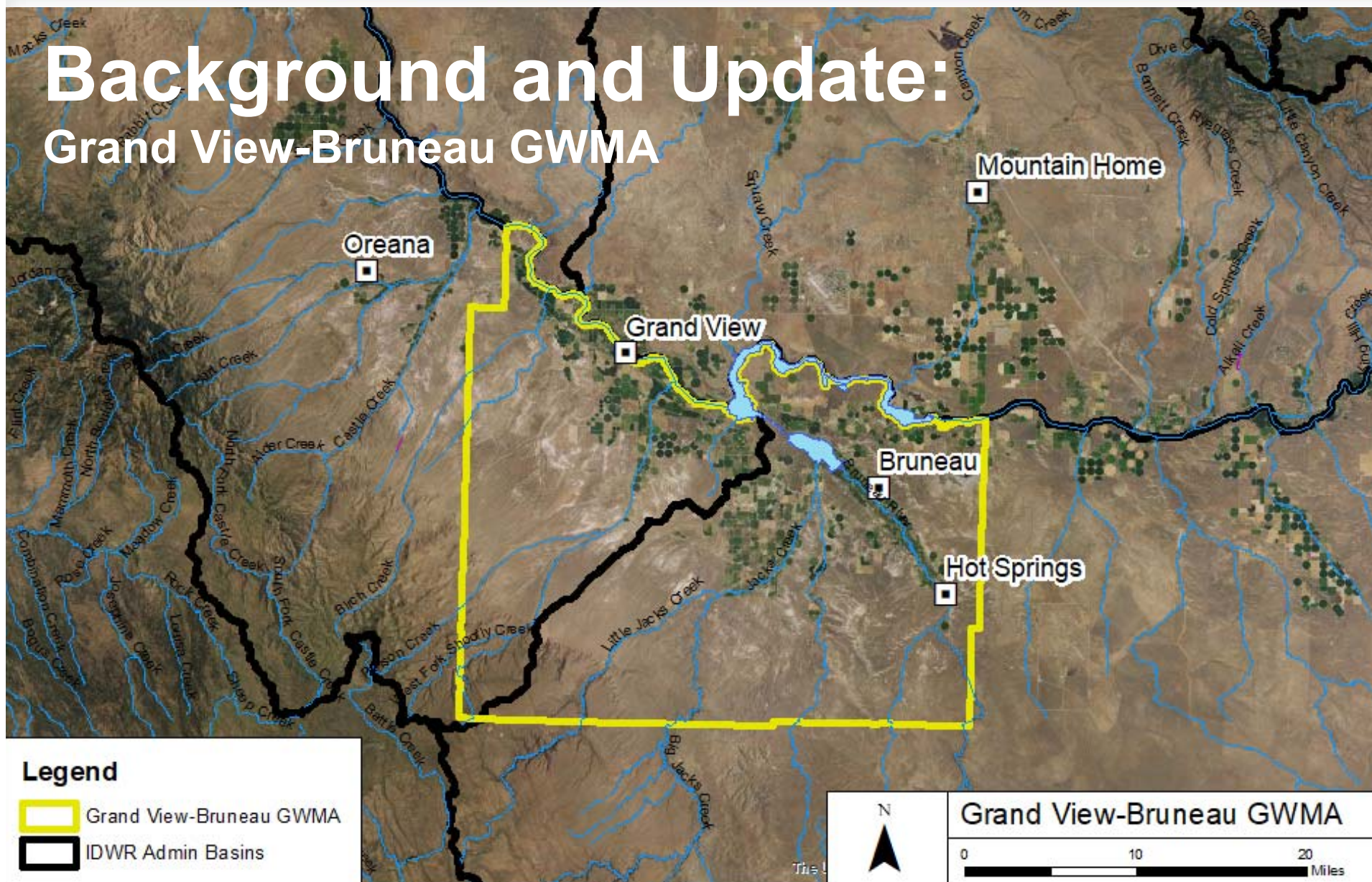
- *Water District (WD)*
  - Chapter 6, Title 42 (Idaho Code)
- *Water Measurement District (WMD)*
  - Chapter 7, Title 42 (Idaho Code)
  - Malad GWMA
- *Groundwater District (GWD)*
  - Chapter 52, Title 42 (Idaho Code)
  - Magic Valley GWD, North Snake GWD
- *Groundwater Management District (GWMD)*
  - Chapter 51, Title 42 (Idaho Code)
  - Bruneau GWMD

# Organized entities can also:

- Facilitate repair and maintenance
  - Inventory diversions (flowing wells) in need of repair
  - Coordinate with users
- Facilitate cost sharing or grant programs
  - NRCS Environmental Quality Incentive Program (EQIP)
  - NRCS Regional Conservation Partners Program (RCPP)
  - BOR WaterSMART
  - Others



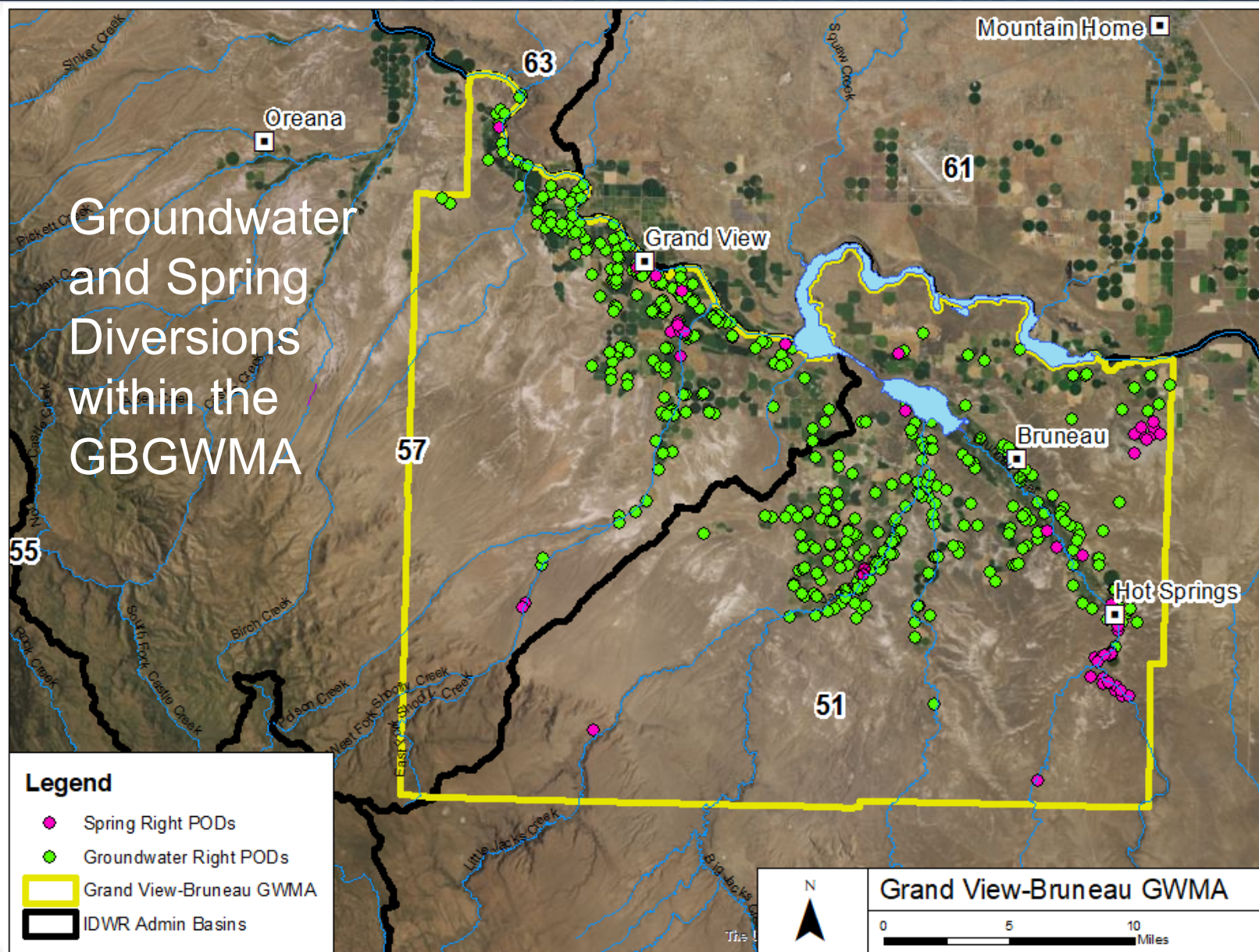
# Background and Update: Grand View-Bruneau GWMA



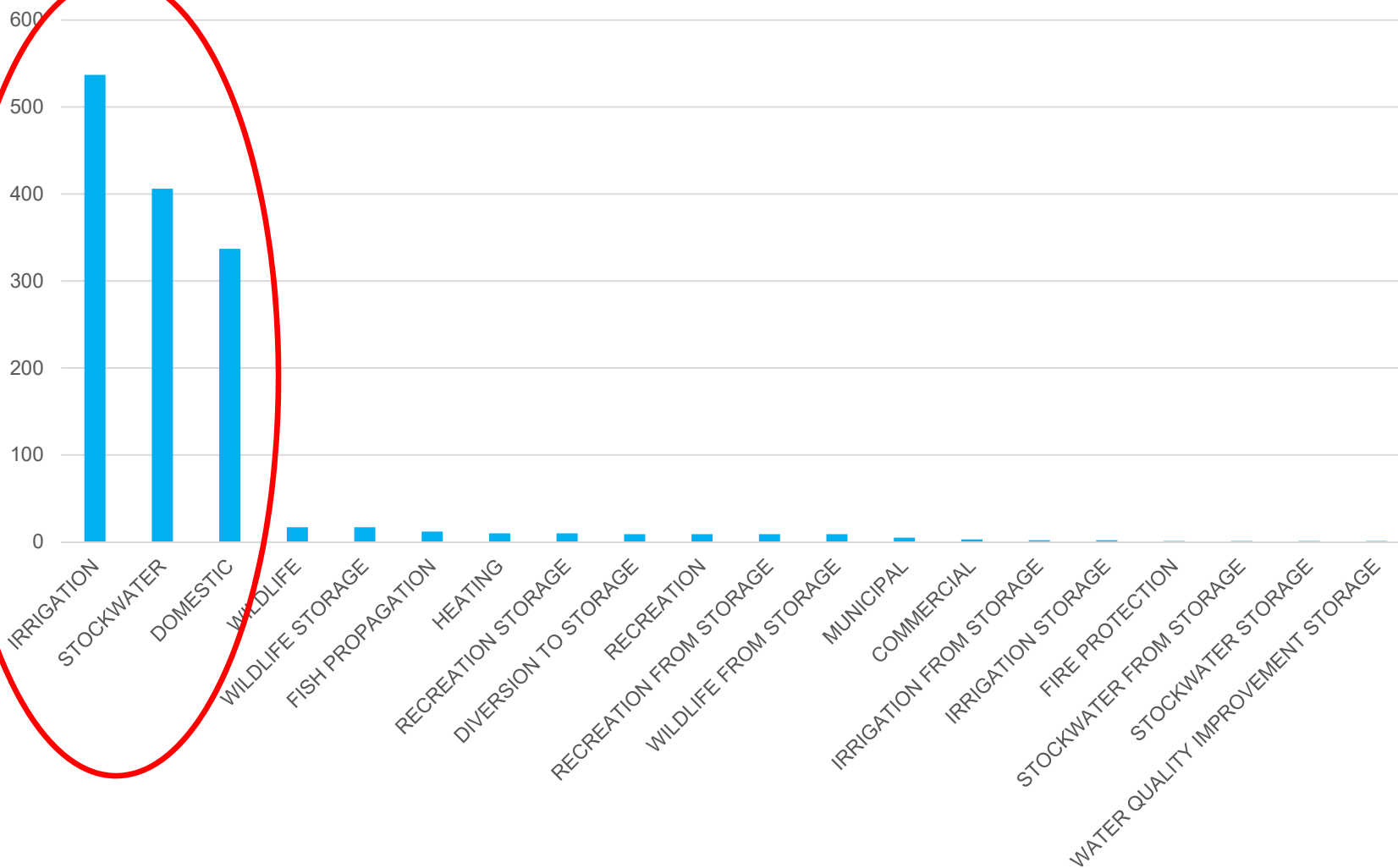


# Grand View-Bruneau GWMA

- Established on October 29, 1982
- In response to increased and projected increases in groundwater withdrawals and declining spring flows from the geothermal aquifer system
- No Management Plan, limited groundwater level monitoring program



## Water Right Uses (Groundwater and Springs)

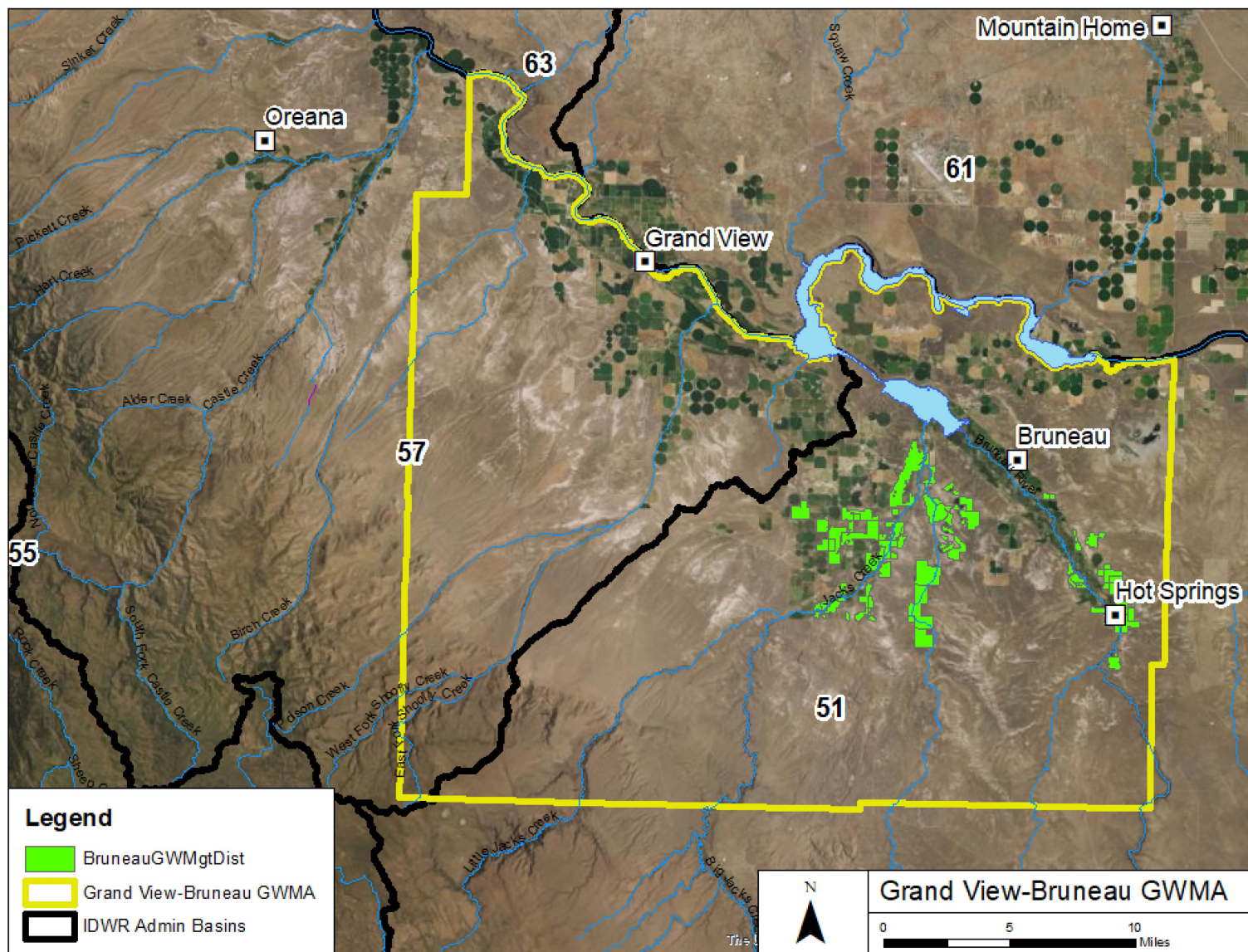


# Existing GWMD within the GBGWMA

## Bruneau GWMD

- Established on July 27, 2000 (Preliminary Order)
  - Petitioned for and signed by local water users
- Created primarily to provide financing and repair of wells within the Bruneau area, but has been relatively inactive
- ❖ Area is not the same as the GBGWMA
- ❖ No legal provisions for expansion





# Measurement and Monitoring Program Implementation

Advisory Committee consider options:

- *Water District (WD)*
- *Water Measurement District (WMD)*
- *Groundwater District (GWD)*
- *Groundwater Management District (GWMD)*

# Questions?