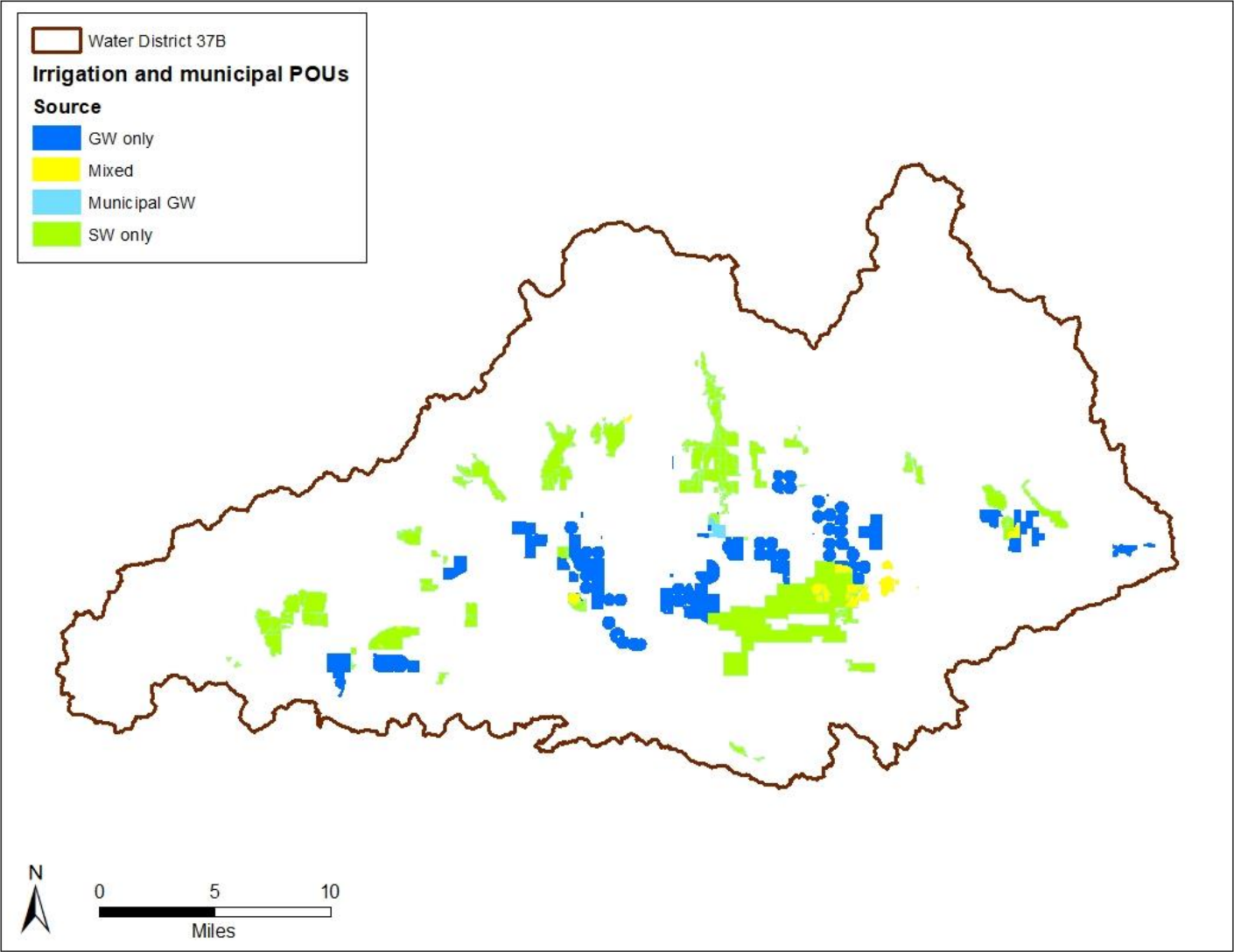
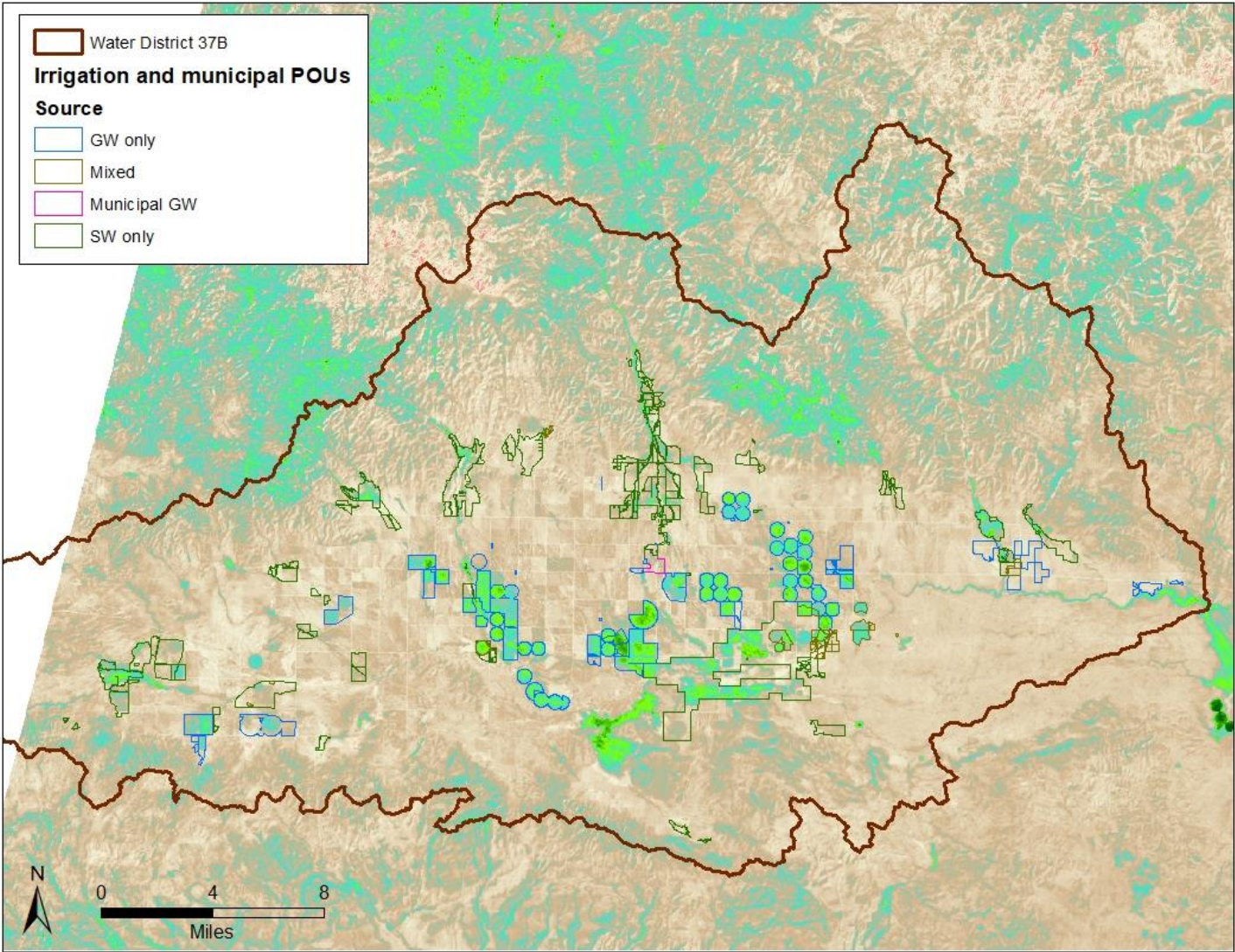


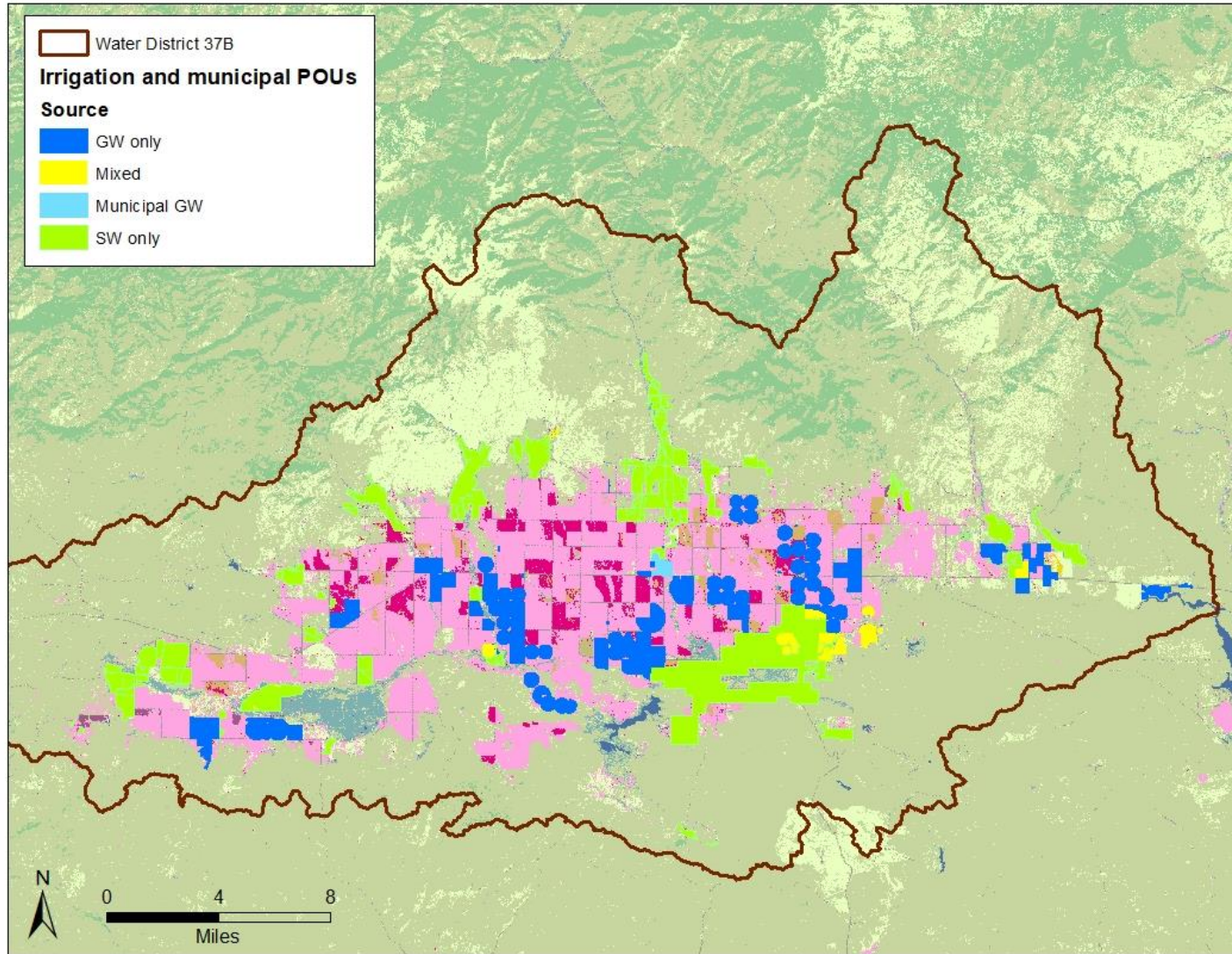
Water right places of use



Seasonal "CIR" raster (METRIC ET less PRISM precip)



NASS Cropland Data Layer



Average consumptive use of irrigation water (2015 – 2020)

Source	Irrigated acres (in WRPOU and CU > 150 mm)	Mean CU depth on irrigated lands (ft)	Mean CU depth on non- irrigated cropland (ft)	Mean adjusted CU depth (ft)
GW only	11,294	1.43	0.55	0.88
Mixed	1,084	1.34	0.55	0.79
Municipal GW	114	0.88	0.55	0.34
SW only	12,944	1.05	0.55	0.51

Estimated GW consumptive use

Year	Recorded GW pumping ¹ (AF)	GW Consumptive Use (AF)	Efficiency
2015	12,149	11,001	91%
2016	11,732	11,260	96%
2017	10,054	7,957	79%
2018	13,245	7,870	59%
2019	10,057	8,128	81%
2020	15,180	13,965	92%
Average AF	12,070	10,030	83%
Average cfs	16.7	13.8	

¹Missing pumping records filled in with estimated data.