


Water District Creation for Ground Water Rights in Basin 61, Mtn. Home Area



IDWR Public Hearing
January 12, 2016
Mountain Home, ID
Tim Luke, IDWR

Welcome

- Water Users/Right Holders
- Elected Officials?
- IDWR Staff

Hearing Purpose & Agenda

- Background Presentation/Information
 - Describe proposed action
 - Reasons for proposed action
 - Review of water districts & operations
 - Review of timelines/expectations
- Questions/Answers?
- Taking of Testimony

Hearing Notice Proposal

Create one water district in Administrative Basin 61 and small adjacent area in Basin 63 to administer all ground water rights except:

- Ground water domestic and stockwater rights as defined by Idaho Code § 42-111

Hearing Notice Proposal

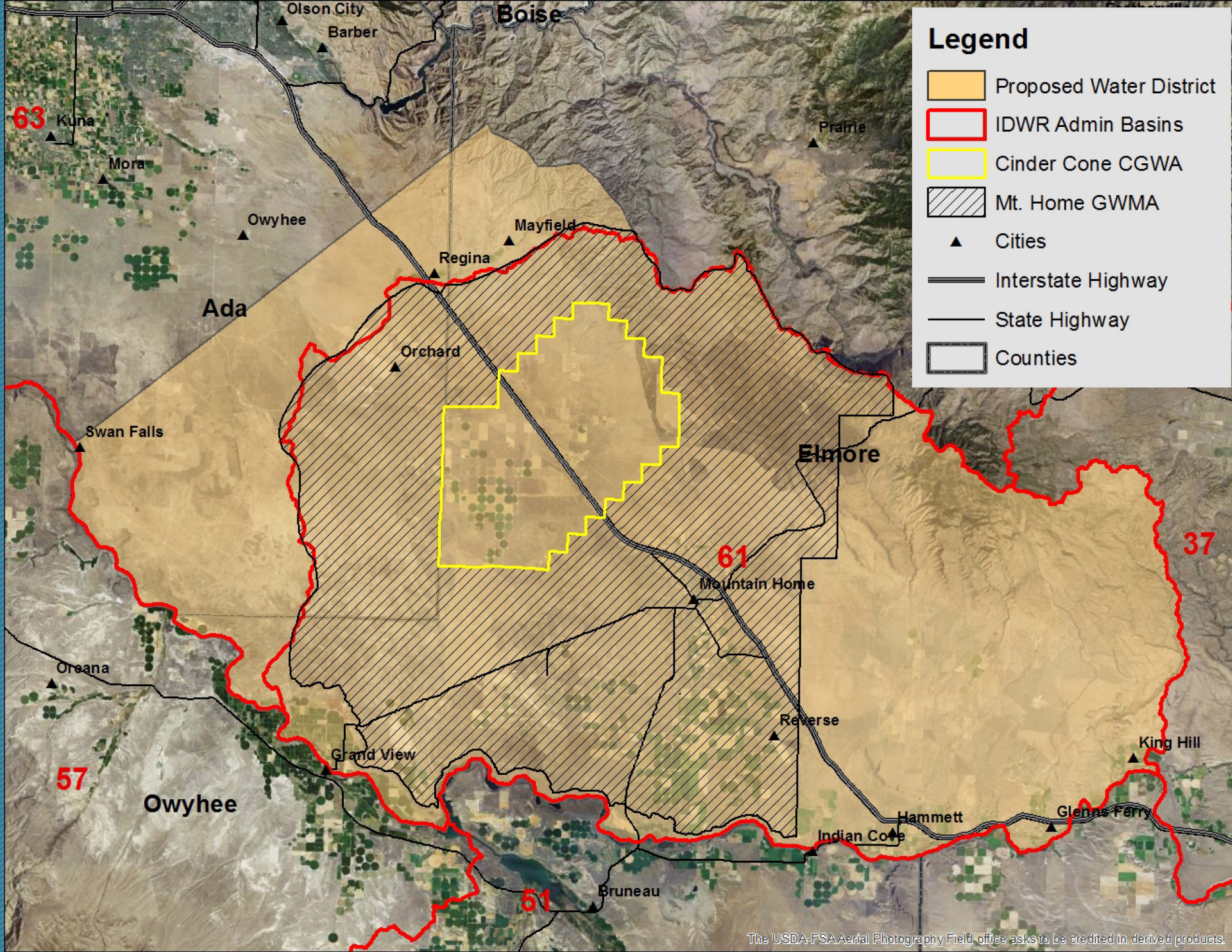
We did not propose:

- Changes or modifications to existing surface water districts
 - No merging of existing water districts
 - No inclusion of ground water rights in existing surface water districts

Area of Notice

- Ground water rights in Basin 61
- Ground water rights in Basin 63 around Mayfield area (16 rights)
 - About 325 Notices Sent*
 - Excluding domestic and stock water rights as defined by Idaho Code § 42-111 & in-stream stock water rights

* About 75 of 325 notices undeliverable



Number of Water Rights and Diversions in Area

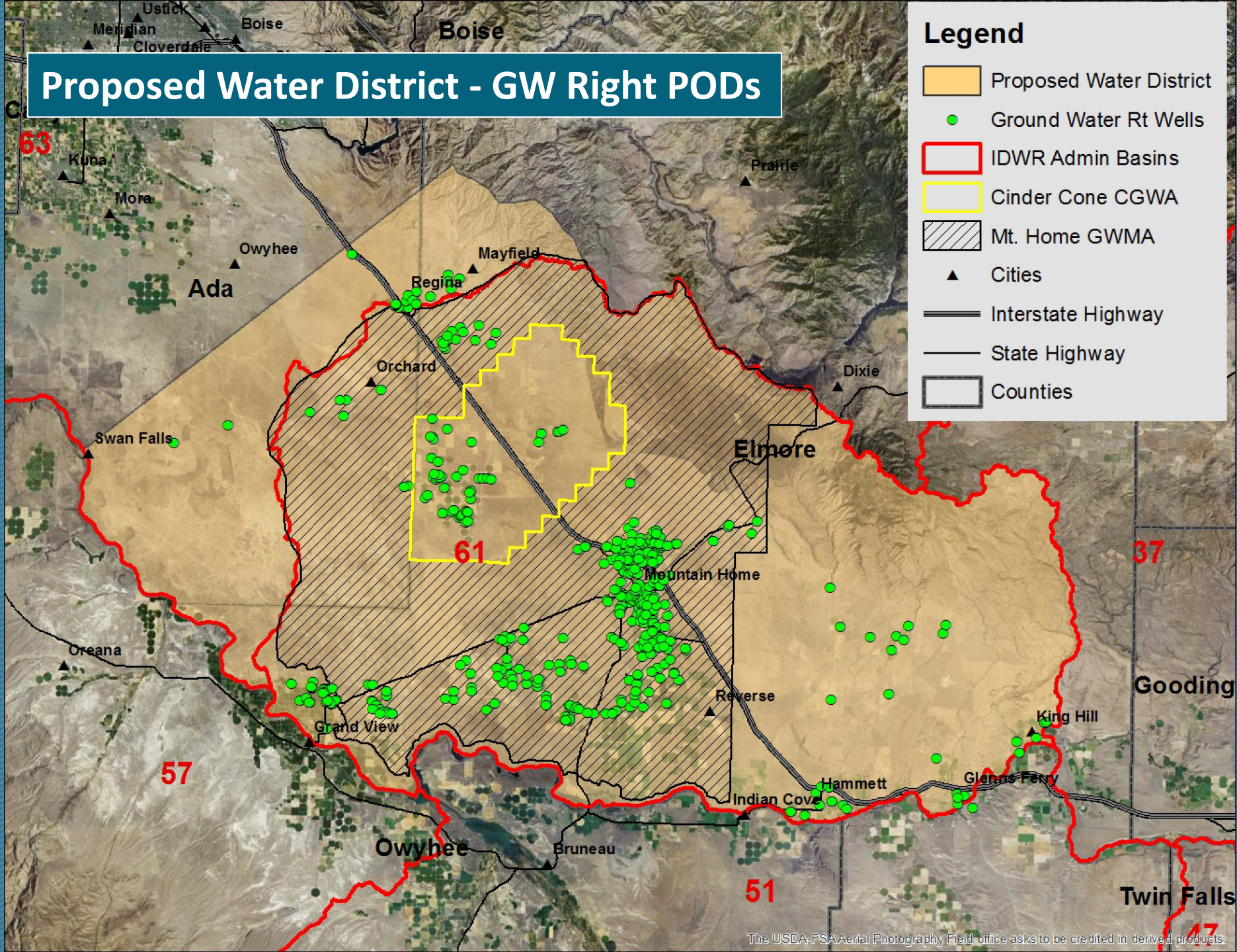
Ground Water Rights and Diversions

- About 460 ground water rights total and \approx 460 wells
 - \approx 250 gw rts w/irrig use $>$ 5 acres; \approx 240 wells
 - \approx 140 gw rts w/irrig use \leq 5 acres; \approx 120 wells
 - \approx 70 non-irrigation gw rights total
 - 41 gw rights $>$ 0.24 cfs; \approx 100 wells
- Total ground water rights cfs (gross) \approx 568 cfs

Proposed Water District - GW Right PODs

Legend

- Proposed Water District
- Ground Water Rt Wells
- IDWR Admin Basins
- Cinder Cone CGWA
- Mt. Home GWMA
- Cities
- Interstate Highway
- State Highway
- Counties



Why is IDWR Proposing Water District Creation?

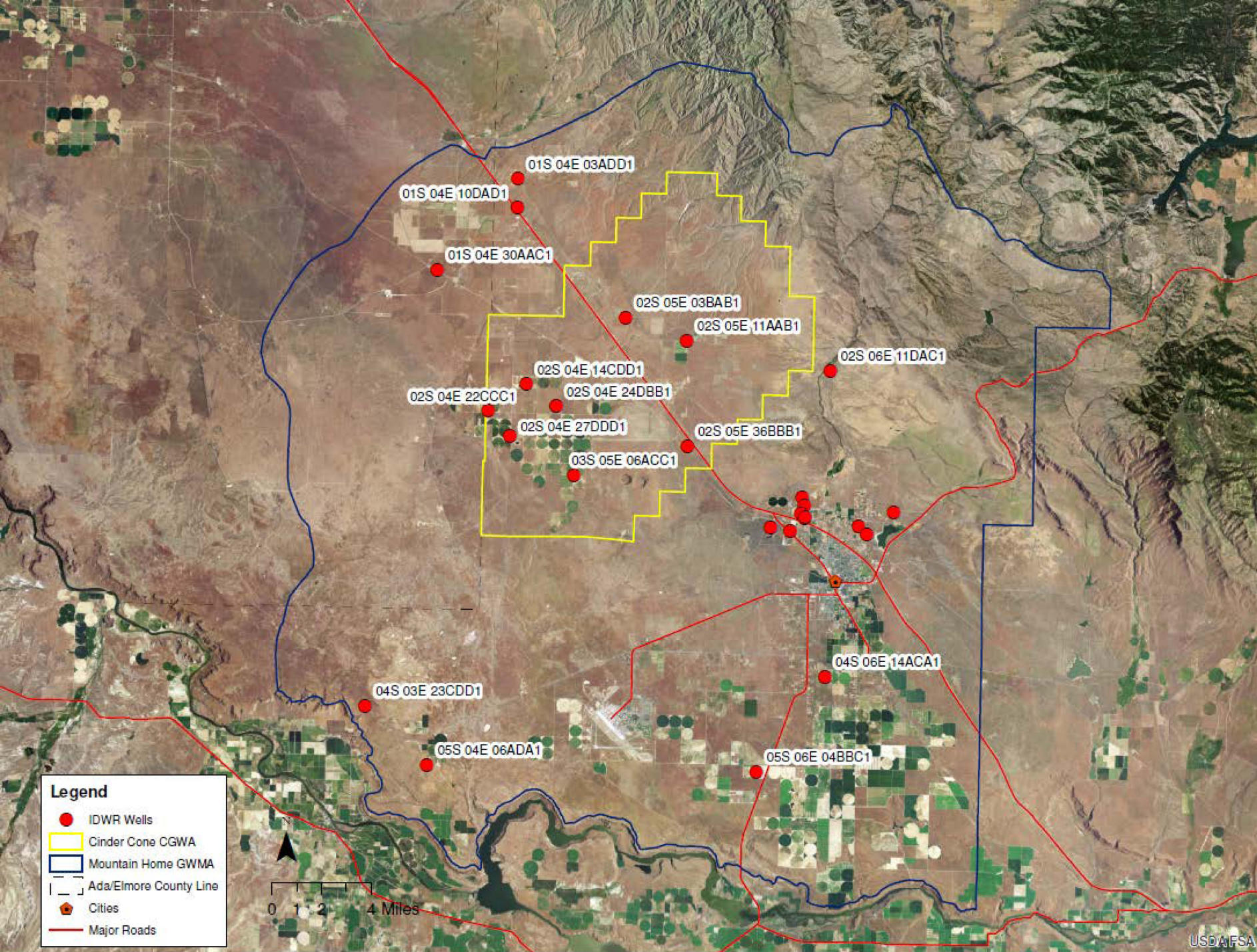
- SRBA is complete
 - SRBA Court issued Final Decree – August 24, 2014
- Administration is required for both surface and ground water rights
- Potential regulation of ground water rights in Mtn. Home GWMA/Cinder Cone CGWA
- Potential conjunctive administration of surface and ground water rights (also gw vs. gw)

Why Water District(s) are needed

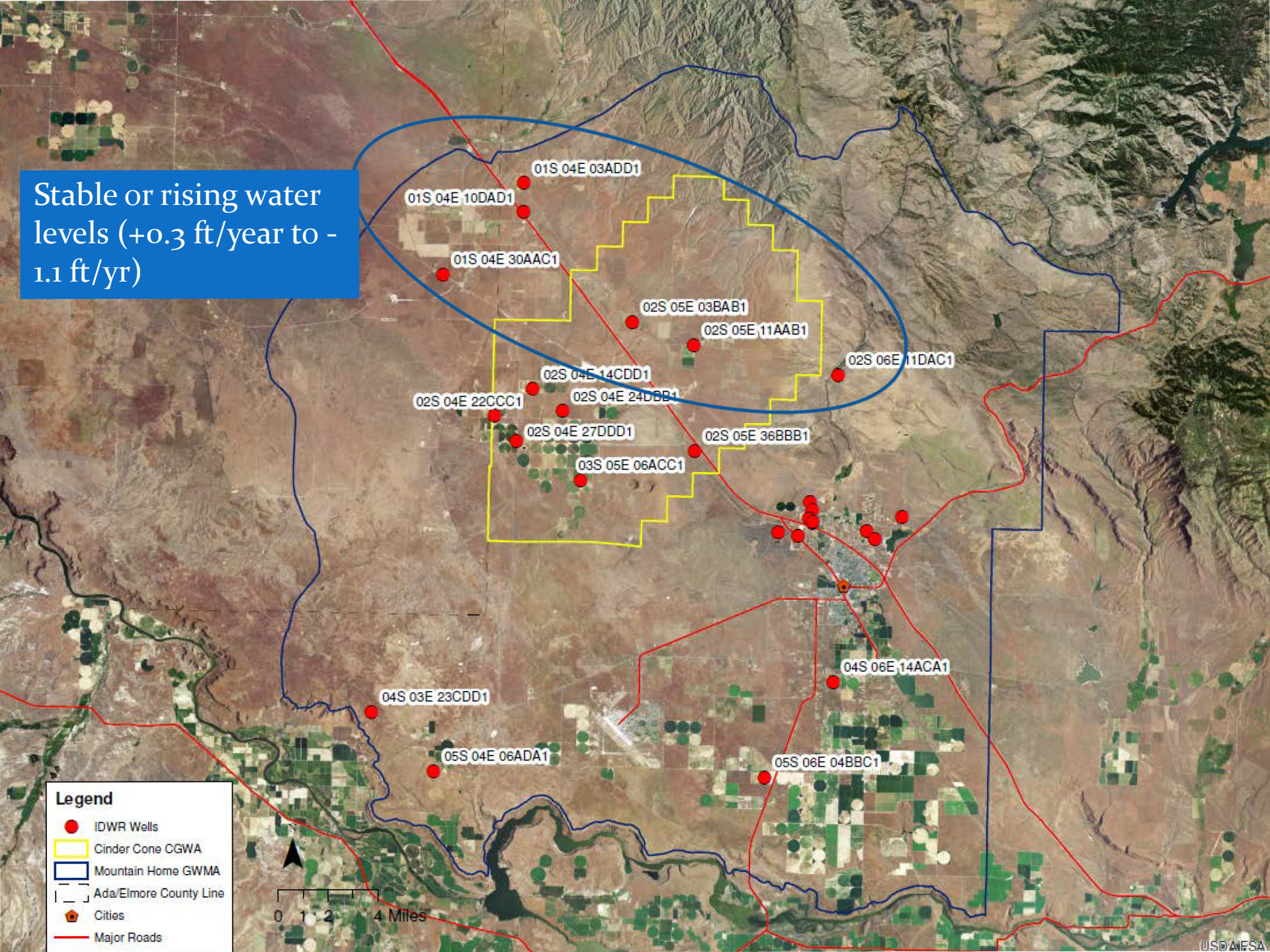
- Regulation
 - proper delivery of water, includes curtailing junior priority rights as necessary
 - measurement and reporting of water use
 - address unauthorized uses
 - assure diversions are within water right limits
- Administer/Manage water rights
 - assist IDWR with current/accurate records (ownership, diversion descriptions, transfers review)

Why Water District(s) are needed

- GWMA/CGWA – Potential Regulation
 - Director may limit water use until there is sufficient supply of ground water
 - Director may require measurement & reporting
 - necessary if limiting water use



Stable or rising water levels (+0.3 ft/year to -1.1 ft/yr)

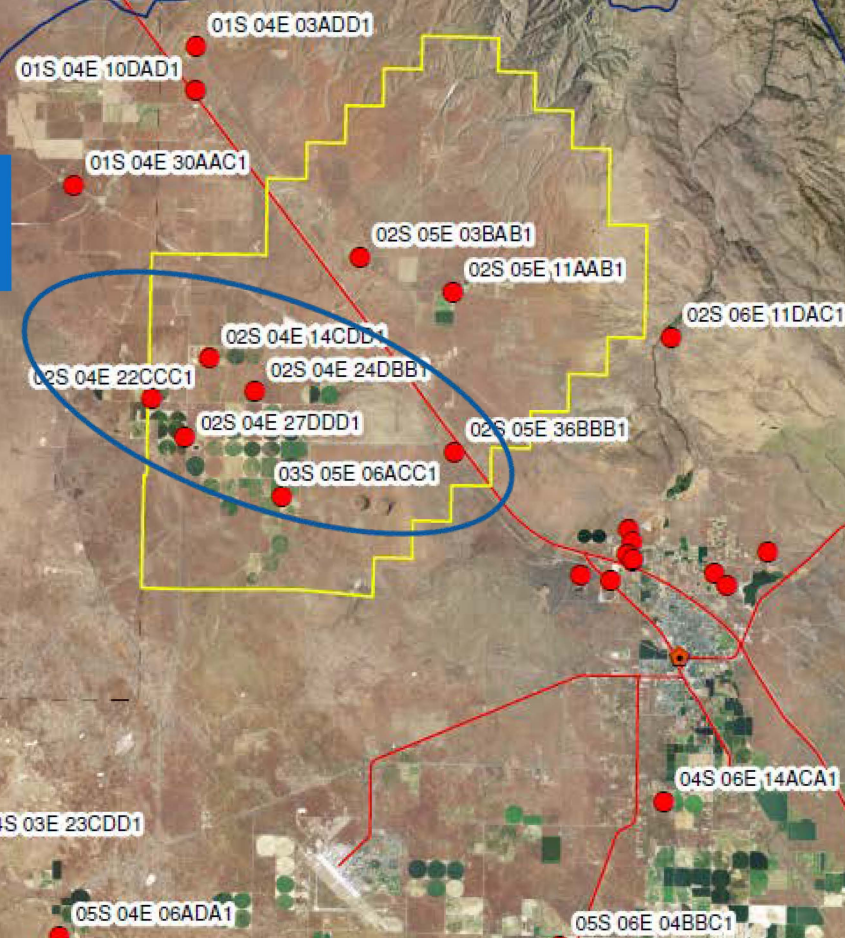


Legend

- IDWR Wells
- ▭ Cinder Cone CGWA
- ▭ Mountain Home GWMA
- ▭ Ada/Elmore County Line
- Cities
- ▬ Major Roads

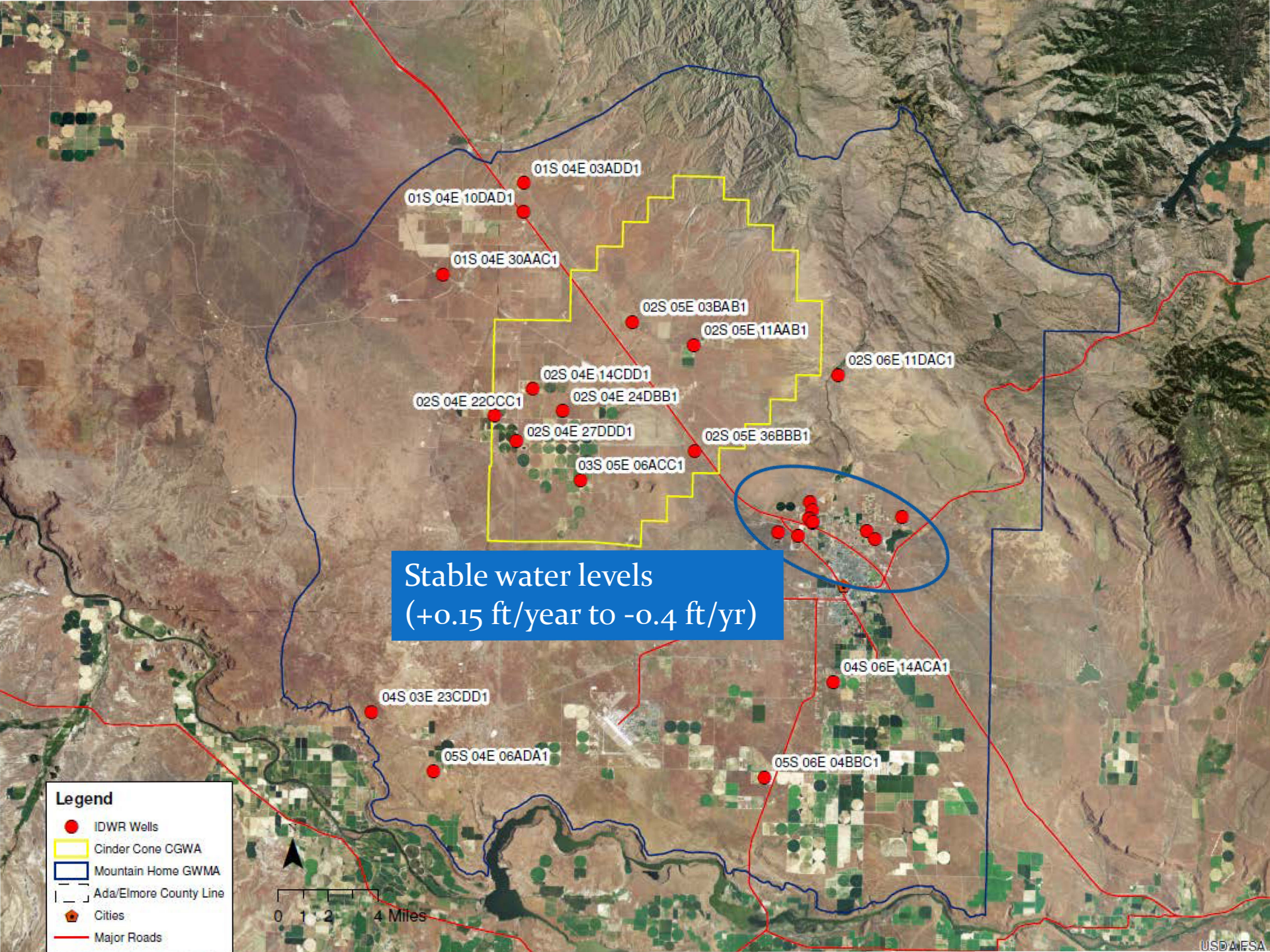
0 1 2 4 Miles

Declining water levels
(-3.7 ft/year to -0.4 ft/yr)



Legend

- IDWR Wells
- ▭ Cinder Cone CGWA
- ▭ Mountain Home GWMA
- ▭ Ada/Elmore County Line
- Cities
- Major Roads



Declining water levels
(-0.73 ft/year to -1.3 ft/yr)

Legend

- IDWR Wells
- Cinder Cone CGWA
- Mountain Home GWMA
- Ada/Elmore County Line
- Cities
- Major Roads

0 1 2 4 Miles

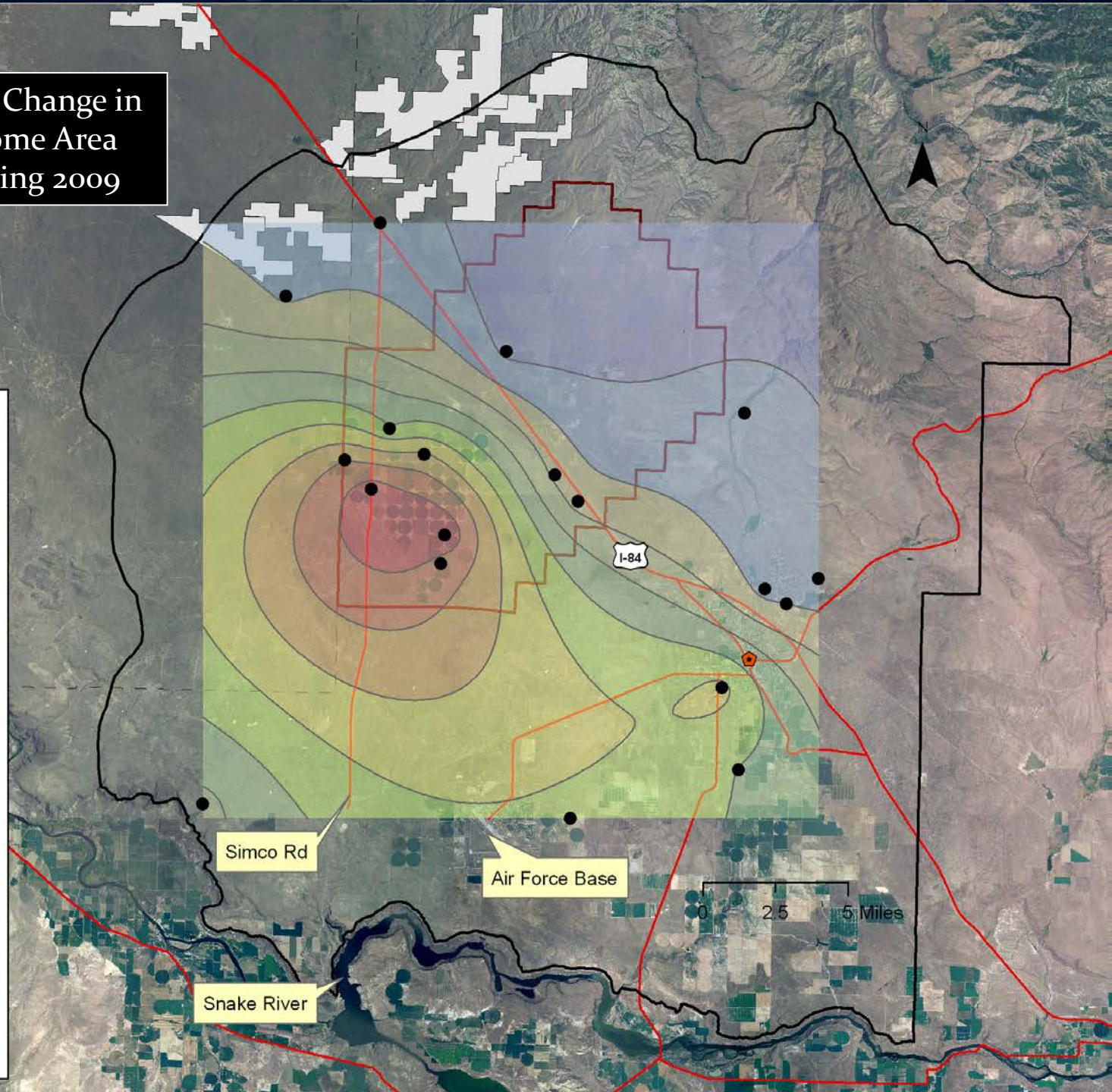
Groundwater Level Change in The Mountain Home Area Spring 1983 to Spring 2009

Legend

- Wells
- 🏠 Mountain Home
- Contour Interval (10 ft)
- Major Roads
- ▨ Proposed Development
- ▨ Ada/Elmore County Line
- ▨ Cinder Cone CGWA
- ▨ Mountain Home GWMA

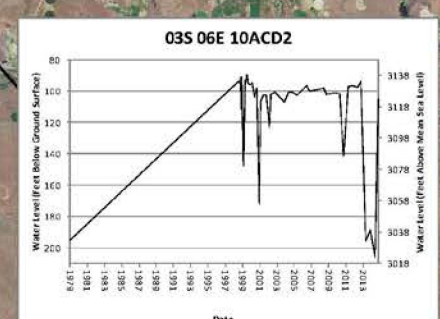
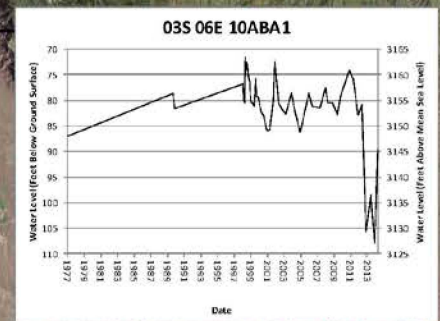
Water Level Change, in feet

- Declines 70 to 80
- Declines 60 to 70
- Declines 50 to 60
- Declines 40 to 50
- Declines 30 to 40
- Declines 20 to 30
- Declines 10 to 20
- Declines 0 to 10
- Rises 0 to 10
- Rises 10 to 20



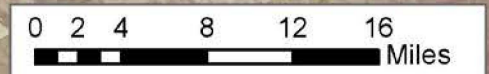
Mountain Home Ground Water Management Area

Ground Water Hydrographs



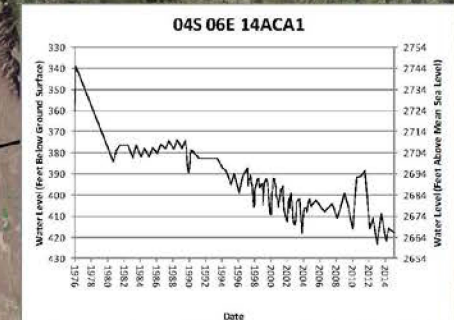
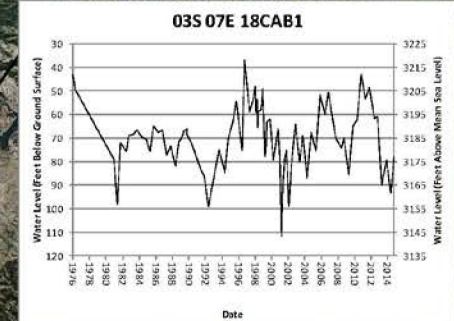
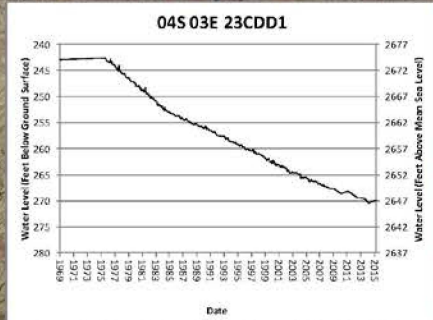
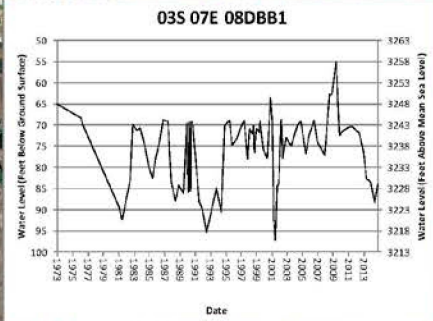
Legend

-  Mountain Home GWMA Monitoring Wells
-  Cinder Cone CGWA Shape
-  Mountain Home GWMA Boundary



Mountain Home Ground Water Management Area

Ground Water Hydrographs



Legend

-  Mountain Home GWMA Monitoring Wells
-  Cinder Cone CGWA Shape
-  Mountain Home GWMA Boundary

N



0 2 4 8 12 16 Miles

Water Districts

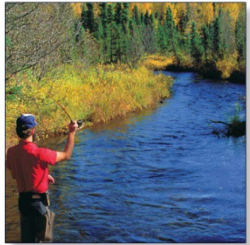
Chapter 6, Title 42, Idaho Code

Created by order of Director of IDWR for purposes of water right administration, specifically, distribution of water from public or natural water sources in accordance with water right priority dates.

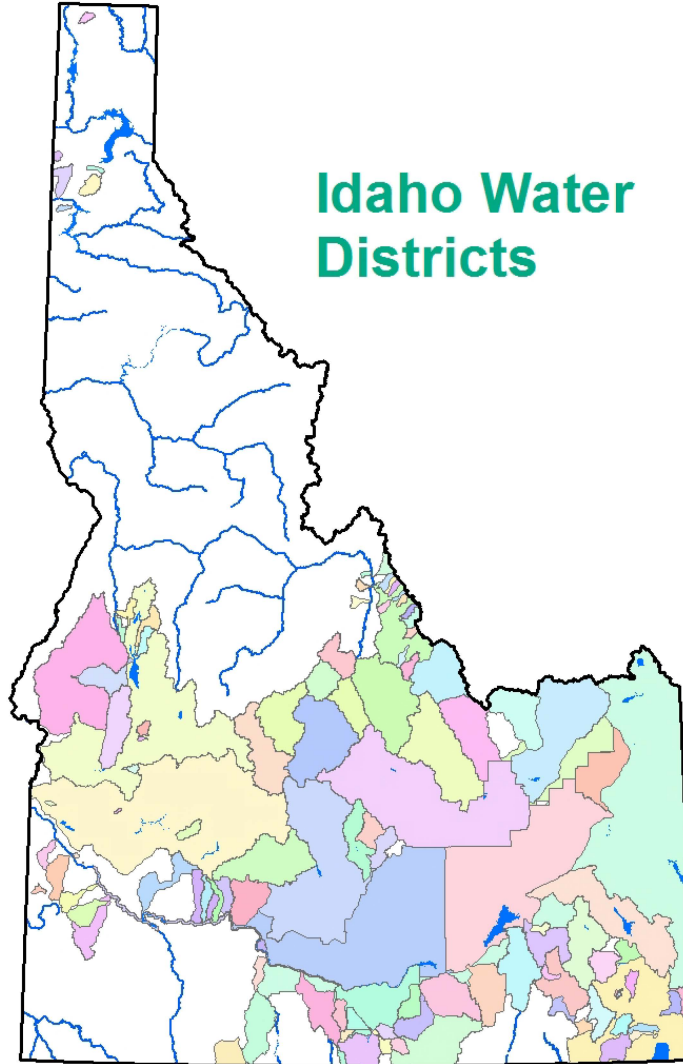
Water Districts

- Creation/Modification of Water Districts
 - “The director shall divide the state into water districts ... such that each public stream and tributaries, or independent source of water supply, shall constitute a water district.”
 - “The director may create, revise the boundaries of, or abolish a water district or combine two or more water districts by entry of an order . . . to properly administer uses of the water resource.”

Idaho Code § 42-604



Idaho Water Districts



Water Districts

Features

- Watermasters elected annually to provide water distribution services
 - elected by users, appointed by IDWR Director
 - compensated by users via assessments
 - receive guidance/direction from Director
- Advisory Committee elected annually
 - comprised of water users in district
 - serve in advisory capacity to watermaster and director, draft and implement resolutions, may mediate problems within district

Water Districts

- General Duties of Watermaster:
 - 1) deliver water in accordance with water right priority dates
 - authority to control/regulate diversion works
 - 2) measure and report diversions under water rights
 - 3) provide annual reports of expenses & water delivered (watermaster report, daily log books or distribution report, proposed budget)
 - 4) report and control unauthorized diversions
 - local resource/expert; review transfers

Water Districts

Meetings, Elections, Budgets

- Annual meeting held to elect watermaster, adopt a budget and resolutions, and select an advisory committee.
- Voting is by majority vote of users present, or if requested, by alternative method that involves votes equal to dollar amount assessed.

Idaho Code § 42-605

Water Districts

Meetings, Elections, Budgets

- Amount of water use is basis for assessments.
(IC § 42-612)
- Alternative methods and flexibility provided for voting and assessment of non-consumptive uses.
(IC § 42-605A)
- Budget collected either by county or by district.
(IC § 42-612 and 42-618)
- Participation is mandatory

District Creation

- District meeting is first Monday of March, by law, or
- Between first Monday of January & third Monday of March, by district resolution
- Director can schedule special meeting or first meeting at any time

District Creation

Who's included:

- All water rights are included , but for Administrative & Assessment purposes, IDWR typically excludes:
 - domestic/stock water uses meeting definition of Sec. 42-111, Idaho Code
 - in-stream livestock
 - minimum in-stream flow rights are exempt by law

Note: non-consumptive rights included but may be assessed differently

Measurement Requirements

Likely Scenario – Ground Water

- Order to require installation of measuring devices
 - After ground water rights are included in water district
 - Issue order with input from users and district advisory committee
 - May phase in over one to two years
 - Standard meters required; variances limited

Measurement Requirements:

- For Ground Water Measurement, typically exclude:
 - domestic/stock water uses, in-stream livestock & other small rights/uses ≤ 0.24 cfs diversion rate
 - may exclude small irrigation uses, typically ≤ 5 acres
- All other rights/diversions subject to measurement

Measurement Requirements

- Ground water diversions:
 - Mag Meters: \approx \$2,000 - \$3,400 for 10" diam. + install
 - Meters should be read several times per year

IDAHO

Department of
Water Resources



A-Z Index

Water Rights

Wells

Streams, Dams &
Flooding

Forms

Water Data

Maps & Spatial Data

Legal Actions

About IDWR

← Water Data

Water Measurement

Guidelines and procedures for collecting water measurement data and reporting the information to the Idaho Department of Water Resources have been developed in order to have an orderly and uniform measuring and reporting program within the State of Idaho.

The information below assists in measuring and reporting diversions pursuant to various water measurement orders issued by IDWR. The following links and guidelines are also applicable and useful for water measurement requirements within water districts.

Measurement Guidelines

-  [Minimum Acceptable Standards for Open Channel and Closed Conduit Measuring Devices](#)
-  [List of Approved Closed Conduit Flow Meters](#)
-  [IDWR Water Measurement and Reporting Guidelines](#)

[top]

Forms:

- » [Annual Report & Measurement Forms](#)


Related Information

- » [Idaho Water Districts](#)
- » [Eastern Snake Plain A](#)

Statutes:

- » [42-701 - General statute for water measurement in Idaho.](#)

Water Conversion

-  [Water Conversion](#)

1 Miner's Inch =

District Creation

Budget Considerations:

- GW rights in new district:
 - Budget for compensation of watermaster and secretary/treasurer for meter compliance, meter reading and reporting, mileage, FICA/taxes, workers comp, equipment, assessments, budget reports. other regulatory issues
 - Consider budgets from other districts?

Creation Timeline

Next Steps – Hearing & Order

- Conclude today's hearing
- Ten day comment period following hearing
 - (January 22nd)
- Issue order in February, 2016?

Annual Meeting

- Adopt Budget
- Elect watermaster
- Select advisory committee
- Adopt operational resolutions

Other Goals - 2016

- Work with Advisory Committee to develop plan for measuring device order
 - Consider thresh-holds, timeframes etc.

Questions and Discussion?

