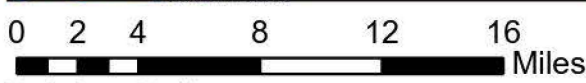
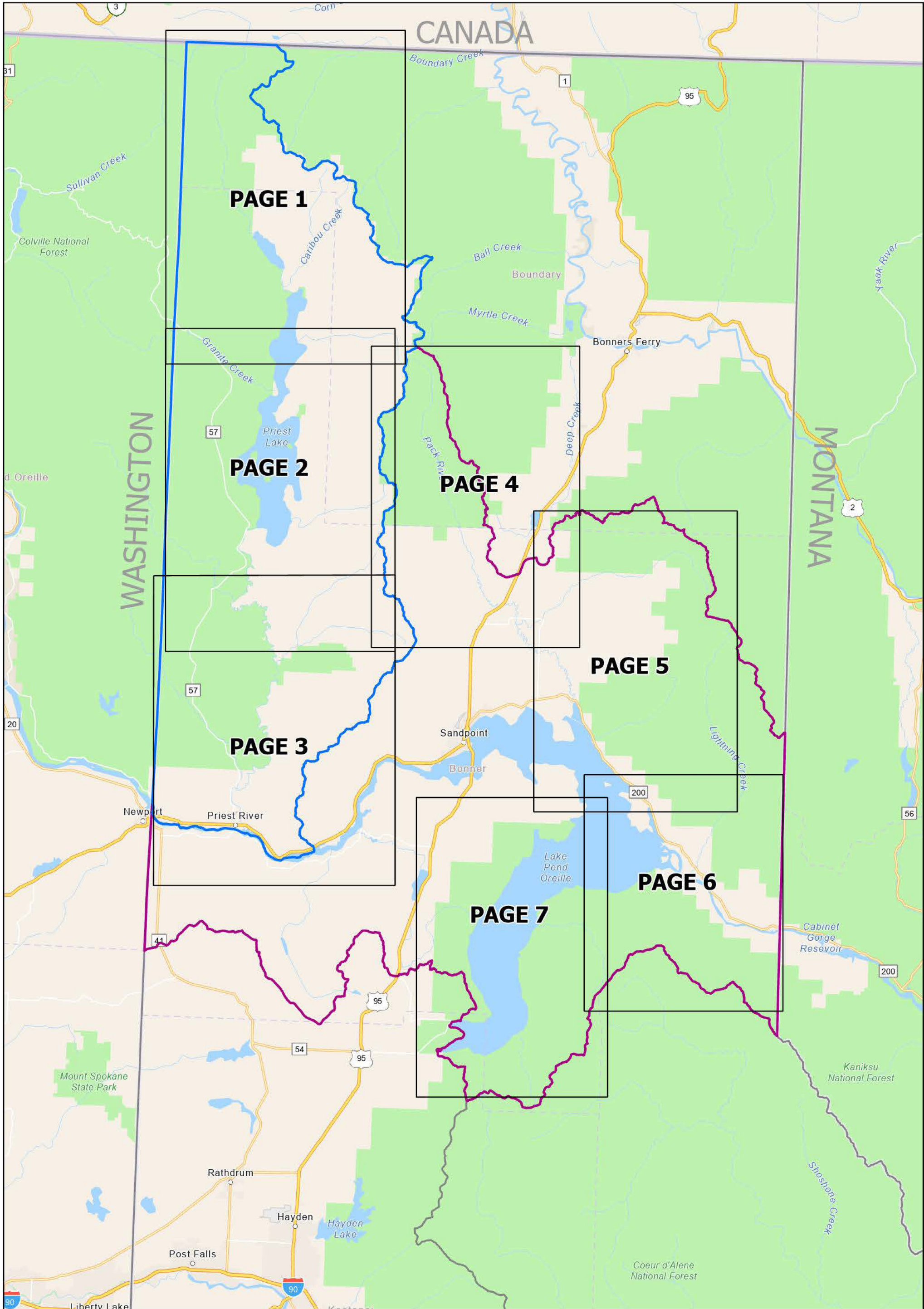


# CFPRBA Federal Reserved Active Claims Place of Use



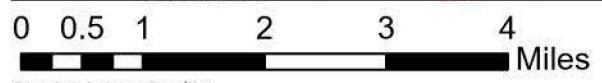
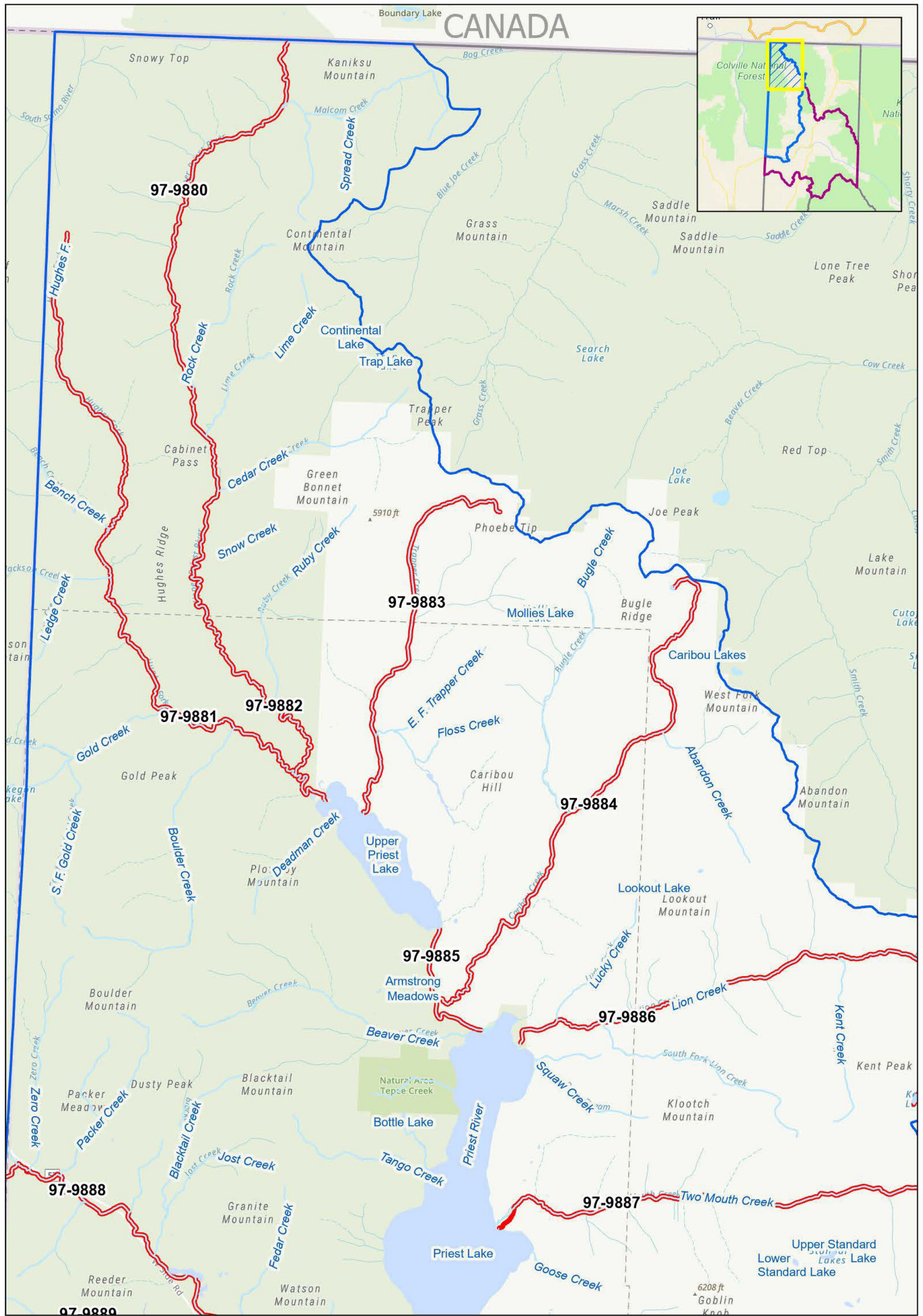
Service Layer Credits:  
 Esri, TomTom, Garmin, SafeGraph, FAO, METI/NASA, USGS,  
 Bureau of Land Management, EPA, NPS, USFWS

**TO OPEN CLAIM DOCUMENTS,  
 HOVER OVER CLAIM NUMBER AND  
 LEFT CLICK**

## CFPRBA Federal Reserved Claims

- ▭ IDWR Administrative Basin 97
- ▭ IDWR Administrative Basin 96
- IDWR Administrative Basins



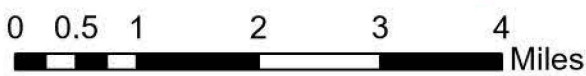
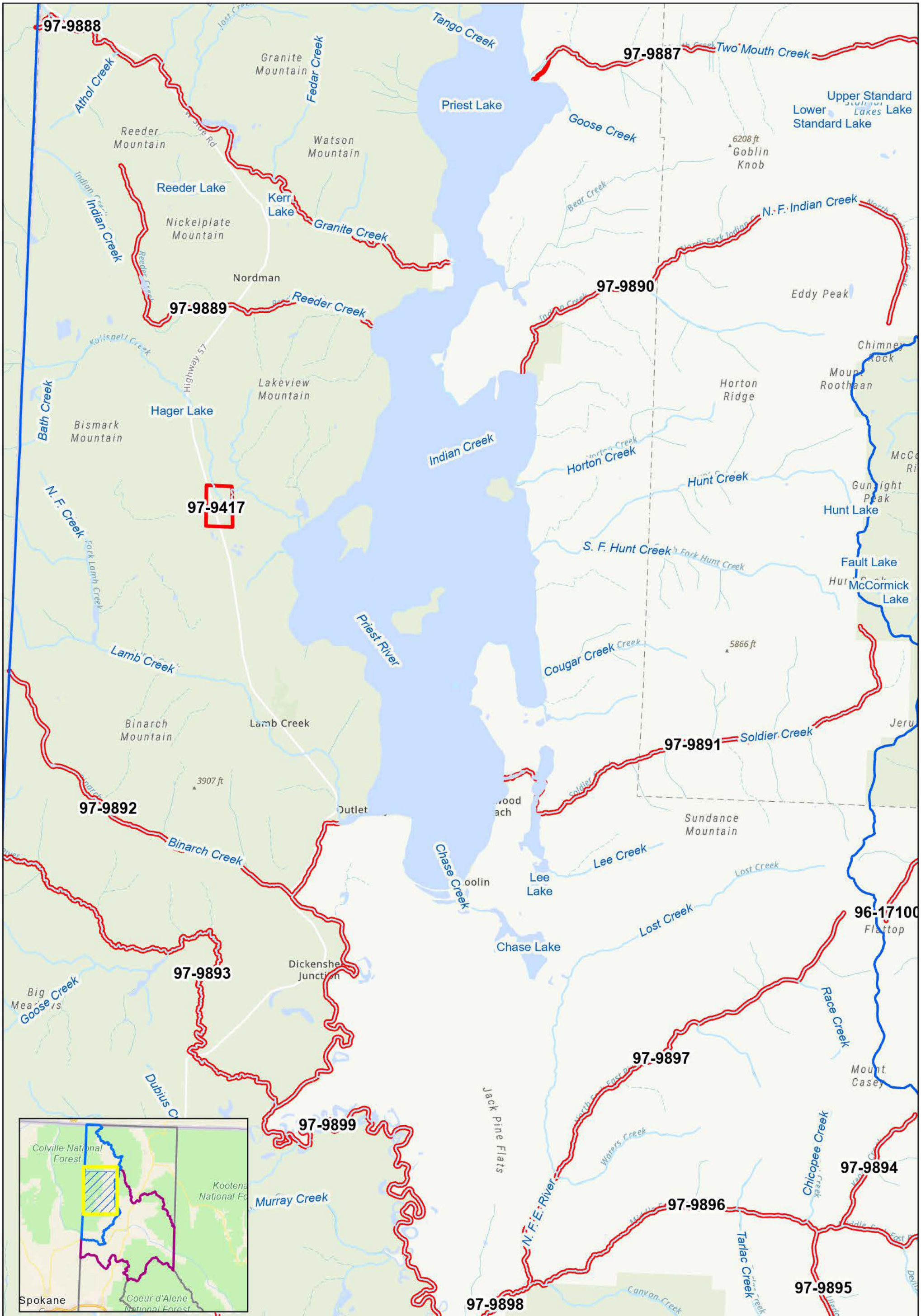


Service Layer Credits:  
 Esri, TomTom, Garmin, SafeGraph, GeoTechnologies, Inc, METI/  
 NASA, USGS, Bureau of Land Management, EPA, NPS, USDA,  
 USFWS, Esri, TomTom, Garmin, FAO, NOAA, USGS, Bureau of  
 Land Management, EPA, NPS, USFWS

### CFPRBA Federal Reserved Claims

- ▭ IDWR Administrative Basin 97
- ▭ IDWR Administrative Basin 96
- IDWR Administrative Basins
- ▭ Major Lakes and Ponds
- ▬ Major Rivers and Streams
- Active Claim Place of Use





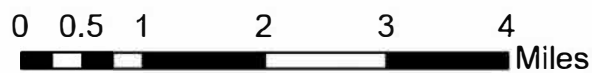
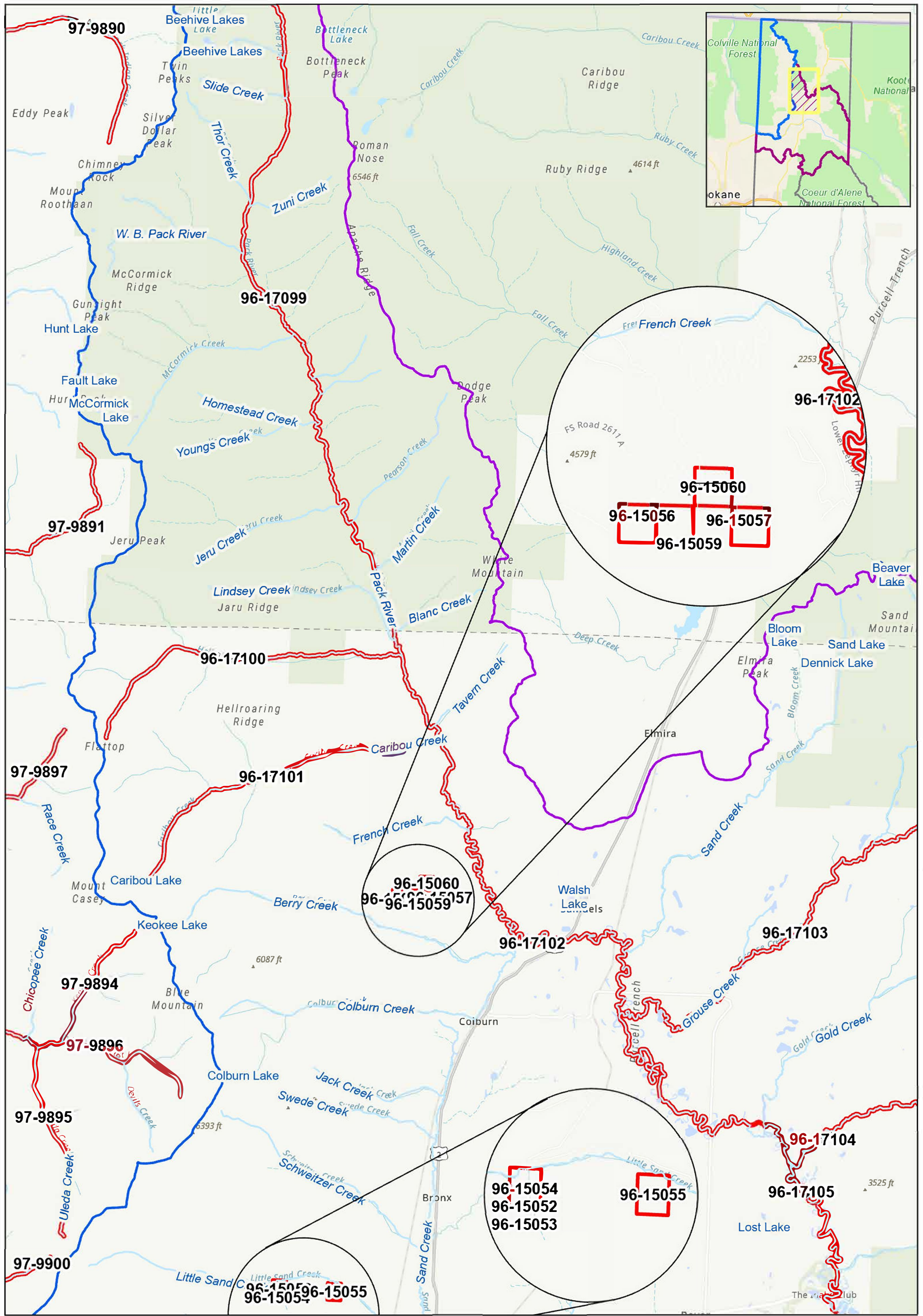
Service Layer Credits:  
 Esri, TomTom, Garmin, SafeGraph, GeoTechnologies, Inc, METI/  
 NASA, USGS, Bureau of Land Management, EPA, NPS, USDA,  
 USFWS, Esri, TomTom, Garmin, FAO, NOAA, USGS, Bureau of  
 Land Management, EPA, NPS, USFWS

### CFPRBA Federal Reserved Claims

- █ IDWR Administrative Basin 97
- █ IDWR Administrative Basin 96
- IDWR Administrative Basins
- █ Major Lakes and Ponds
- █ Major Rivers and Streams
- Active Claim Place of Use





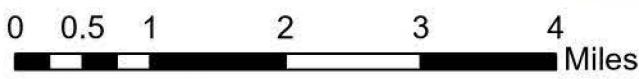
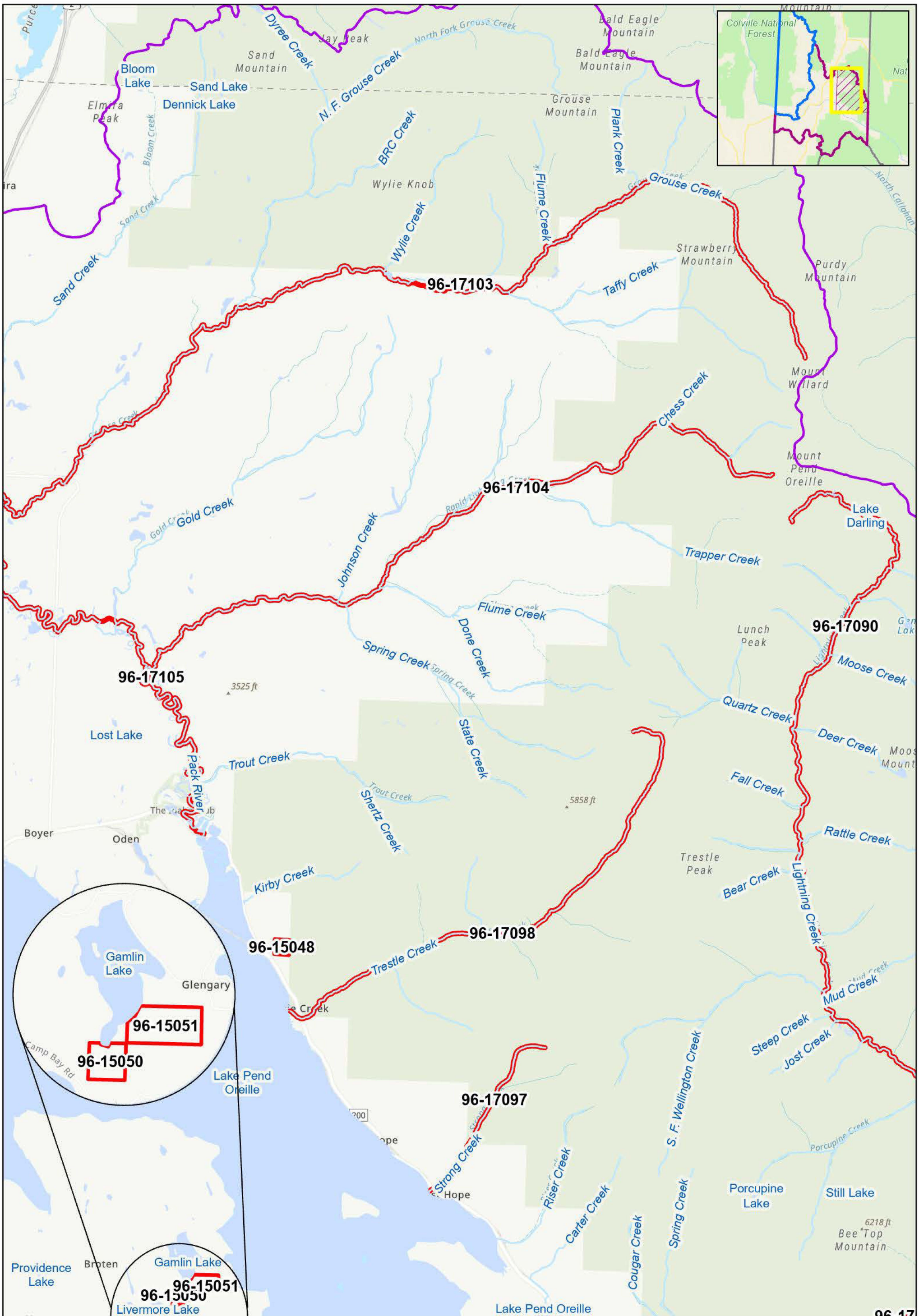


Service Layer Credits:  
 Esri, TomTom, Garmin, SafeGraph, GeoTechnologies, Inc, METI/NASA,  
 USGS, Bureau of Land Management, EPA, NPS, USDA, USFWS, Esri,  
 TomTom, Garmin, FAO, NOAA, USGS, Bureau of Land Management, EPA,  
 NPS, USFWS, Esri, TomTom, Garmin, SafeGraph, GeoTechnologies, Inc,  
 METI/NASA, USGS, Bureau of Land Management, EPA, NPS, US Census  
 Bureau, USDA, USFWS

### CFPRBA Federal Reserved Claims

- ▭ IDWR Administrative Basin 97
- ▭ IDWR Administrative Basin 96
- IDWR Administrative Basins
- ▭ Major Lakes and Ponds
- ▬ Major Rivers and Streams
- Active Claim Place of Use

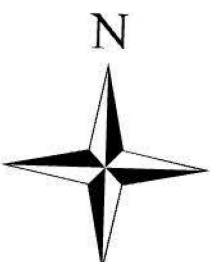


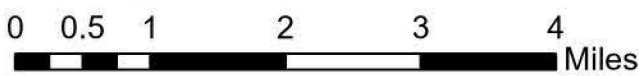
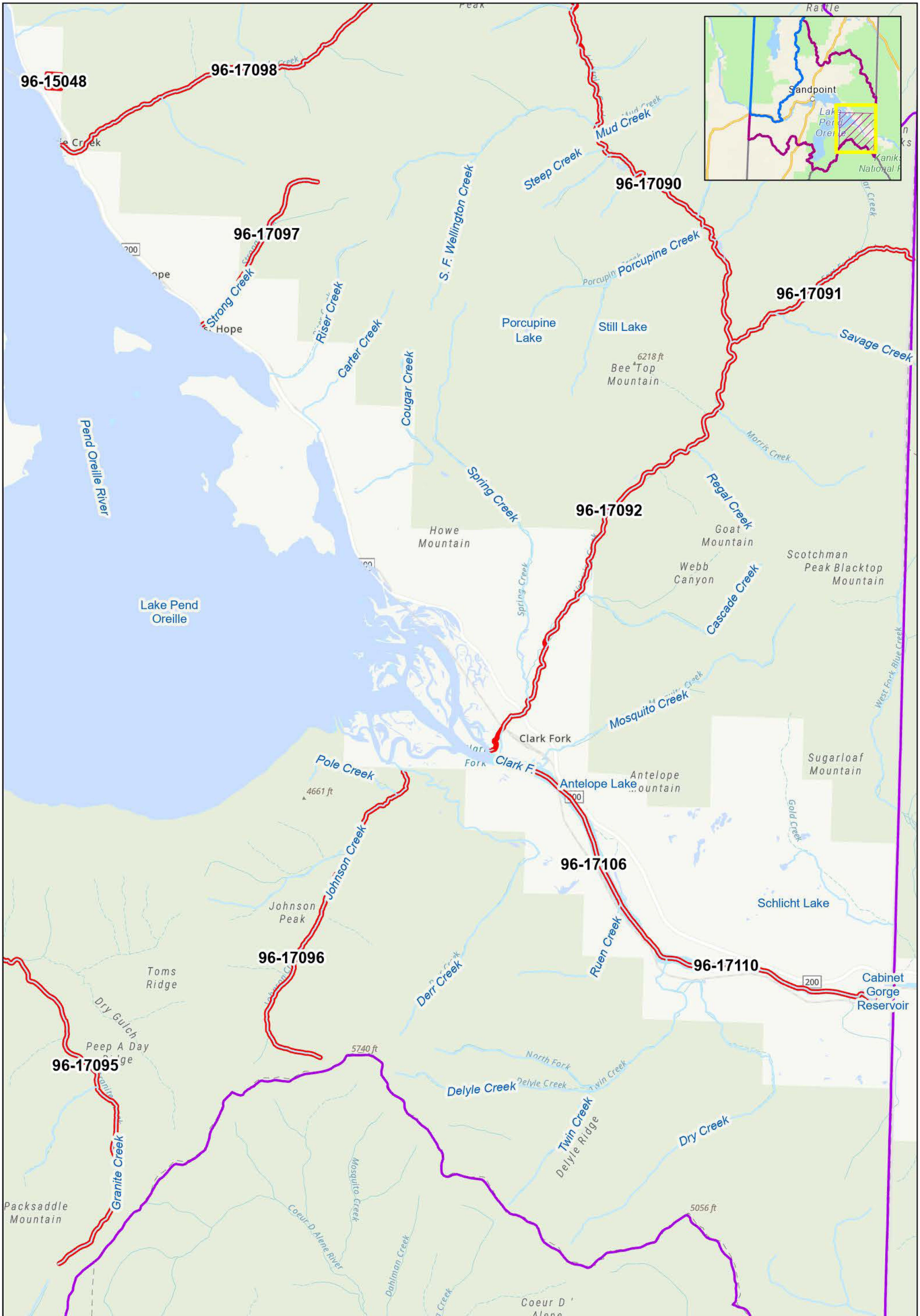


Service Layer Credits:  
 Esri, TomTom, Garmin, SafeGraph, GeoTechnologies, Inc, METI/  
 NASA, USGS, Bureau of Land Management, EPA, NPS, USDA,  
 USFWS, Esri, TomTom, Garmin, FAO, NOAA, USGS, Bureau of  
 Land Management, EPA, NPS, USFWS

### CFPRBA Federal Reserved Claims

- ▭ IDWR Administrative Basin 97
- ▭ IDWR Administrative Basin 96
- IDWR Administrative Basins
- Major Lakes and Ponds
- Major Rivers and Streams
- Active Claim Place of Use



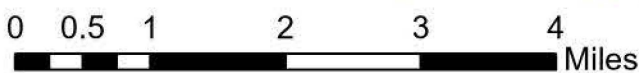
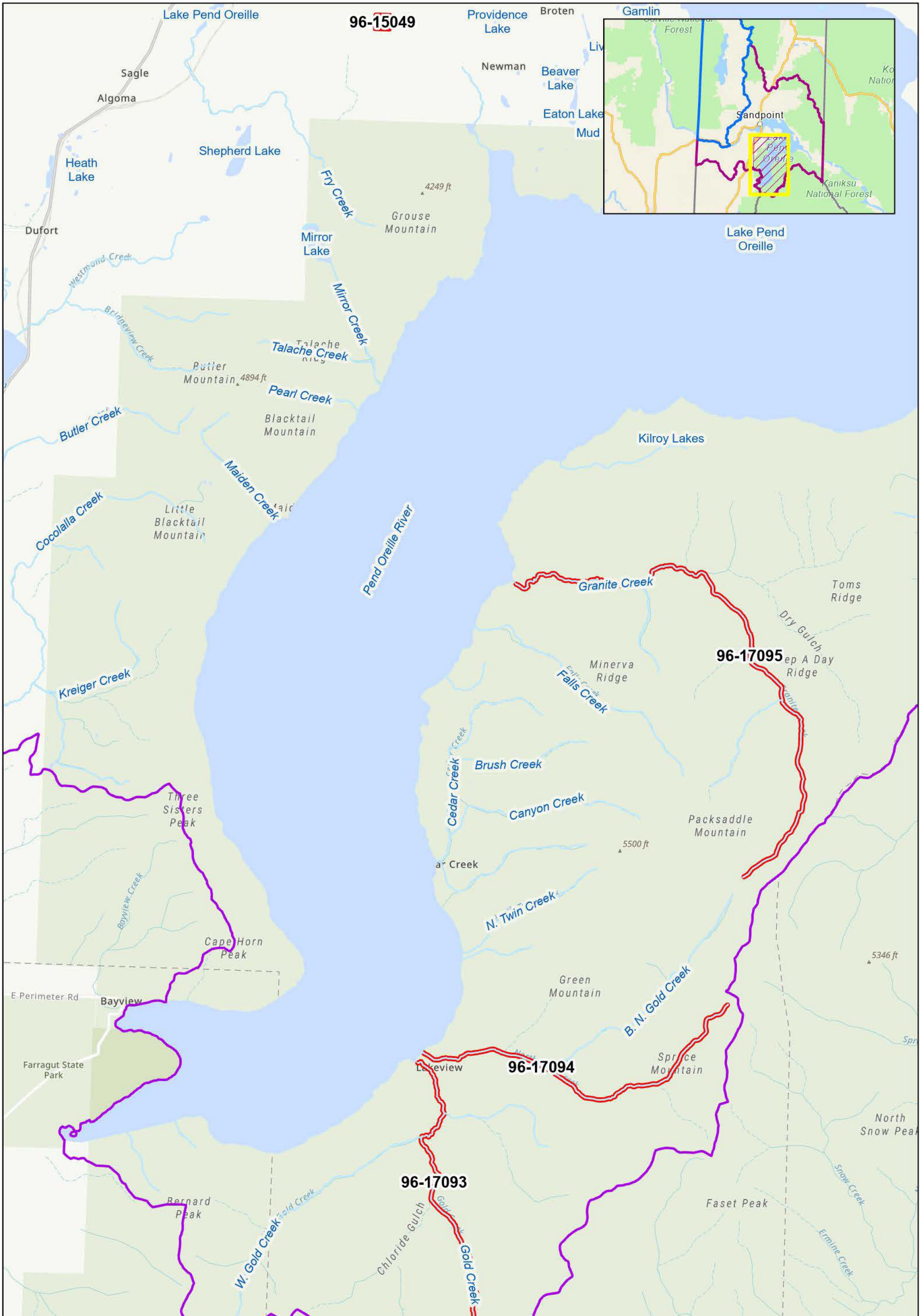


Service Layer Credits:  
 Esri, TomTom, Garmin, SafeGraph, GeoTechnologies, Inc, METI/  
 NASA, USGS, Bureau of Land Management, EPA, NPS, USDA,  
 USFWS, Esri, TomTom, Garmin, FAO, NOAA, USGS, Bureau of  
 Land Management, EPA, NPS, USFWS

### CFPRBA Federal Reserved Claims

- ▭ IDWR Administrative Basin 97
- ▭ IDWR Administrative Basin 96
- IDWR Administrative Basins
- ▭ Major Lakes and Ponds
- Major Rivers and Streams
- Active Claim Place of Use





Service Layer Credits:  
 Esri, TomTom, Garmin, SafeGraph, GeoTechnologies, Inc, METI/  
 NASA, USGS, Bureau of Land Management, EPA, NPS, USDA,  
 USFWS, Esri, TomTom, Garmin, FAO, NOAA, USGS, Bureau of  
 Land Management, EPA, NPS, USFWS

### CFPRBA Federal Reserved Claims

- ▭ IDWR Administrative Basin 97
- ▭ IDWR Administrative Basin 96
- ▭ IDWR Administrative Basins
- ▭ Major Lakes and Ponds
- Major Rivers and Streams
- ▭ Active Claim Place of Use

