

WeSPAM Updates

Presented by Megan Clark, P.G.
Modeling Technical Advisory
Committee Meeting
June 3, 2026



IDAHO DEPARTMENT OF
WATER RESOURCES



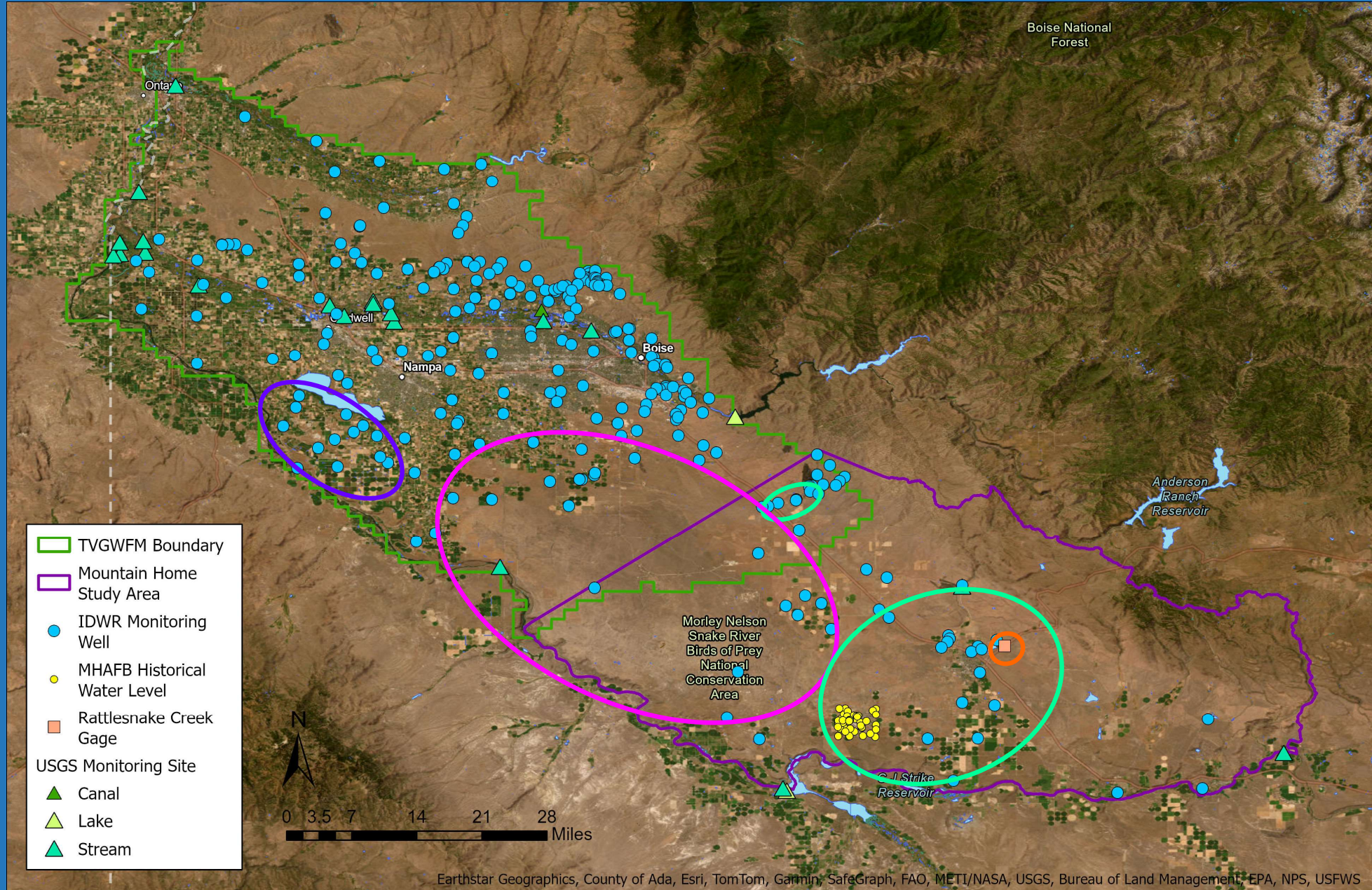
Additional data obtained, collected, and planned for collection

Stream gage on
Rattlesnake
Creek

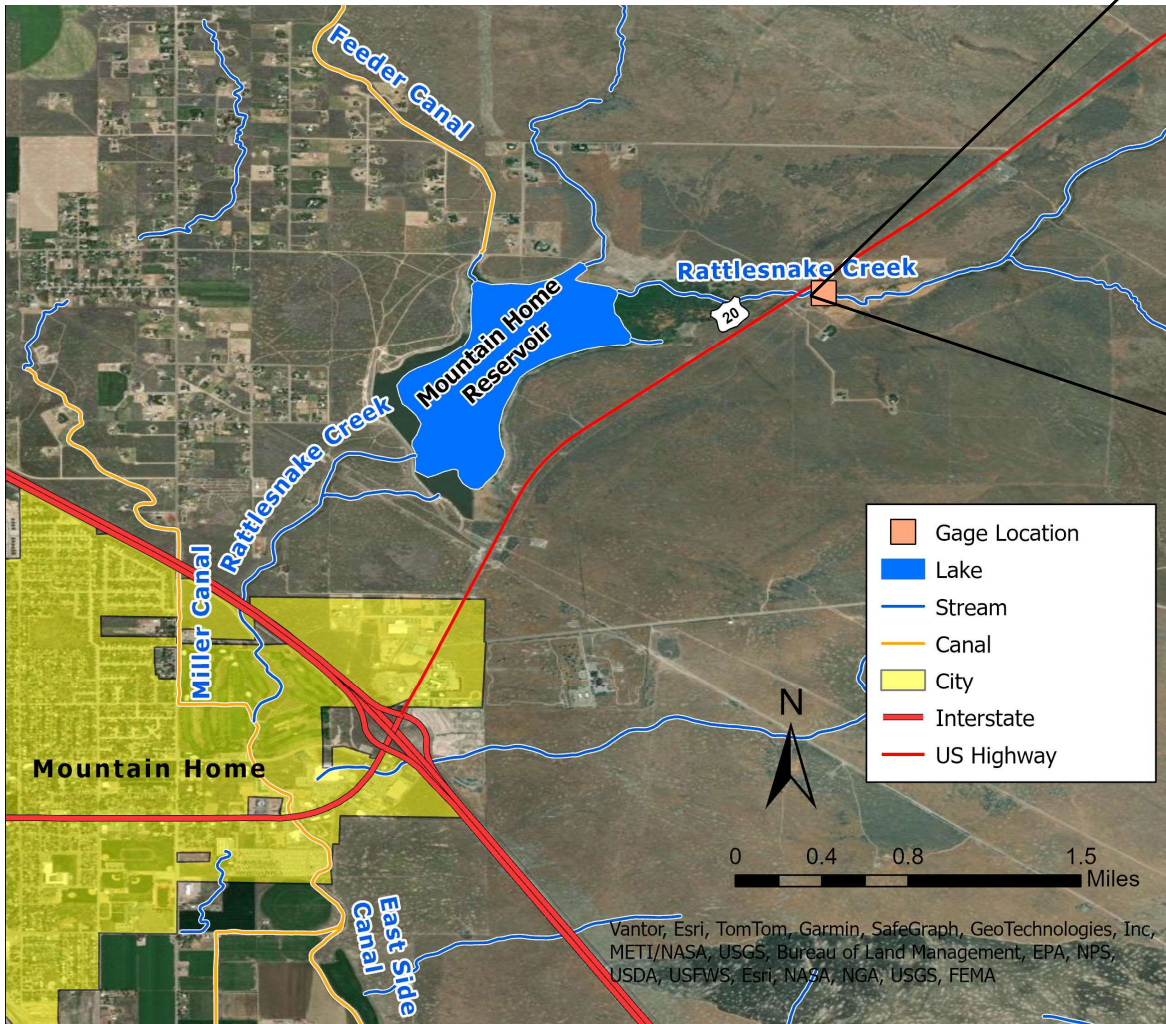
Mayfield and
Mountain Home
PWS Pump Test
Data

Monitoring wells
south of Lake
Lowell

Monitoring wells
between Boise and
Mountain Home



Rattlesnake Creek Gage



- Installed in March 2026
- Data will be available this summer (<https://research.idwr.idaho.gov/apps/hydrologic/aquainfo/Home/Data#!/>)
- Data are provisional until a rating curve can be developed (~1 year)



Questions?