

Swan Falls AADF Update

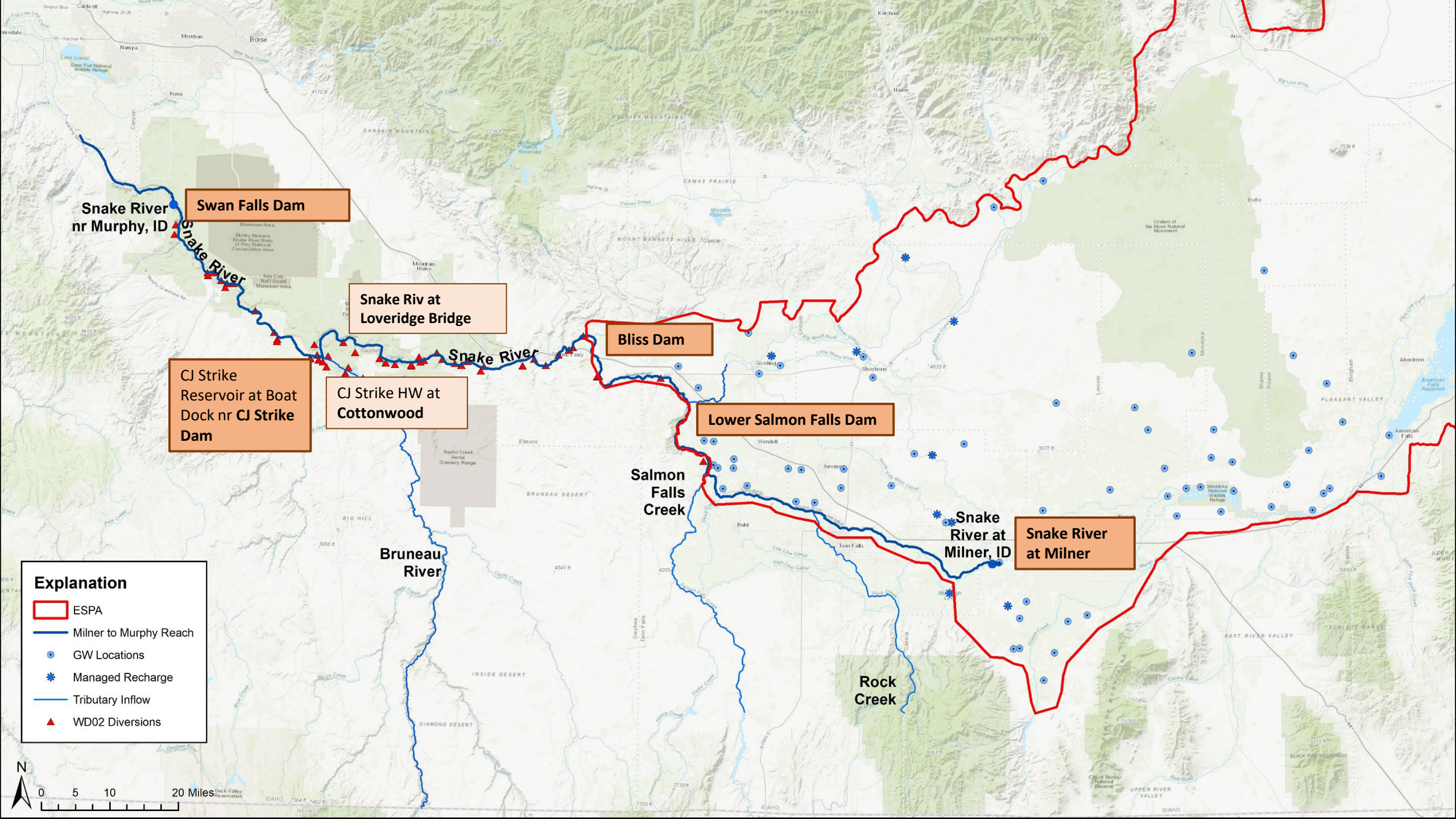
Presented by Hannah Adams

May 26th, 2026



Swan Falls AADF Calculation

- “Adjusted average daily flow” is the average daily flow at the Murphy Gaging Station that has been adjusted to account for Idaho Power operations. This is further averaged over a 3-day period.
- This calculation is done through the reservoir-stage method, utilizing 7 inputs to determine daily storage change along the Milner to Murphy reach.
- This calculation is run weekly.



Snake River nr Murphy, ID
Swan Falls Dam

Snake Riv at Loveridge Bridge

Bliss Dam

CJ Strike Reservoir at Boat Dock nr CJ Strike Dam

CJ Strike HW at Cottonwood

Lower Salmon Falls Dam

Salmon Falls Creek

Snake River at Milner, ID

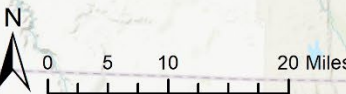
Snake River at Milner

Rock Creek

Bruneau River

Explanation

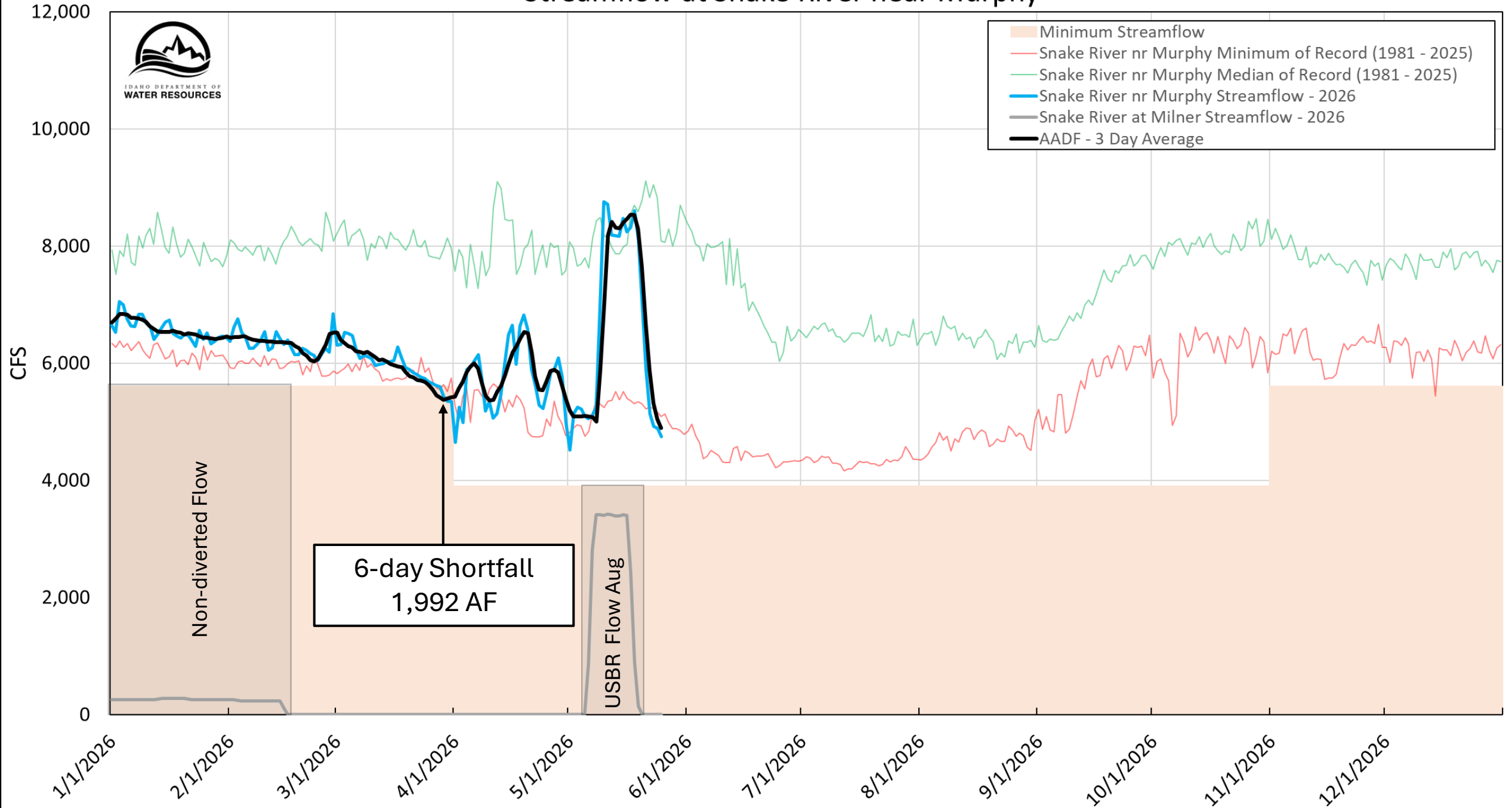
- ▭ ESPA
- Milner to Murphy Reach
- GW Locations
- ★ Managed Recharge
- Tributary Inflow
- ▲ WD02 Diversions



Streamflow at Snake River near Murphy



- Minimum Streamflow
- Snake River nr Murphy Minimum of Record (1981 - 2025)
- Snake River nr Murphy Median of Record (1981 - 2025)
- Snake River nr Murphy Streamflow - 2026
- Snake River at Milner Streamflow - 2026
- AADF - 3 Day Average

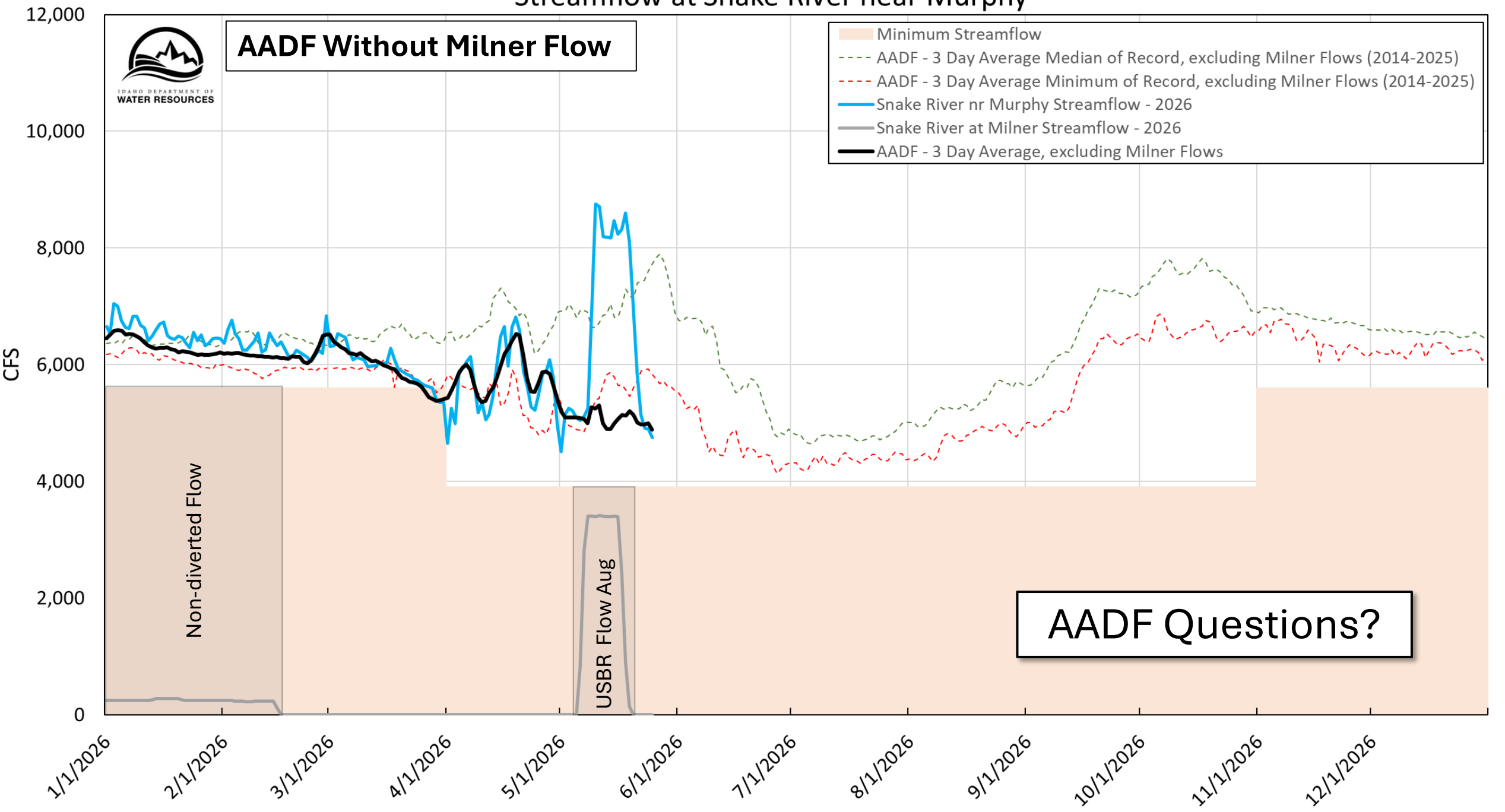


Streamflow at Snake River near Murphy



AADF Without Milner Flow

- Minimum Streamflow
- AADF - 3 Day Average Median of Record, excluding Milner Flows (2014-2025)
- AADF - 3 Day Average Minimum of Record, excluding Milner Flows (2014-2025)
- Snake River nr Murphy Streamflow - 2026
- Snake River at Milner Streamflow - 2026
- AADF - 3 Day Average, excluding Milner Flows



Non-diverted Flow

USBR Flow Aug

AADF Questions?

1/1/2026 2/1/2026 3/1/2026 4/1/2026 5/1/2026 6/1/2026 7/1/2026 8/1/2026 9/1/2026 10/1/2026 11/1/2026 12/1/2026

12,000
10,000
8,000
6,000
4,000
2,000
0

CFS

Swan Falls Forecast Tool

Presented by Hannah Adams

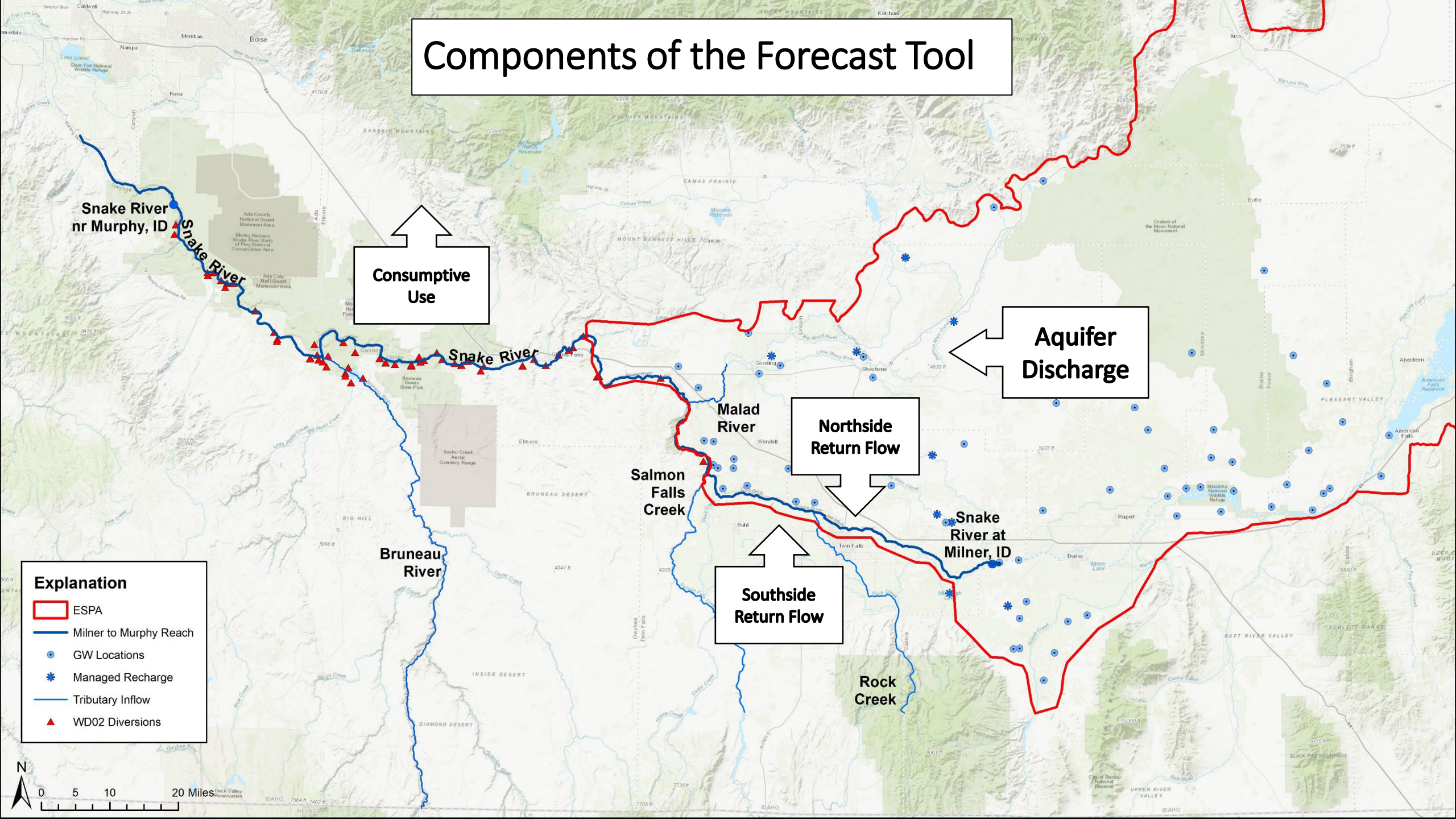
May 26th, 2026



Swan Falls Forecast Tool

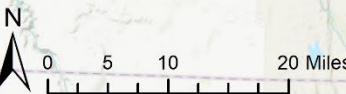
- Spreadsheet-based tool developed by CH2M Hill (Jacobs Engineering) in cooperation with IDWR and stakeholders.
- Tool is used to forecast the reach gain for the Milner to Murphy reach during the low flow period in the summer.
 - June through August.
 - ESPA discharge is the main contributor to the reach during this time of year.
- Winter and Spring forecasts – run twice a year.

Components of the Forecast Tool

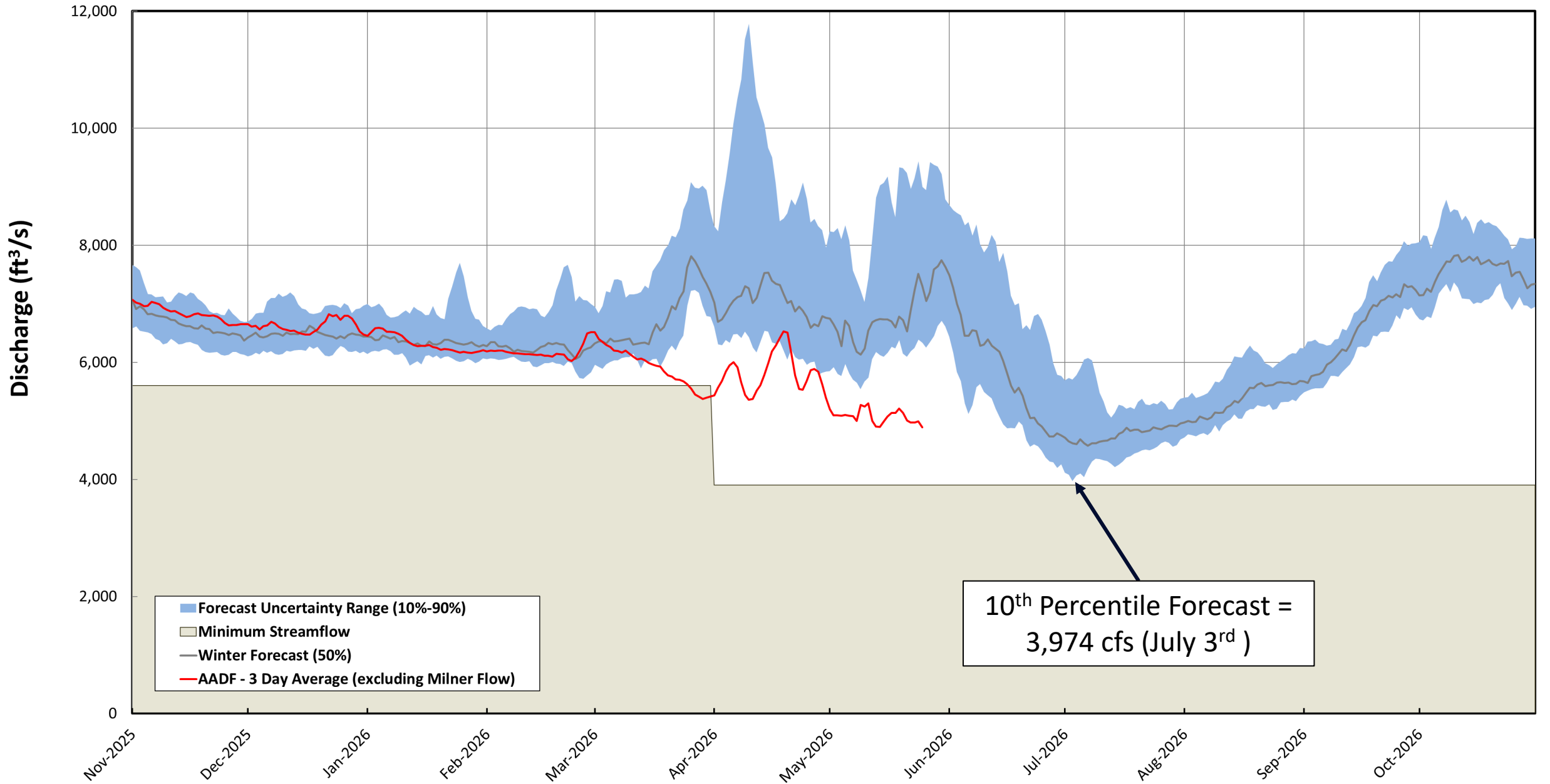


Explanation

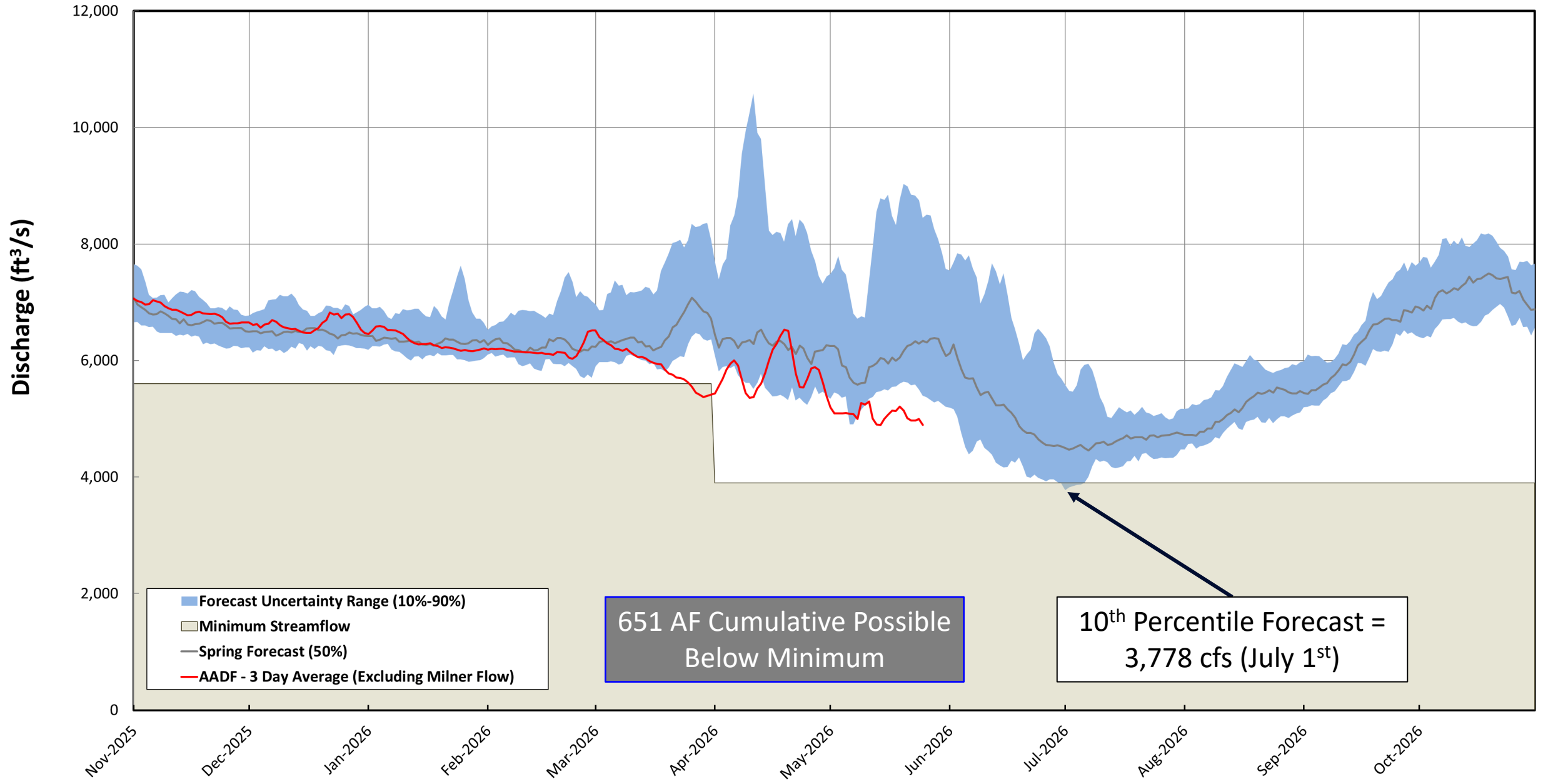
- ESPA
- Milner to Murphy Reach
- GW Locations
- Managed Recharge
- Tributary Inflow
- WD02 Diversions



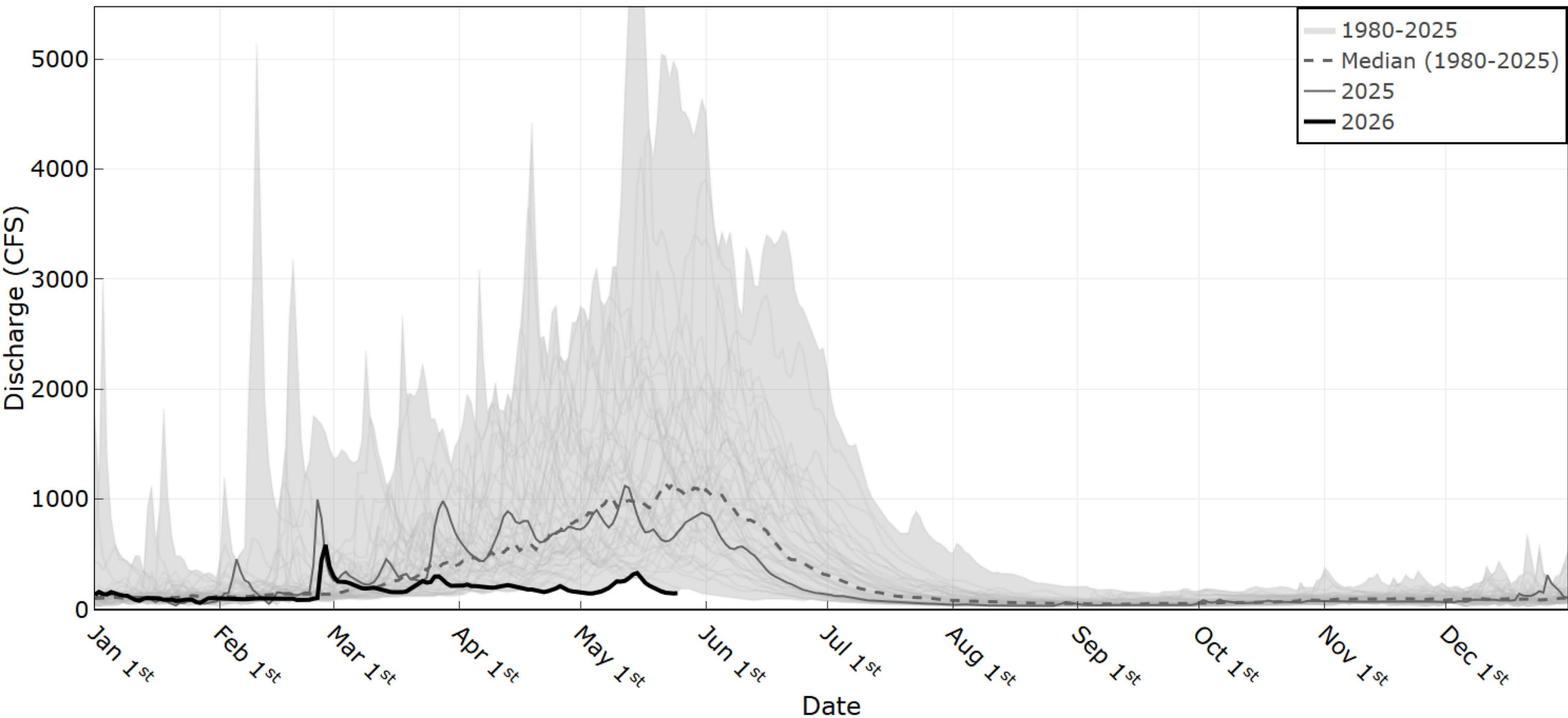
2026 Winter Forecast



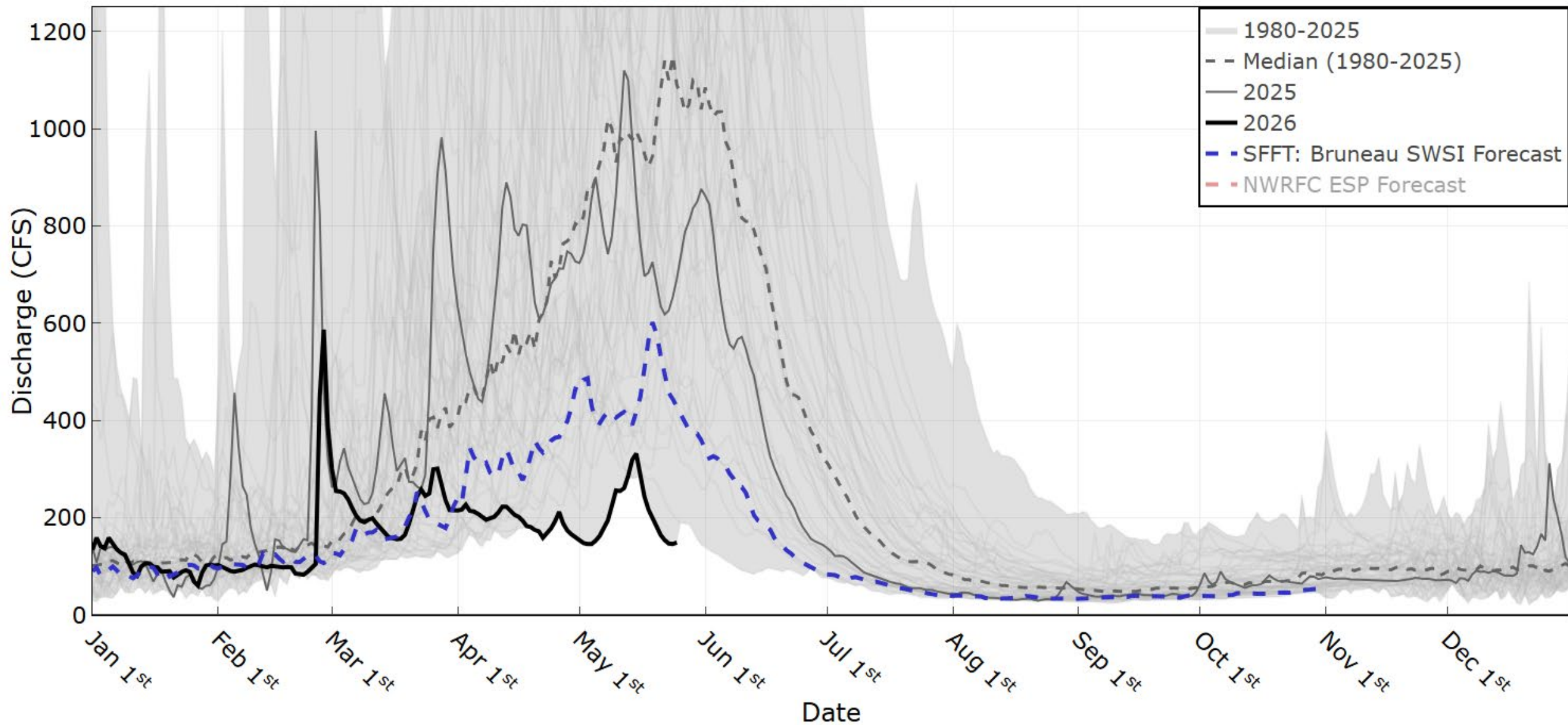
2026 Spring Forecast



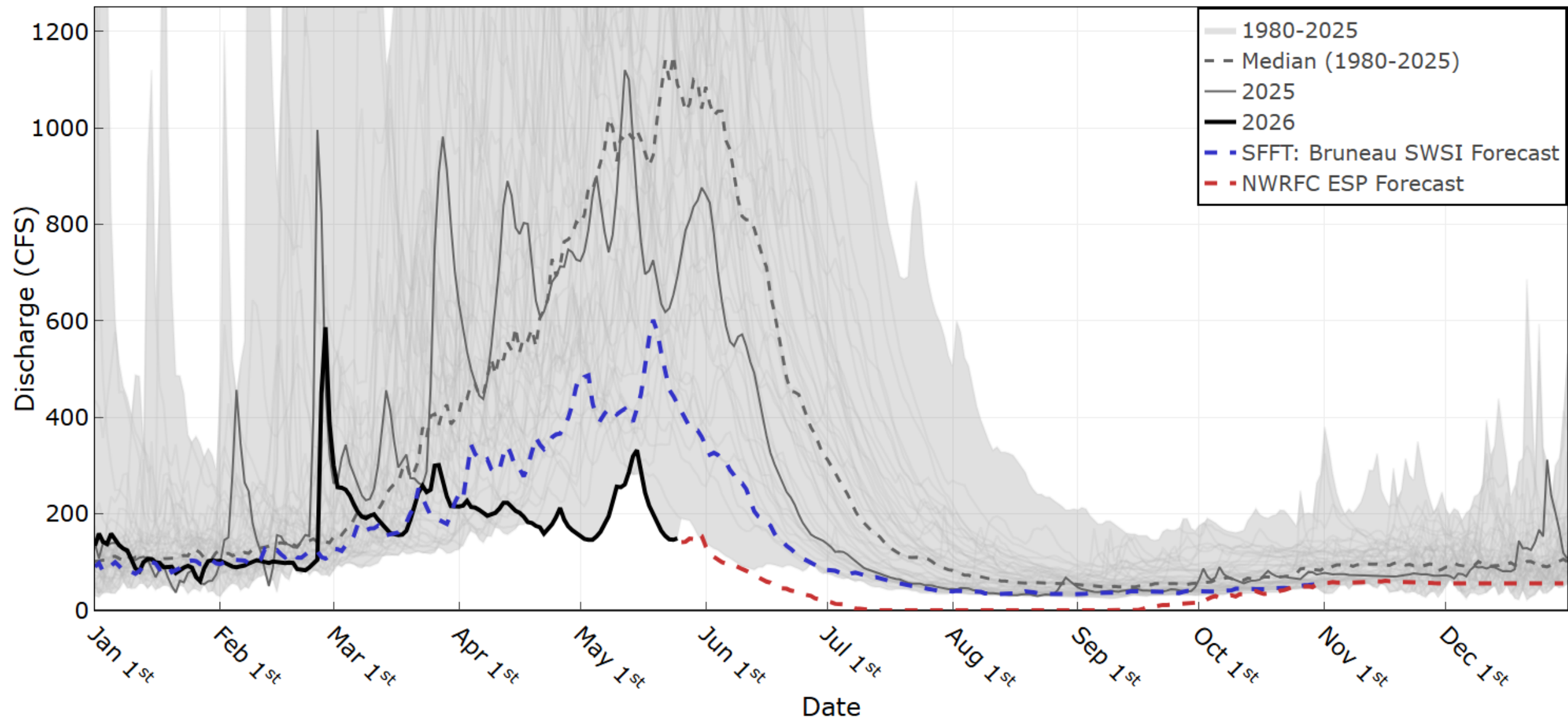
Bruneau River nr Hot Springs



Bruneau River nr Hot Springs

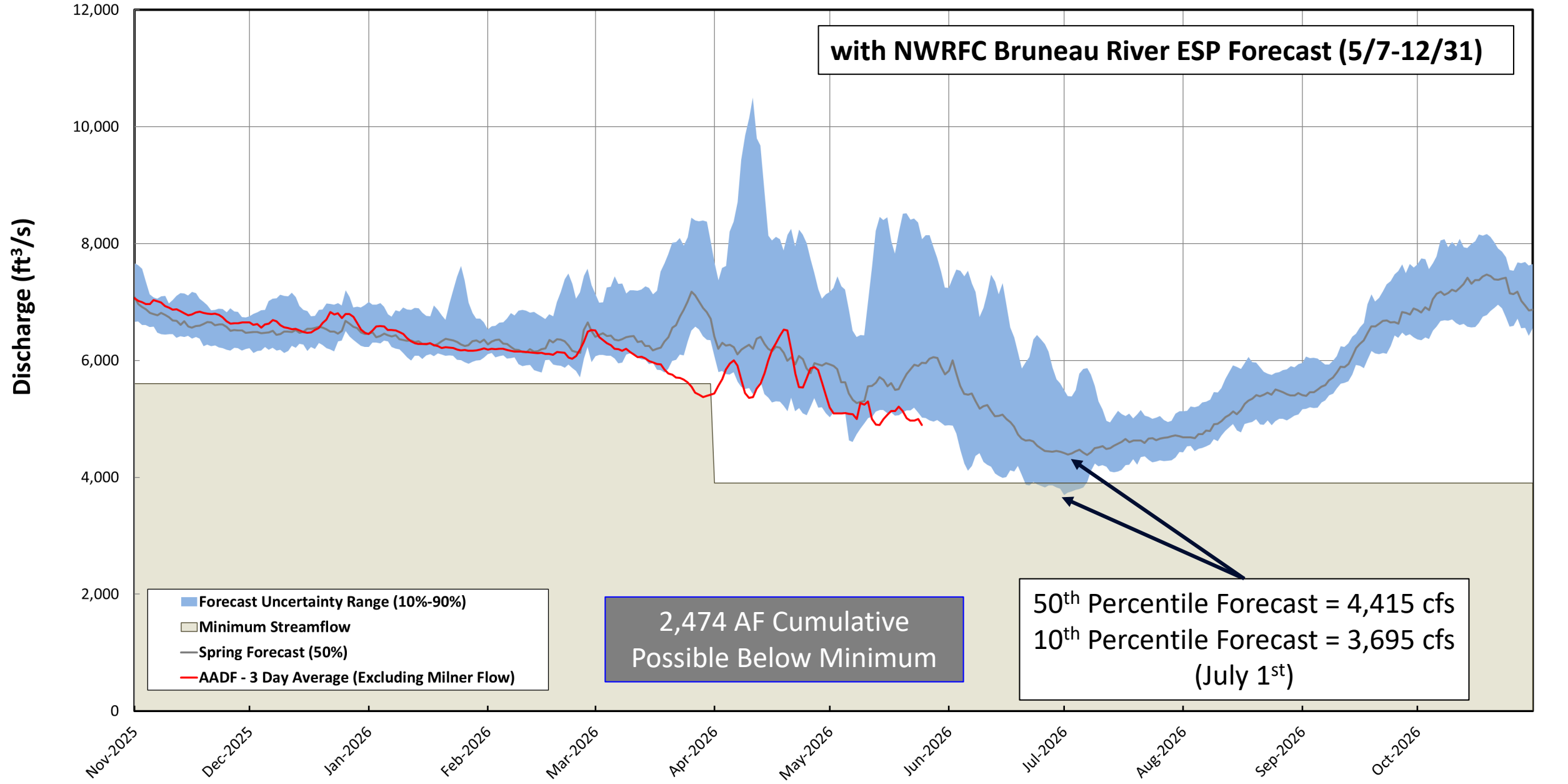


Bruneau River nr Hot Springs



2026 Spring Forecast

with NWRFC Bruneau River ESP Forecast (5/7-12/31)

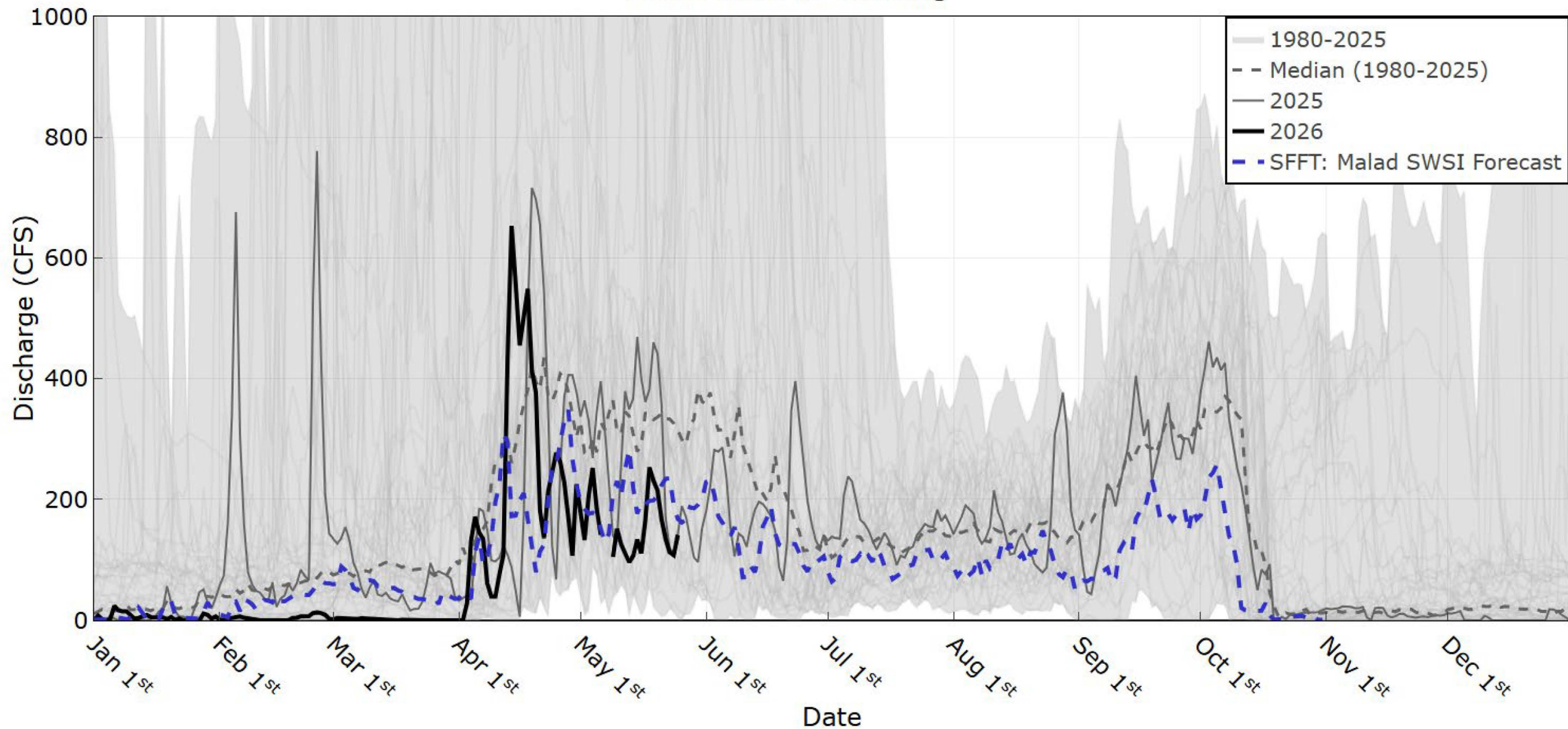


Forecast Uncertainty Range (10%-90%)
Minimum Streamflow
Spring Forecast (50%)
AADF - 3 Day Average (Excluding Milner Flow)

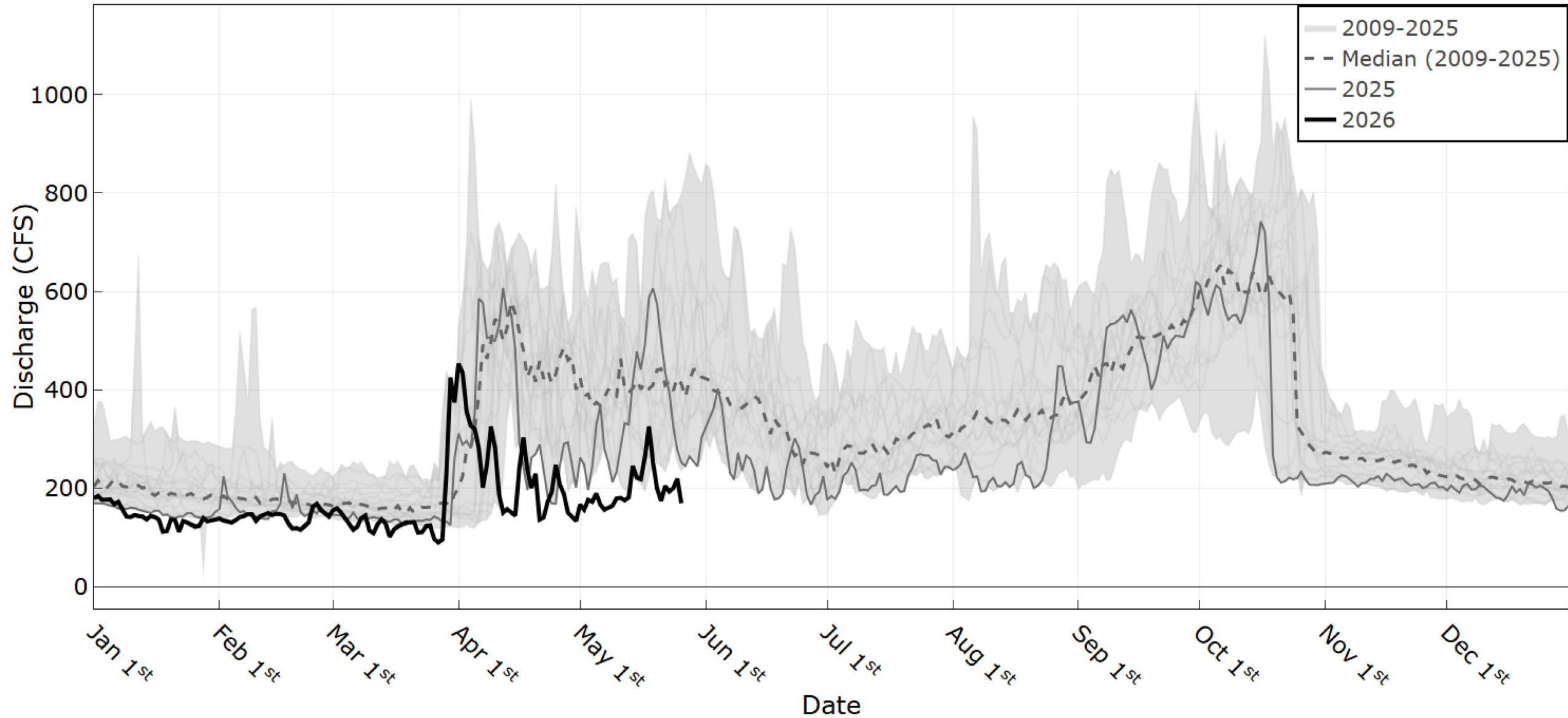
2,474 AF Cumulative
Possible Below Minimum

50th Percentile Forecast = 4,415 cfs
10th Percentile Forecast = 3,695 cfs
(July 1st)

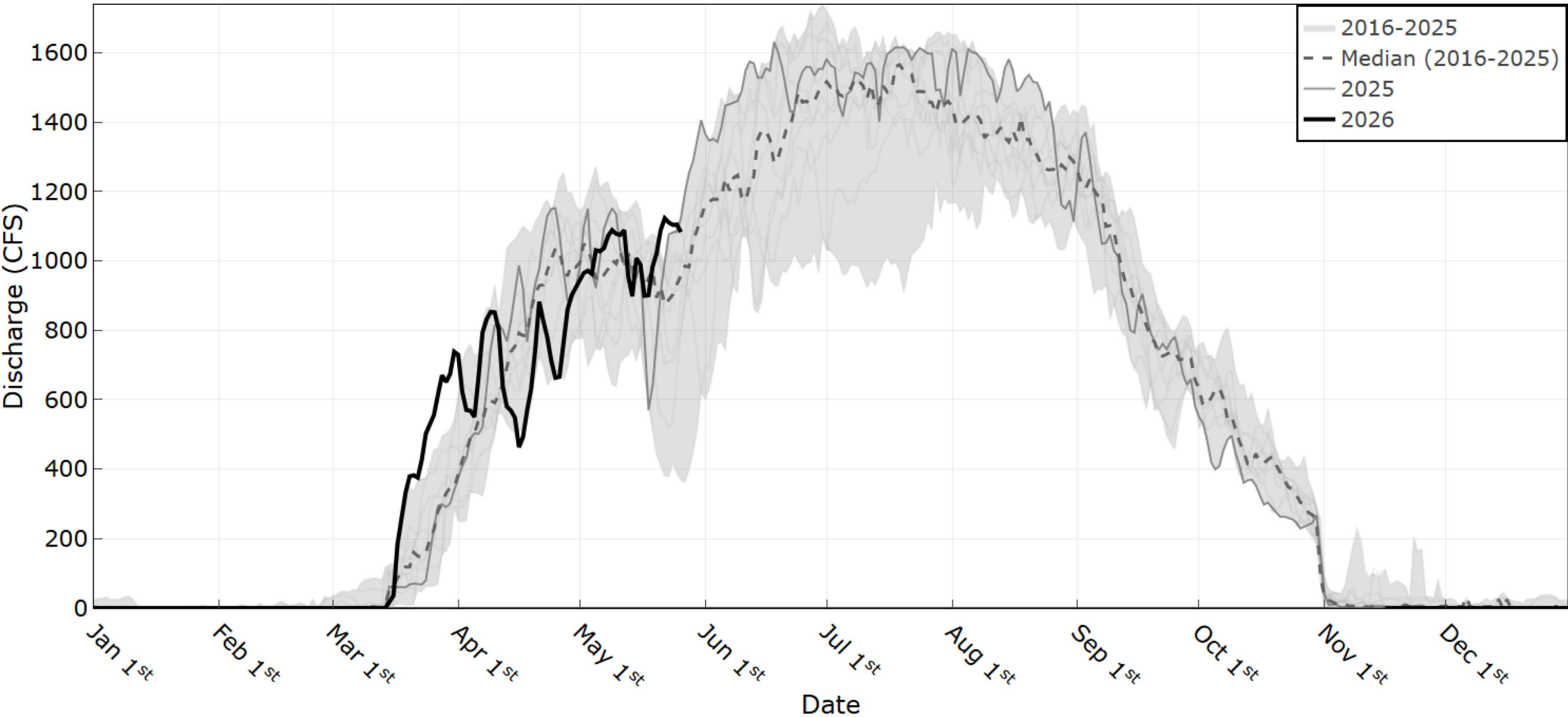
Malad River nr Gooding



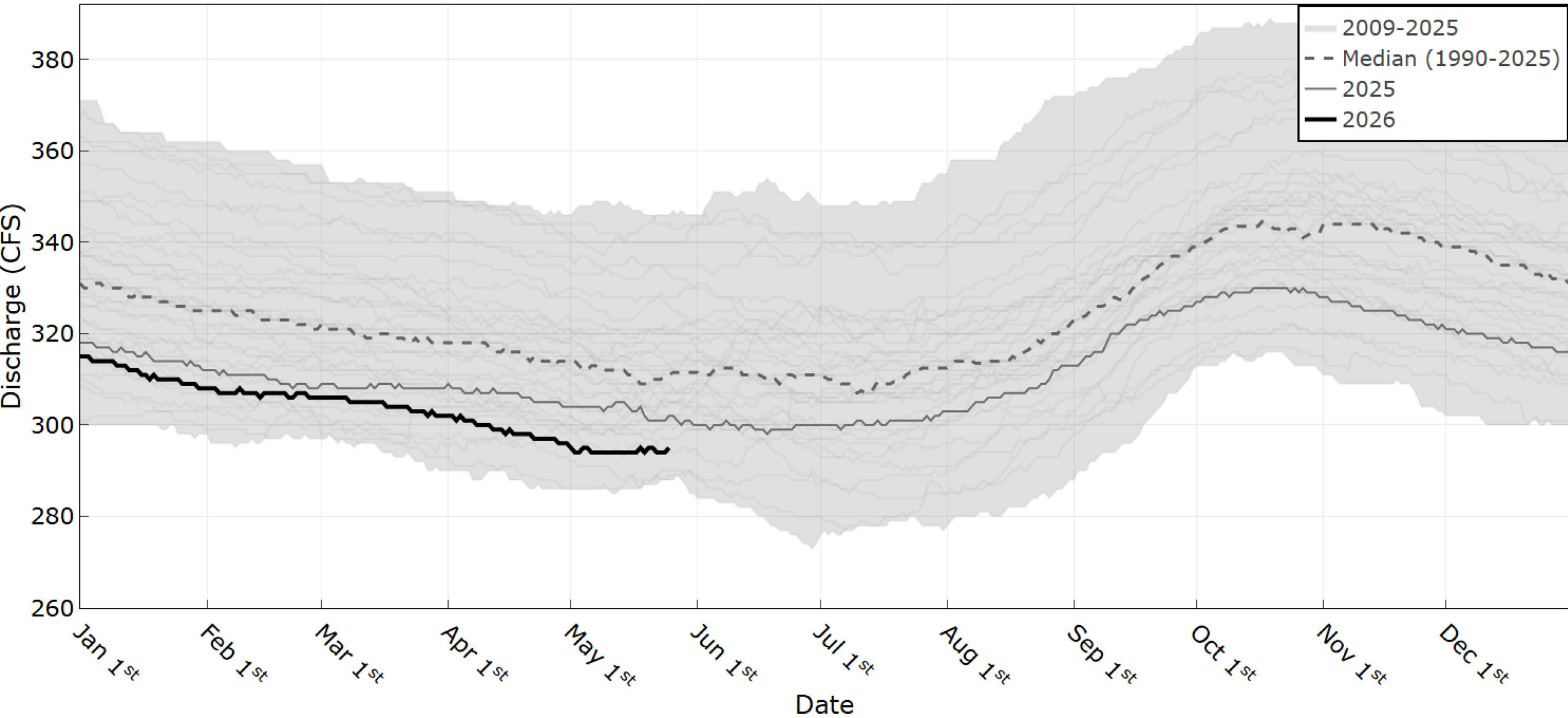
Snake River Southside Return Flows



WD02 Diversions



Box Canyon Spring nr Wendell



SFFT Questions?

Hannah Adams

Hannah.adams@idwr.idaho.gov

(208) 287-4951