








# April Drought Update

Map released: Thurs. May 14, 2026

Data valid: May 12, 2026 at 8 a.m. EDT

## Intensity

-  None
-  D0 (Abnormally Dry)
-  D1 (Moderate Drought)
-  D2 (Severe Drought)
-  D3 (Extreme Drought)
-  D4 (Exceptional Drought)
-  No Data

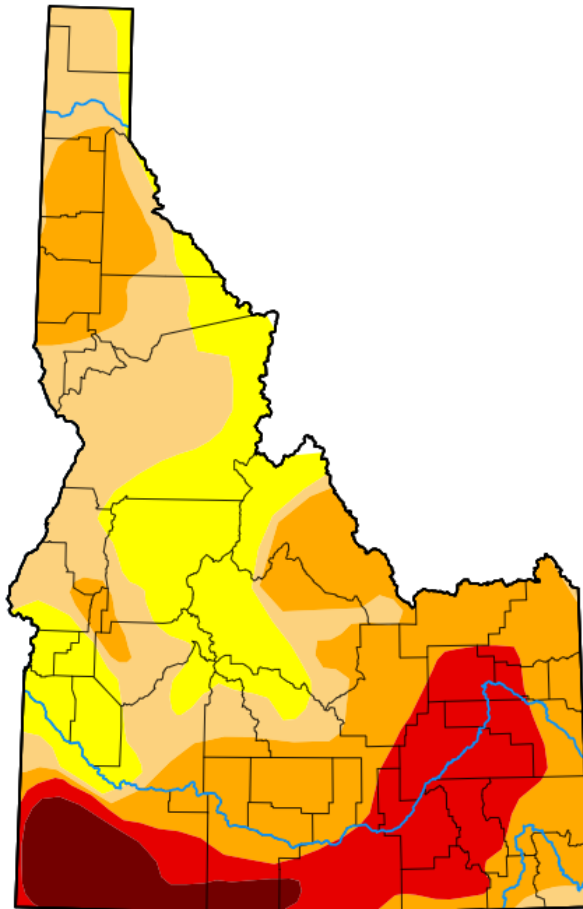
## Authors

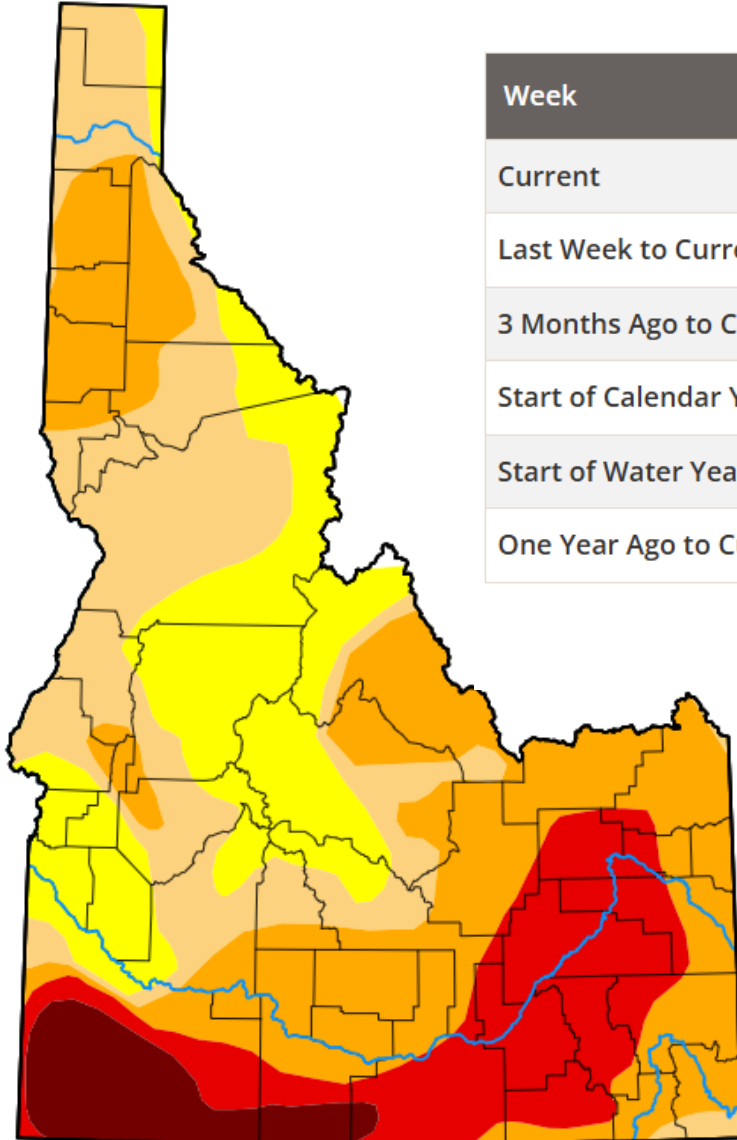
United States and Puerto Rico Author(s):

[Rocky Bilotta](#), NOAA/NCEI

Pacific Islands and Virgin Islands Author(s):

[Tsegaye Tadesse](#), National Drought Mitigation Center

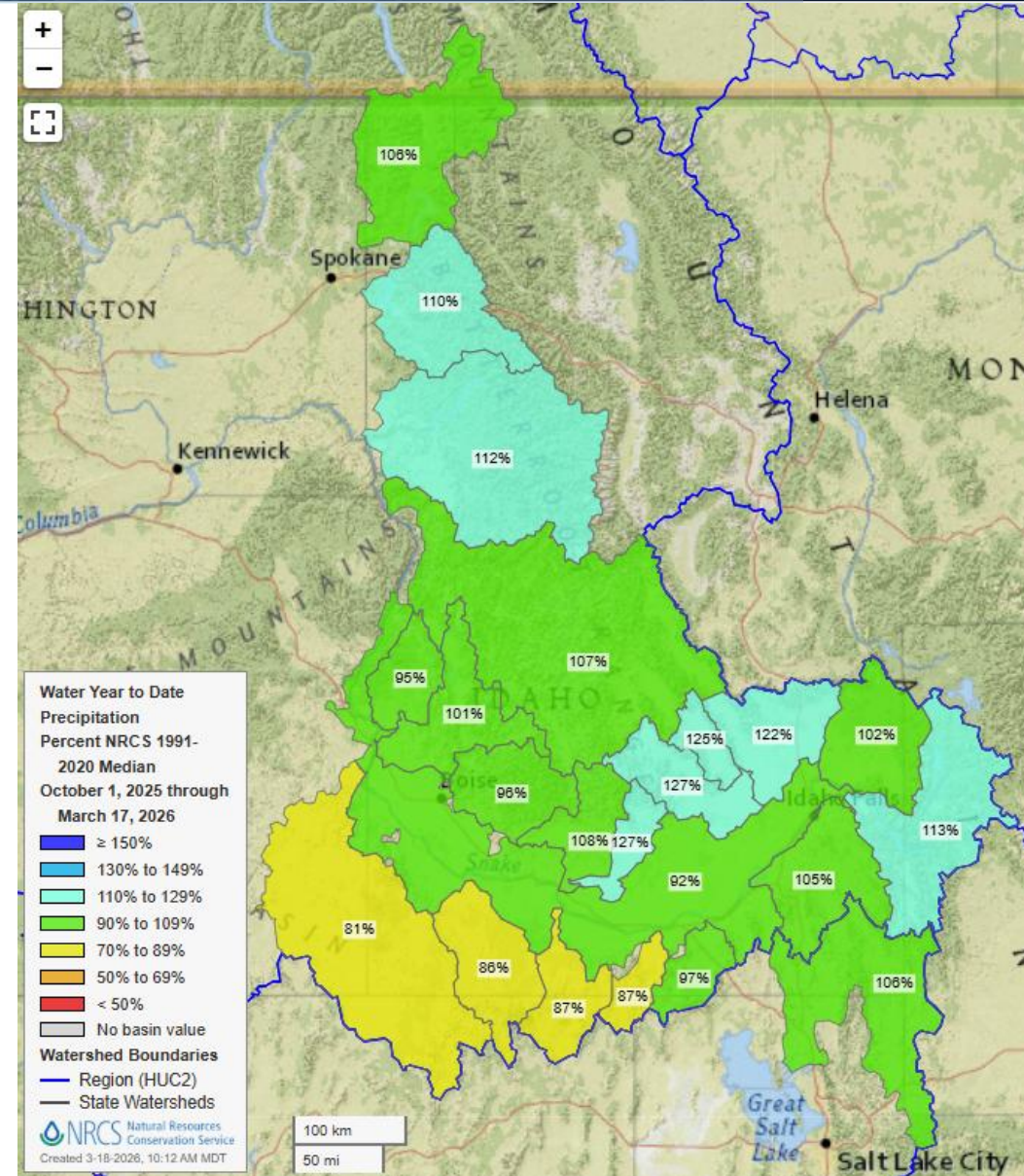
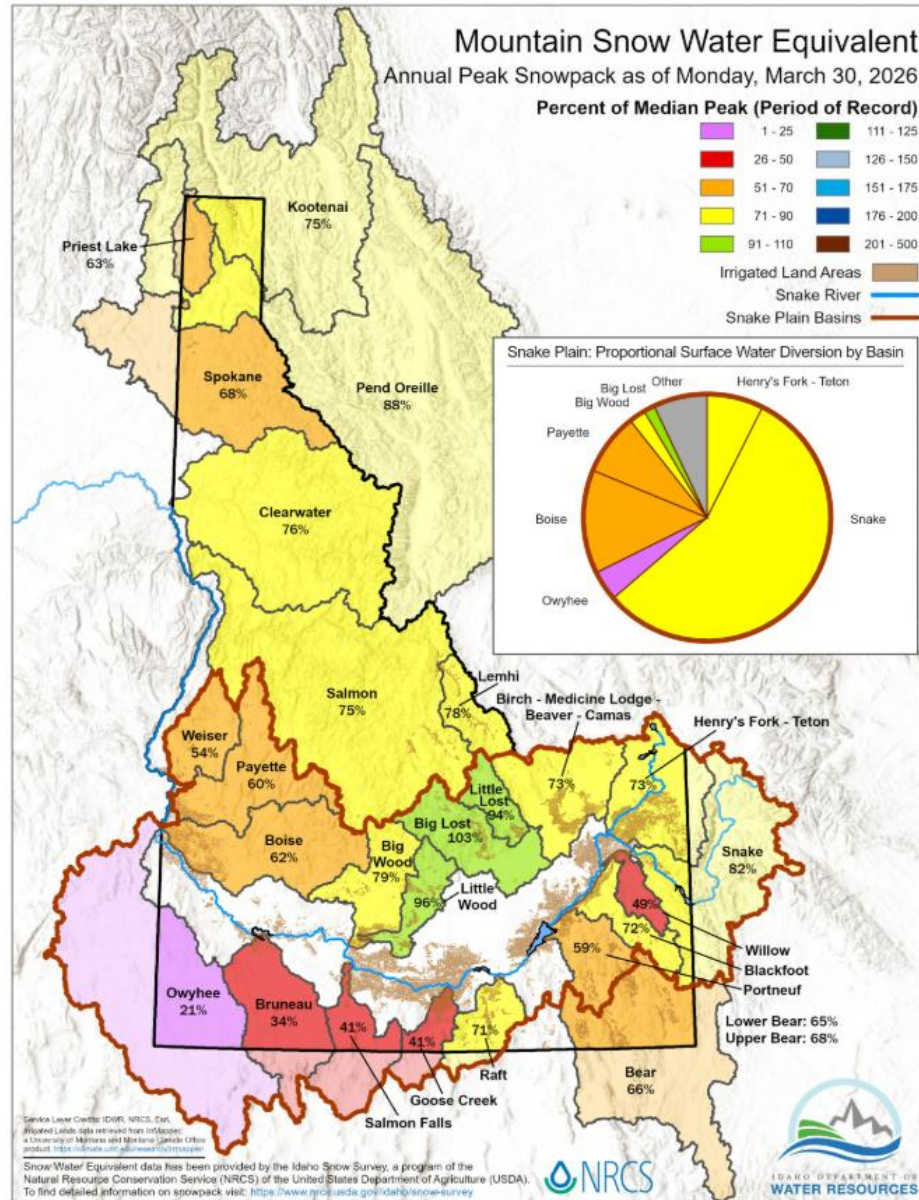




Week	Date	None	D0-D4	D1-D4	D2-D4	D3-D4	D4	DSCI
Current	<a href="#">2026-05-12</a>	0.14	99.86	78.90	53.95	21.14	5.63	259
Last Week to Current	<a href="#">2026-05-05</a>	0.14	99.86	75.49	45.86	11.32	4.73	237
3 Months Ago to Current	<a href="#">2026-02-10</a>	2.08	97.92	58.64	9.16	0.00	0.00	166
Start of Calendar Year to Current	<a href="#">2025-12-30</a>	8.34	91.66	63.09	8.93	0.00	0.00	164
Start of Water Year to Current	<a href="#">2025-09-30</a>	0.00	100.00	90.28	48.69	13.54	4.11	257
One Year Ago to Current	<a href="#">2025-05-13</a>	40.61	59.39	23.29	0.00	0.00	0.00	83

Estimated Population in Drought Areas: **903,656**







# Questions?



## Contact:

David Hoekema  
Idaho Department of Water Resources  
Hydrologist  
(714) 697-3203 (Cell)  
(208) 287-4830 (Office)  
[david.Hoekema@idwr.idaho.gov](mailto:david.Hoekema@idwr.idaho.gov)