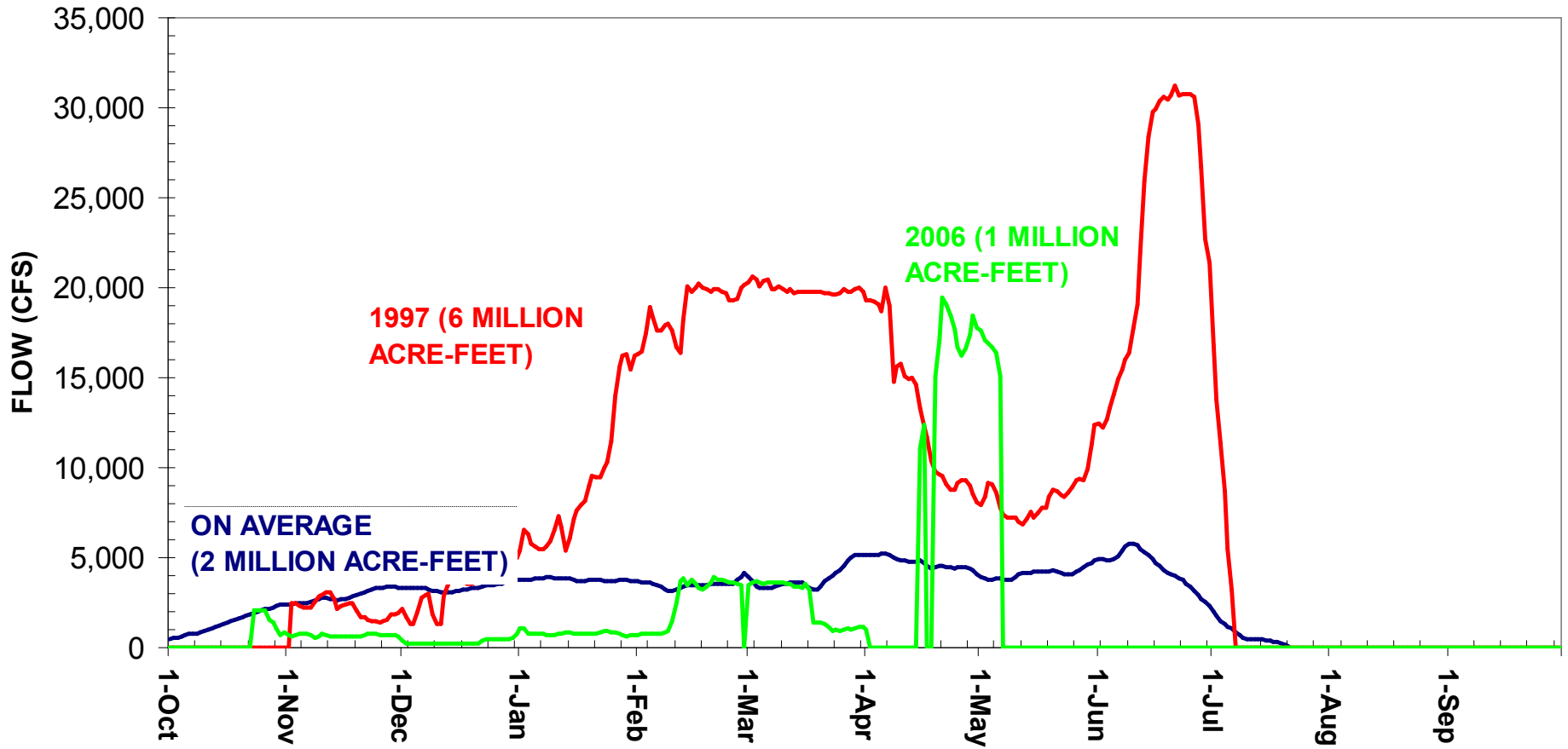


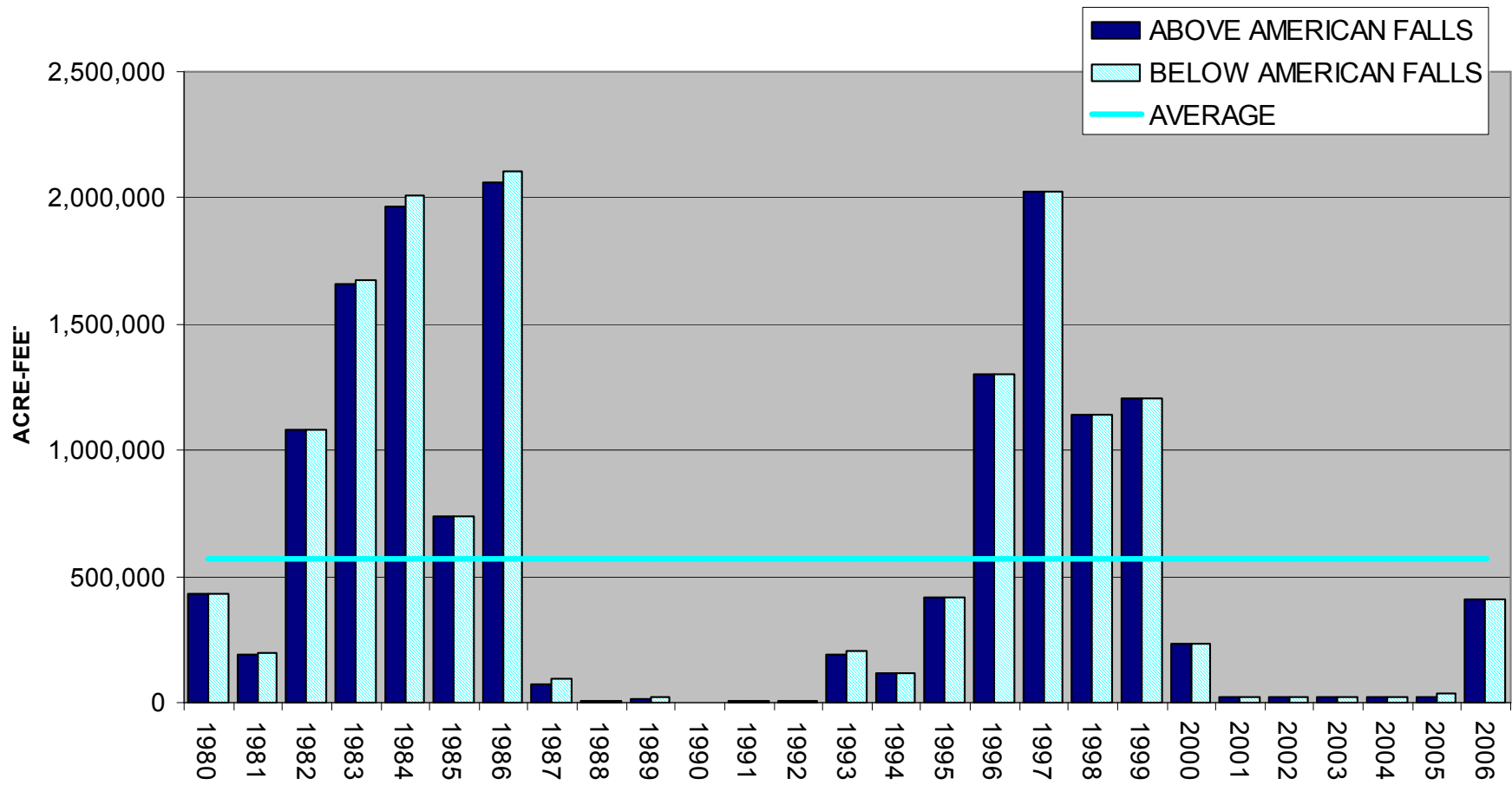
### AVERAGE DAILY SPILL PAST MILNER FROM 1980-2006, WITH 1997 AND 2006 DAILY SPILL

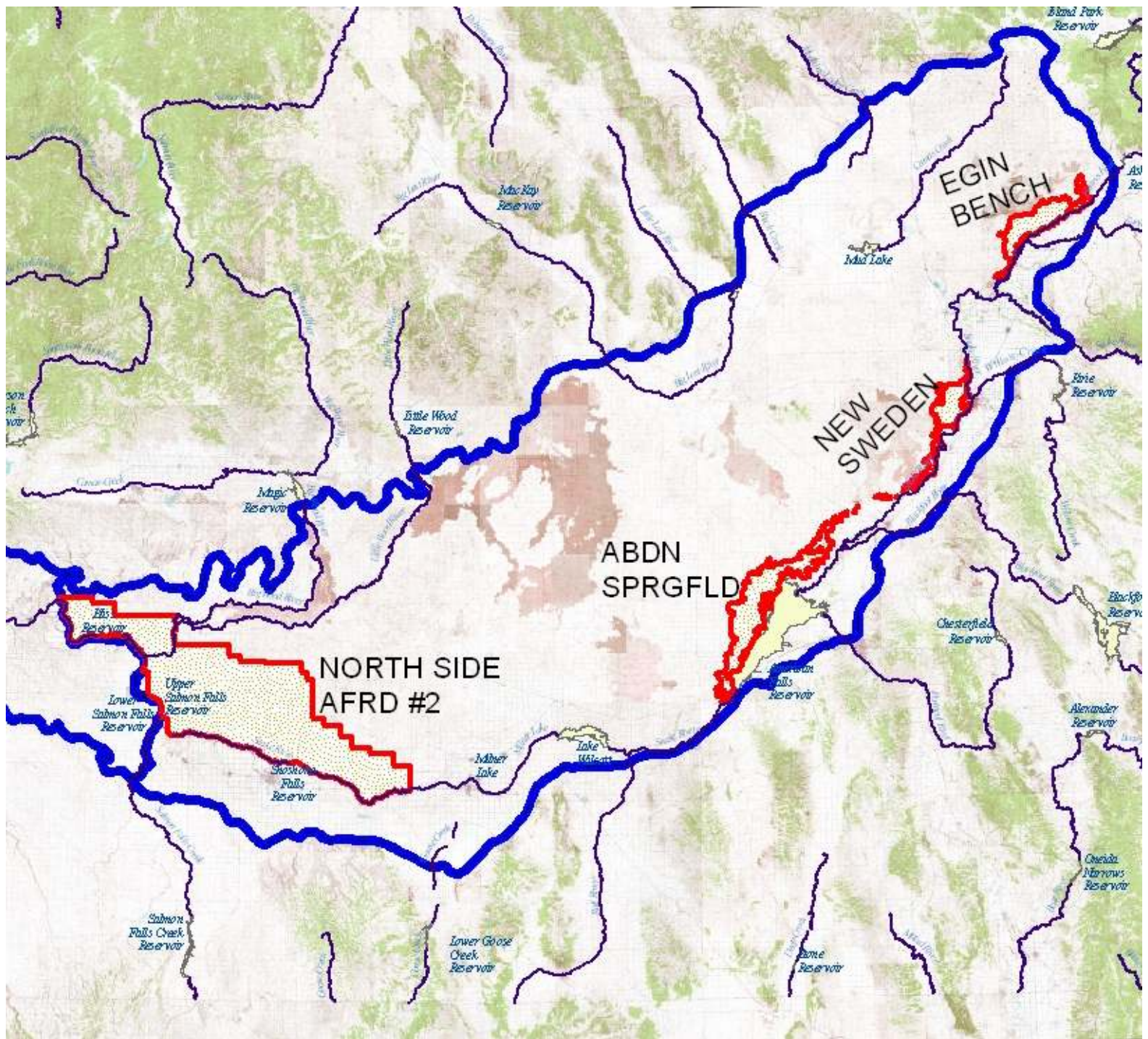


# SPILLED MILNER WATER TARGETTED USES

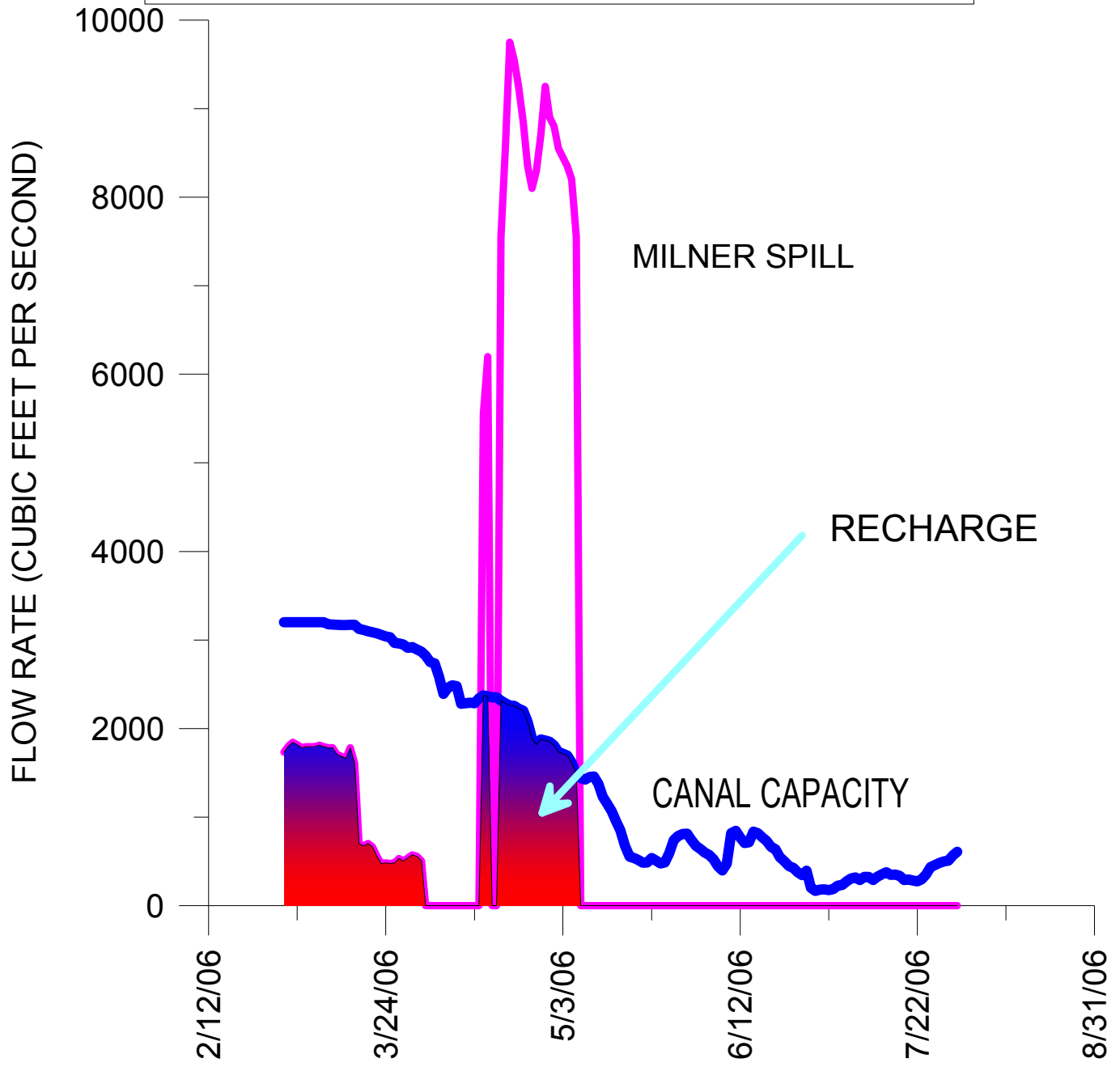
- MANAGED RECHARGE THROUGH CANALS
  - Above American Falls
    - Egin Bench
    - New Sweden
    - Aberdeen Springfield
  - Below American Falls (North Side and AFRD #2)
- HARD CONVERSIONS
  - A & B IRRIGATION DISTRICT
- SOFT CONVERSIONS
  - Lands above and below Minidoka with near-ready ability to use surface water

## ANNUAL MILNER SPILLS SHOWN BY AVAILABILITY ABOVE AND BELOW AMERICAN FALLS

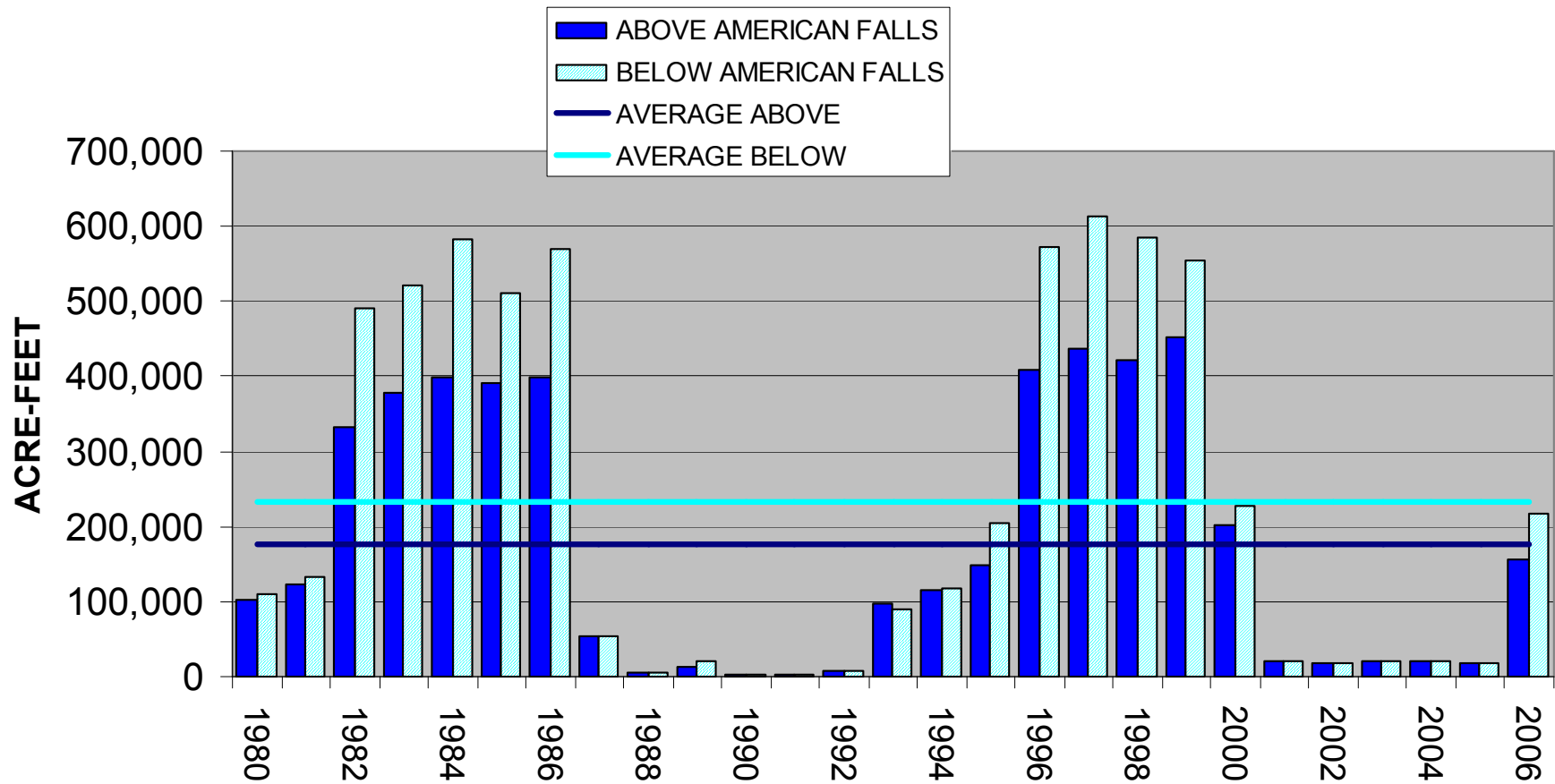




2006 MILNER SPILL AVAIL. ABV AMF, AVAIL. CANAL CAPACITY, AND RECHARGE WATER USED



## RECHARGE THROUGH CANALS WITH EXTRA CAPACITY IN MARCH - JULY USING FLOWS SPILLED PAST MILNER



# CONVERSION ACRES

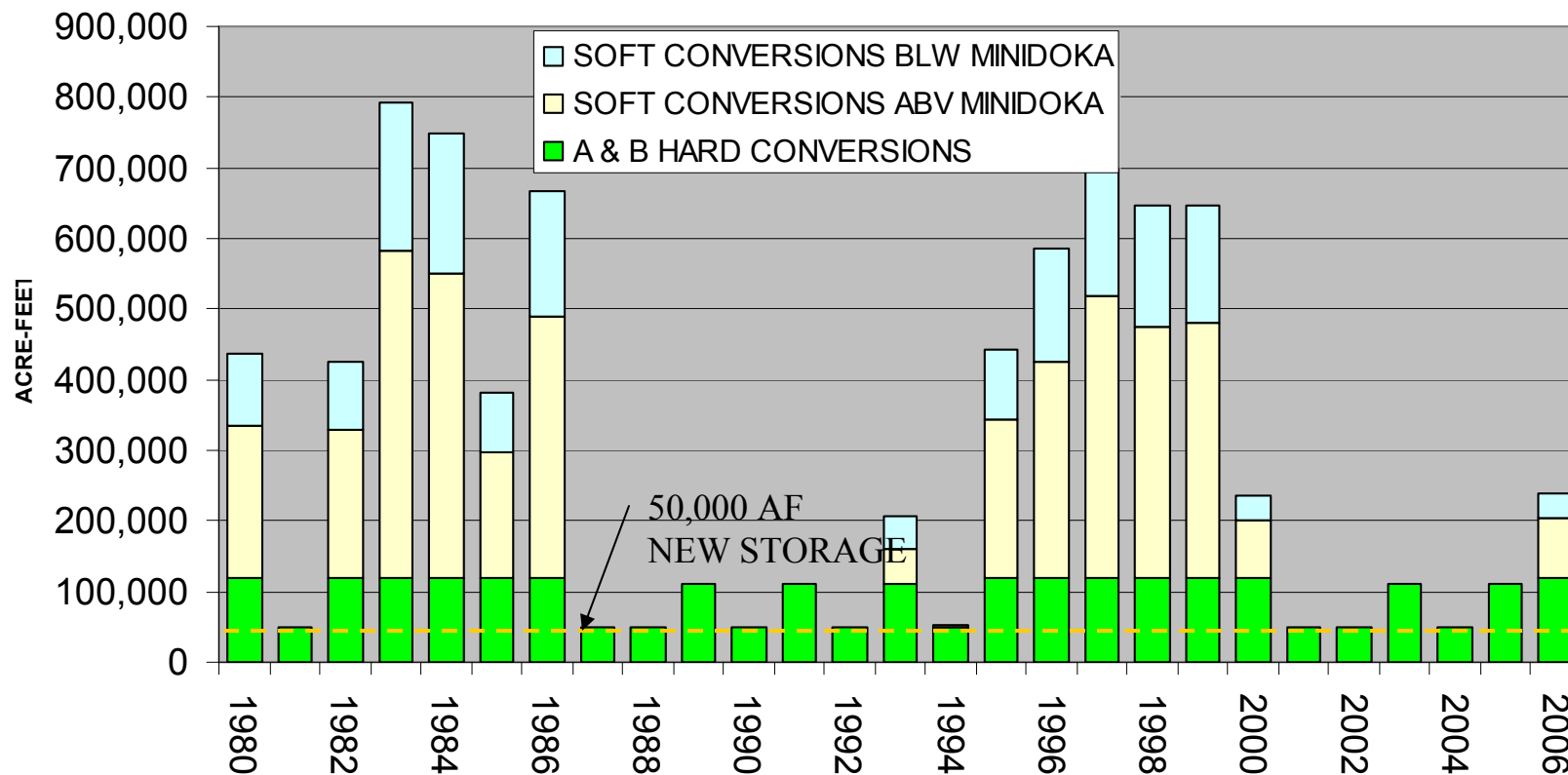
- HARD CONVERSIONS (A & B IRRIG. DIST.) GETS PRIORITY
  - Water sources availability assumed all irrigation season:
    - 50,000 acre-feet of new storage at Minidoka Dam
    - Buyout of high-lift pump projects exchanged for flow augmentation water
      - Average 101,000 acre-feet per year
      - Maximum of 205,000 acre-feet per year

# CONVERSION ACRES (CONT.)

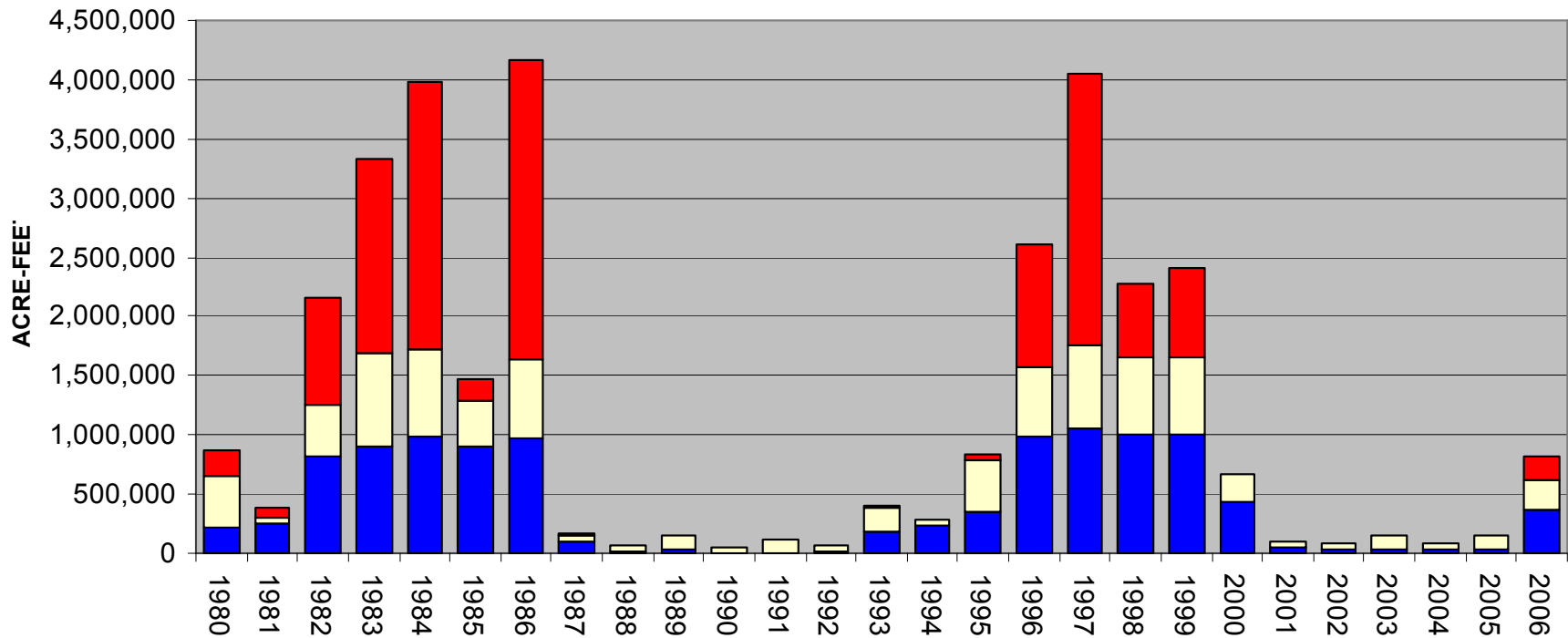
- SOFT CONVERSIONS
  - Constrained by acres with access to surface water supply
    - 2/3 of identified acres are above Minidoka, 1/3 are below
      - Use demand of 2300 cubic ft. per second above Minidoka
      - Demand of 1100 cubic ft. per second below Minidoka
  - Sources of water:
    - Unused Milner spills in May and June
    - Unused high-lift exchange water in July through September



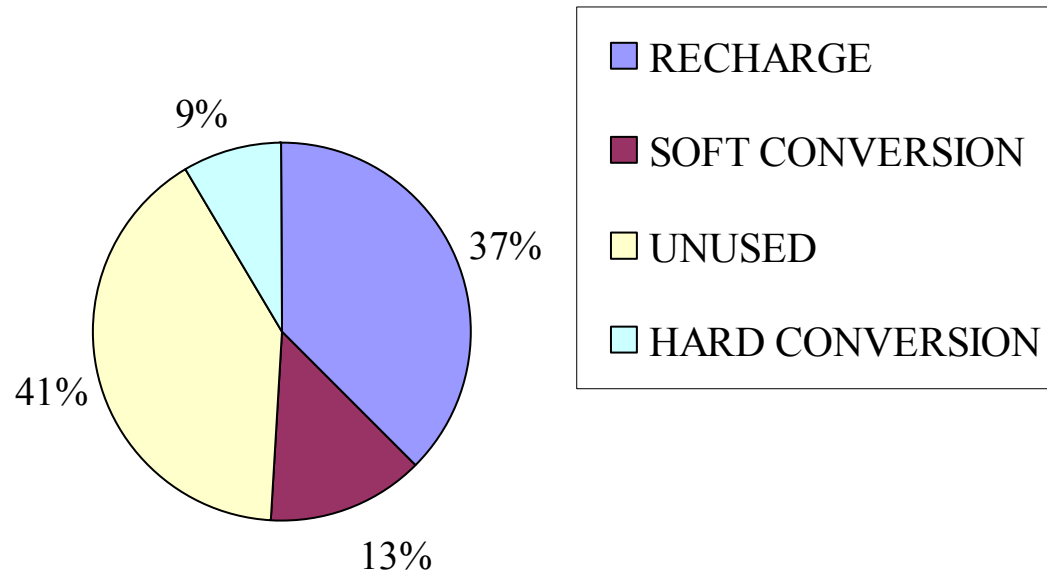
## A & B HARD CONVERSIONS AND SOFT CONVERSIONS ABOVE AND BELOW MINIDOKA



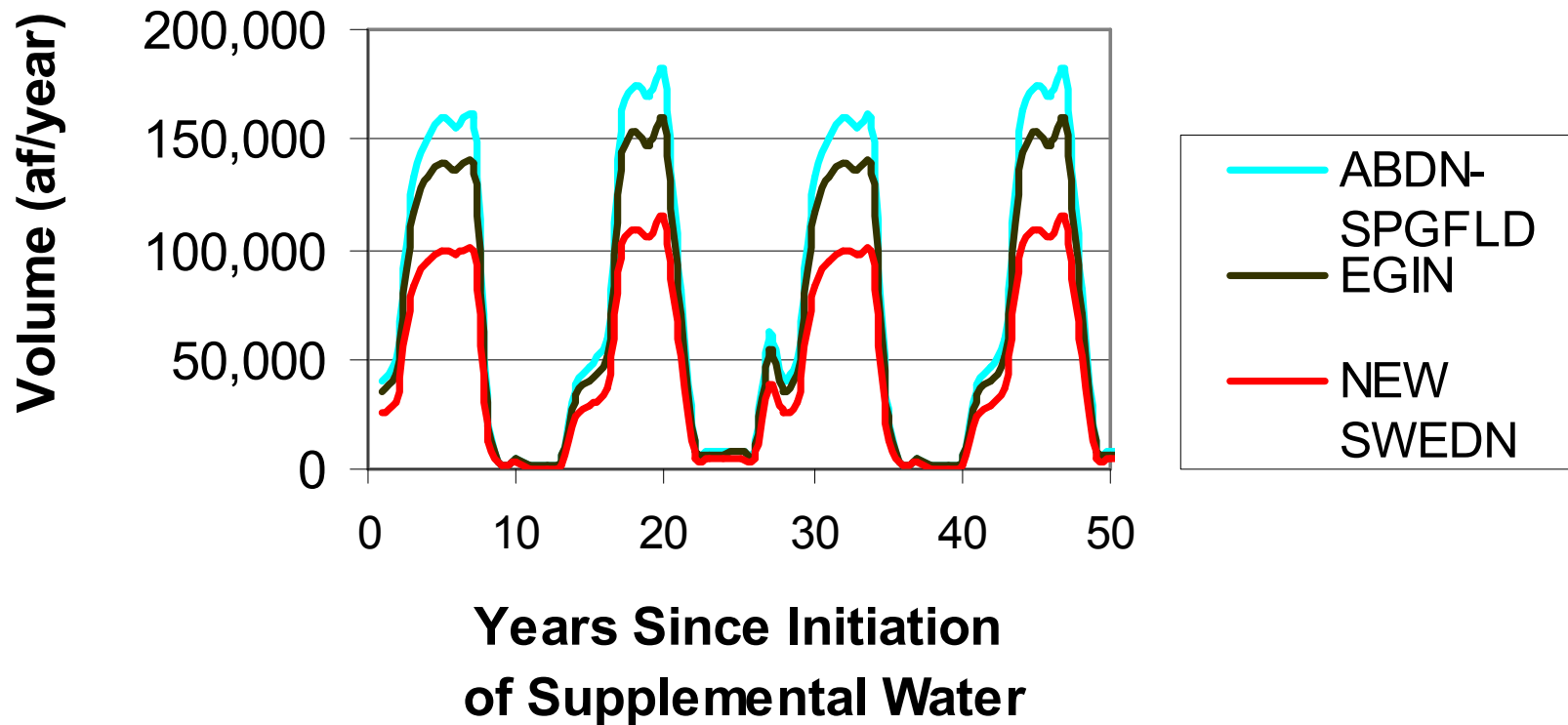
## USE OF SPILLED MILNER WATER FOR AQUIFER RESTORATION



**AVERAGE ANNUAL POTENTIAL DISPOSITION  
OF SPILLED SNAKE RIVER WATER**



## Managed Recharge Above American Falls



### Averages:

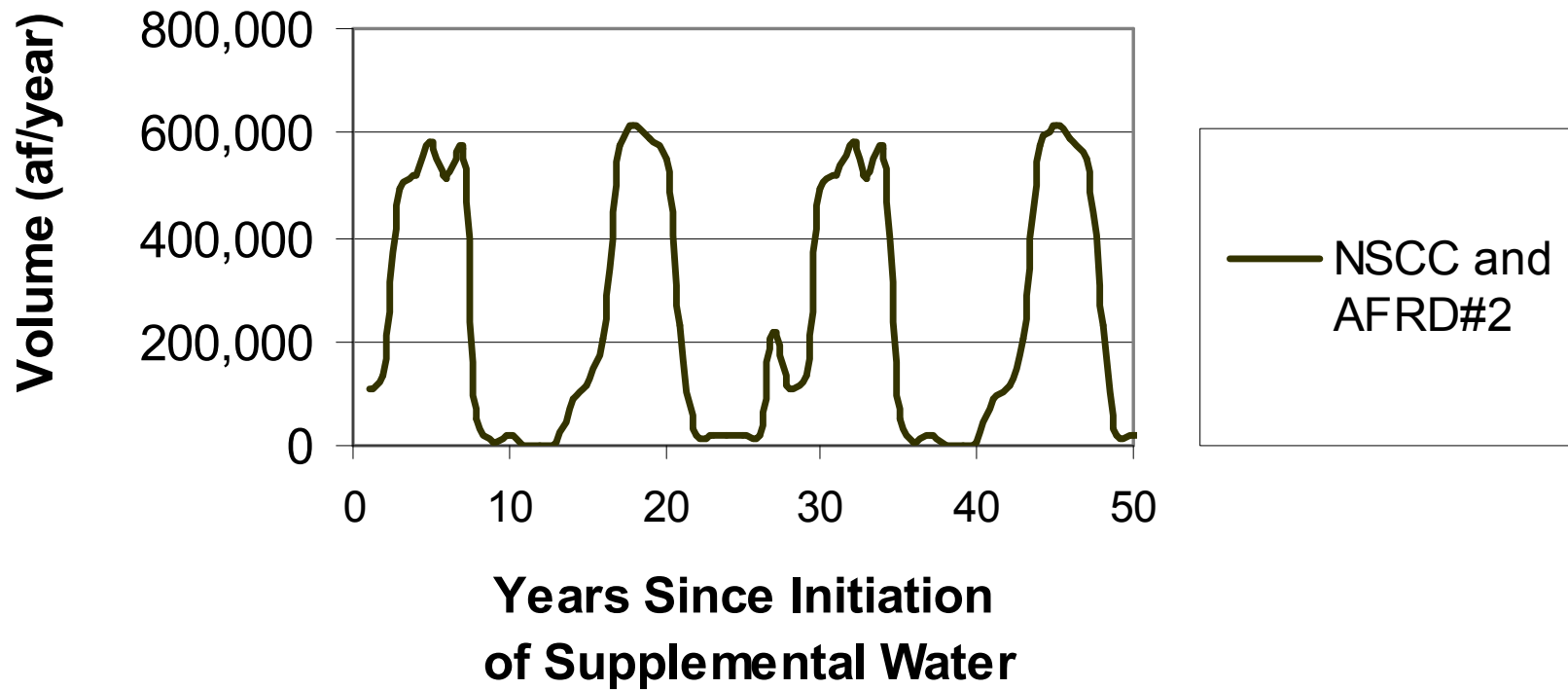
Aberdeen-Springfield: 70,315 af/year

Egin Bench: 61,526

New Sweden: 43,947

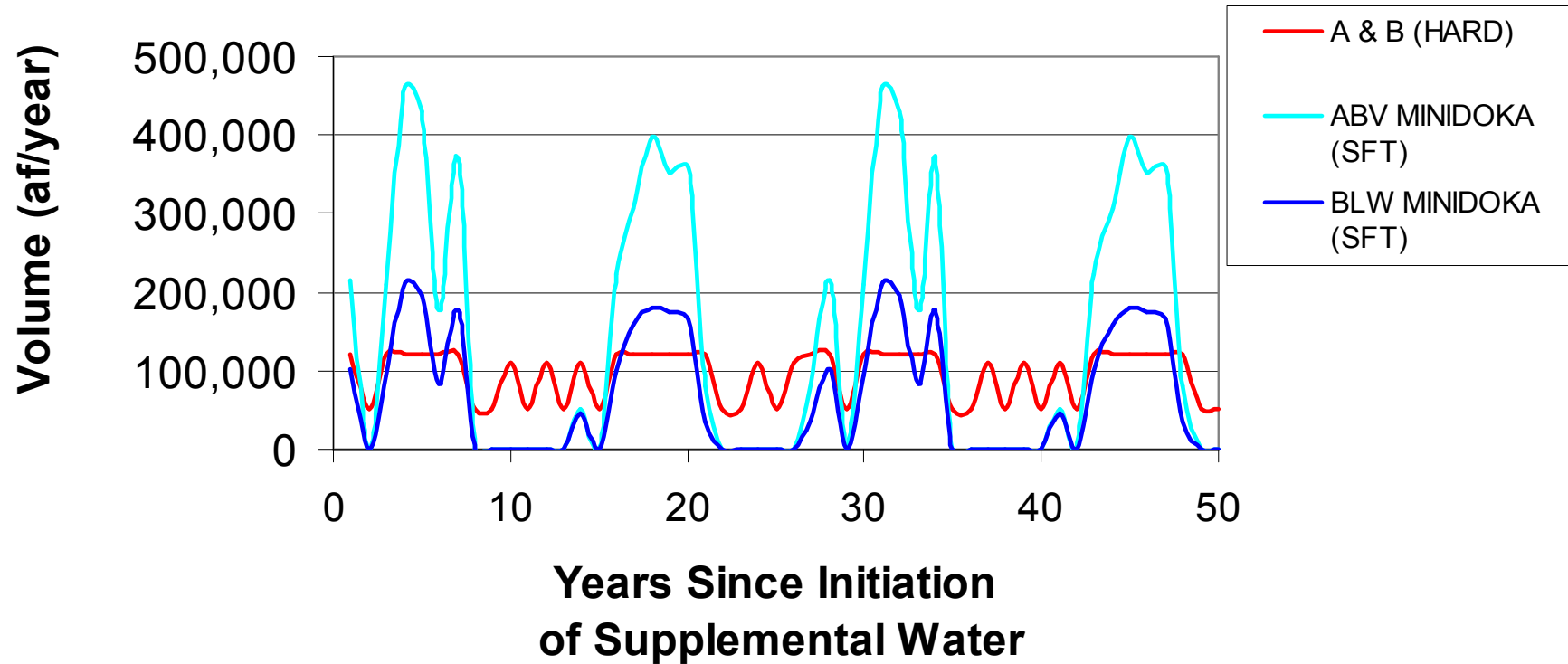
Total: 175,789

## Managed Recharge Below American Falls



Average: 232,989 af/year

## Conversion Acres



### Averages:

A & B (HARD): 94,815 af/year

ABV MINIDOKA : 137,786

BLW MINIDOKA: 65,327

Total: 297,928