



CAMP November 15, 2007

Allan Wylie
IDWR



Assumptions

- # 1980 to present is best estimate of future conditions
 - Repeat past 22 years
 - # Limited only by water availability and canal capacity
 - If we can get water to recharge site, we can recharge it
 - If we can get water to conversion site, farmer will use it
-

Outline

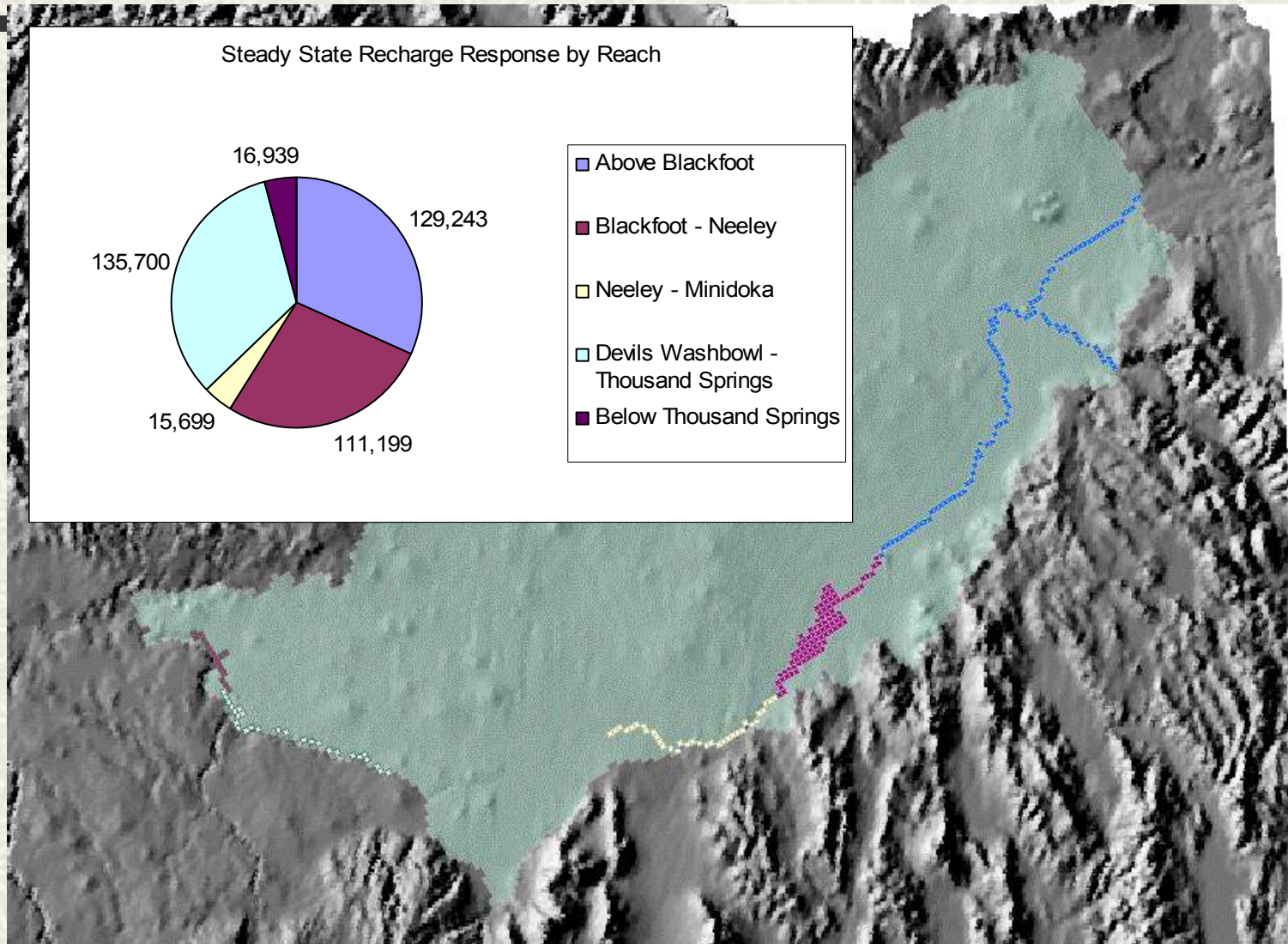
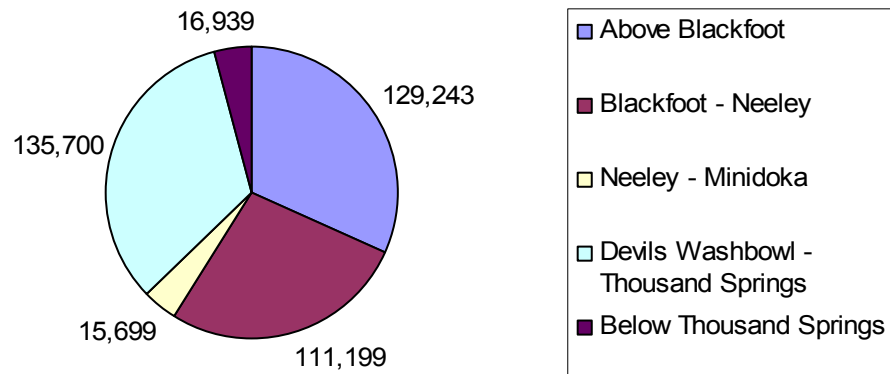
- # Managed Recharge
 - # Hard Conversions
 - Converting lands without a surface water right to surface water
 - # Soft Conversions
 - Providing lands with both surface and ground water rights more surface water
 - # CREP
 - Interpret this as any reduction in depletions
 - # Summary
-

Managed Recharge

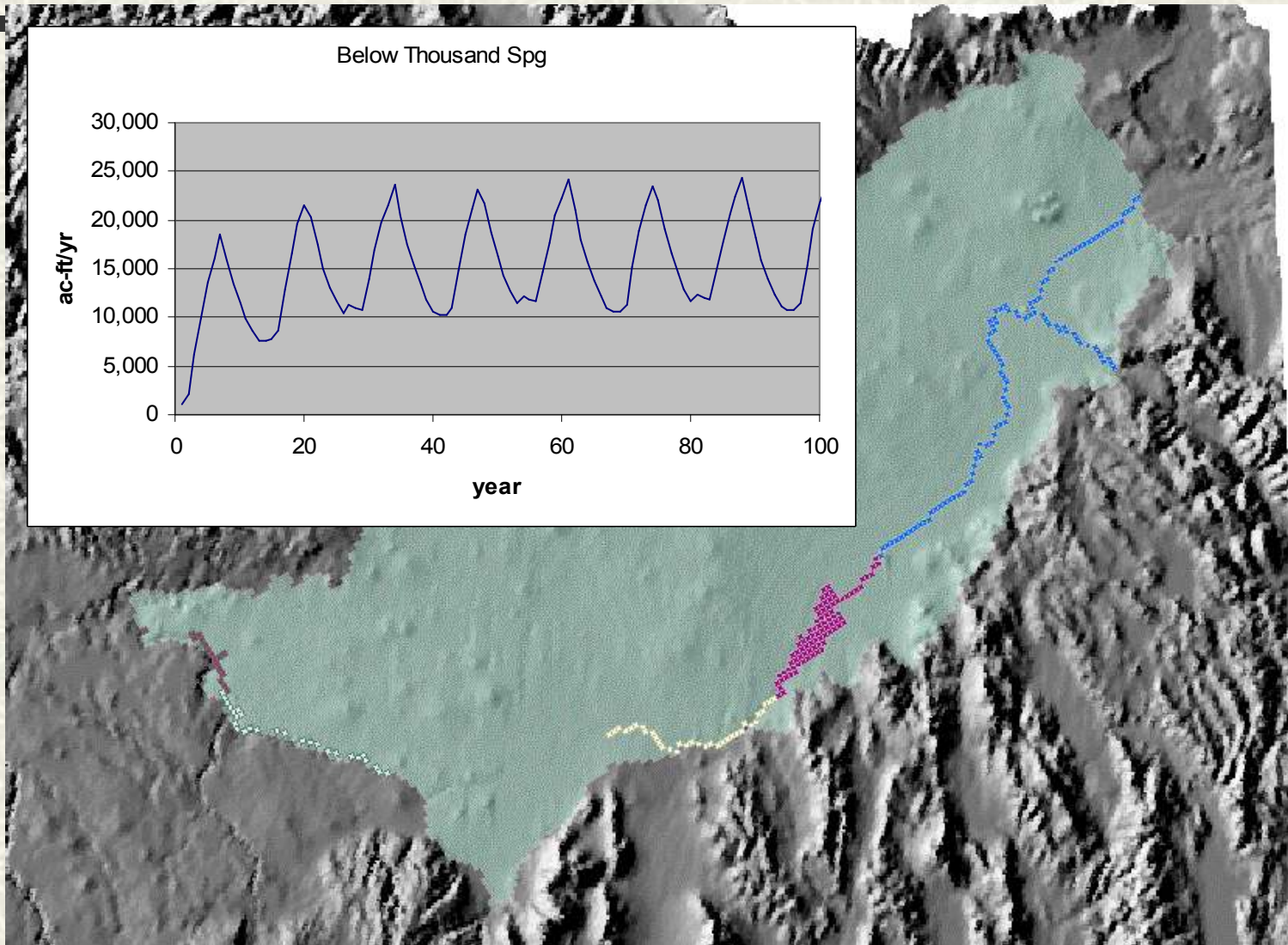
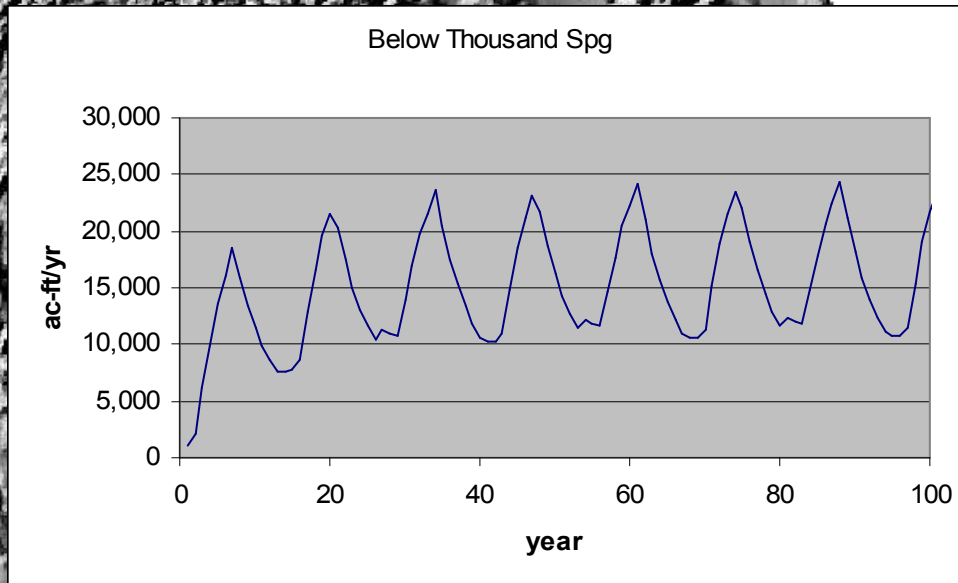
- # Data from Steve identifies water available above and below American Falls
 - # Apportion between recharge sites based on canal capacity
 - On average 408,781 ac-ft available
 - More available some years than others
-

Managed Recharge

Steady State Recharge Response by Reach



Managed Recharge

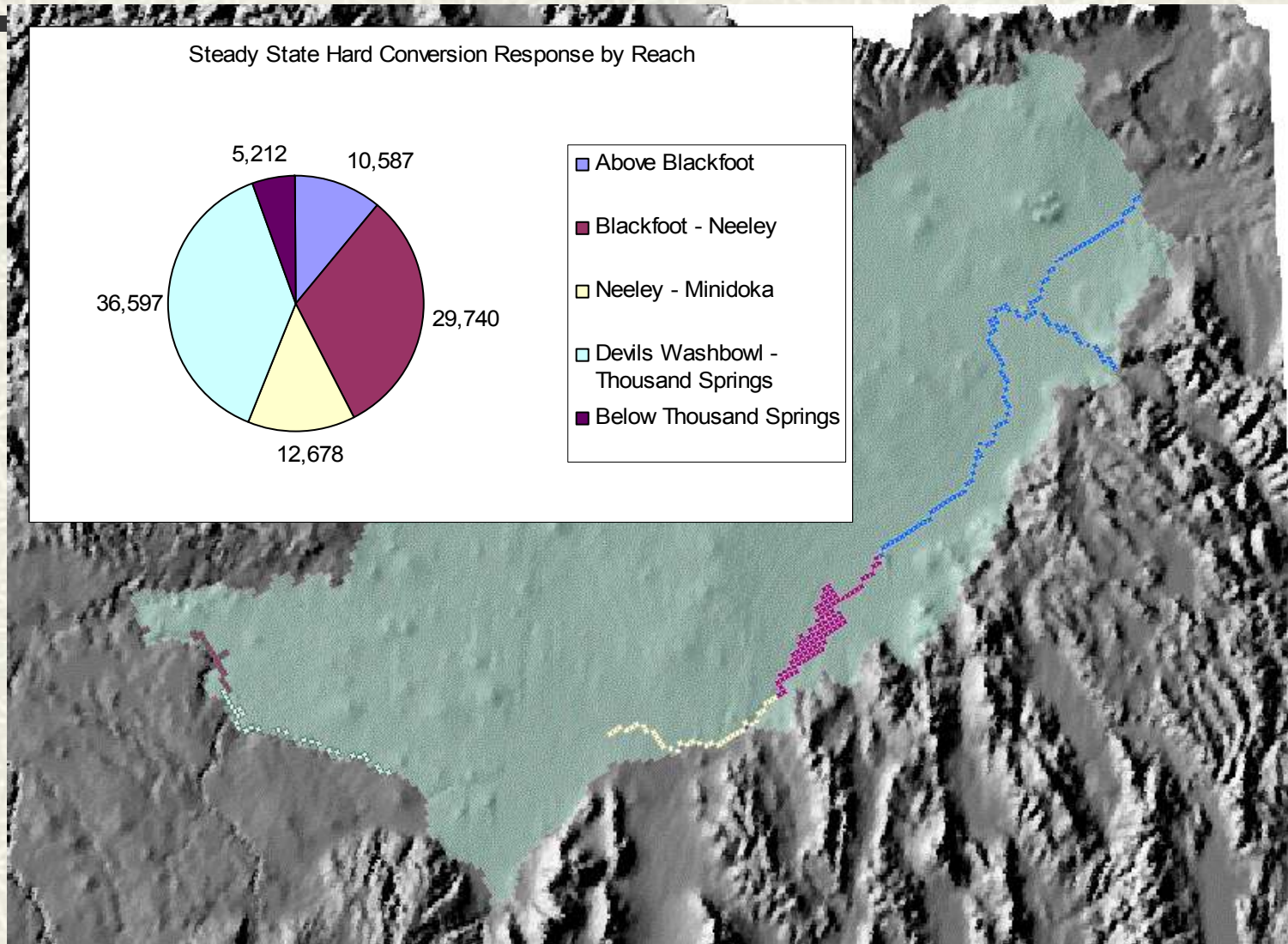
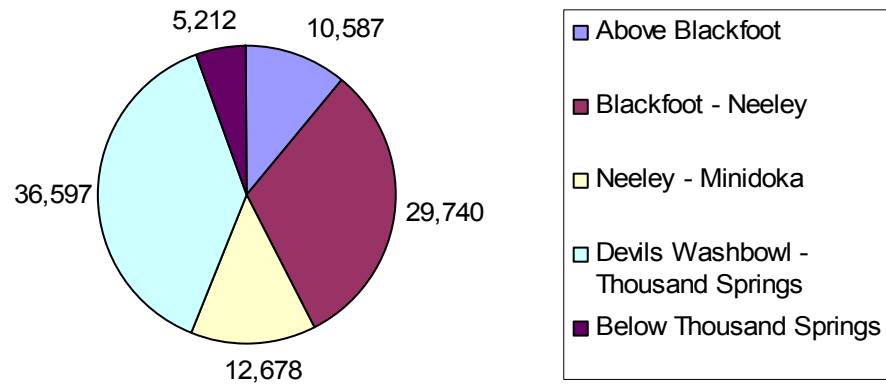


Hard Conversions

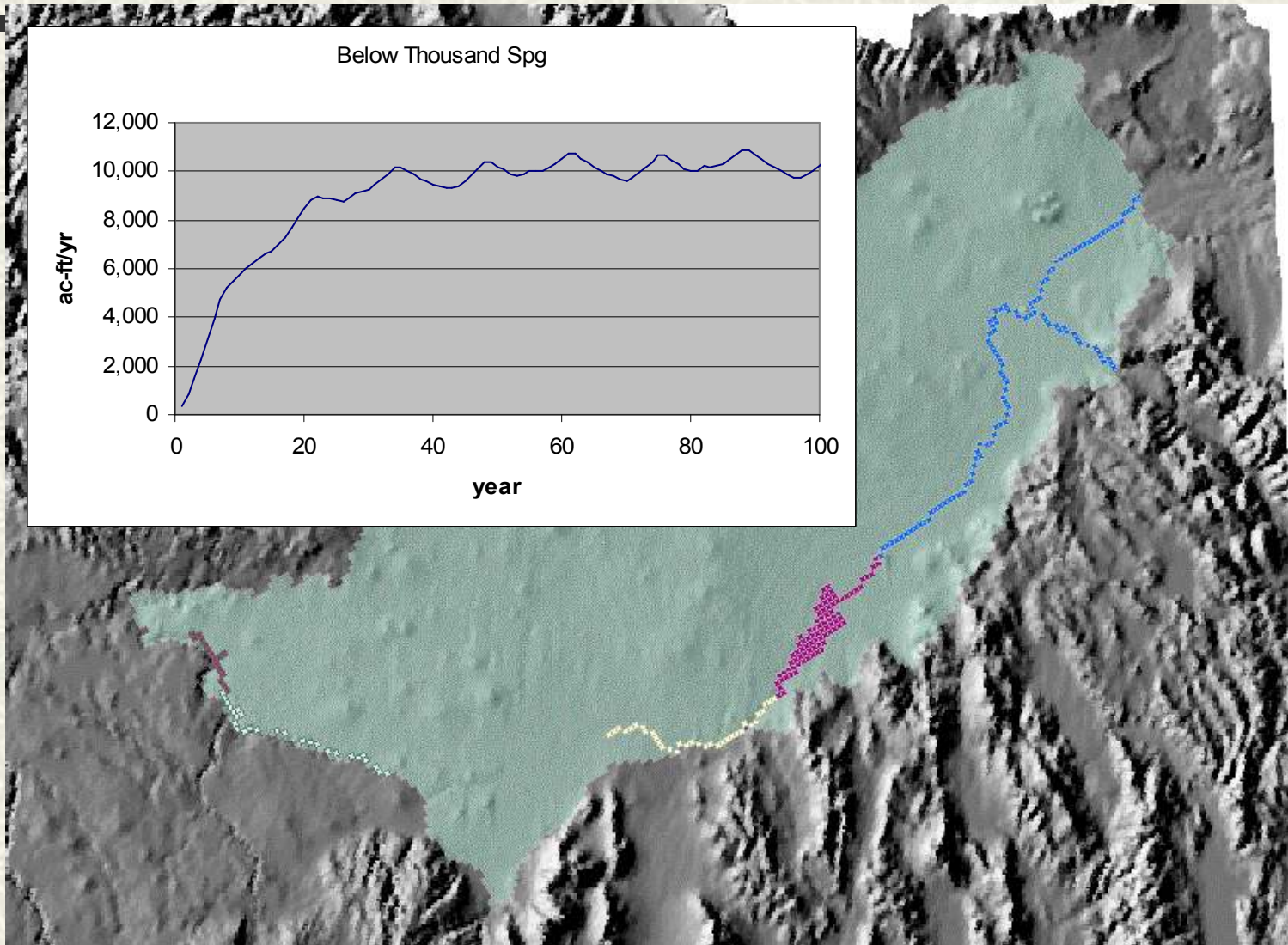
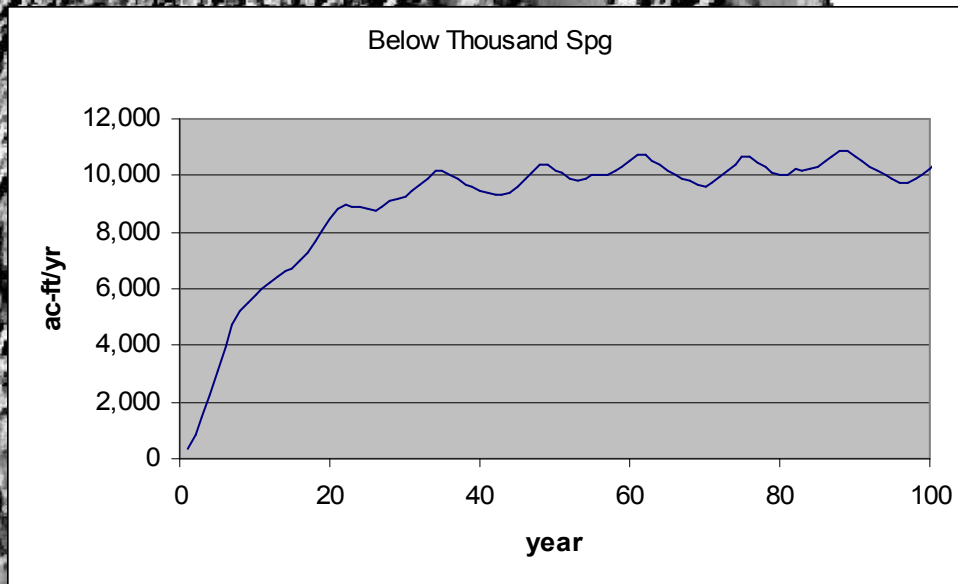
- # Convert A&B from ground water to surface water
 - # Purchase high lift water and transfer
 - Use additional storage
 - # Data from Steve identifies water available
 - On average 94,815 ac-ft available
 - More available some years than others
-

Hard Conversions

Steady State Hard Conversion Response by Reach



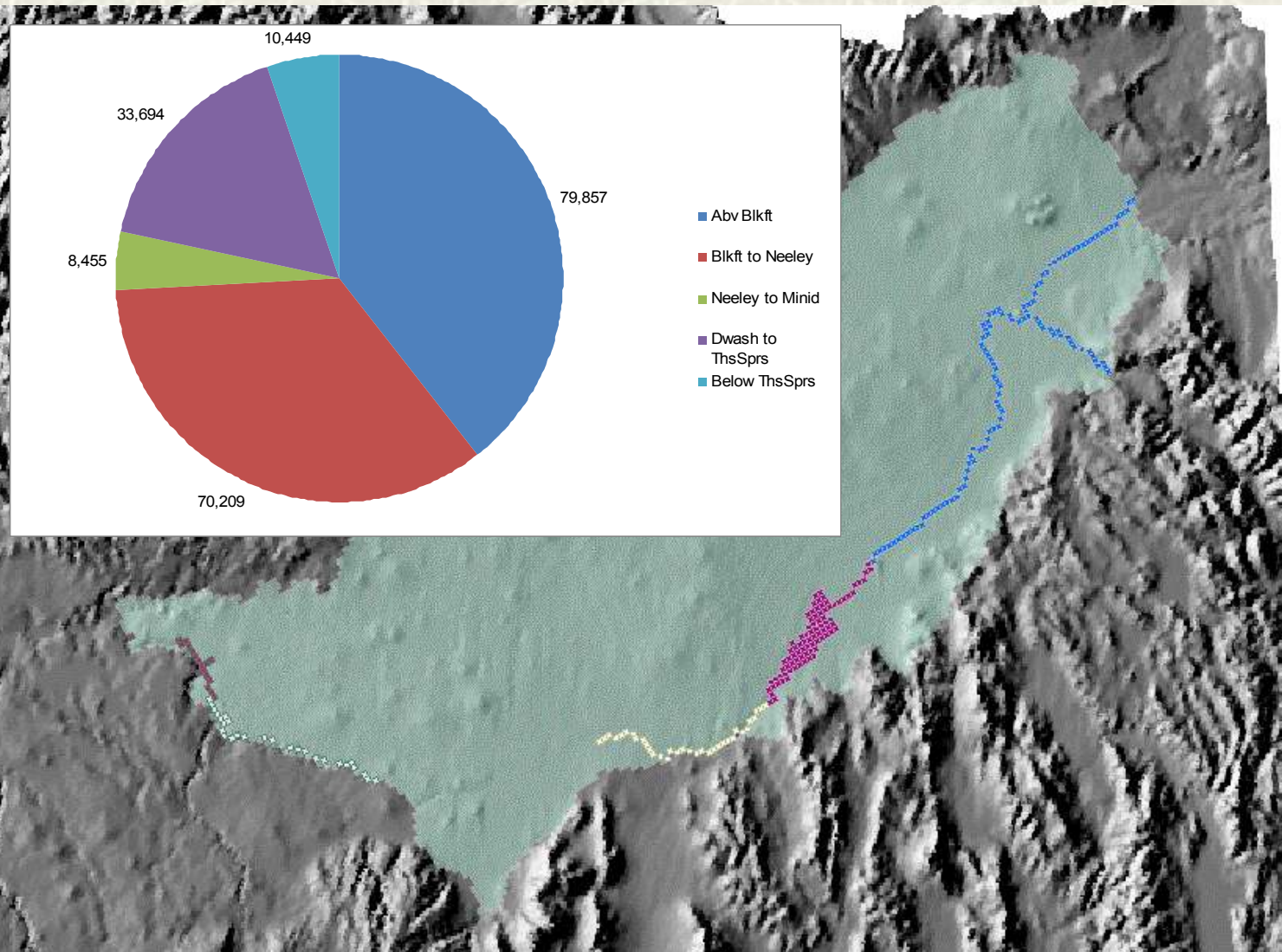
Hard Conversions



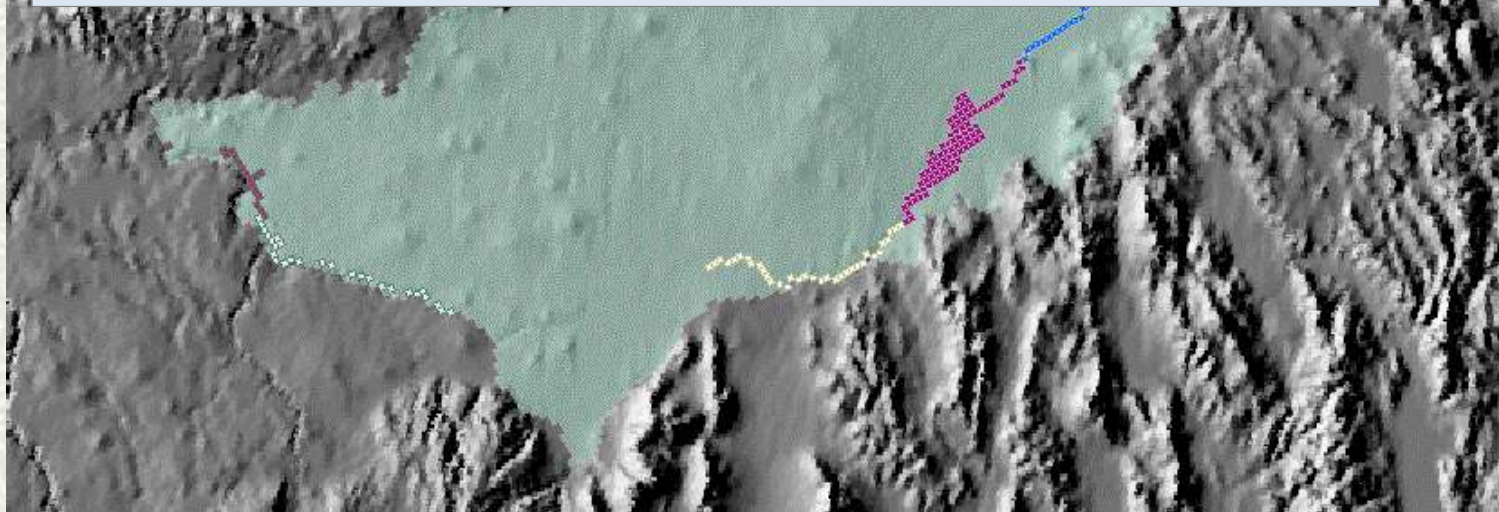
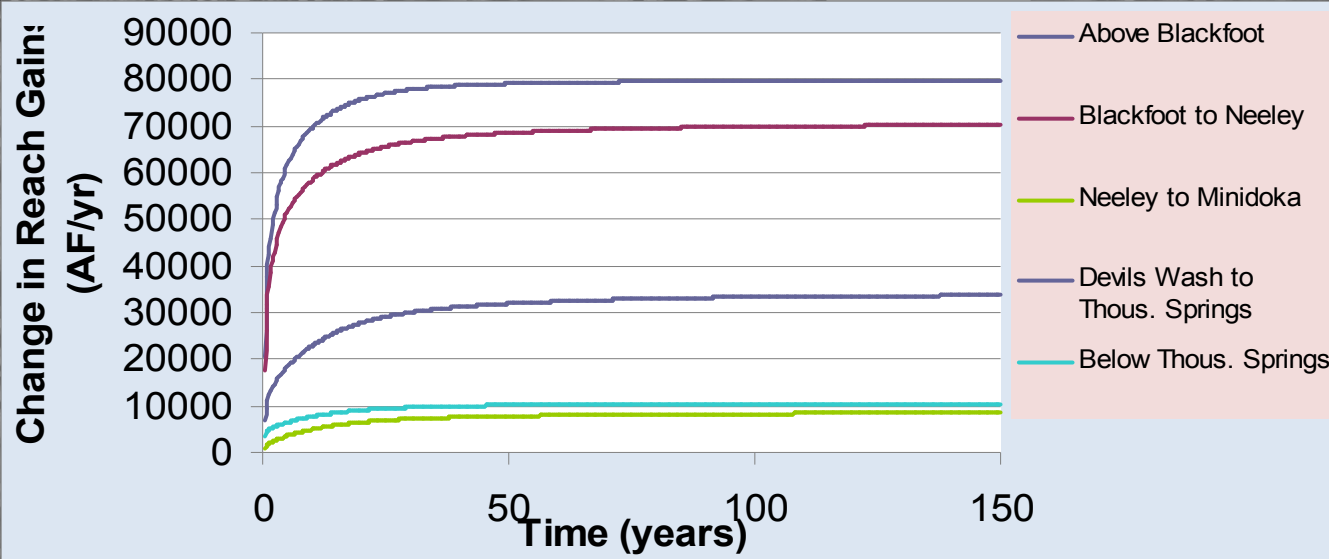
Soft Conversions

- # Supply more water to mixed source lands
 - # Purchase high lift water and use excess recharge water
 - # Data from Steve identifies water available
 - On average 137,786 ac-ft available above American Falls
 - On average 65,327 ac-ft available below American Falls
 - Limited to some extent by available mixed source lands
 - More available some years than others
-

Soft Conversions



Soft Conversions



CREP Conversions

Use current IDWR approved acres and scale up to 100,000 ac

Bingham - 41,906

Blaine – 316

Bonneville – 473

Cassia - 8,971

Clark - 4,672

Gooding - 434

Jefferson - 4,672

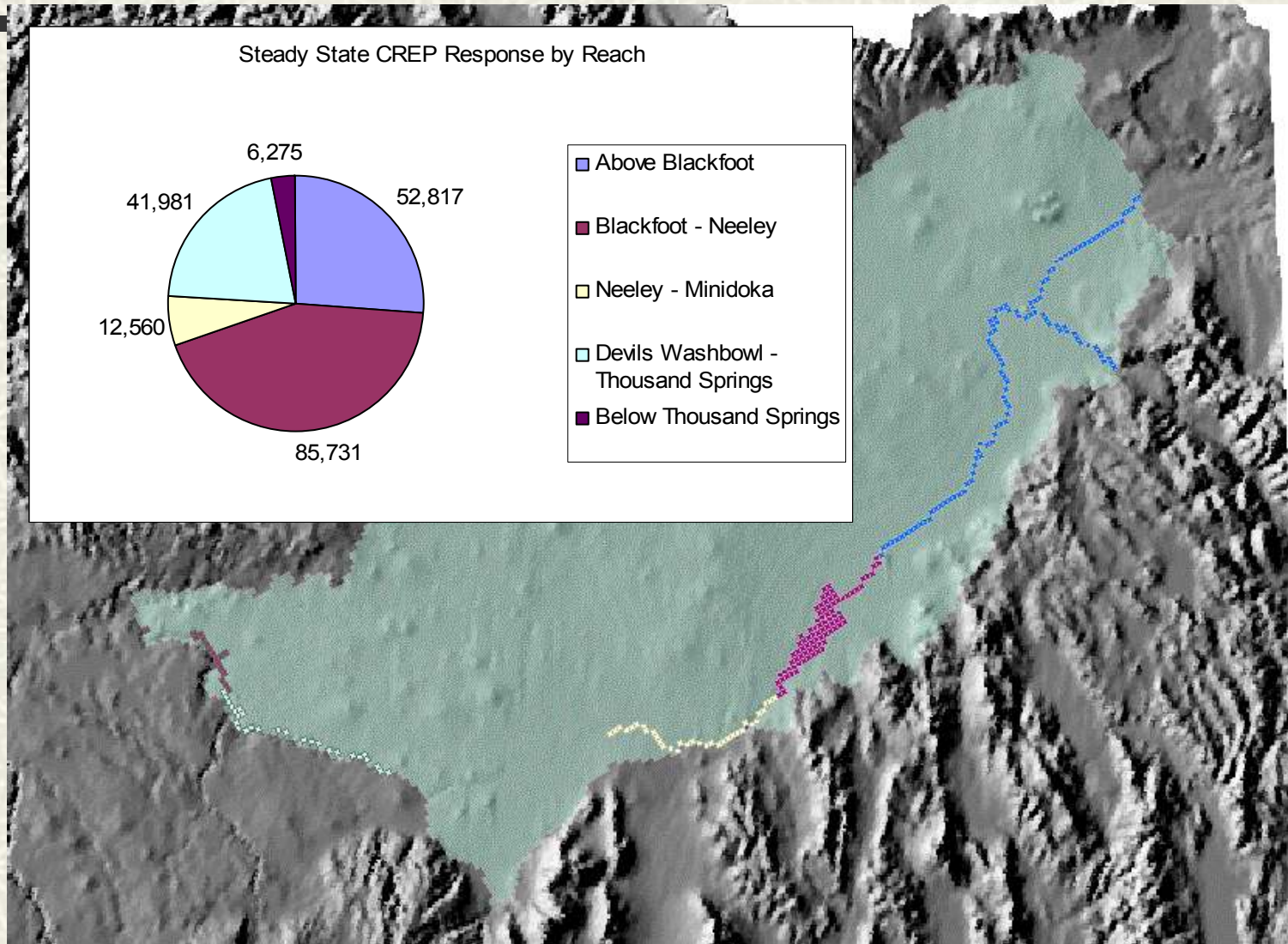
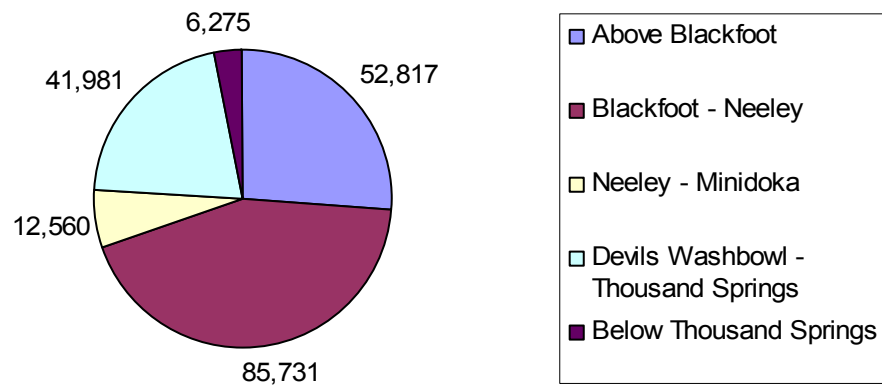
Jerome - 8,297

Lincoln - 4,678

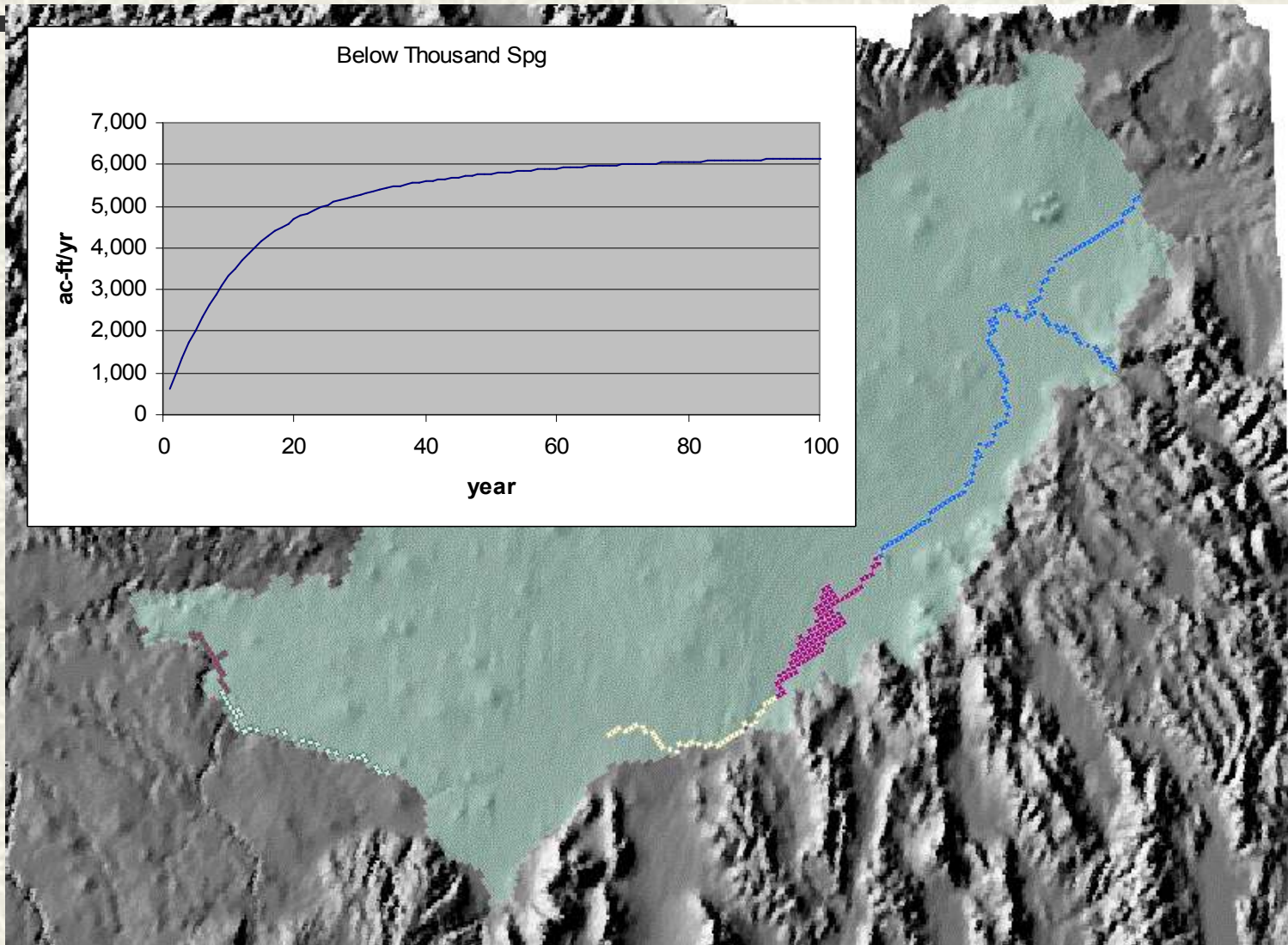
Minidoka - 25,582

CREP Conversions

Steady State CREP Response by Reach



CREP Conversions

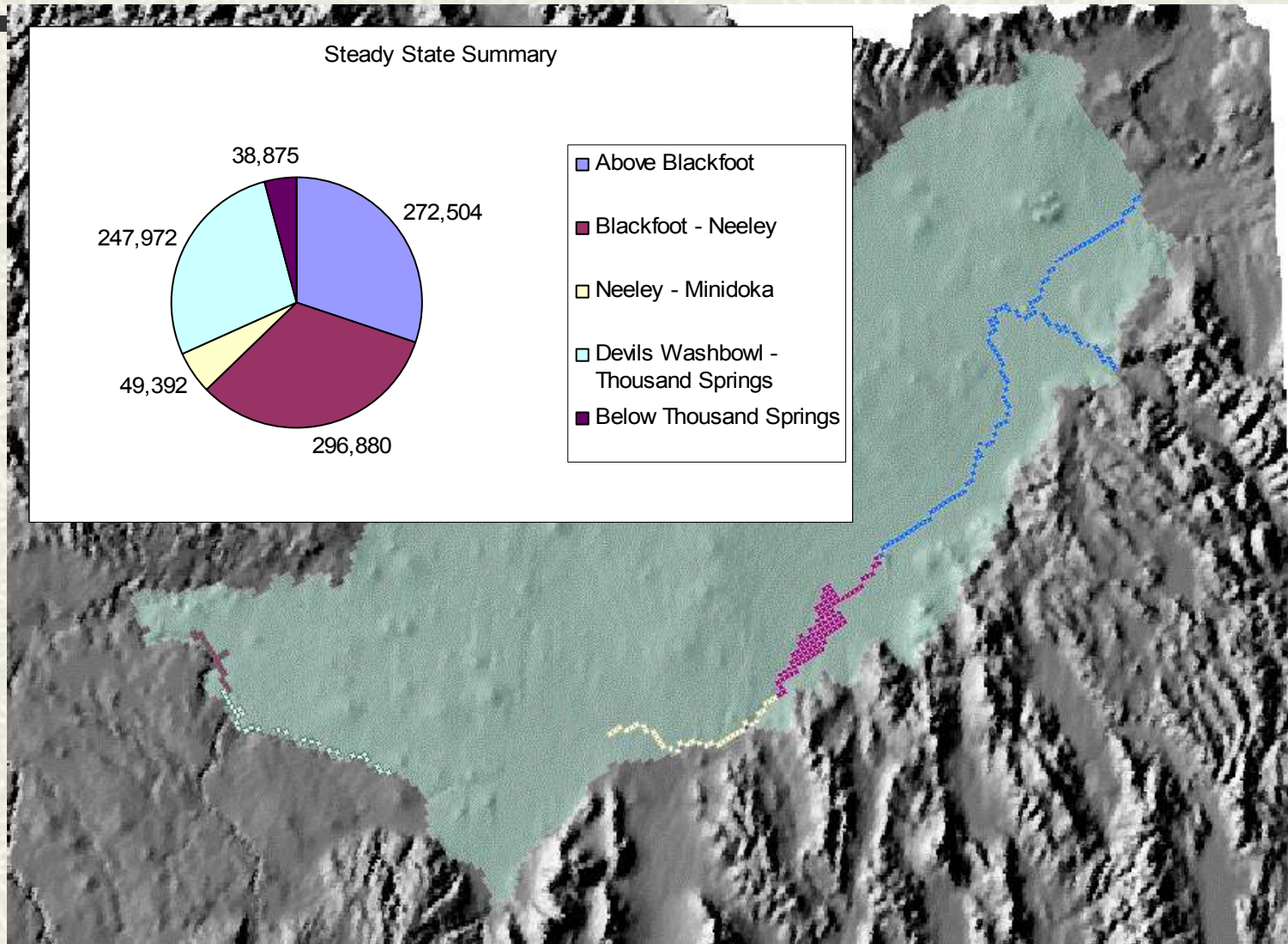
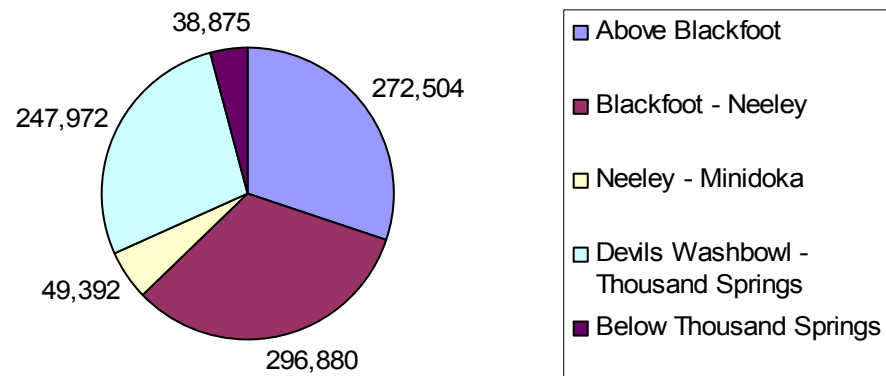


Summary

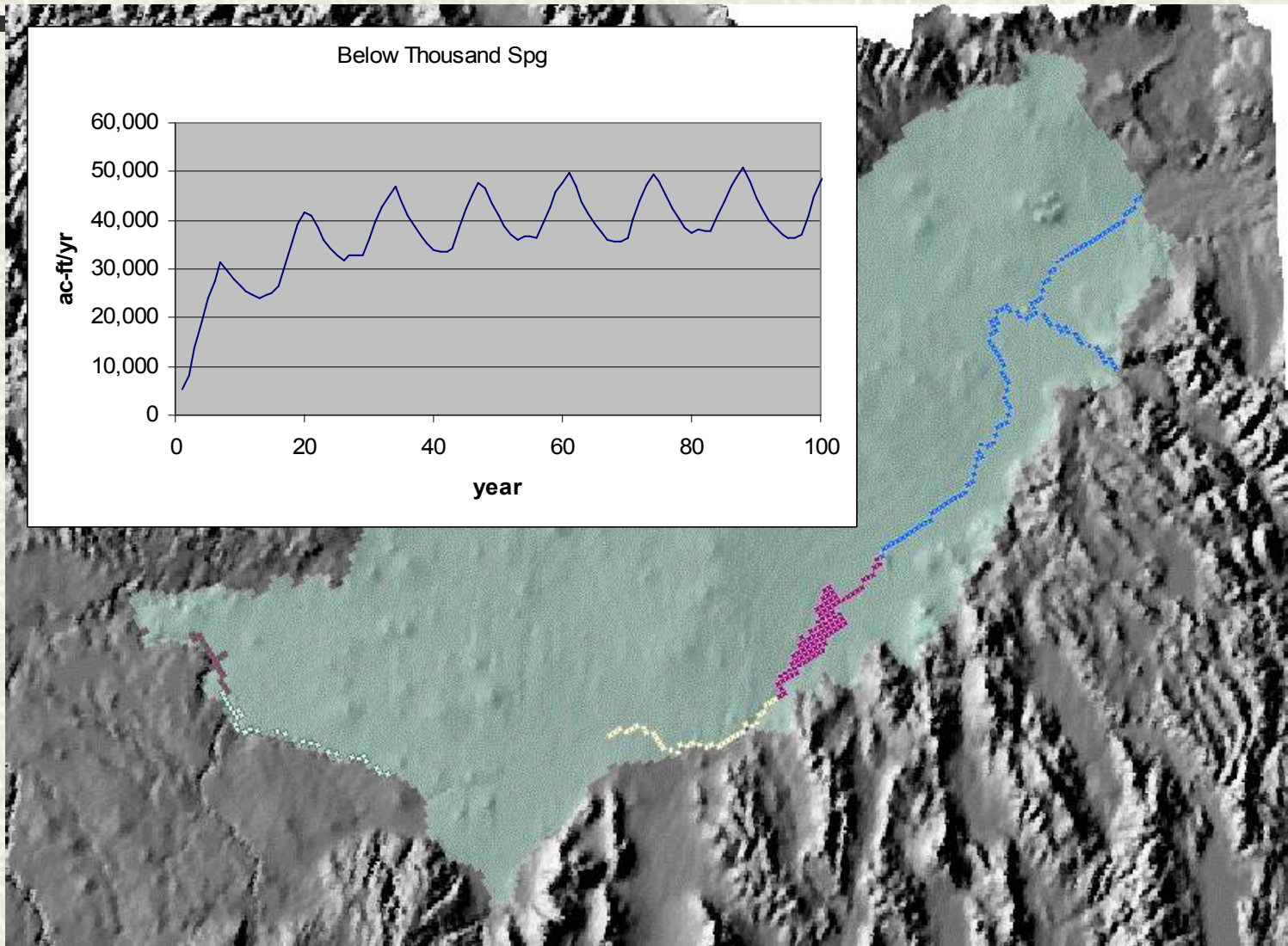
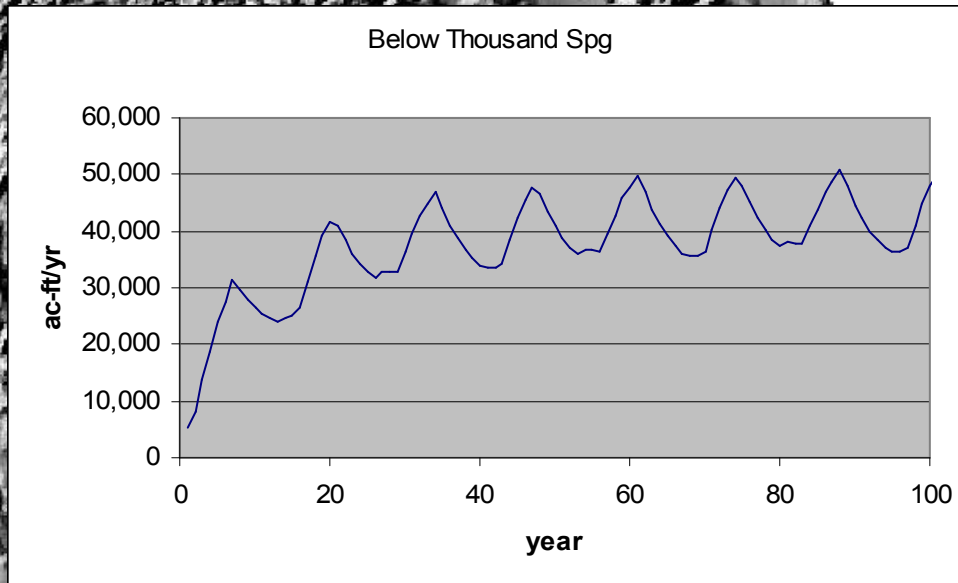
- # Managed Recharge
 - # Hard Conversions
 - Converting lands without a surface water right to surface water
 - # Soft Conversions
 - Providing lands with both surface and ground water rights more surface water
 - # CREP
 - Interpret this as any reduction in depletions
-

Summary

Steady State Summary



Summary





End

