

RECLAMATION

Managing Water in the West

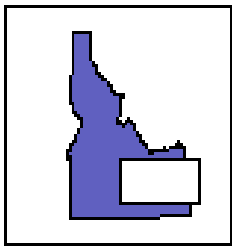
Idaho Water Supply Committee Meeting

Upper Snake Reservoir Operations
January 9, 2015

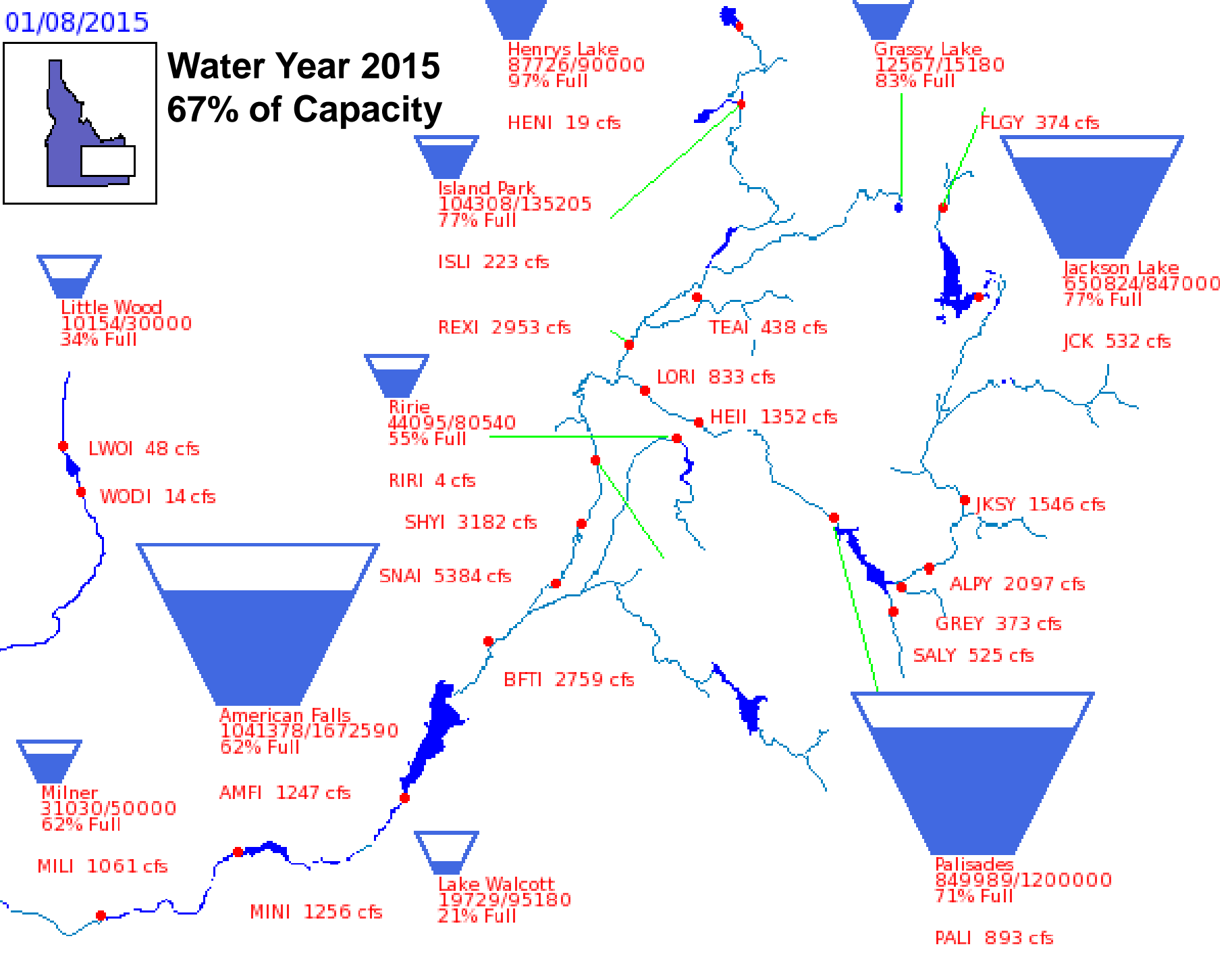


U.S. Department of the Interior
Bureau of Reclamation

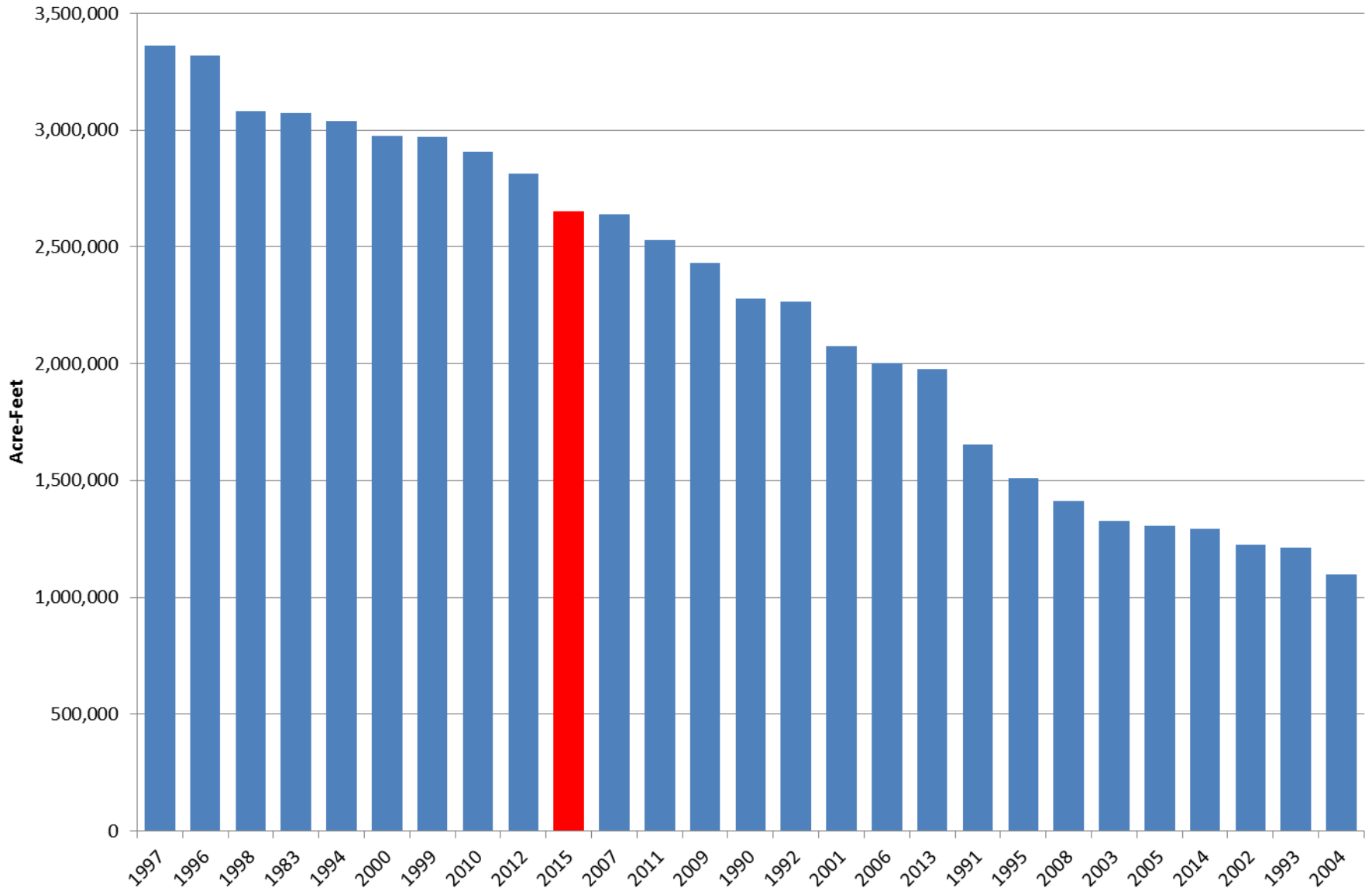
01/08/2015



Water Year 2015 67% of Capacity

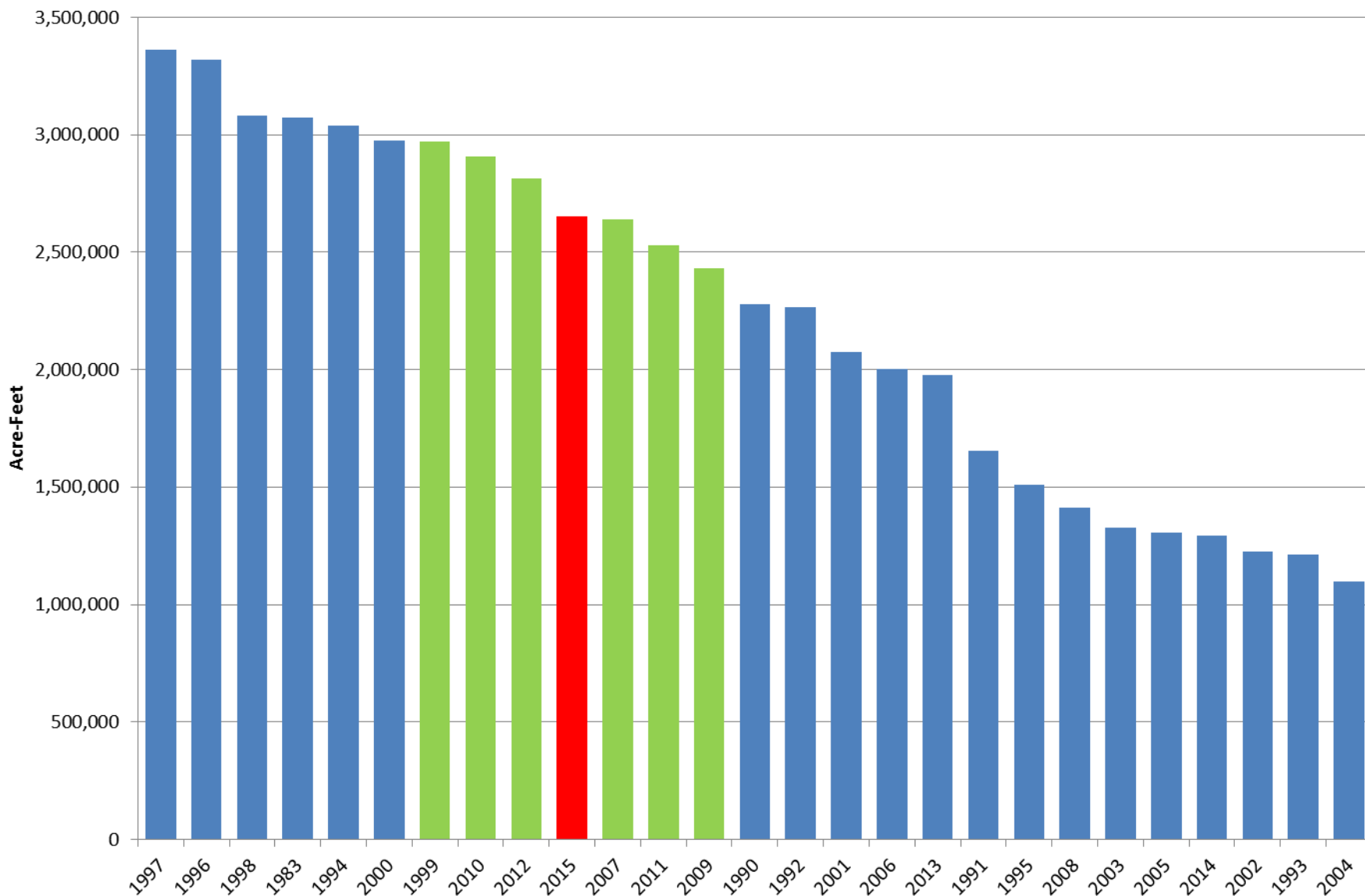


Upper Snake January 1st System Storage (1990-2015)



RECLAMATION

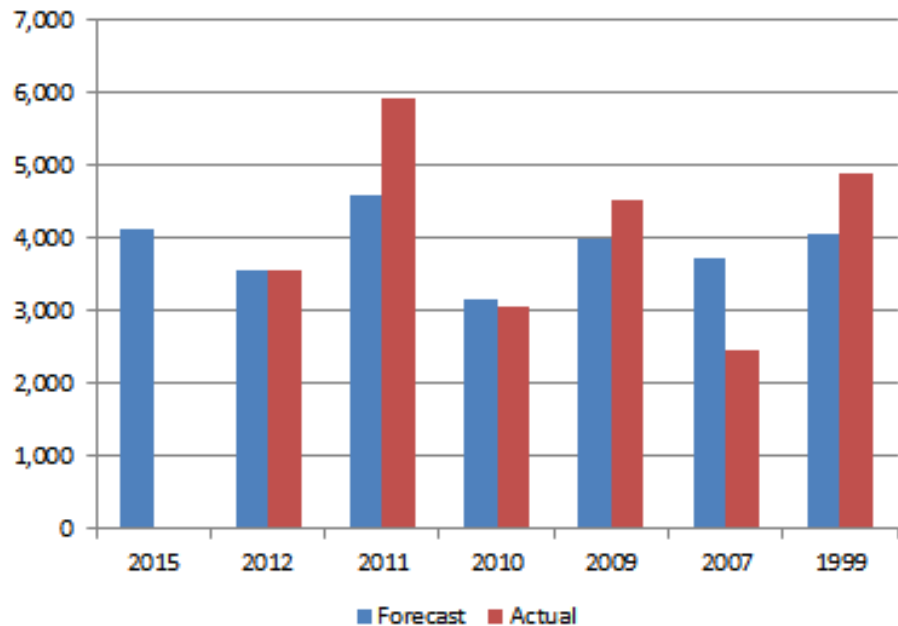
Upper Snake January 1st System Storage (1990-2015)



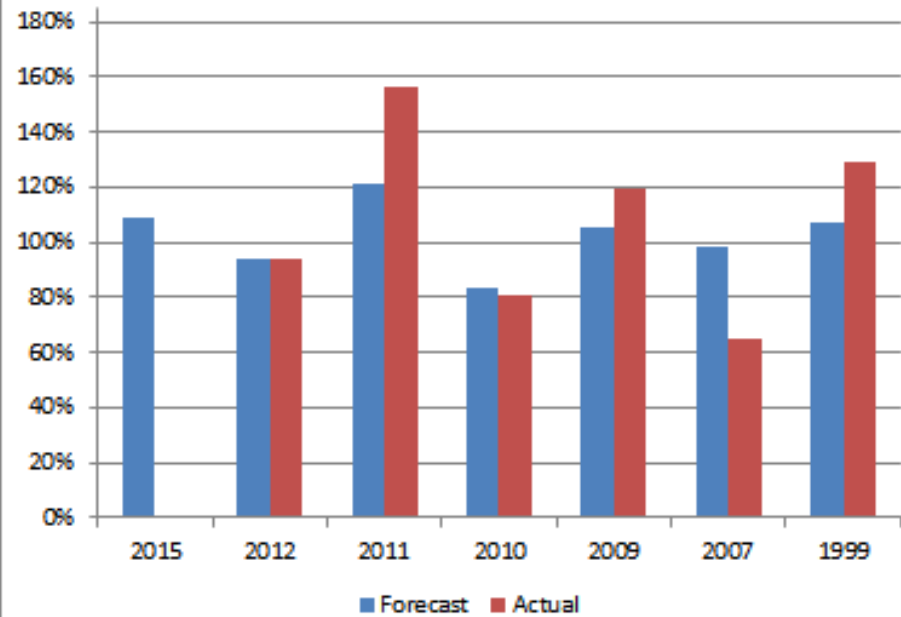
RECLAMATION

January - July Coordinated Forecast Analysis

Volume (KAF)



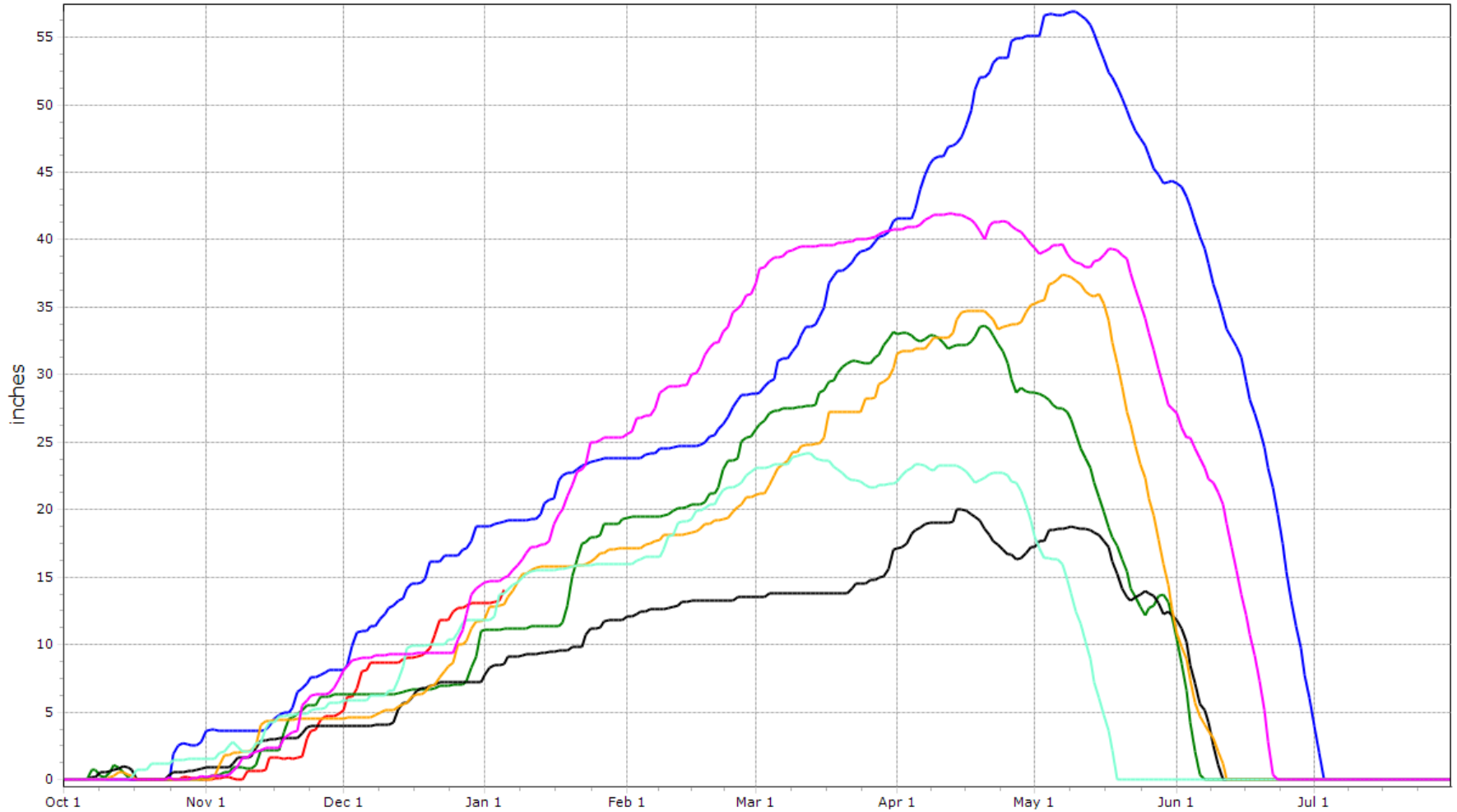
Percent of Average



- **2015 January Coordinated Forecast 109% of Average (4,130 KAF)**

LEWIS LAKE DIVIDE

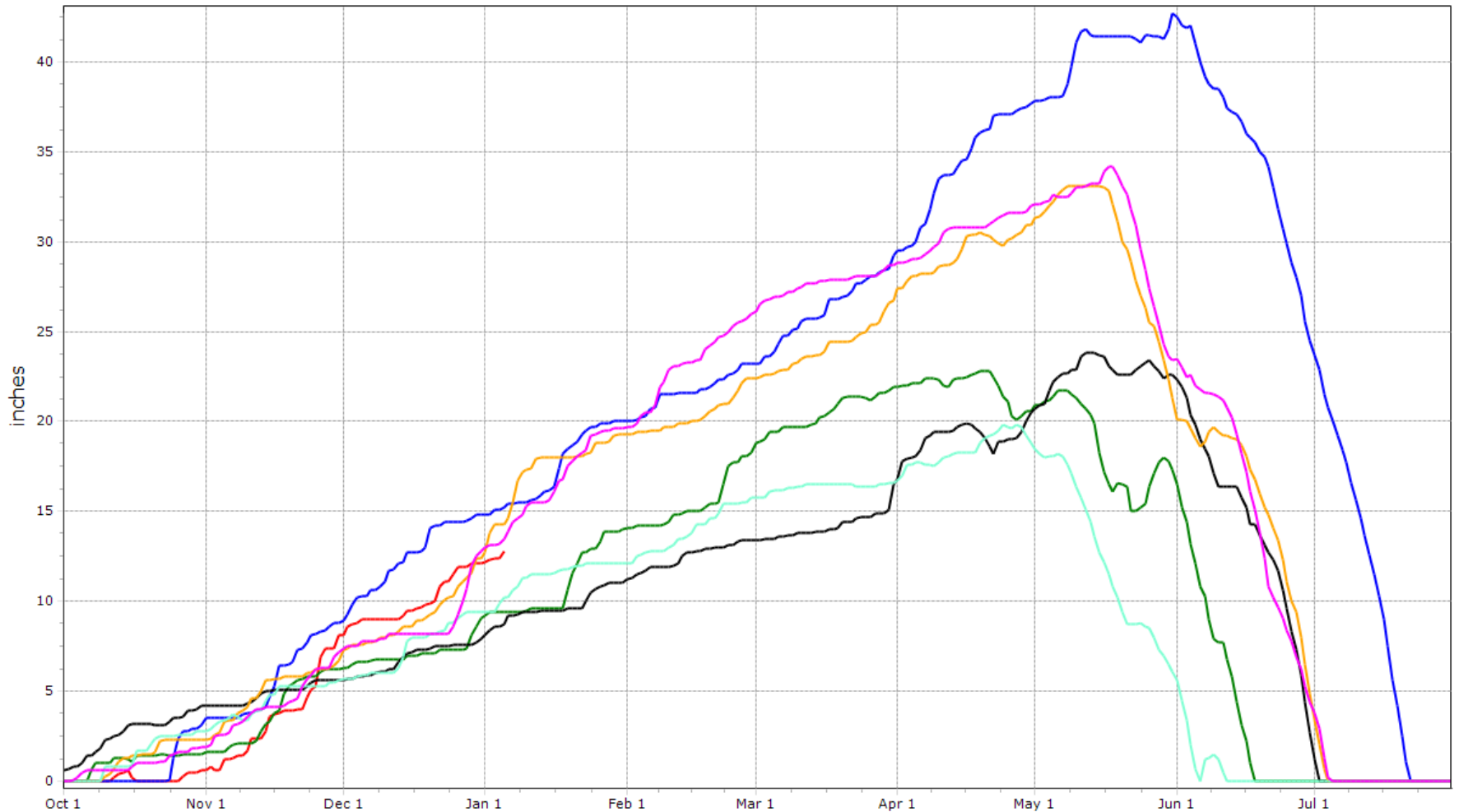
2015 2012 2011 2010 2009 2007 1999



RECLAMATION

TOGWOTEE PASS

2015 2012 2011 2010 2009 2007 1999

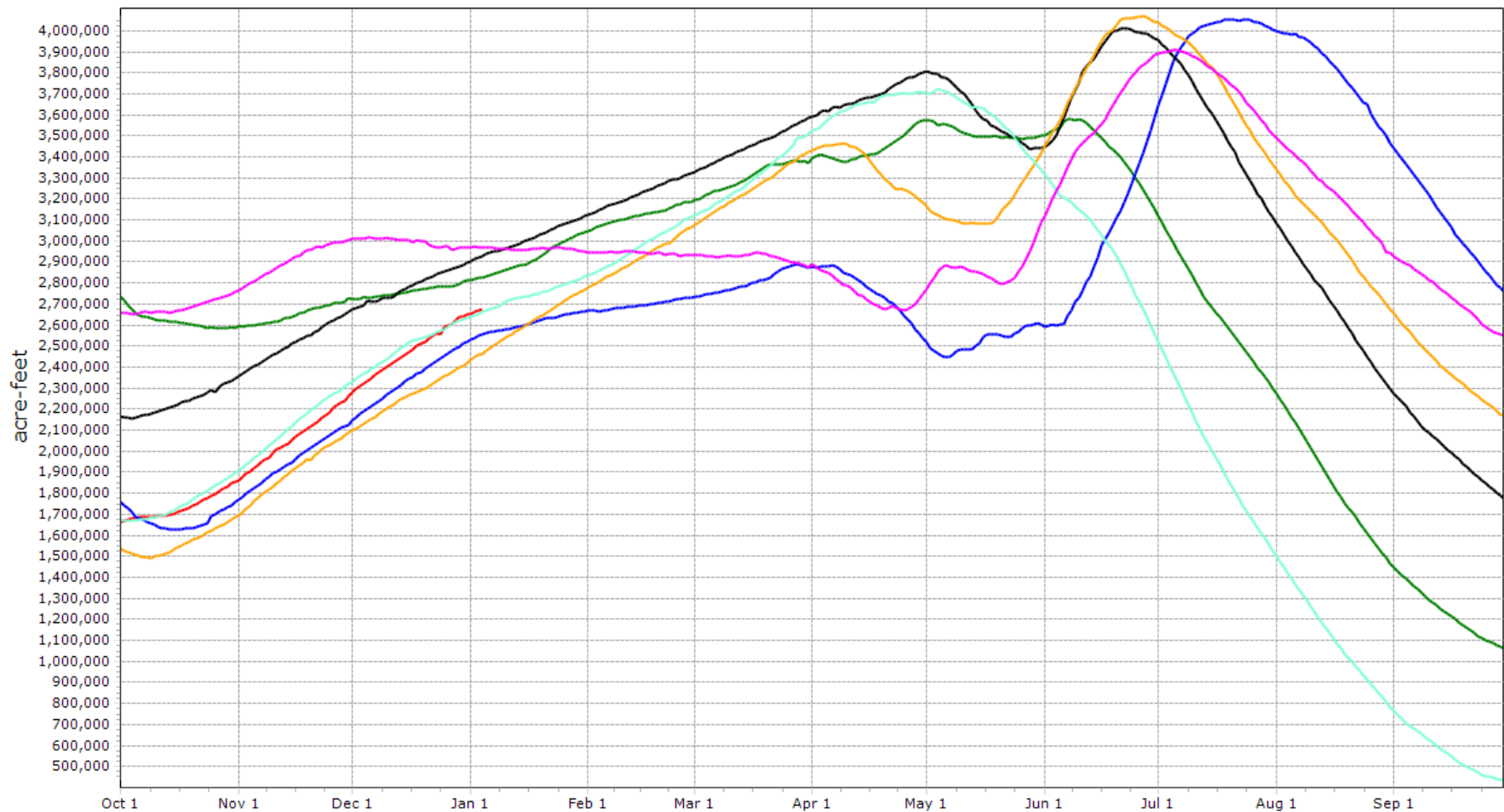


RECLAMATION

Upper Snake System Storage

(4,045,695 Acre-Feet Capacity)

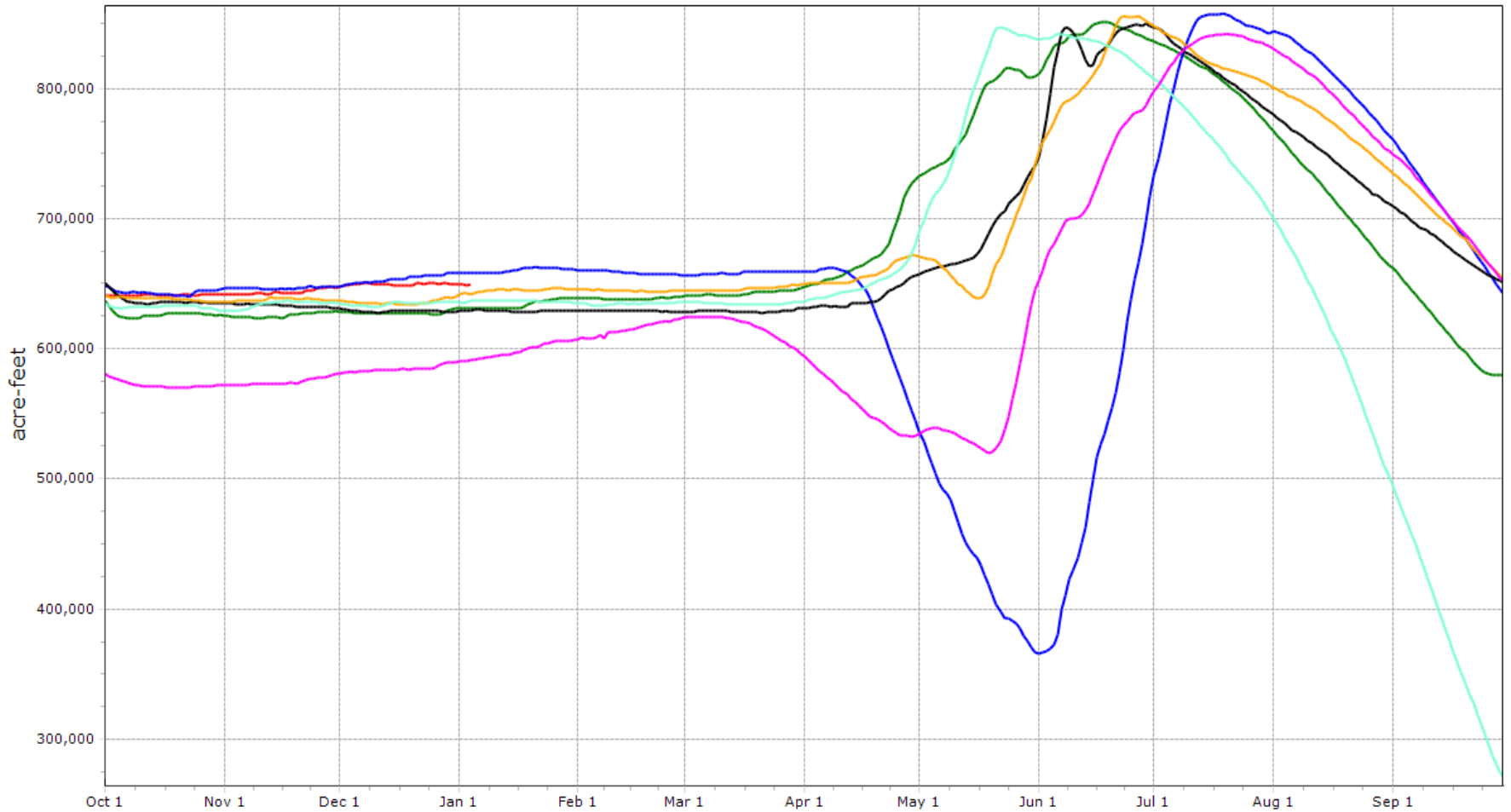
2015 2012 2011 2010 2009 2007 1999



Jackson Lake Storage

(847,000 Acre-Feet Capacity)

2015 2012 2011 2010 2009 2007 1999

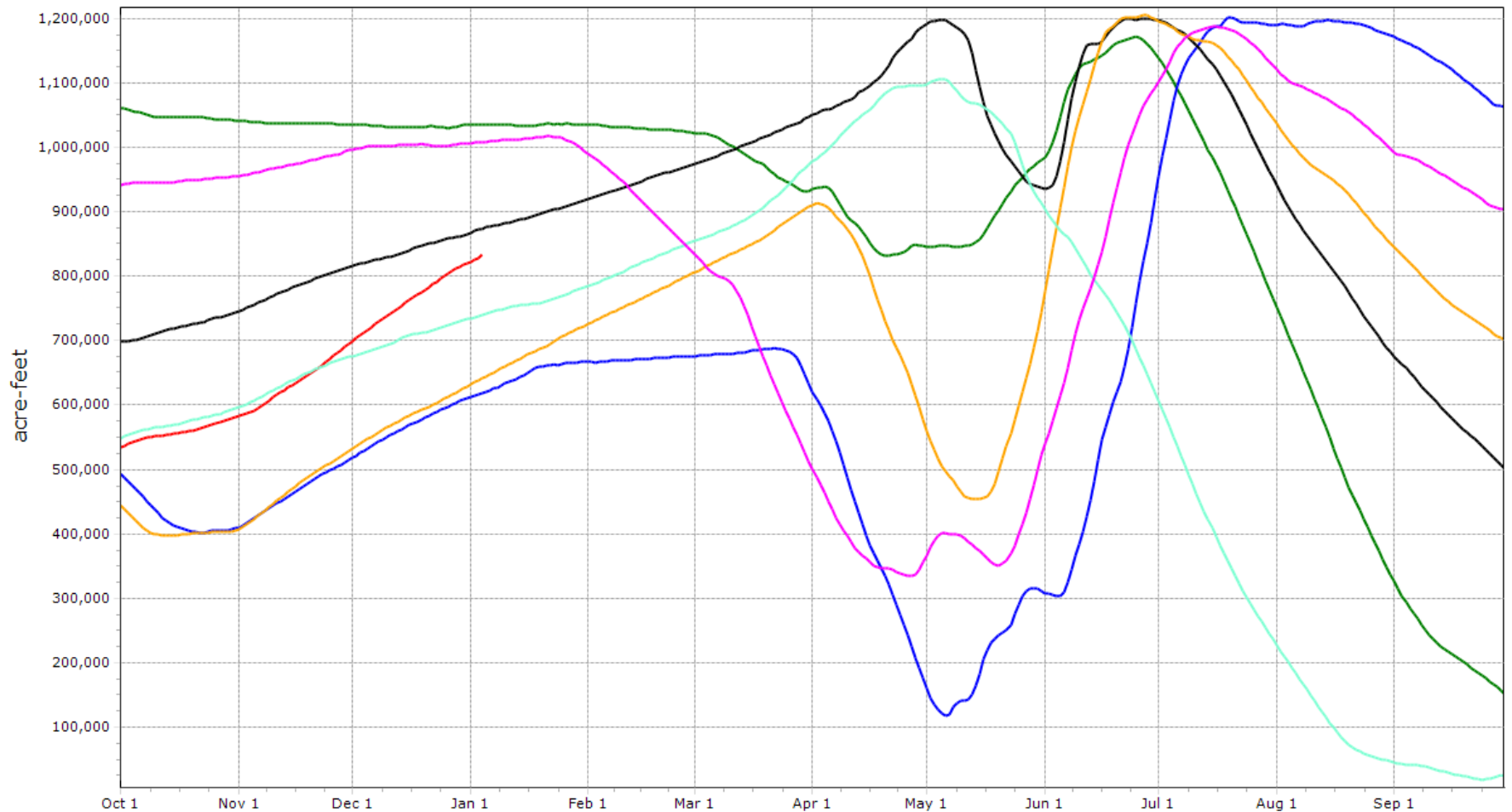


RECLAMATION

Palisades Storage

(1,200,000 Acre-Feet Capacity)

2015 2012 2011 2010 2009 2007 1999

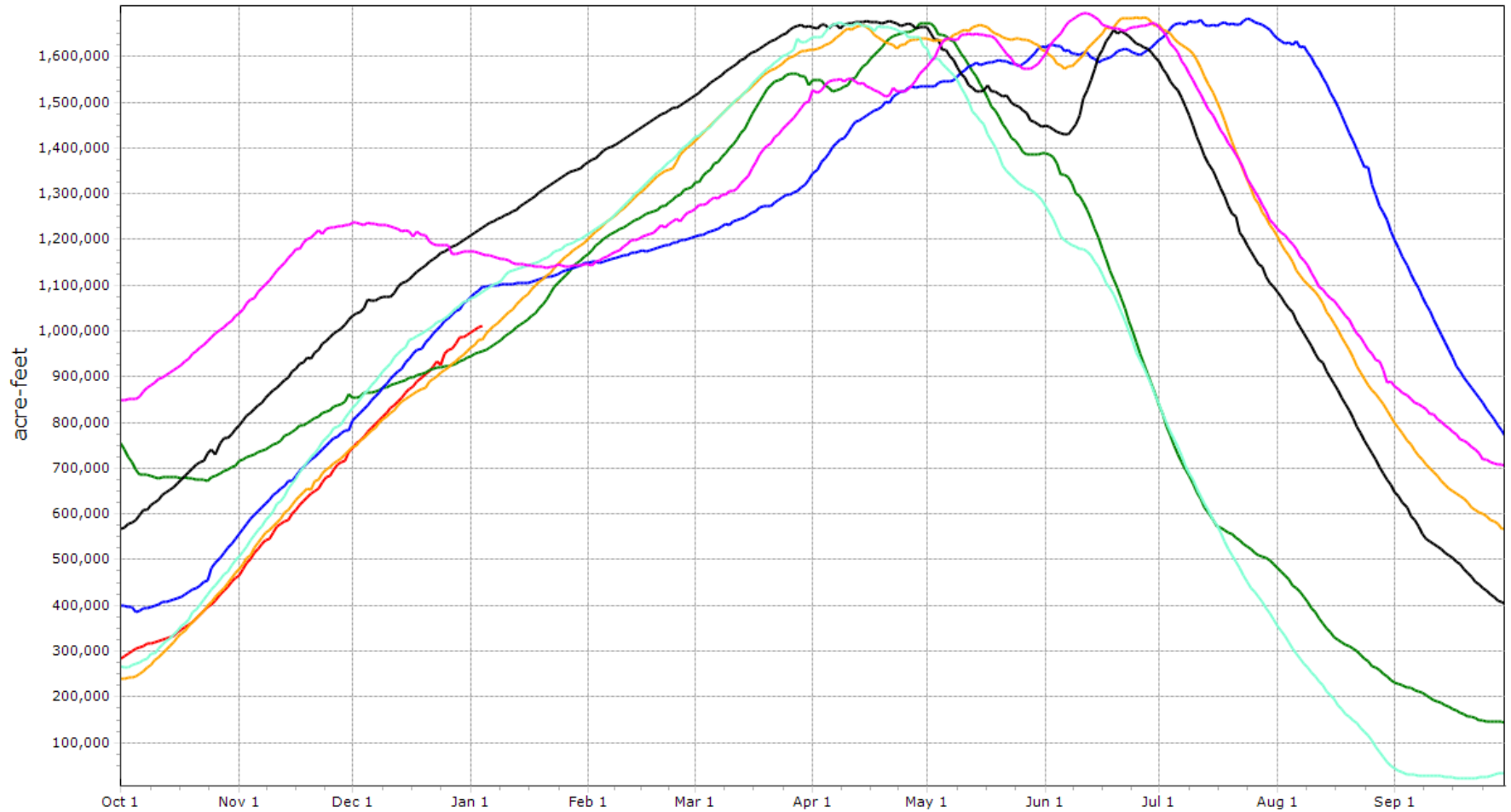


RECLAMATION

American Falls Storage

(1,672,590 Acre-Feet Capacity)

2015 2012 2011 2010 2009 2007 1999



RECLAMATION

Conclusions

- **System Storage Remains High**
- **Snow Accumulation Above Average**
 - Coordinated Forecast 109%
- **Still early in the snow accumulation season**
- **Possibility of flood control releases later in the season**
- **No plan for operational changes**