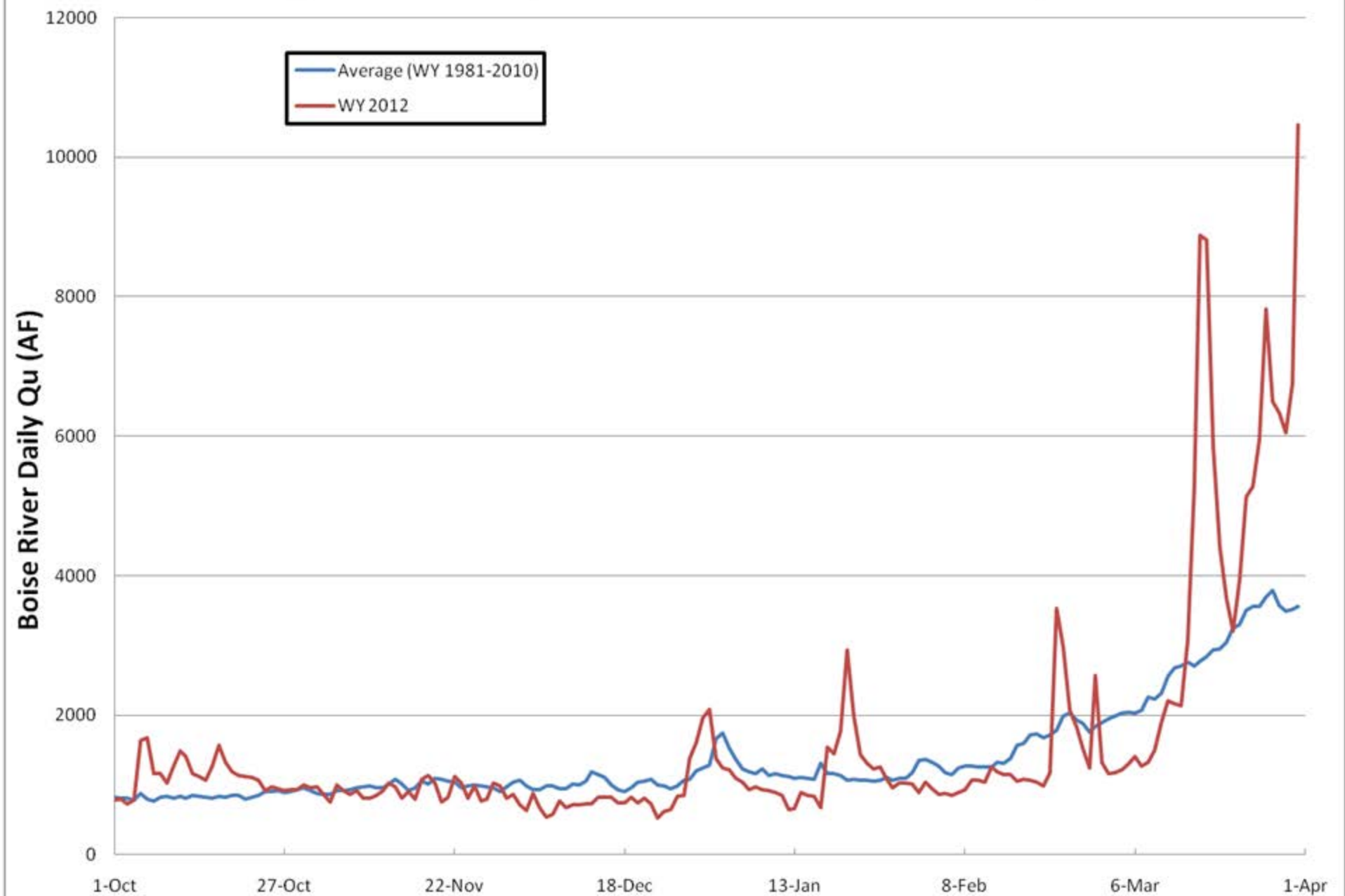


Boise River 2nd Qtr forecast review for the BSU Experimental Streamflow Forecasting (ESF) technique

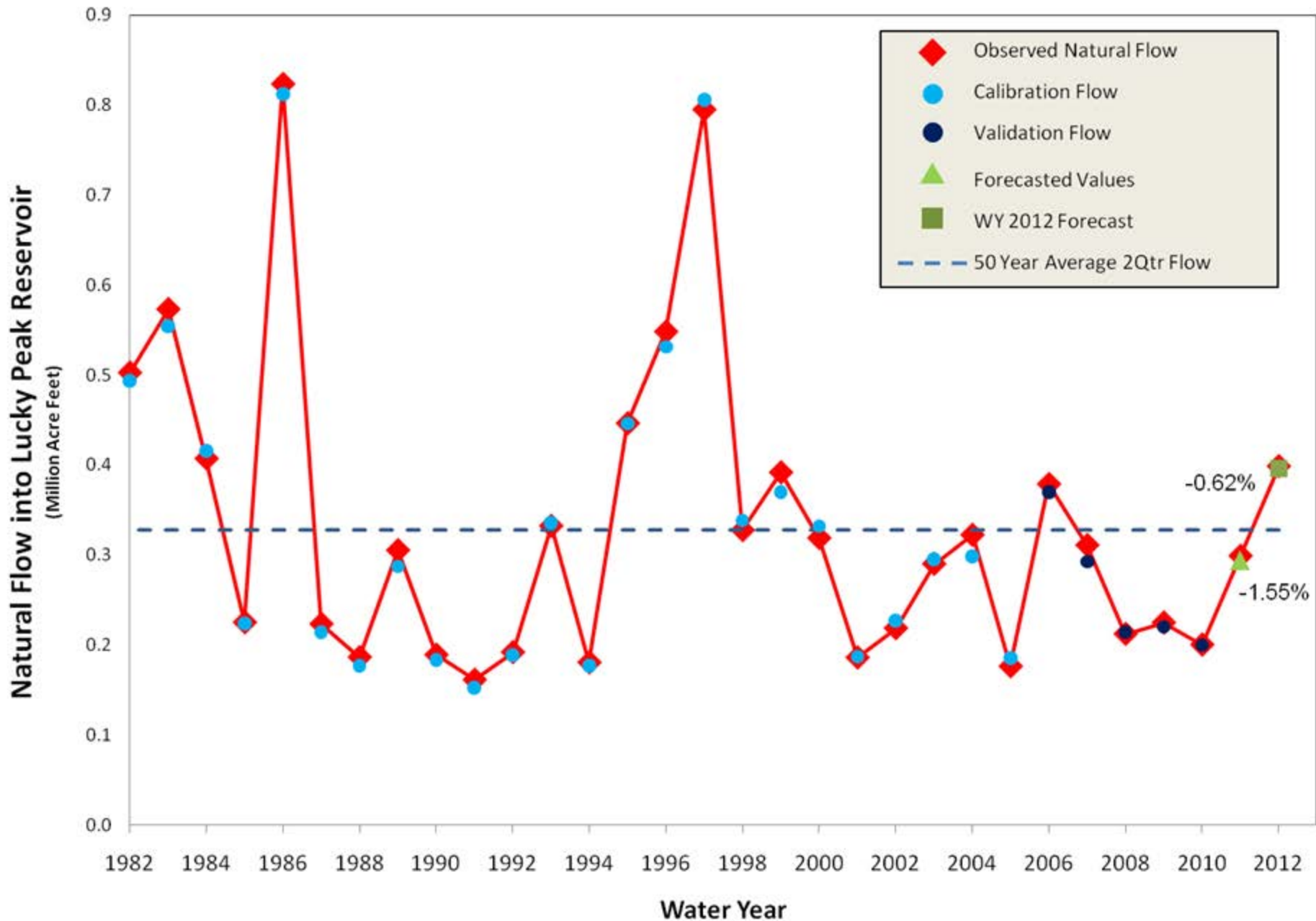
Mel Kunkel



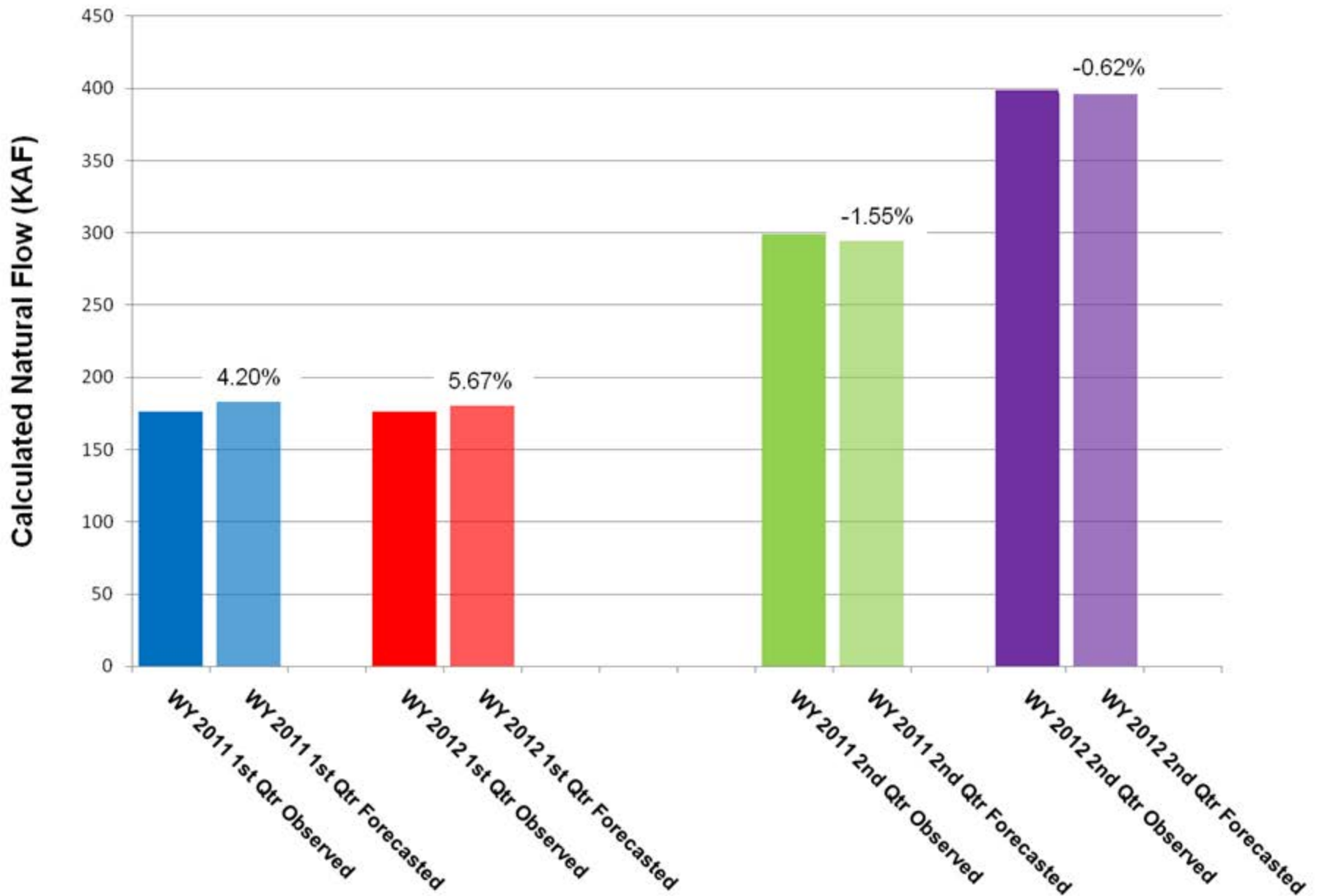
Average 1st and 2nd Qtr Flows vs WY 2012 1st and 2nd Qtr Flow



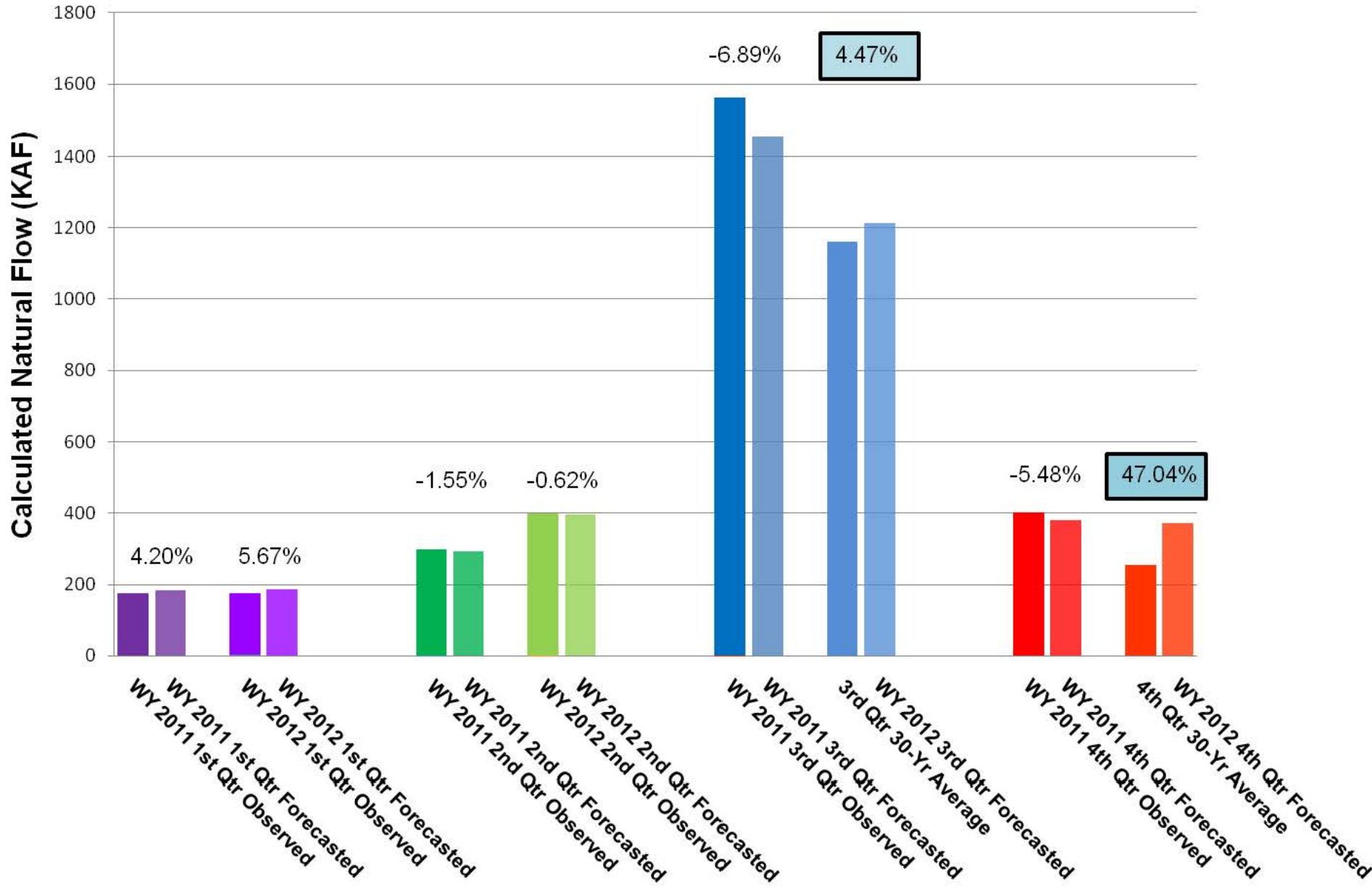
Lucky Peak Second Quarter Natural Flow / Observed Vs Predicted



WY 2011 and 2012 1st and 2nd Qtr Observed vs Forecasted Flows Boise River @ Lucky Peak Calculated Natural Flow



WY 2011 and 2012 Observed/Average vs Forecasted Flows Boise River @ Lucky Peak Calculated Natural Flow



What about WY 2013?

What about WY 2013?

If I have the opportunity to develop a Boise River forecast for WY 2013 using the BSU/ESF, would you the water managers and users prefer**:

- Quarterly forecasts out to 18-months?

or

- Bi-monthly forecast out to 12-months?

** If I can maintain the same level of error!!!

THANKS!!