



State of Idaho

DEPARTMENT OF WATER RESOURCES

322 East Front Street, P.O. Box 83720, Boise, ID 83720-0098
Phone: (208) 287-4800 Fax: (208) 287-6700 Web Site: www.idwr.idaho.gov.

DIRK KEMPTHORNE
Governor

KARL J. DREHER
Director

Date: April 3, 2006
To: Distribution List
From: Lin Campbell, IDWR Technical Hydrogeologist
Subject: Summary of year **2004** detections of concern
Statewide Ambient Ground Water Quality Monitoring Program

An Excel spreadsheet containing Statewide Program detections of concern, sorted by county and well location, along with figures showing the locations of sites where constituents of concern were detected are attached. The spreadsheet lists sites where a constituent was detected above a maximum contaminant level (MCL), or where volatile organic compounds (VOC), pesticides, or household products were detected at any concentration. All previous sample detections for the constituents exceeding an MCL are provided for historical perspective. VOCs and pesticides previously detected at a site also are included in the spreadsheet. Wells having one or more detections are shown on the maps with a pie-chart symbol. The sections of the pie charts only indicate that a particular category of constituent was detected but do not convey any indication of the concentration of a constituent.

The Statewide Program collected samples from 396 sites during the summer of 2004. These sites include 16 new sites that were sampled for the first time. Water samples from all sites were tested for inorganic compounds and field parameters (temperature, pH, specific conductance, dissolved oxygen, and alkalinity), and pesticides by immunoassay. Arsenic speciation analyses were performed on samples with total arsenic levels over 10 ug/L.

Detections of concern were found in samples from 121 sites. One or more constituents above an MCL (excluding radioactivity) were detected at 67 sites. Arsenic (63 sites), nitrate (20 sites), fecal coliform (5 sites), fluoride (3 sites), selenium (1 site) and 1,2-dibromoethane (1 site) were the constituents measured above their respective MCL.

Water samples from 40 wells were analyzed using the USGS Schedule 1433 lab method for constituents commonly found in household and industrial wastewater including sex and steroidal hormones, topical disinfectants, cleaning chemicals, pesticides, and chlorinated solvents. Phenol, an ingredient in disinfectants, antiseptics, and medicinal preparations such as mouthwash and throat lozenges, was detected in 22 of the 40 wells. Other compounds detected include benzophenone (1 site), bromacil (6 sites), caffeine (1 site), d-limonene (1 site), tetrachloroethene, (1 site), and tris(2-butoxyethyl)phosphate (1 site). Detections of these compounds are identified as household products on the legends of the attached maps. The owner report from a site tested for household products are attached to show the constituents included in the analyses.

Water samples from 65 sites were tested for radioactivity. Thirteen sites contained adjusted gross alpha activity¹ above the MCL of 15 pCi/L.

VOC analyses were limited to new sites and sites with previous VOC detections. VOCs detected include 1,1-dichloroethylene, 1,1,1-trichloroethane, 1,2-dibromoethane (EDB), 1,2-dichloropropane, chloroform, tetrachloroethylene, and trichloroethylene. The complete VOC analysis list is shown on the attached owner report.

With the exception of adjusted gross alpha activity, notification was sent to the well owner when an existing MCL was exceeded. Otherwise, the well owner was notified of the detection at the time of mass notification (all data sent to well owners) in April 2005.

If you have questions regarding specific areas of the state, please contact our staff at waterquality@idwr.idaho.gov.

¹ Total gross alpha activity can be determined by speciating the sample for uranium and radium and subtracting the results from the total gross alpha activity. Previous statewide program results indicate the adjusted alpha activity is approximately 69% of the total gross alpha activity. This factor was used to estimate an adjusted alpha activity.

**Idaho Department of Water Resources
Statewide Ground Water Quality Monitoring Program**

Sample Results

Site ID #####	Station Name #####	Sample Date & Time August 13, 2004 1:50 PM	Sample ID GWQM-2004-309
-------------------------	------------------------------	--	-----------------------------------

Well Data

County Ada	Latitude 43.72491437	Longitude -116.361986	Altitude 2660 ft
Water Use Domestic		Well Depth 128 ft	Casing Depth 128 ft

Inorganics and Field Analysis

32.5 °C Air Temperature	130 mg/L Alkalinity	<0.04 mg/L Ammonia
11 ug/L Arsenate	10.6 ug/L Arsenic	<0.1 ug/L Arsenite
	MCL 10 ug/L EXCEEDED	
36.6 ug/L Barium	159 mg/L Bicarbonate	<0.037 ug/L Cadmium
30.6 mg/L Calcium	0 mg/L Carbonate	3.54 mg/L Chloride
<0.1 ug/L Disodium Methyl Arsonate	8.1 mg/L Dissolved Oxygen	<1 col/100 ml Fecal Coliform
0.21 mg/L Fluoride	110 mg/L Hardness	<8 ug/L Iron
7.45 mg/L Magnesium	<0.4 ug/L Manganese	<0.1 ug/L Monosodium Methyl Arsonate
		7.2 pH
2.24 mg/L Nitrate	<0.008 mg/L Nitrite	<0.5 ug/L Selenium
0.14 mg/L Phosphorus	2.3 mg/L Potassium	0.28 t/af Solids
44 mg/L Silica	23.5 mg/L Sodium	14 °C Water Temperature
292 uS/cm Specific Conductance	7.41 mg/L Sulfate	

Hormones by Immunoassay

ND ug/L Estradiol

Industrial and Household Wastewater Products

<0.5 ug/l 1,4-Dichlorobenzene	<0.5 ug/l 1-Methylnaphthalene	<0.5 ug/l 2,6-Dimethylnaphthalene
<0.5 ug/l 2-Methylnaphthalene	<1 ug/l 3-Methyl-1H-indole	<5 ug/l 3-tert-Butyl-4-hydroxy-anisole
<1 ug/l 4-Cumylphenol	<5 ug/l 4-Nonylphenol	<1 ug/l 4-Octylphenol
<1 ug/l 4-tert-Octylphenol	<2 ug/l 5-Methyl-1H-benzotriazole	<0.5 ug/l 9,10-Anthraquinone
<0.5 ug/l Acetophenone	<0.5 ug/l Acetyl hexamethyl-tetrahydronaphthalene	<0.5 ug/l Anthracene
<0.5 ug/l Benzo[a]pyrene	<0.5 ug/l Benzophenone	<1 ug/l Bisphenol A
<0.5 ug/l Bromacil	<0.5 ug/l Caffeine	<0.5 ug/l Camphor
<1 ug/l Carbaryl	<0.5 ug/l Carbazole	<0.5 ug/l Chlorpyrifos
<1 ug/l Cotinine	<0.5 ug/l DEET	<0.5 ug/l Diazinon
<1 ug/l Dichlorvos	<5 ug/l Diethoxynonylphenol	<1 ug/l Diethoxyoctylphenol
<0.5 ug/l D-Limonene	<1 ug/l Ethoxyoctylphenol	<0.5 ug/l Fluoranthene
<0.5 ug/l Hexahydrohexamethyl-cyclopentabenzopyran	<0.5 ug/l Indole	<0.5 ug/l Isoborneol
<0.5 ug/l Isophorone	<0.5 ug/l Isopropylbenzene	<0.5 ug/l Isoquinoline
<0.5 ug/l Menthol	<0.5 ug/l Metalaxyl	<0.5 ug/l Methyl salicylate
<0.5 ug/l Metolachlor	<0.5 ug/l Naphthalene	<1 ug/l p-Cresol
<2 ug/l Pentachlorophenol	<0.5 ug/l Phenanthrene	E0.4 ug/l Phenol
<0.5 ug/l Prometon	<0.5 ug/l Pyrene	<0.5 ug/l Tetrachloroethene
<0.5 ug/l Tribromomethane	<0.5 ug/l Tributyl phosphate	<1 ug/l Triclosan
<0.5 ug/l Triethyl citrate	<0.5 ug/l Triphenyl phosphate	<0.5 ug/l Tris(2-butoxyethyl) phosphate
<0.5 ug/l Tris(2-chloroethyl) phosphate	<0.5 ug/l Tris(dichloroisopropyl) phosphate	

**Idaho Department of Water Resources
Statewide Ground Water Quality Monitoring Program**

Sample Results

Site ID
#####

Station Name
#####

Sample Date & Time
August 13, 2004 1:50 PM

Sample ID
GWQM-2004-309

Volatile Organic Compounds

<0.5 ug/L Benzene	<0.5 ug/L Bromobenzene	<0.5 ug/L Bromochloromethane
<0.5 ug/L Bromoform	<0.5 ug/L Bromomethane	<0.5 ug/L Carbon Tetrachloride
<0.5 ug/L Chlorobenzene	<0.5 ug/L Chlorobenzene-2,methyl-1	<0.5 ug/L Chloroethane
<0.5 ug/L Chloroform	<0.5 ug/L Chloromethane	<0.5 ug/L Chlorotoluene-p
<0.5 ug/L Dibromochloromethane	<0.5 ug/L Dibromochloropropane (DBCP)	<0.2 ug/L Dibromoethane,1,2- (EDB)
<0.5 ug/L Dibromomethane	<0.5 ug/L Dichlorobenzene,1,2-	<0.5 ug/L Dichlorobenzene,1,3-
<0.5 ug/L Dichlorobenzene,1,4-	<0.5 ug/L Dichlorobromomethane	<0.5 ug/L Dichlorodifluoromethane
<0.5 ug/L Dichloroethane,1,1-	<0.5 ug/L Dichloroethane,1,2-	0.59 ug/L Dichloroethene,1,1-
<0.5 ug/L Dichloroethene,1,2,cis-	<0.5 ug/L Dichloroethene,1,2,trans-	<0.5 ug/L Dichloropropane,1,2-
<0.5 ug/L Dichloropropane,1,3-	<0.5 ug/L Dichloropropane,2,2-	<0.5 ug/L Dichloropropene,1,1-
<0.5 ug/L Dichloropropene,e,z-1,3-	<0.5 ug/L Ethylbenzene	<0.5 ug/L Hexachlorobutadiene
<0.5 ug/L Isopropylbenzene	<0.5 ug/L Methyl tertiary butyl ether (MTBE)	<0.5 ug/L Methylene chloride
<0.5 ug/L Naphthalene	<0.5 ug/L n-Butylbenzene	<0.5 ug/L n-Propylbenzene
<0.5 ug/L p-Isopropyltoluene	<0.5 ug/L sec-Butylbenzene	<0.5 ug/L Styrene
<0.5 ug/L tert-Butylbenzene	<0.5 ug/L Tetrachloroethane,1,1,1,2-	<0.5 ug/L Tetrachloroethane,1,1,2,2-
<0.5 ug/L Tetrachloroethylene	<0.5 ug/L Toluene	<0.5 ug/L Trichlorobenzene,1,2,3-
<0.5 ug/L Trichlorobenzene,1,2,4-	0.82 ug/L Trichloroethane,1,1,1-	<0.5 ug/L Trichloroethane,1,1,2-
<0.5 ug/L Trichloroethylene	<0.5 ug/L Trichlorofluoromethane	<0.5 ug/L Trichloropropane,1,2,3-
<0.5 ug/L Trimethylbenzene,1,2,4-	<0.5 ug/L Trimethylbenzene,1,3,5-	<0.5 ug/L Vinyl chloride
<0.5 ug/L Xylene		

Pesticides by Immunoassay

ND ug/L Alachlor

ND ug/L Atrazine

ND ug/L Metolachlor

Sex and Steroidal Hormones

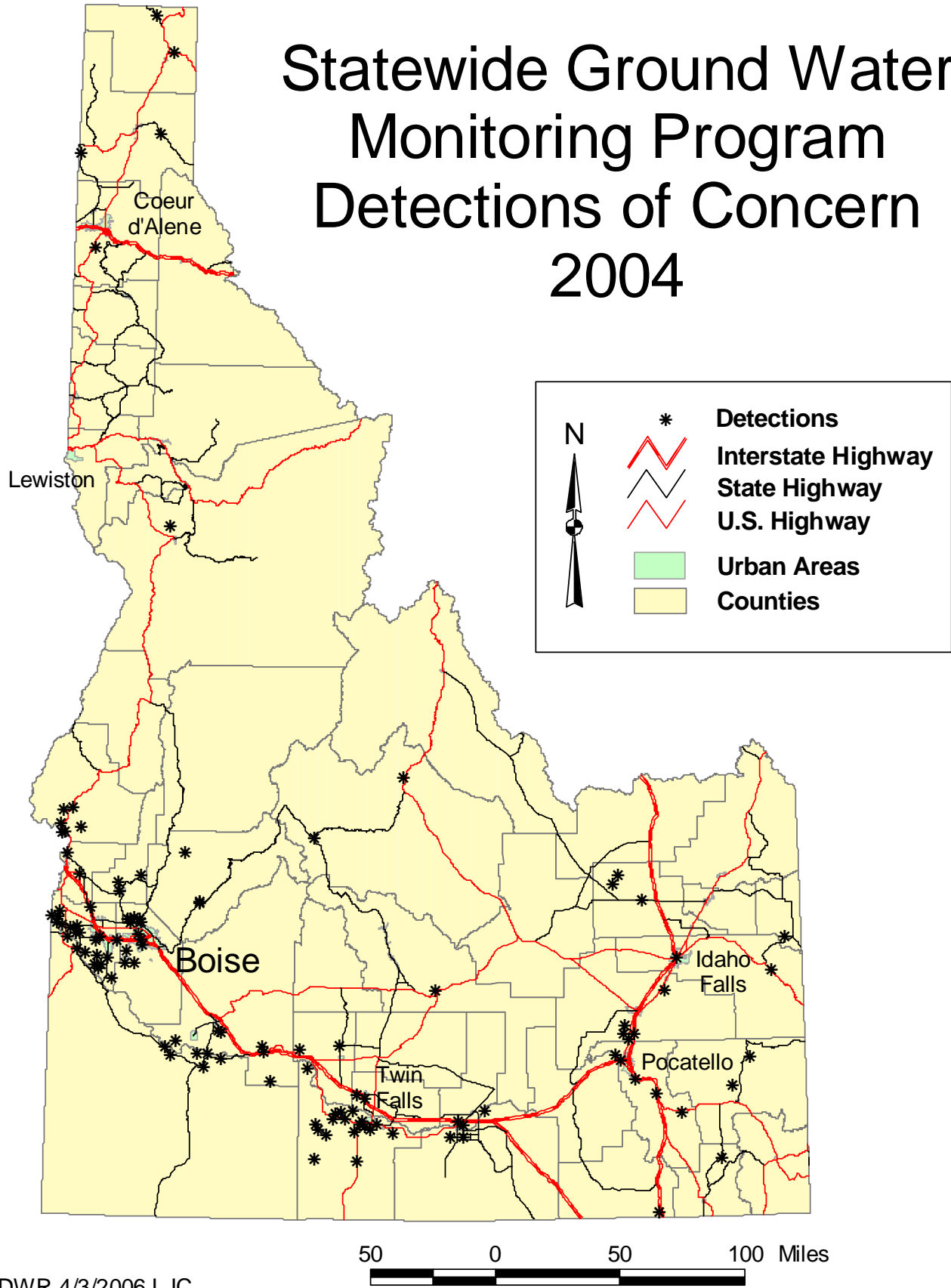
<2 ug/l 3-beta-Coprostanol

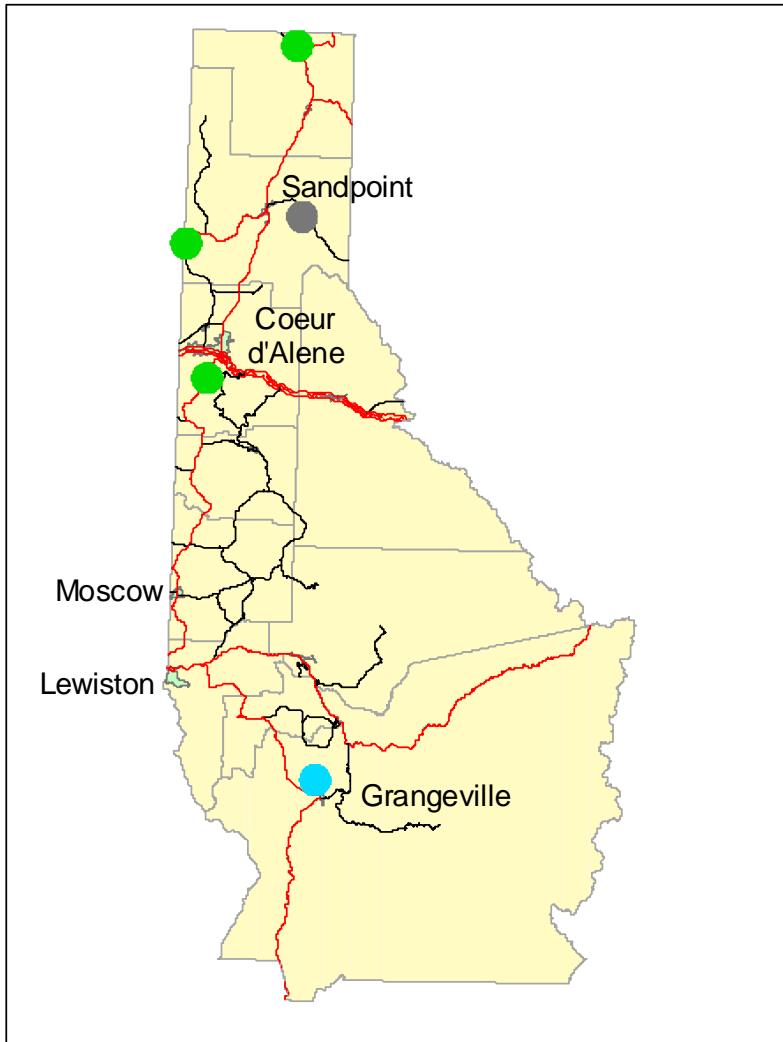
<2 ug/l beta-Sitosterol

<2 ug/l beta-Stigmastanol

<2 ug/l Cholesterol

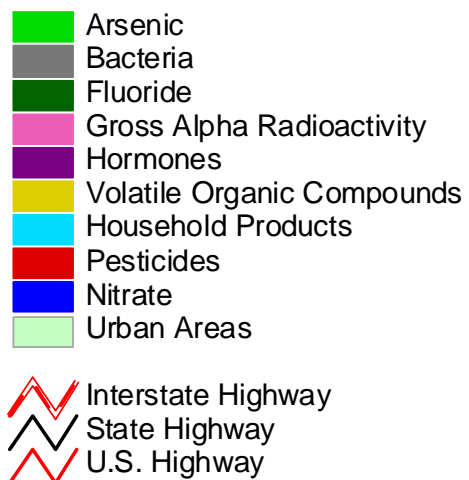
Statewide Ground Water Monitoring Program Detections of Concern 2004

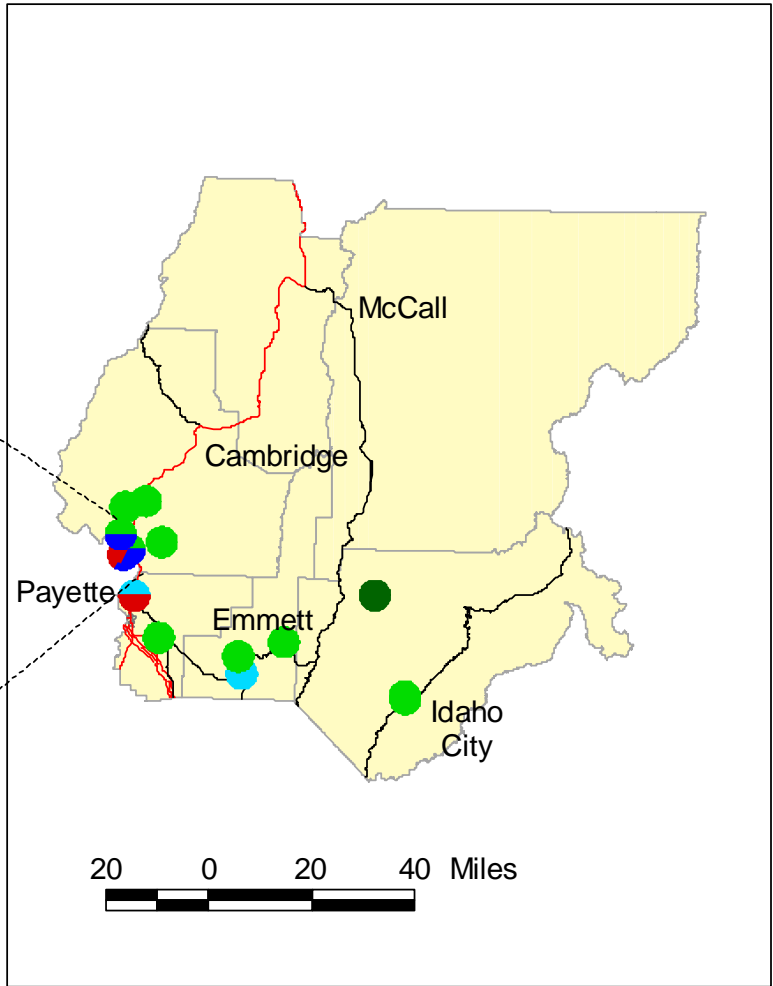
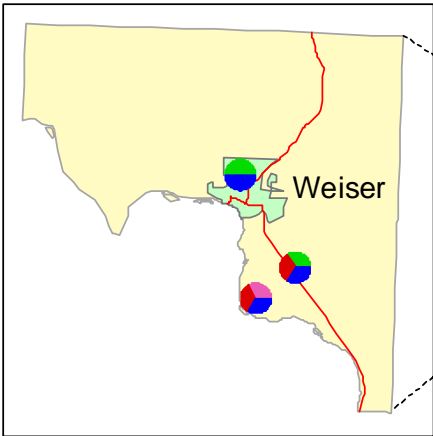




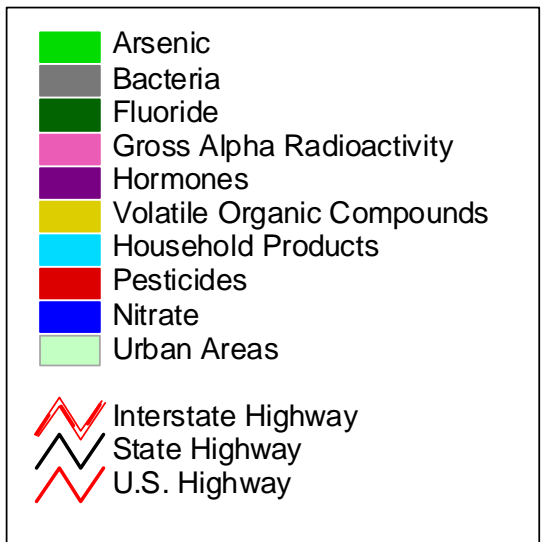
Detections of Concern Northern Idaho 2004

IDWR 3/30/2006 LJC





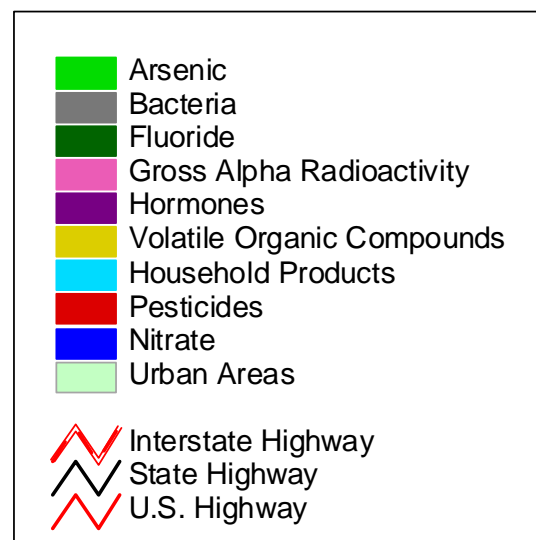
Detections of Concern Western Idaho 2004

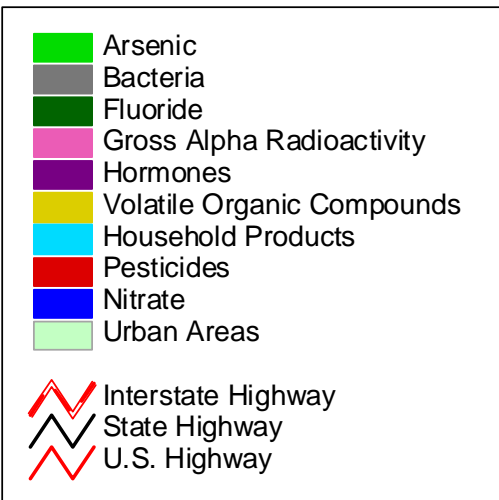
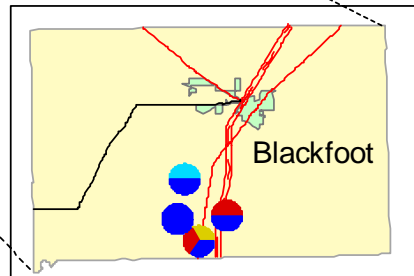
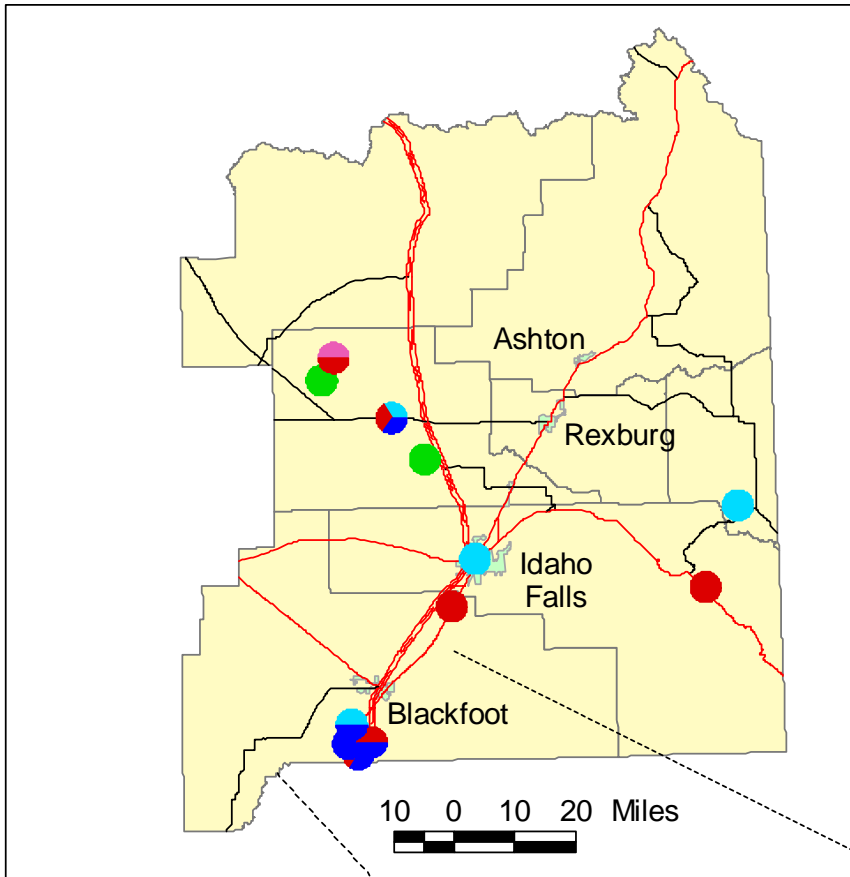




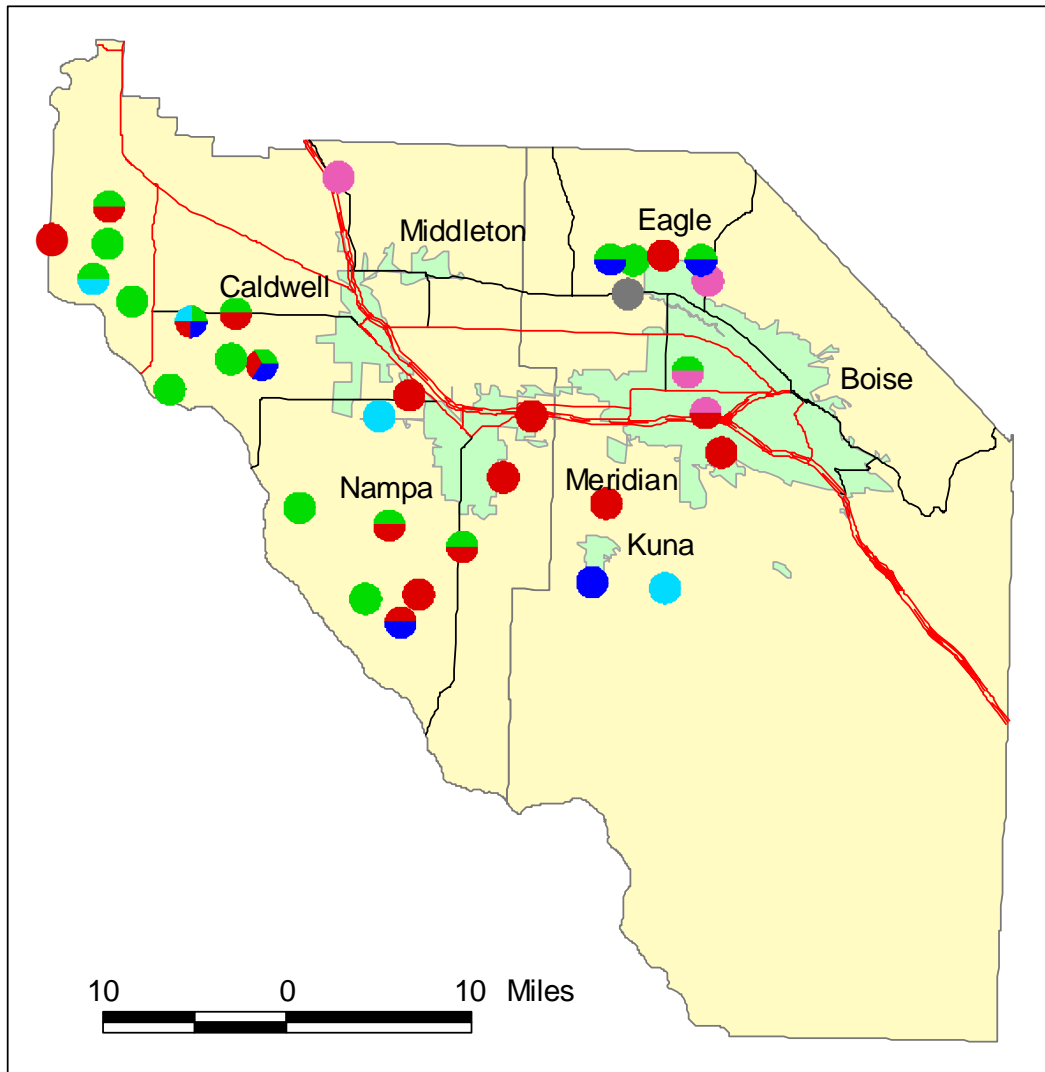
20 0 20 40 Miles

Detections of Concern Central Idaho 2004

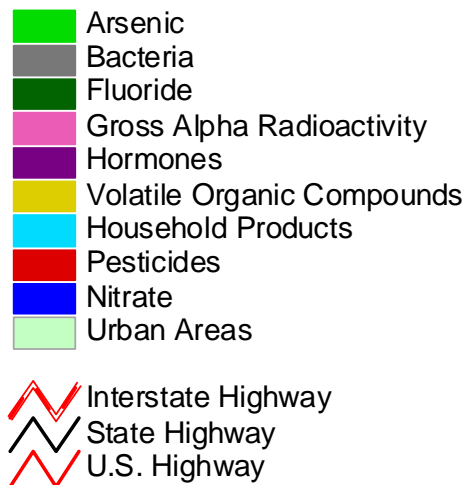


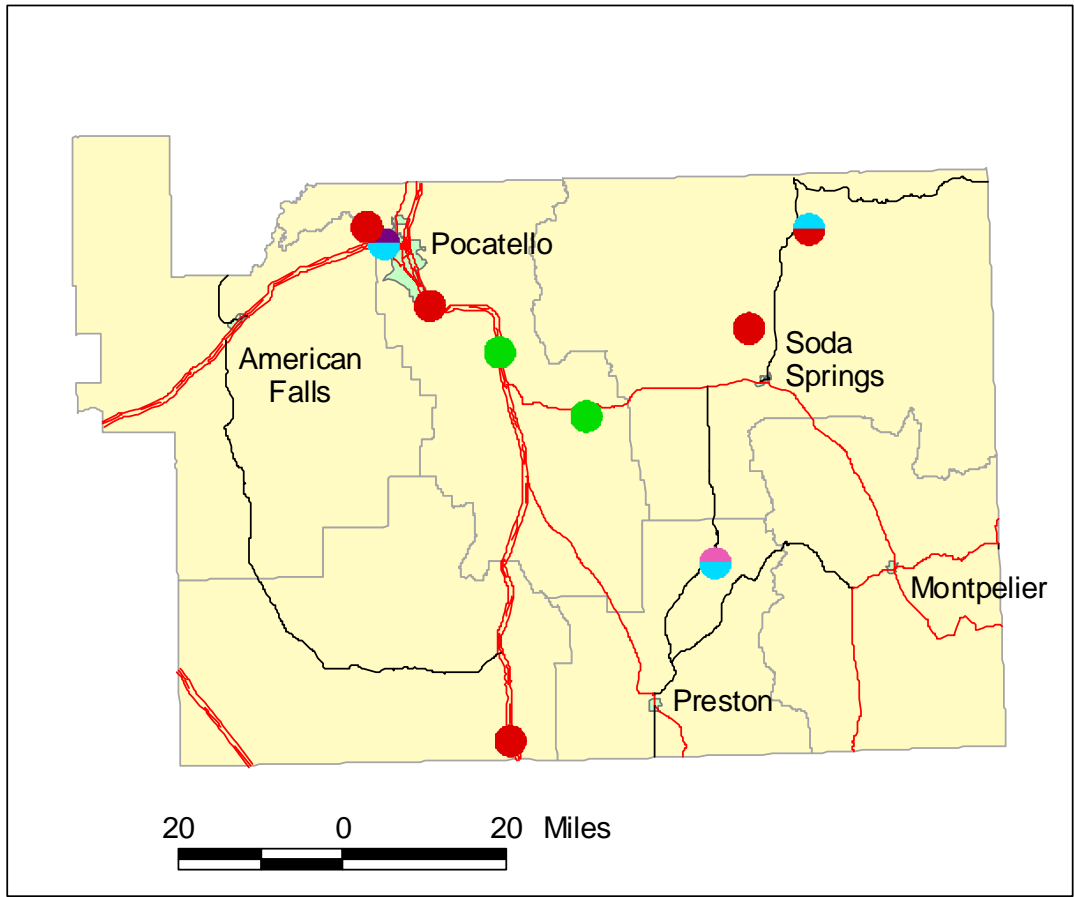


Detections of Concern Eastern Idaho 2004



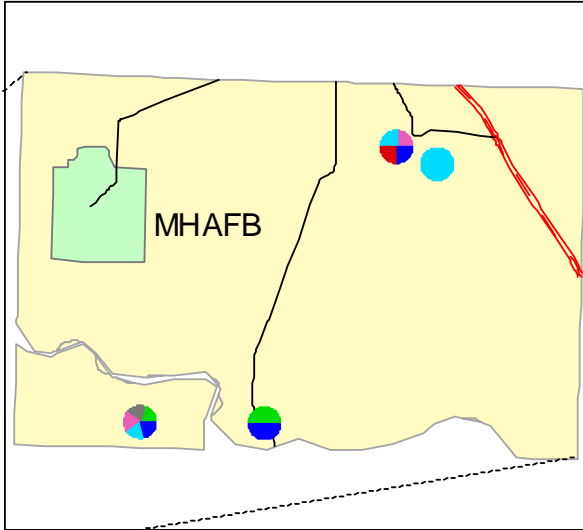
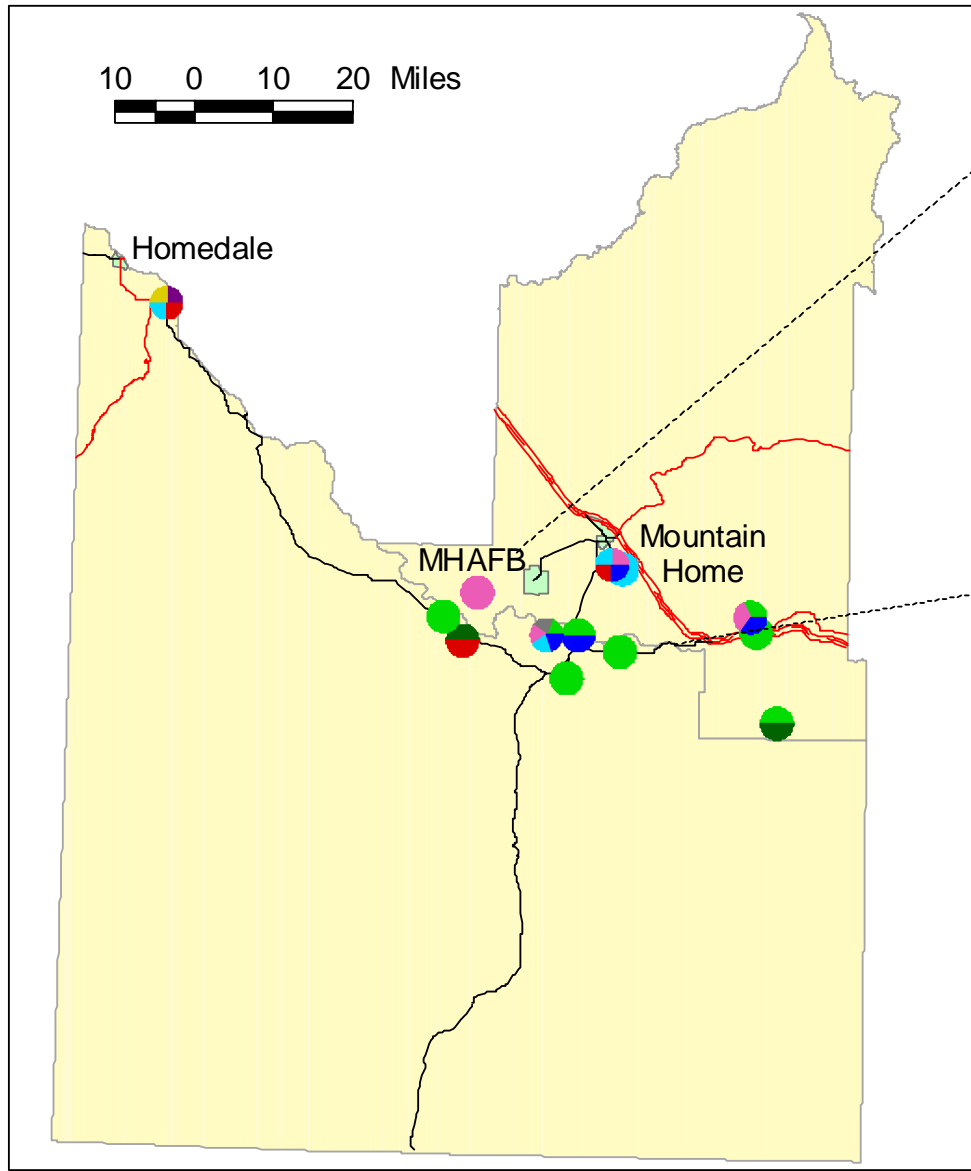
Detections of Concern Ada & Canyon Counties 2004



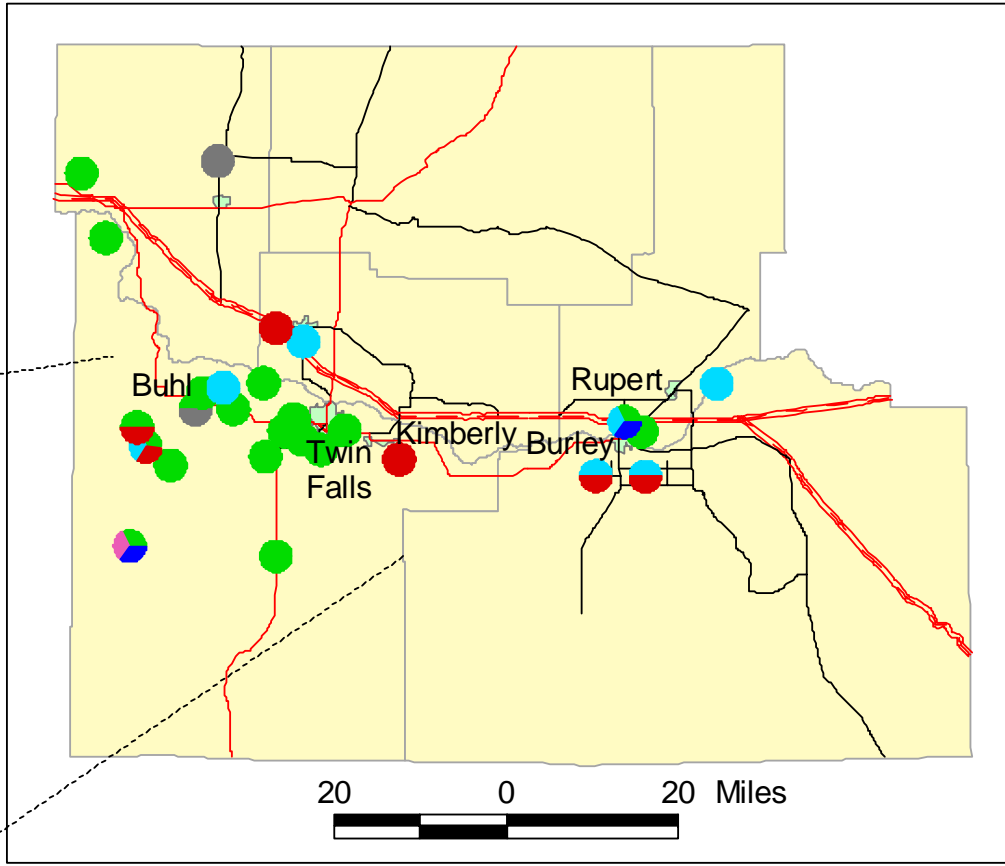
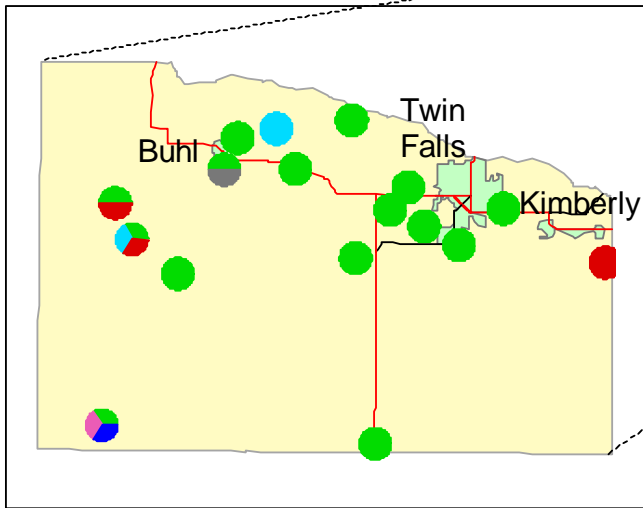


Detections of Concern Southeast Idaho 2004





Detections of Concern Southwest Idaho 2004



Detections of Concern Southern Idaho 2004

- Arsenic
 - Bacteria
 - Fluoride
 - Gross Alpha Radioactivity
 - Hormones
 - Volatile Organic Compounds
 - Household Products
 - Pesticides
 - Nitrate
 - Urban Areas
-
- Interstate Highway
 - State Highway
 - U.S. Highway

Station	County	Water Use	Year Code	Sample Year	Display Name	Value	UOM	MCL
02N 01E 33CAC1	Ada	Household	Annual	1995	Atrazine, desethyl	0.003	ug/L	
02N 01E 33CAC1				2004	Phenol	1.3	ug/L	
02N 01W 11ADA1	Ada	Irrigation	Annual	2004	Alachlor	0.07	ug/L	2
02N 01W 11ADA1				2004	Atrazine	0.25	ug/L	3
02N 01W 11ADA1				1995	Atrazine, desethyl	0.059	ug/L	
02N 01W 35BDC2	Ada	Household	Annual	1995	Atrazine, desethyl	0.027	ug/L	
02N 01W 35BDC2				2004	Nitrate	14.2	mg/L	10
02N 01W 35BDC2				1999	Nitrate	10.9	mg/L	10
02N 01W 35BDC2				1995	Nitrate	11	mg/L	10
03N 01E 03BBA1	Ada	Household	Annual	2004	Arsenic	15.1	ug/L	10
03N 01E 03BBA1				1999	Arsenic	11	ug/L	10
03N 01E 03BBA1				1991	Arsenic	17	ug/L	10
03N 01E 03BBA1				1995	Atrazine, desethyl	0.003	ug/L	
03N 01E 03BBA1				1995	Dibromochloromethane	0.56	ug/L	
03N 01E 03BBA1				2004	Gross Alpha	18.69	pCi/L	15
03N 01E 03BBA1				1991	Uranium	30	ug/L	
03N 01E 14BBD1	Ada	Household	Annual	2004	Atrazine	0.07	ug/L	3
03N 01E 14BBD1				1995	Atrazine, desethyl	0.014	ug/L	
03N 01E 14BBD1				2004	Gross Alpha	26.013	pCi/L	15
03N 01E 14BBD1				1991	Uranium	56	ug/L	
03N 01E 25BCB1	Ada	Household	Annual	2004	Atrazine	0.17	ug/L	3
03N 01E 25BCB1				1995	Atrazine, desethyl	0.11	ug/L	
03N 01E 25BCB1				1991	Fecal Coliform	1	col/100 ml	0
04N 01E 06BBB1	Ada	Household	Annual	2004	Arsenic	21.8	ug/L	10
04N 01E 06BBB1				1999	Arsenic	30	ug/L	10
04N 01E 06BBB1				1995	Arsenic	32	ug/L	10
04N 01E 06BBB1				1991	Arsenic	32	ug/L	10
04N 01E 06BBB1				1999	Atrazine, desethyl	0.008	ug/L	
04N 01E 06BBB1				1995	Atrazine, desethyl	0.005	ug/L	
04N 01E 11BBB1	Ada	Household	Regular	2004	Gross Alpha	42.85	pCi/L	15

Station	County	Water Use	Year Code	Sample Year	Display Name	Value	UOM	MCL
04N 01E 11BBB1	Ada			1991	Uranium	59	ug/L	
04N 01W 02AAB1	Ada	Household	Annual	2004	Arsenic	22.2	ug/L	10
04N 01W 02AAB1				1999	Arsenic	25	ug/L	10
04N 01W 02AAB1				1995	Arsenic	28	ug/L	10
04N 01W 02AAB1				1991	Arsenic	39	ug/L	10
04N 01W 02AAB1				1999	Atrazine, desethyl	0.012	ug/L	
04N 01W 02AAB1				1991	Dichloropropane, 1,2-	19.1	ug/L	5
04N 01W 02AAB1				1999	Metribuzin	0.05	ug/L	
04N 01W 02AAB1				1999	Metribuzin	0.06	ug/L	
04N 01W 02AAB1				2004	Nitrate	10.1	mg/L	10
04N 01W 02AAB1				1991	Nitrate	11	mg/L	10
04N 01W 02AAB1				1999	Trichloropropane	1.91	ug/L	
04N 01W 02AAB1				1995	Trichloropropane	5.01	ug/L	
04N 01W 02AAB1				1991	Trichloropropane	6.77	ug/L	
04N 01W 12DDB1	Ada	Household	Annual	2004	Fecal Coliform	1	col/100 ml	0
05N 01E 32DBD1	Ada	Household	Regular	2003	Arsenic	10.6	ug/L	10
05N 01E 32DBD1				2002	Arsenic	10.9	ug/L	10
05N 01E 32DBD1				2001	Arsenic	10.3	ug/L	10
05N 01E 32DBD1				2000	Arsenic	11.2	ug/L	10
05N 01E 32DBD1				1999	Arsenic	12	ug/L	10
05N 01E 32DBD1				1998	Arsenic	11	ug/L	10
05N 01E 32DBD1				1997	Arsenic	11	ug/L	10
05N 01E 32DBD1				1996	Arsenic	12	ug/L	10
05N 01E 32DBD1				1994	Arsenic	13	ug/L	10
05N 01E 32DBD1				2004	Atrazine	0.05	ug/L	3
05N 01E 32DBD1				1999	Atrazine, desethyl	0.018	ug/L	
05N 01E 32DBD1				1998	Atrazine, desethyl	0.03	ug/L	
05N 01E 32DBD1				1997	Atrazine, desethyl	0.0178	ug/L	
05N 01E 32DBD1				1996	Atrazine, desethyl	0.0276	ug/L	
05N 01E 32DBD1				1995	Atrazine, desethyl	0.042	ug/L	
05N 01E 32DBD1				1996	Chloropyrifos	0.0038	ug/L	
05N 01E 32DBD1				1996	Metolachlor	0.0039	ug/L	
05N 01E 32DBD1				2003	Phenol	0.4	ug/l	
05N 01E 32DBD1				1999	Sevin	0.003	ug/L	

Station	County	Water Use	Year Code	Sample Year	Display Name	Value	UOM	MCL
05N 01E 34DCD1	Ada	Household	Annual	2004	Arsenic	13	ug/L	10
05N 01E 34DCD1				1999	Arsenic	14	ug/L	10
05N 01E 34DCD1				1995	Arsenic	14	ug/L	10
05N 01E 34DCD1				1991	Arsenic	17	ug/L	10
05N 01E 34DCD1				2004	Nitrate	11.5	mg/L	10
05N 01E 34DCD1				1995	Nitrate	11	mg/L	10
05S 33E 36ADA1	Bannock	Household	Annual	2004	2,4-D	0.89	ug/L	70
05S 33E 36ADA1				1995	Atrazine, desethyl	0.005	ug/L	
05S 33E 36ADA1				1994	Atrazine, desethyl	0.003	ug/L	
06S 34E 09BCB1	Bannock	Household	Regular	1999	Atrazine, desethyl	0.006	ug/L	
06S 34E 09BCB1				2004	Estradiol	1.51	ug/L	0
06S 34E 09BCB1				2004	Phenol	0.6	ug/L	
06S 34E 09BCB1				2003	Phenol	0.54	ug/l	
06S 34E 09BCB1				1999	Tebuthiuron	0.002	ug/L	
06S 34E 09BCB1				2004	Tetrachloroethene	0.7	ug/L	
06S 34E 09BCB1				2003	Tetrachloroethene	0.5	ug/l	
06S 34E 09BCB1				2003	Tris(2-butoxyethyl) phosphate	0.4	ug/l	
07S 35E 17DCC1	Bannock	Irrigation	Annual	2004	Atrazine	0.06	ug/L	3
07S 35E 17DCC1				1999	Atrazine, desethyl	0.009	ug/L	
07S 35E 17DCC1				1999	Trichloroethylene	15.3	ug/L	5
07S 35E 17DCC1				1995	Trichloroethylene	17.7	ug/L	5
07S 35E 17DCC1				1991	Trichloroethylene	15.5	ug/L	5
08S 36E 15CDC1	Bannock	Household	Regular	2004	Arsenic	41.7	ug/L	10
08S 36E 15CDC1				2003	Arsenic	40.6	ug/L	10
08S 36E 15CDC1				2002	Arsenic	41.7	ug/L	10
08S 36E 15CDC1				2001	Arsenic	38.3	ug/L	10
08S 36E 15CDC1				2000	Arsenic	44.5	ug/L	10
08S 36E 15CDC1				1999	Arsenic	45	ug/L	10
08S 36E 15CDC1				1998	Arsenic	42	ug/L	10
08S 36E 15CDC1				1997	Arsenic	40	ug/L	10
08S 36E 15CDC1				1996	Arsenic	45	ug/L	10
08S 36E 15CDC1				1992	Arsenic	41	ug/L	10

Station	County	Water Use	Year Code	Sample Year	Display Name	Value	UOM	MCL
08S 36E 15CDC1				1999	Atrazine, desethyl	0.001	ug/L	
08S 36E 15CDC1				2002	Fecal Coliform	1	col/100 ml	0
09S 38E 28CAC2	Bannock	Household	Annual	2004	Arsenic	11.1	ug/L	10
09S 38E 28CAC2				1999	Arsenic	11	ug/L	10
01N 37E 21CBC1	Bingham	Household	Annual	2004	Atrazine	0.41	ug/L	3
01N 37E 21CBC1				1995	Atrazine, desethyl	0.023	ug/L	
01N 37E 21CBC1				1999	Cyanazine	0.05	ug/L	
01N 37E 21CBC1				1995	Cyanazine	0.05	ug/L	
03S 34E 34DDA1	Bingham	Household	Regular	2004	Nitrate	11.5	mg/L	10
03S 34E 34DDA1				2003	Nitrate	10.8	mg/L	10
03S 34E 34DDA1				2002	Nitrate	11.9	mg/L	10
03S 34E 34DDA1				2001	Nitrate	11.9	mg/L	10
03S 34E 34DDA1				2000	Nitrate	11.5	mg/L	10
03S 34E 34DDA1				1999	Nitrate	10.9	mg/L	10
03S 34E 34DDA1				1998	Nitrate	10.5	mg/L	10
03S 34E 34DDA1				1997	Nitrate	10.7	mg/L	10
03S 34E 34DDA1				2004	Phenol	1.2	ug/L	
04S 34E 15CDC1	Bingham	Household	Annual	1995	Metribuzin	0.008	ug/L	
04S 34E 15CDC1				2004	Nitrate	21	mg/L	10
04S 34E 15CDC1				1999	Nitrate	16	mg/L	10
04S 34E 15CDC1				1995	Nitrate	21	mg/L	10
04S 34E 15CDC1				1991	Nitrate	12	mg/L	10
04S 34E 26DAD1	Bingham	Household	Annual	2004	Alachlor	0.09	ug/L	2
04S 34E 26DAD1				1995	Atrazine, desethyl	0.001	ug/L	
04S 34E 26DAD1				2004	Dibromoethane,1,2- (EDB)	1.52	ug/L	0.05
04S 34E 26DAD1				1999	Dibromoethane,1,2- (EDB)	5.36	ug/L	0.05
04S 34E 26DAD1				1995	Dibromoethane,1,2- (EDB)	14	ug/L	0.05
04S 34E 26DAD1				1991	Dibromoethane,1,2- (EDB)	20.2	ug/L	0.05
04S 34E 26DAD1				1995	Dichloropropane,1,2-	6.9	ug/L	5
04S 34E 26DAD1				1991	Dichloropropane,1,2-	8.91	ug/L	5
04S 34E 26DAD1				1999	Metolachlor	0.009	ug/L	
04S 34E 26DAD1				1995	Metolachlor	0.002	ug/L	

Station	County	Water Use	Year Code	Sample Year	Display Name	Value	UOM	MCL
06N 05E 26CBB1	Boise	Household	Regular	2004	Arsenic	10.2	ug/L	10
06N 05E 26CBB1				2000	Arsenic	17.3	ug/L	10
06N 05E 34ABA1	Boise	Public Supply	Annual	2004	Arsenic	42.8	ug/L	10
06N 05E 34ABA1				1999	Arsenic	42	ug/L	10
06N 05E 34ABA1				1995	Arsenic	45	ug/L	10
06N 05E 34ABA1				1991	Arsenic	33	ug/L	10
06N 05E 34ABA1				1990	Arsenic	30	ug/L	10
09N 04E 15CCA1	Boise	Household	Annual	2004	Fluoride	5	mg/L	4
09N 04E 15CCA1				1999	Fluoride	5.1	mg/L	4
09N 04E 15CCA1				1995	Fluoride	4.4	mg/L	4
09N 04E 15CCA1				1991	Fluoride	5.6	mg/L	4
55N 06W 01DDD1	Bonner	Household	Annual	2004	Arsenic	22.7	ug/L	10
55N 06W 01DDD1				1999	Arsenic	22	ug/L	10
55N 06W 01DDD1				1995	Arsenic	21	ug/L	10
55N 06W 01DDD1				1991	Arsenic	23	ug/L	10
57N 01E 27BCB1S	Bonner	Household	Annual	2004	Fecal Coliform	2	col/100 ml	0
57N 01E 27BCB1S				1995	Fecal Coliform	10	col/100 ml	0
01N 44E 17ADA1	Bonneville	Household	Regular	2000	Acetochlor	0.04	ug/L	
01N 44E 17ADA1				1999	DDE,4,4'-	0.001	ug/L	
01N 44E 17ADA1				2004	Metolachlor	0.06	ug/L	500
02N 38E 18CBC1	Bonneville	Public Supply	Regular	1999	Atrazine, desethyl	0.02	ug/L	
02N 38E 18CBC1				2004	Phenol	0.3	ug/L	
02N 38E 18CBC1				2003	Phenol	1	ug/l	
62N 02E 17BCC1	Boundary	Household	Annual	2004	Arsenic	11.2	ug/L	10
62N 02E 17BCC1				1999	Arsenic	11	ug/L	10
65N 01W 26AAD1	Boundary	Household	New	2004	Arsenic	15	ug/L	10
01N 02W 06ADD1	Canyon	Irrigation	Annual	1995	Arsenic	15	ug/L	10
01N 02W 06ADD1				1991	Arsenic	17	ug/L	10

Station	County	Water Use	Year Code	Sample Year	Display Name	Value	UOM	MCL
01N 02W 06ADD1				2004	Metolachlor	0.06	ug/L	500
01N 03W 02CCB1	Canyon	Household	Annual	2004	Arsenic	29.7	ug/L	10
01N 03W 02CCB1				1999	Arsenic	22	ug/L	10
01N 03W 02CCB1				1995	Arsenic	32	ug/L	10
01N 03W 02CCB1				1991	Arsenic	35	ug/L	10
01N 03W 13AAA1	Canyon	Irrigation	Annual	2004	Alachlor	0.08	ug/L	2
01N 03W 13AAA1				2004	Nitrate	21.8	mg/L	10
01N 03W 13AAA1				1999	Nitrate	20.8	mg/L	10
01N 03W 13AAA1				1995	Nitrate	19	mg/L	10
01N 03W 13AAA1				1991	Nitrate	21	mg/L	10
02N 02W 11CBDD1	Canyon	Household	New	2004	Arsenic	14.8	ug/L	10
02N 02W 11CBDD1				2004	Atrazine	0.06	ug/L	3
02N 03W 09ADA1	Canyon	Household	New	2004	Arsenic	11.3	ug/L	10
02N 03W 13CCA1	Canyon	Household	Annual	2004	Arsenic	10.1	ug/L	10
02N 03W 13CCA1				2004	Metolachlor	0.07	ug/L	500
03N 01W 18DAC1	Canyon	Household	Regular	1998	Alpha, Gross (as Thorium)	18.1	pCi/l	15
03N 01W 18DAC1				1997	Alpha, Gross (as Thorium)	29	pCi/l	15
03N 01W 18DAC1				2004	Atrazine	0.29	ug/L	3
03N 01W 18DAC1				1998	Atrazine, desethyl	0.03	ug/L	
03N 01W 18DAC1				1997	Atrazine, desethyl	0.0184	ug/L	
03N 01W 18DAC1				1996	Atrazine, desethyl	0.014	ug/L	
03N 01W 18DAC1				2003	Phenol	0.62	ug/l	
03N 01W 18DAC1				1993	Uranium	30	ug/L	
03N 01W 18DAC1				1993	Uranium	10	pCi/L	
03N 01W 18DAC1				1993	Uranium 234	21	pCi/L	
03N 01W 18DAC1				1993	Uranium 235	0.7	pCi/L	
03N 02W 07CBC1	Canyon	Household	Annual	2004	2,4-D	1.01	ug/L	70
03N 02W 33CAD2	Canyon	Household	Regular	2004	Alachlor	0.05	ug/L	2
03N 02W 33CAD2				2004	Atrazine	0.10	ug/L	3

Station	County	Water Use	Year Code	Sample Year	Display Name	Value	UOM	MCL
03N 03W 14CDA1	Canyon	Household	Regular	2000	Acetochlor	0.06	ug/L	
03N 03W 14CDA1				1998	Alpha, Gross (as Thorium)	34	pCi/l	15
03N 03W 14CDA1				1997	Alpha, Gross (as Thorium)	39.9	pCi/l	15
03N 03W 14CDA1				1998	Atrazine, desethyl	0.05	ug/L	
03N 03W 14CDA1				1997	Atrazine, desethyl	0.0407	ug/L	
03N 03W 14CDA1				1996	Atrazine, desethyl	0.012	ug/L	
03N 03W 14CDA1				2002	Dacthal (DCPA)	1.3	ug/l	
03N 03W 14CDA1				2000	Nitrate	11	mg/L	10
03N 03W 14CDA1				1999	Nitrate	10.2	mg/L	10
03N 03W 14CDA1				2004	Phenol	0.6	ug/L	
03N 03W 14CDA1				2003	Phenol	1.7	ug/l	
03N 03W 14CDA1				1994	Uranium	11	ug/L	
03N 04W 03AAD1	Canyon	Irrigation	Annual	2004	Arsenic	98.8	ug/L	10
03N 04W 03AAD1				1999	Arsenic	91	ug/L	10
03N 04W 03AAD1				1995	Arsenic	120	ug/L	10
03N 04W 03AAD1				1991	Arsenic	130	ug/L	10
03N 04W 03AAD1				1995	Atrazine, desethyl	0.003	ug/L	
03N 04W 03AAD1				2004	Nitrate	17.8	mg/L	10
03N 04W 03AAD1				1999	Nitrate	16	mg/L	10
03N 04W 03AAD1				1995	Nitrate	14	mg/L	10
03N 04W 03AAD1				1991	Nitrate	15	mg/L	10
03N 05W 11DAD1	Canyon	Household	Annual	2004	Alachlor	0.07	ug/L	2
03N 05W 11DAD1				2004	Arsenic	26.3	ug/L	10
03N 05W 11DAD1				1999	Arsenic	28	ug/L	10
03N 05W 11DAD1				1995	Arsenic	31	ug/L	10
03N 05W 11DAD1				1991	Arsenic	30	ug/L	10
03N 05W 11DAD1				1995	Atrazine, desethyl	0.013	ug/L	
03N 05W 11DAD1				1999	Fecal Coliform	2	col/100 ml	0
03N 05W 11DAD1				1999	Nitrate	10.9	mg/L	10
04N 04W 21CAA2	Canyon	Household	Regular	2004	Alachlor	0.10	ug/L	2
04N 04W 21CAA2				2004	Arsenic	28.3	ug/L	10
04N 04W 21CAA2				2003	Arsenic	28	ug/L	10
04N 04W 21CAA2				2002	Arsenic	27.1	ug/L	10

Station	County	Water Use	Year Code	Sample Year	Display Name	Value	UOM	MCL
04N 05W 07DCA1	Canyon	Household	New	2004	Arsenic	38.8	ug/L	10
04N 05W 07DCA1				2004	Phenol	0.5	ug/L	
04N 05W 21AAB2	Canyon	Household	Regular	2004	Arsenic	54.8	ug/L	10
04N 05W 21AAB2				2003	Arsenic	55.6	ug/L	10
04N 05W 21AAB2				2002	Arsenic	53.5	ug/L	10
04N 05W 21AAB2				2001	Arsenic	48.6	ug/L	10
04N 05W 21AAB2				2000	Arsenic	55.8	ug/L	10
04N 05W 21AAB2				1999	Arsenic	57	ug/L	10
04N 05W 21AAB2				1998	Arsenic	58	ug/L	10
04N 05W 21AAB2				1997	Arsenic	46	ug/L	10
04N 05W 21AAB2				1996	Arsenic	60	ug/L	10
04N 05W 21AAB2				1993	Arsenic	62	ug/L	10
04N 05W 21AAB2				2001	Fecal Coliform	44	col/100 ml	0
05N 03W 08DDC1	Canyon	Household	Annual	2004	Gross Alpha	27.46	pCi/L	15
05N 03W 08DDC1				1991	Methylene chloride	17.4	ug/L	
05N 03W 08DDC1				1991	Uranium	50	ug/L	
05N 04W 28CDC1	Canyon	Household	Annual	2003	Fecal Coliform	2	col/100 ml	0
05N 04W 28CDC1				1994	Fecal Coliform	19	col/100 ml	0
05N 05W 20CCD1	Canyon	Household	Annual	2004	Alachlor	0.09	ug/L	2
05N 05W 20CCD1				2004	Arsenic	23.4	ug/L	10
05N 05W 20CCD1				1999	Arsenic	26	ug/L	10
05N 05W 20CCD1				1995	Arsenic	25	ug/L	10
05N 05W 20CCD1				1991	Arsenic	24	ug/L	10
05N 05W 20CCD1				1995	Atrazine, desethyl	0.01	ug/L	
05N 05W 32CDC1	Canyon	Household	Regular	2003	1,4-Dichlorobenzene	0.1	ug/l	
05N 05W 32CDC1				2004	Arsenic	17.5	ug/L	10
05N 05W 32CDC1				2003	Arsenic	20.5	ug/L	10
05N 05W 32CDC1				2002	Arsenic	20.4	ug/L	10
05N 05W 32CDC1				2001	Arsenic	17.9	ug/L	10
05N 05W 32CDC1				2000	Arsenic	18	ug/L	10
05N 05W 32CDC1				1999	Arsenic	19	ug/L	10
05N 05W 32CDC1				1998	Arsenic	18	ug/L	10

Station	County	Water Use	Year Code	Sample Year	Display Name	Value	UOM	MCL
05N 05W 32CDC1				1997	Arsenic	37	ug/L	10
05N 05W 32CDC1				1996	Arsenic	18	ug/L	10
05N 05W 32CDC1				1993	Arsenic	18	ug/L	10
05N 05W 32CDC1				1990	Arsenic	20	ug/L	10
05N 05W 32CDC1				1998	Atrazine, desethyl	0.01	ug/L	
05N 05W 32CDC1				1997	Atrazine, desethyl	0.0112	ug/L	
05N 05W 32CDC1				1996	Atrazine, desethyl	0.012	ug/L	
05N 05W 32CDC1				2003	Phenol	0.2	ug/l	
05N 06W 35CDB1	Canyon	Household	Annual	2004	Atrazine	0.09	ug/L	3
05N 06W 35CDB1				2004	Atrazine	0.09	ug/L	3
06S 42E 01DAC1	Caribou	Household	Annual	2004	Atrazine	0.06	ug/L	3
06S 42E 01DAC1				1999	Atrazine, desethyl	0.011	ug/L	
06S 42E 01DAC1				2004	Benzophenone	0.1	ug/L	
08S 41E 02DDC1	Caribou	Household	Annual	2004	Atrazine	0.18	ug/L	3
08S 41E 02DDC1				1999	Atrazine, desethyl	0.003	ug/L	
08S 41E 02DDC1				1999	Triallate	0.003	ug/L	
09S 25E 19ADA1	Cassia	Household	Annual	1995	Atrazine, desethyl	0.017	ug/L	
09S 25E 19ADA1				2004	Phenol	0.3	ug/L	
11S 22E 14BAB1	Cassia	Household	Regular	2002	Acetochlor	0.06	ug/L	
11S 22E 14BAB1				1999	Arsenic	12	ug/L	10
11S 22E 14BAB1				1997	Arsenic	12	ug/L	10
11S 22E 14BAB1				1995	Arsenic	11	ug/L	10
11S 22E 14BAB1				2004	Atrazine	0.06	ug/L	3
11S 22E 14BAB1				1996	Atrazine, desethyl	0.038	ug/L	
11S 22E 14BAB1				1995	Atrazine, desethyl	0.004	ug/L	
11S 22E 14BAB1				2004	Bromacil	0.6	ug/L	
11S 22E 14BAB1				2003	Bromacil	0.62	ug/l	
11S 22E 14BAB1				1996	Fecal Coliform	11.5	col/100 ml	0
11S 22E 14BAB1				1998	Nitrate	14.7	mg/L	10
11S 22E 14BAB1				1997	Nitrate	14.1	mg/L	10
11S 22E 14BAB1				1996	Nitrate	11	mg/L	10
11S 22E 14BAB1				1995	Nitrate	14	mg/L	10

Station	County	Water Use	Year Code	Sample Year	Display Name	Value	UOM	MCL
11S 22E 14BAB1				2003	Phenol	0.74	ug/l	
11S 22E 14BAB1				1995	Triallate	0.02	ug/L	
11S 22E 14BAB1				2003	Tris(2-butoxyethyl) phosphate	0.2	ug/l	
11S 23E 11CDD1	Cassia	Household	Annual	2004	Atrazine	0.10	ug/L	3
11S 23E 11CDD1				1995	Atrazine, desethyl	0.13	ug/L	
11S 23E 11CDD1				2004	Bromacil	1.2	ug/L	
11S 23E 11CDD1				1999	Cyanazine	0.05	ug/L	
11S 23E 11CDD1				1995	Cyanazine	0.07	ug/L	
11S 23E 11CDD1				1999	Nitrate	12.8	mg/L	10
11S 23E 11CDD1				1995	Nitrate	12	mg/L	10
11S 23E 11CDD1				2004	Phenol	1.6	ug/L	
09N 36E 30ACC1	Clark	Irrigation	Annual	1995	Dipropylthiocarbamate, S-Ethyl (EPTC)	0.005	ug/L	
09N 36E 30ACC1				1995	Metribuzin	0.1	ug/L	
10N 13E 09ADC1	Custer	Public Supply	Regular	1993	Aldicarb	0.33	ug/L	
10N 13E 09ADC1				2004	Bromacil	0.7	ug/L	
14N 19E 09ADB1	Custer	Household	New	2004	Arsenic	11.1	ug/L	10
14N 19E 09ADB1				2004	Gross Alpha	21.46	pCi/L	15
04S 06E 13AAA1	Elmore	Household	Annual	2004	Atrazine	0.40	ug/L	3
04S 06E 13AAA1				1995	Atrazine, desethyl	0.61	ug/L	
04S 06E 13AAA1				2004	Bromacil	0.5	ug/L	
04S 06E 13AAA1				1995	Cyanazine	0.1	ug/L	
04S 06E 13AAA1				2004	Gross Alpha	54.44	pCi/L	15
04S 06E 13AAA1				2004	Nitrate	28.8	mg/L	10
04S 06E 13AAA1				1999	Nitrate	27.4	mg/L	10
04S 06E 13AAA1				1995	Nitrate	29	mg/L	10
04S 06E 13AAA1				1991	Nitrate	16	mg/L	10
04S 06E 13AAA1				1991	Uranium	47	ug/L	
04S 07E 17CAB1	Elmore	Household	Regular	2004	Phenol	0.4	ug/L	
04S 07E 17CAB1				2003	Phenol	0.2	ug/l	
05S 04E 05AAD2	Elmore	Household	Regular	2004	Gross Alpha	20.84	pCi/L	15

Station	County	Water Use	Year Code	Sample Year	Display Name	Value	UOM	MCL
05S 06E 32AAA1	Elmore	Household	Annual	2004	Arsenic	16.3	ug/L	10
05S 06E 32AAA1				1999	Arsenic	18	ug/L	10
05S 06E 32AAA1				1995	Arsenic	20	ug/L	10
05S 06E 32AAA1				1991	Arsenic	17	ug/L	10
05S 06E 32AAA1				2004	Nitrate	32.9	mg/L	10
05S 06E 32AAA1				1999	Nitrate	12.3	mg/L	10
05S 06E 32AAA1				1991	Nitrate	12	mg/L	10
05S 09E 13ACD1	Elmore	Stock	Annual	2004	Arsenic	127	ug/L	10
05S 09E 13ACD1				1999	Arsenic	110	ug/L	10
05S 09E 13ACD1				1995	Arsenic	110	ug/L	10
05S 09E 13ACD1				1991	Arsenic	96	ug/L	10
05S 09E 13ACD1				2004	Gross Alpha	71.89	pCi/L	15
05S 09E 13ACD1				2004	Nitrate	10.1	mg/L	10
05S 09E 13ACD1				1991	Uranium	100	ug/L	
05S 10E 30BDA1	Elmore	Household	Regular	2004	Arsenic	37.1	ug/L	10
05S 10E 30BDA1				2003	Arsenic	34.6	ug/L	10
05S 10E 30BDA1				2002	Arsenic	28.2	ug/L	10
05S 10E 30BDA1				2001	Arsenic	33	ug/L	10
05S 10E 30BDA1				2000	Arsenic	33.7	ug/L	10
05S 10E 30BDA1				1999	Arsenic	32	ug/L	10
05S 10E 30BDA1				1998	Arsenic	35	ug/L	10
05S 10E 30BDA1				1997	Arsenic	32	ug/L	10
05S 10E 30BDA1				1996	Arsenic	33	ug/L	10
05S 10E 30BDA1				1995	Arsenic	30	ug/L	10
05S 10E 30BDA1				1994	Arsenic	33	ug/L	10
07S 10E 22DDD1	Elmore	Household	Annual	2004	Arsenic	14.7	ug/L	10
07S 10E 22DDD1				1999	Arsenic	25	ug/L	10
07S 10E 22DDD1				1995	Arsenic	27	ug/L	10
07S 10E 22DDD1				1992	Arsenic	26	ug/L	10
07S 10E 22DDD1				2004	Fluoride	9.8	mg/L	4
07S 10E 22DDD1				1999	Fluoride	9.3	mg/L	4
12S 40E 36AAD1	Franklin	Household	Annual	1999	Atrazine, desethyl	0.002	ug/L	

Station	County	Water Use	Year Code	Sample Year	Display Name	Value	UOM	MCL
31N 02E 35ADB1	Idaho	Household	Annual	2004	Phenol	0.3	ug/L	
31N 03E 36BCA1	Idaho	Household	Regular	2000	Acetochlor	0.04	ug/L	
31N 03E 36BCA1				1998	Fecal Coliform	4	col/100 ml	0
31N 03E 36BCA1				1995	Fecal Coliform	2	col/100 ml	0
05N 36E 26BBB1	Jefferson	Stock	Annual	2004	Arsenic	10.6	ug/L	10
05N 36E 26BBB1				1999	Arsenic	11	ug/L	10
05N 36E 26BBB1				1995	Arsenic	11	ug/L	10
06N 35E 14CCC1	Jefferson	Household	Regular	2000	Acetochlor	0.04	ug/L	
06N 35E 14CCC1				2004	Atrazine	0.25	ug/L	3
06N 35E 14CCC1				2004	Nitrate	10.4	mg/L	10
06N 35E 14CCC1				2004	Phenol	2.2	ug/L	
06N 35E 14CCC1				2003	Phenol	0.3	ug/l	
07N 33E 13CBC1	Jefferson	Household	Annual	2004	Arsenic	15.9	ug/L	10
07N 33E 13CBC1				1999	Arsenic	19	ug/L	10
07N 33E 13CBC1				1995	Arsenic	21	ug/L	10
07N 33E 13CBC1				1991	Arsenic	18	ug/L	10
07N 33E 13CBC1				1991	Fecal Coliform	3	col/100 ml	0
08N 34E 20AAD1	Jefferson	Irrigation	Annual	2004	Gross Alpha	17.87	pCi/L	15
08N 34E 29CCC1	Jefferson	Irrigation	Annual	2004	Atrazine	0.27	ug/L	3
08S 16E 21AAA1	Jerome	Household	Annual	2004	Atrazine	0.11	ug/L	3
08S 16E 21AAA1				1995	Atrazine, desethyl	0.003	ug/L	
08S 17E 30CBD1	Jerome	Industrial	Regular	1996	Atrazine, desethyl	0.004	ug/L	
08S 17E 30CBD1				2003	Bisphenol A	0.099	ug/l	
08S 17E 30CBD1				2004	Phenol	0.7	ug/L	
08S 17E 30CBD1				2003	Phenol	0.89	ug/l	
49N 04W 09CCC1	Kootenai	Household	Annual	2004	Arsenic	19.9	ug/L	10
49N 04W 09CCC1				1999	Arsenic	16	ug/L	10
49N 04W 09CCC1				1995	Arsenic	17	ug/L	10

Station	County	Water Use	Year Code	Sample Year	Display Name	Value	UOM	MCL
49N 04W 09CCC1				1991	Arsenic	16	ug/L	10
10S 23E 09CBCB1	Minidoka	Household	Annual	2004	Arsenic	11.4	ug/L	10
10S 23E 09CBCB1				1999	Arsenic	15	ug/L	10
10S 23E 09CBCB1				1995	Arsenic	15	ug/L	10
10S 23E 09CBCB1				1991	Arsenic	19	ug/L	10
10S 23E 09CBCB1				1995	Atrazine, desethyl	0.032	ug/L	
10S 23E 09CBCB1				1991	Benzene	8.45	ug/L	5
10S 23E 09CBCB1				2004	Bromacil	0.3	ug/L	
10S 23E 09CBCB1				1995	Cyanazine	0.05	ug/L	
10S 23E 09CBCB1				1999	Methyl tertiary butyl ether (MTBE)	2.89	ug/L	
10S 23E 09CBCB1				2004	Nitrate	67.9	mg/L	10
10S 23E 09CBCB1				1999	Nitrate	100	mg/L	10
10S 23E 09CBCB1				1995	Nitrate	78	mg/L	10
10S 23E 09CBCB1				2004	Tris(2-butoxyethyl) phosphate	0.7	ug/L	
10S 23E 14CCB1	Minidoka	Household	Regular	2004	Arsenic	11.9	ug/L	10
10S 23E 14CCB1				2003	Arsenic	10.6	ug/L	10
10S 23E 14CCB1				2002	Arsenic	10.1	ug/L	10
10S 23E 14CCB1				2001	Arsenic	10.3	ug/L	10
10S 23E 14CCB1				2000	Arsenic	10.9	ug/L	10
10S 23E 14CCB1				1999	Arsenic	12	ug/L	10
10S 23E 14CCB1				1998	Arsenic	11	ug/L	10
10S 23E 14CCB1				1997	Arsenic	11	ug/L	10
10S 23E 14CCB1				1996	Arsenic	11	ug/L	10
10S 23E 14CCB1				1995	Arsenic	12	ug/L	10
10S 23E 14CCB1				1994	Arsenic	14	ug/L	10
10S 23E 14CCB1				1996	Atrazine, desethyl	0.021	ug/L	
10S 23E 14CCB1				1994	Uranium	9	ug/L	
16S 36E 14DBC1	Oneida	Household	Regular	2000	Acetochlor	0.05	ug/L	
16S 36E 14DBC1				2004	Metolachlor	0.05	ug/L	500
02N 04W 04ADA1	Owyhee	Irrigation	Regular	2004	2,4-D	0.74	ug/L	70
02N 04W 04ADA1				1994	Arsenic	34	ug/L	10
02N 04W 04ADA1				2004	Chloroform	4.21	ug/L	
02N 04W 04ADA1				2001	Chloroform	3.02	ug/L	

Station	County	Water Use	Year Code	Sample Year	Display Name	Value	UOM	MCL
02N 04W 04ADA1				1999	Chloroform	1.29	ug/L	
02N 04W 04ADA1				1994	Chloroform	1.21	ug/L	
02N 04W 04ADA1				2002	Dacthal (DCPA)	35.2	ug/l	
02N 04W 04ADA1				1994	Dichlorobromomethane	0.98	ug/L	
02N 04W 04ADA1				2004	D-Limonene	0.4	ug/L	
02N 04W 04ADA1				2004	Estradiol	1.53	ug/L	0
02N 04W 04ADA1				1994	Nitrate	13	mg/L	10
02N 04W 04ADA1				1994	Nitrate	46.11	mg/L	10
02N 04W 04ADA1				2004	Phenol	0.3	ug/L	
05S 03E 22BBB2	Owyhee	Public Supply	Regular	2000	Acetochlor	0.07	ug/L	
05S 03E 22BBB2				1997	Alpha, Gross (as Thorium)	20.8	pCi/l	15
05S 03E 22BBB2				2004	Arsenic	17.7	ug/L	10
05S 03E 22BBB2				2003	Arsenic	17.4	ug/L	10
05S 03E 22BBB2				2002	Arsenic	16.9	ug/L	10
05S 03E 22BBB2				2001	Arsenic	15.4	ug/L	10
05S 03E 22BBB2				2000	Arsenic	16.4	ug/L	10
05S 03E 22BBB2				1999	Arsenic	15	ug/L	10
05S 03E 22BBB2				1998	Arsenic	17	ug/L	10
05S 03E 22BBB2				1997	Arsenic	17	ug/L	10
05S 03E 22BBB2				1996	Arsenic	18	ug/L	10
05S 03E 22BBB2				1995	Arsenic	16	ug/L	10
05S 03E 22BBB2				1991	Arsenic	16	ug/L	10
05S 03E 22BBB2				1995	Atrazine, desethyl	0.012	ug/L	
05S 05E 33BBD1	Owyhee	Household	Annual	2004	Arsenic	20.7	ug/L	10
05S 05E 33BBD1				1999	Arsenic	13	ug/L	10
05S 05E 33BBD1				1995	Arsenic	14	ug/L	10
05S 05E 33BBD1				1991	Arsenic	14	ug/L	10
05S 05E 33BBD1				2004	Fecal Coliform	2	col/100 ml	0
05S 05E 33BBD1				2004	Gross Alpha	24.50	pCi/L	15
05S 05E 33BBD1				2004	Nitrate	19.2	mg/L	10
05S 05E 33BBD1				1999	Nitrate	27.3	mg/L	10
05S 05E 33BBD1				1995	Nitrate	26	mg/L	10
05S 05E 33BBD1				1991	Nitrate	19	mg/L	10
05S 05E 33BBD1				2004	Phenol	0.2	ug/L	
05S 05E 33BBD1				2004	Selenium	193	ug/L	50

Station	County	Water Use	Year Code	Sample Year	Display Name	Value	UOM	MCL
05S 05E 33BBD1				1999	Selenium	120	ug/L	50
06S 03E 01ABB1	Owyhee	Household	Annual	2004	2,4-D	0.79	ug/L	70
06S 03E 01ABB1				2004	Fluoride	4.1	mg/L	4
06S 03E 01ABB1				1999	Fluoride	4.2	mg/L	4
06S 03E 01ABB1				1995	Fluoride	5.4	mg/L	4
06S 03E 01ABB1				1991	Fluoride	5.4	mg/L	4
06S 06E 30DBB1	Owyhee	Household	Annual	2004	Arsenic	26	ug/L	10
06S 06E 30DBB1				1999	Arsenic	27	ug/L	10
06S 06E 30DBB1				1995	Arsenic	29	ug/L	10
06S 06E 30DBB1				1991	Arsenic	28	ug/L	10
06S 07E 08BBA1	Owyhee	Household	Annual	2004	Arsenic	54.6	ug/L	10
06S 07E 08BBA1				1999	Arsenic	12	ug/L	10
06S 07E 08BBA1				1995	Arsenic	37	ug/L	10
06S 07E 08BBA1				1991	Arsenic	24	ug/L	10
06S 07E 08BBA1				1999	Chloroform	0.51	ug/L	
07N 04W 04DAB1	Payette	Household	New	2004	Arsenic	35.1	ug/L	10
09N 05W 26CBB1	Payette	Household	Regular	2000	Acetochlor	0.04	ug/L	
09N 05W 26CBB1				1998	Alpha, Gross (as Thorium)	23.1	pCi/l	15
09N 05W 26CBB1				2004	Atrazine	0.09	ug/L	3
09N 05W 26CBB1				1998	Atrazine, desethyl	0.08	ug/L	
09N 05W 26CBB1				1996	Atrazine, desethyl	0.03	ug/L	
09N 05W 26CBB1				2004	Phenol	0.8	ug/L	
09N 05W 26CBB1				2003	Tetrachloroethene	0.1	ug/l	
03N 45E 05CAC1	Teton	Household	Annual	2004	Phenol	0.3	ug/L	
06S 12E 25DAA1	Twin Falls	Household	Annual	2004	Arsenic	14.1	ug/L	10
06S 12E 25DAA1				1999	Arsenic	14	ug/L	10
06S 12E 25DAA1				1995	Arsenic	16	ug/L	10
06S 12E 25DAA1				1991	Arsenic	14	ug/L	10
09S 15E 28AAB1	Twin Falls	Household	Annual	1995	Atrazine, desethyl	0.011	ug/L	

Station	County	Water Use	Year Code	Sample Year	Display Name	Value	UOM	MCL
09S 15E 28AAB1				1995	Nitrate	11	mg/L	10
09S 15E 28AAB1				1991	Nitrate	18	mg/L	10
09S 15E 28AAB1				2004	Phenol	0.4	ug/L	
09S 15E 30CAD1	Twin Falls	Household	Annual	2004	Arsenic	19.4	ug/L	10
09S 15E 30CAD1				1999	Arsenic	16	ug/L	10
09S 15E 30CAD1				1995	Arsenic	16	ug/L	10
09S 15E 30CAD1				1991	Arsenic	17	ug/L	10
09S 15E 30CAD1				1995	Atrazine, desethyl	0.021	ug/L	
09S 16E 20BDD1	Twin Falls	Household	Regular	2004	Arsenic	20.2	ug/L	10
09S 16E 20BDD1				2003	Arsenic	19.5	ug/L	10
09S 16E 20BDD1				2002	Arsenic	21.5	ug/L	10
09S 16E 20BDD1				2001	Arsenic	18.2	ug/L	10
09S 16E 20BDD1				2000	Arsenic	18.9	ug/L	10
09S 16E 20BDD1				1999	Arsenic	19	ug/L	10
09S 16E 20BDD1				1998	Arsenic	18	ug/L	10
09S 16E 20BDD1				1996	Arsenic	20	ug/L	10
09S 16E 20BDD1				1995	Arsenic	20	ug/L	10
09S 16E 20BDD1				1992	Arsenic	20	ug/L	10
09S 16E 20BDD1				1996	Atrazine, desethyl	0.015	ug/L	
09S 16E 20BDD1				1999	Metolachlor	0.14	ug/L	
10S 13E 14DAC1	Twin Falls	Irrigation	Annual	2004	2,4-D	0.77	ug/L	70
10S 13E 14DAC1				2004	2,4-D	0.77	ug/L	70
10S 13E 14DAC1				2004	Arsenic	14.3	ug/L	10
10S 13E 14DAC1				1999	Arsenic	18	ug/L	10
10S 13E 14DAC1				1995	Arsenic	14	ug/L	10
10S 13E 14DAC1				1991	Arsenic	15	ug/L	10
10S 13E 14DAC1				2004	Atrazine	0.11	ug/L	3
10S 13E 14DAC1				2004	Atrazine	0.11	ug/L	3
10S 13E 14DAC1				1995	Atrazine, desethyl	0.036	ug/L	
10S 13E 25DDC1	Twin Falls	Public Supply	Regular	2004	Alachlor	0.11	ug/L	2
10S 13E 25DDC1				2004	Arsenic	20.6	ug/L	10
10S 13E 25DDC1				2003	Arsenic	21.5	ug/L	10
10S 13E 25DDC1				2002	Arsenic	22.3	ug/L	10

Station	County	Water Use	Year Code	Sample Year	Display Name	Value	UOM	MCL
10S 13E 25DDC1				2001	Arsenic	20	ug/L	10
10S 13E 25DDC1				2000	Arsenic	21.7	ug/L	10
10S 13E 25DDC1				1999	Arsenic	20	ug/L	10
10S 13E 25DDC1				1998	Arsenic	17	ug/L	10
10S 13E 25DDC1				1997	Arsenic	24	ug/L	10
10S 13E 25DDC1				1996	Arsenic	21	ug/L	10
10S 13E 25DDC1				1995	Arsenic	19	ug/L	10
10S 13E 25DDC1				1991	Arsenic	23	ug/L	10
10S 13E 25DDC1				2004	Atrazine	0.17	ug/L	3
10S 13E 25DDC1				2001	Atrazine, desethyl	0.016	ug/L	
10S 13E 25DDC1				1996	Atrazine, desethyl	0.028	ug/L	
10S 13E 25DDC1				1995	Atrazine, desethyl	0.096	ug/L	
10S 13E 25DDC1				2004	Caffeine	0.1	ug/L	
10S 13E 25DDC1				1998	Chloroform	7.4	ug/L	
10S 13E 25DDC1				1998	Dibromochloromethane	3.4	ug/L	
10S 13E 25DDC1				1998	Dichlorobromomethane	7.14	ug/L	
10S 13E 25DDC1				1991	Dichlorobromomethane	0.66	ug/L	
10S 13E 25DDC1				2003	Estradiol	2.98	ug/L	
10S 13E 25DDC1				2001	Metolachlor	0.005	ug/L	
10S 13E 25DDC1				2004	Phenol	0.3	ug/L	
10S 13E 25DDC1				2003	Phenol	0.3	ug/l	
10S 13E 25DDC1				2001	Prometon	0.004	ug/L	
10S 14E 01CAA1	Twin Falls	Household	Annual	2004	Arsenic	19.9	ug/L	10
10S 14E 01CAA1				1999	Arsenic	19	ug/L	10
10S 14E 01CAA1				1995	Arsenic	25	ug/L	10
10S 14E 01CAA1				1991	Arsenic	25	ug/L	10
10S 14E 01CAA1				1995	Atrazine, desethyl	0.006	ug/L	
10S 14E 01CAA1				2004	Fecal Coliform	4	col/100 ml	0
10S 15E 03ADD1	Twin Falls	Household	Annual	2004	Arsenic	20	ug/L	10
10S 15E 03ADD1				1999	Arsenic	21	ug/L	10
10S 15E 03ADD1				1995	Arsenic	19	ug/L	10
10S 15E 03ADD1				1991	Arsenic	19	ug/L	10
10S 15E 03ADD1				1995	Atrazine, desethyl	0.011	ug/L	
10S 16E 11DAA1	Twin Falls	Irrigation	Annual	2004	Arsenic	24.9	ug/L	10

Station	County	Water Use	Year Code	Sample Year	Display Name	Value	UOM	MCL
10S 16E 11DAA1				1999	Arsenic	30	ug/L	10
10S 16E 11DAA1				1995	Arsenic	32	ug/L	10
10S 16E 11DAA1				1991	Arsenic	30	ug/L	10
10S 16E 11DAA1				1995	Atrazine, desethyl	0.009	ug/L	
10S 16E 15DDC1	Twin Falls	Household	Annual	2004	Arsenic	14.3	ug/L	10
10S 16E 15DDC1				1999	Arsenic	18	ug/L	10
10S 16E 15DDC1				1995	Arsenic	15	ug/L	10
10S 16E 15DDC1				1991	Arsenic	15	ug/L	10
10S 16E 15DDC1				1995	Atrazine, desethyl	0.003	ug/L	
10S 16E 24DDD1	Twin Falls	Household	Regular	2004	Arsenic	11.9	ug/L	10
10S 16E 24DDD1				2003	Arsenic	13.5	ug/L	10
10S 16E 24DDD1				2002	Arsenic	14.7	ug/L	10
10S 16E 24DDD1				2001	Arsenic	12.1	ug/L	10
10S 16E 24DDD1				2000	Arsenic	13	ug/L	10
10S 16E 24DDD1				1999	Arsenic	14	ug/L	10
10S 16E 24DDD1				1998	Arsenic	13	ug/L	10
10S 16E 24DDD1				1997	Arsenic	13	ug/L	10
10S 16E 24DDD1				1996	Arsenic	14	ug/L	10
10S 16E 24DDD1				1994	Arsenic	15	ug/L	10
10S 16E 24DDD1				1996	Atrazine, desethyl	0.003	ug/L	
10S 16E 24DDD1				1998	Dichlorodifluoromethane	0.65	ug/L	
10S 16E 24DDD1				2003	Estradiol	2.89	ug/L	
10S 16E 24DDD1				2003	Phenol	0.67	ug/l	
10S 16E 32DCD1	Twin Falls	Household	Regular	1997	Alpha, Gross (as Thorium)	21.4	pCi/l	15
10S 16E 32DCD1				2004	Arsenic	11	ug/L	10
10S 16E 32DCD1				2003	Arsenic	11.1	ug/L	10
10S 16E 32DCD1				2002	Arsenic	10.8	ug/L	10
10S 16E 32DCD1				2001	Arsenic	10.3	ug/L	10
10S 16E 32DCD1				2000	Arsenic	10.5	ug/L	10
10S 16E 32DCD1				1999	Arsenic	11	ug/L	10
10S 16E 32DCD1				1996	Atrazine, desethyl	0.003	ug/L	
10S 16E 32DCD1				1994	Uranium	18	ug/L	
10S 17E 13CCA1	Twin Falls	Household	Annual	2004	Arsenic	13.9	ug/L	10

Station	County	Water Use	Year Code	Sample Year	Display Name	Value	UOM	MCL
10S 17E 13CCA1				1999	Arsenic	17	ug/L	10
10S 17E 13CCA1				1995	Arsenic	14	ug/L	10
10S 17E 13CCA1				1991	Arsenic	13	ug/L	10
10S 17E 13CCA1				1995	Atrazine, desethyl	0.01	ug/L	
10S 17E 13CCA1				1995	Diazinon	0.007	ug/L	
10S 17E 33BAB1	Twin Falls	Public Supply	Regular	1998	Alpha, Gross (as Thorium)	15.2	pCi/l	15
10S 17E 33BAB1				2004	Arsenic	12.3	ug/L	10
10S 17E 33BAB1				2003	Arsenic	12.5	ug/L	10
10S 17E 33BAB1				2002	Arsenic	13.1	ug/L	10
10S 17E 33BAB1				2001	Arsenic	11.9	ug/L	10
10S 17E 33BAB1				2000	Arsenic	12.1	ug/L	10
10S 17E 33BAB1				1999	Arsenic	12	ug/L	10
10S 17E 33BAB1				1998	Arsenic	12	ug/L	10
10S 17E 33BAB1				1996	Arsenic	11	ug/L	10
10S 17E 33BAB1				1993	Arsenic	13	ug/L	10
10S 17E 33BAB1				1990	Arsenic	12	ug/L	10
10S 17E 33BAB1				1999	Atrazine, desethyl	0.007	ug/L	
11S 14E 09ABA1	Twin Falls	Household	Annual	2004	Arsenic	12	ug/L	10
11S 14E 09ABA1				1999	Arsenic	32	ug/L	10
11S 14E 09ABA1				1995	Arsenic	38	ug/L	10
11S 14E 09ABA1				1991	Arsenic	32	ug/L	10
11S 14E 09ABA1				1990	Arsenic	25	ug/L	10
11S 14E 09ABA1				1995	Atrazine, desethyl	0.05	ug/L	
11S 14E 09ABA1				1991	Nitrate	12	mg/L	10
11S 18E 01ABB1	Twin Falls	Household	Annual	2004	Alachlor	0.06	ug/L	2
11S 18E 01ABB1				1995	Atrazine, desethyl	0.006	ug/L	
12S 13E 26BCC1	Twin Falls	Household	Annual	2004	Arsenic	18	ug/L	10
12S 13E 26BCC1				1999	Arsenic	20	ug/L	10
12S 13E 26BCC1				1995	Arsenic	16	ug/L	10
12S 13E 26BCC1				1991	Arsenic	14	ug/L	10
12S 13E 26BCC1				1995	Atrazine, desethyl	0.003	ug/L	
12S 13E 26BCC1				2004	Gross Alpha	17.39	pCi/L	15
12S 13E 26BCC1				2004	Nitrate	15.3	mg/L	10

Station	County	Water Use	Year Code	Sample Year	Display Name	Value	UOM	MCL
12S 13E 26BCC1				1999	Nitrate	19.2	mg/L	10
12S 13E 26BCC1				1995	Nitrate	13	mg/L	10
12S 13E 26BCC1				1991	Nitrate	12	mg/L	10
12S 16E 34BCB2	Twin Falls	Household	Annual	2004	Arsenic	13.8	ug/L	10
12S 16E 34BCB2				1999	Arsenic	14	ug/L	10
12S 16E 34BCB2				1995	Arsenic	17	ug/L	10
12S 16E 34BCB2				1992	Arsenic	15	ug/L	10
12S 16E 34BCB2				1991	Arsenic	15	ug/L	10
12S 16E 34BCB2				1995	Atrazine, desethyl	0.026	ug/L	
10N 05W 09ACDD1	Washington	Household	Annual	2004	Alachlor	0.85	ug/L	2
10N 05W 09ACDD1				2004	Arsenic	15.9	ug/L	10
10N 05W 09ACDD1				2004	Atrazine	0.07	ug/L	3
10N 05W 09ACDD1				2004	Nitrate	18.6	mg/L	10
10N 05W 17ABBB1	Washington	Commercial	Annual	2004	Alachlor	0.07	ug/L	2
10N 05W 17ABBB1				2004	Atrazine	0.06	ug/L	3
10N 05W 17ABBB1				2004	Bromacil	0.5	ug/L	
10N 05W 17ABBB1				2004	Gross Alpha	45.47	pCi/L	15
10N 05W 17ABBB1				2004	Nitrate	25.3	mg/L	10
10N 05W 17ABBB1				2004	Phenol	0.8	ug/L	
10N 05W 17ACC1	Washington	Commercial	New	2004	Alachlor	0.28	ug/L	2
11N 04W 34CBC1	Washington	Household	Annual	2004	Arsenic	51.2	ug/L	10
11N 04W 34CBC1				1999	Arsenic	48	ug/L	10
11N 04W 34CBC1				1995	Arsenic	52	ug/L	10
11N 04W 34CBC1				1991	Arsenic	49	ug/L	10
11N 04W 34CBC1				1991	Methylene chloride	3.74	ug/L	
11N 05W 29CBB1	Washington	Irrigation	Regular	2004	Arsenic	19.8	ug/L	10
11N 05W 29CBB1				2003	Arsenic	20.3	ug/L	10
11N 05W 29CBB1				2002	Arsenic	20.3	ug/L	10
11N 05W 29CBB1				2001	Arsenic	19.3	ug/L	10
11N 05W 29CBB1				2000	Arsenic	20.4	ug/L	10
11N 05W 29CBB1				1999	Arsenic	20	ug/L	10

