



Preliminary transient recharge and pumping for irrigated and semi-irrigated lands

Presented by Jennifer Sukow, P.E., P.G.
October 2, 2014

Transient recharge and pumping for irrigated and semi-irrigated lands

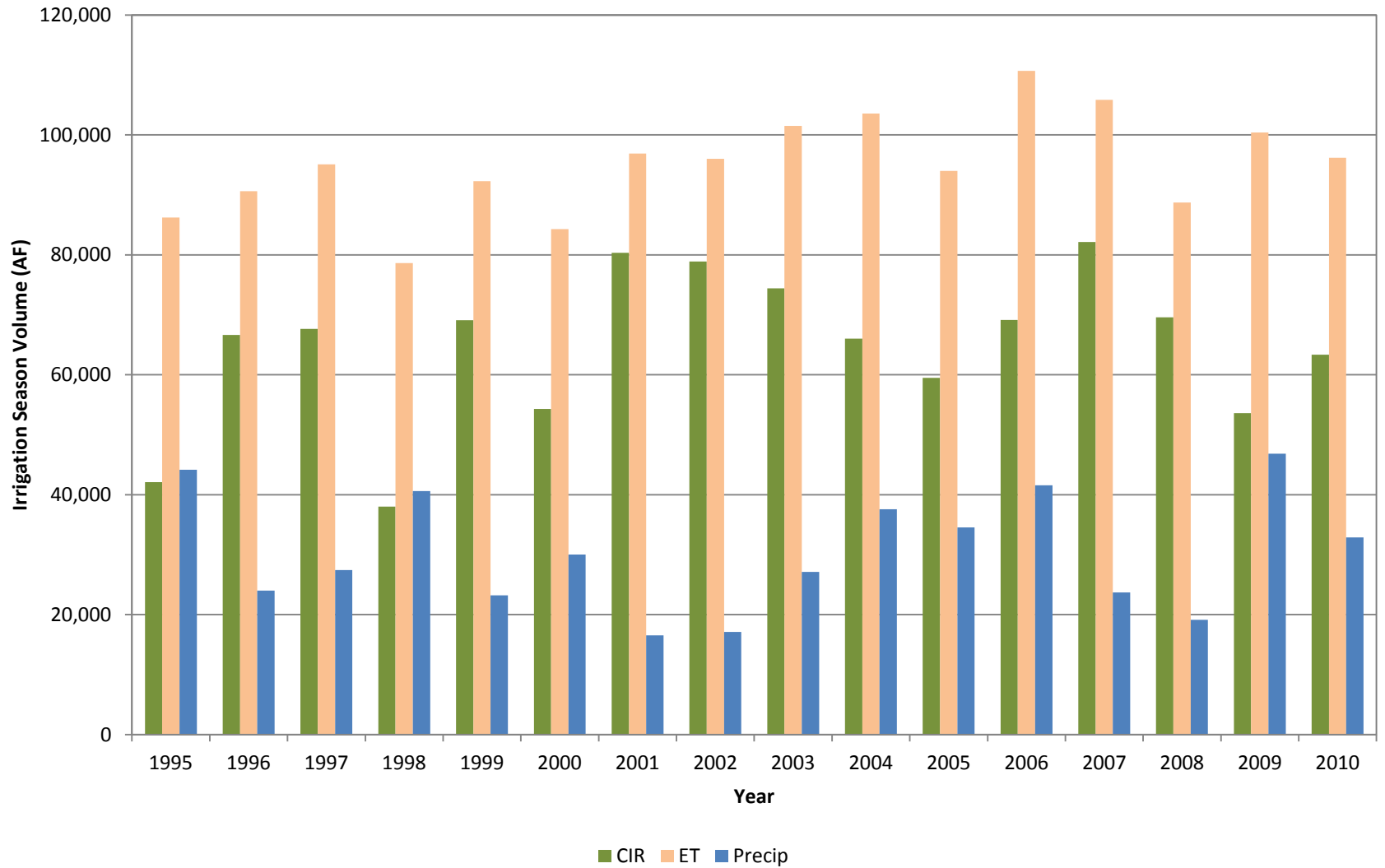
- ALL VALUES ARE PRELIMINARY DATA FROM 9/6/2014
- Annual volumes for calendar years 1995-2010
 - Volumes summed over model domain
 - Area classified as irrigated or semi-irrigated
 - ET, precipitation, and crop irrigation requirement
 - Surface water and groundwater diversions
 - Fate of diverted water
 - Net recharge
- Monthly volumes for average, wet, and dry years
- Monthly time-series for 1995-2010

Irrigated and semi-irrigated acres

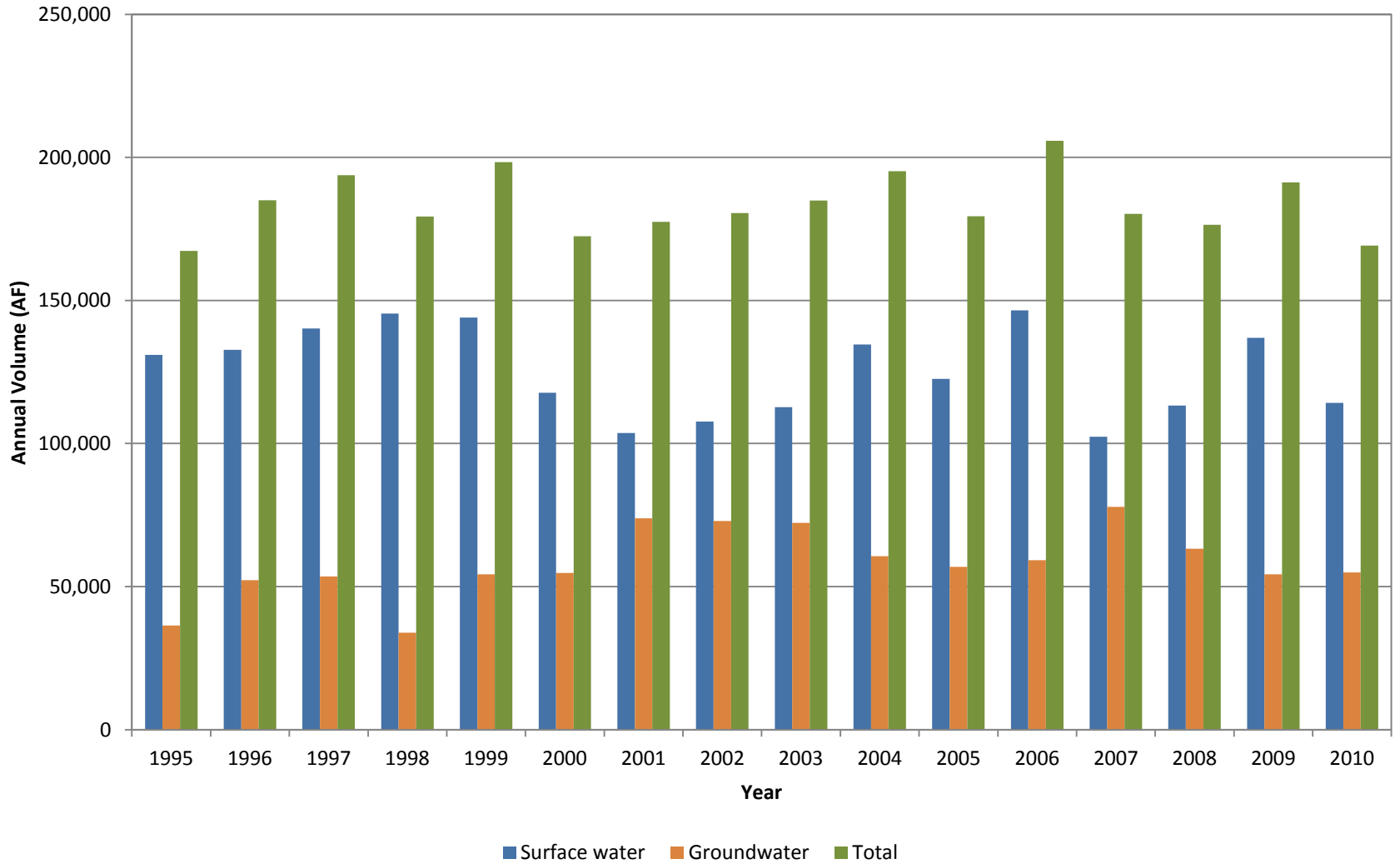


■ Irrigated and semi-irrigated acres

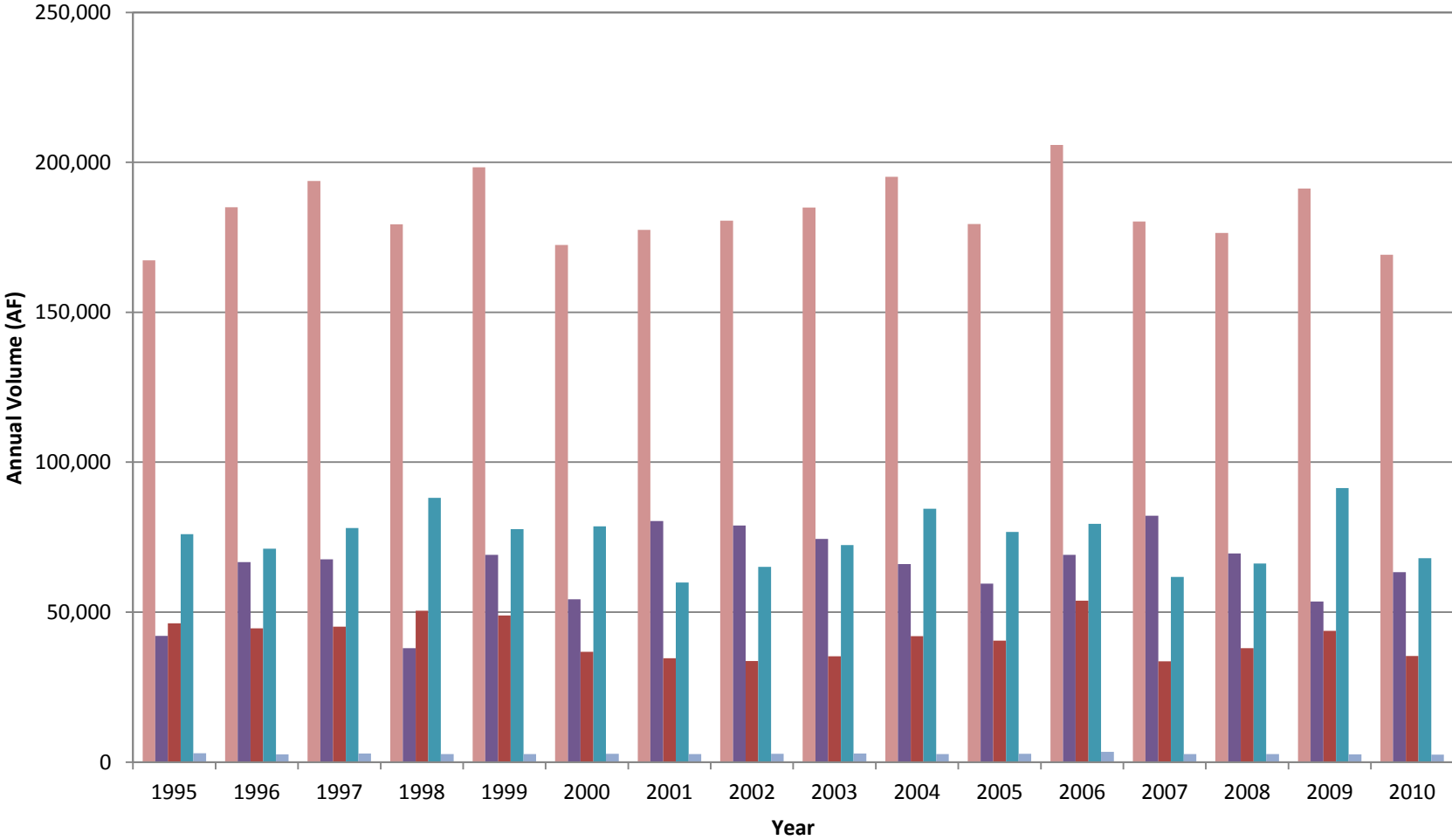
Crop irrigation requirement (April – October)



Annual diversions

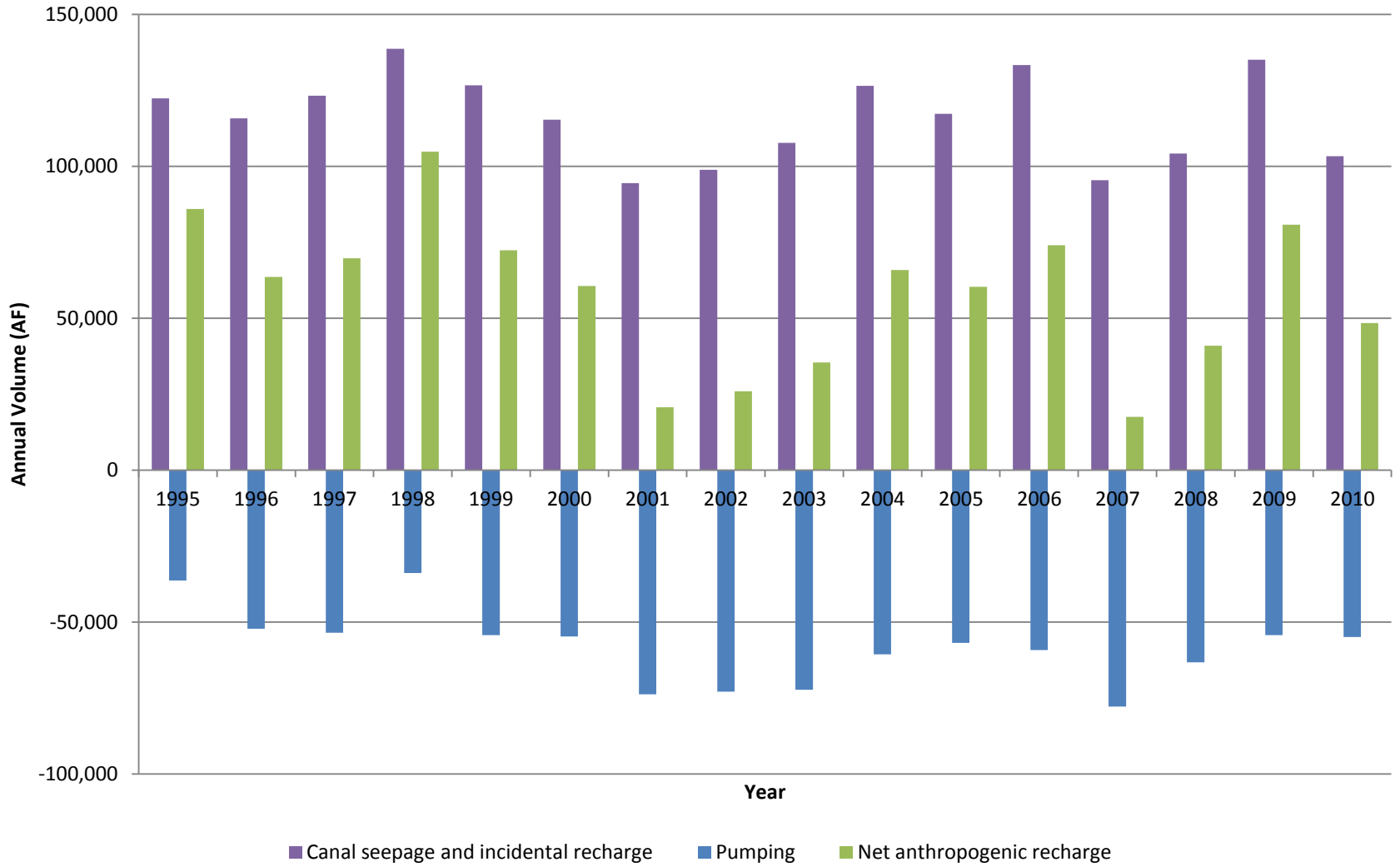


Fate of diverted water by year

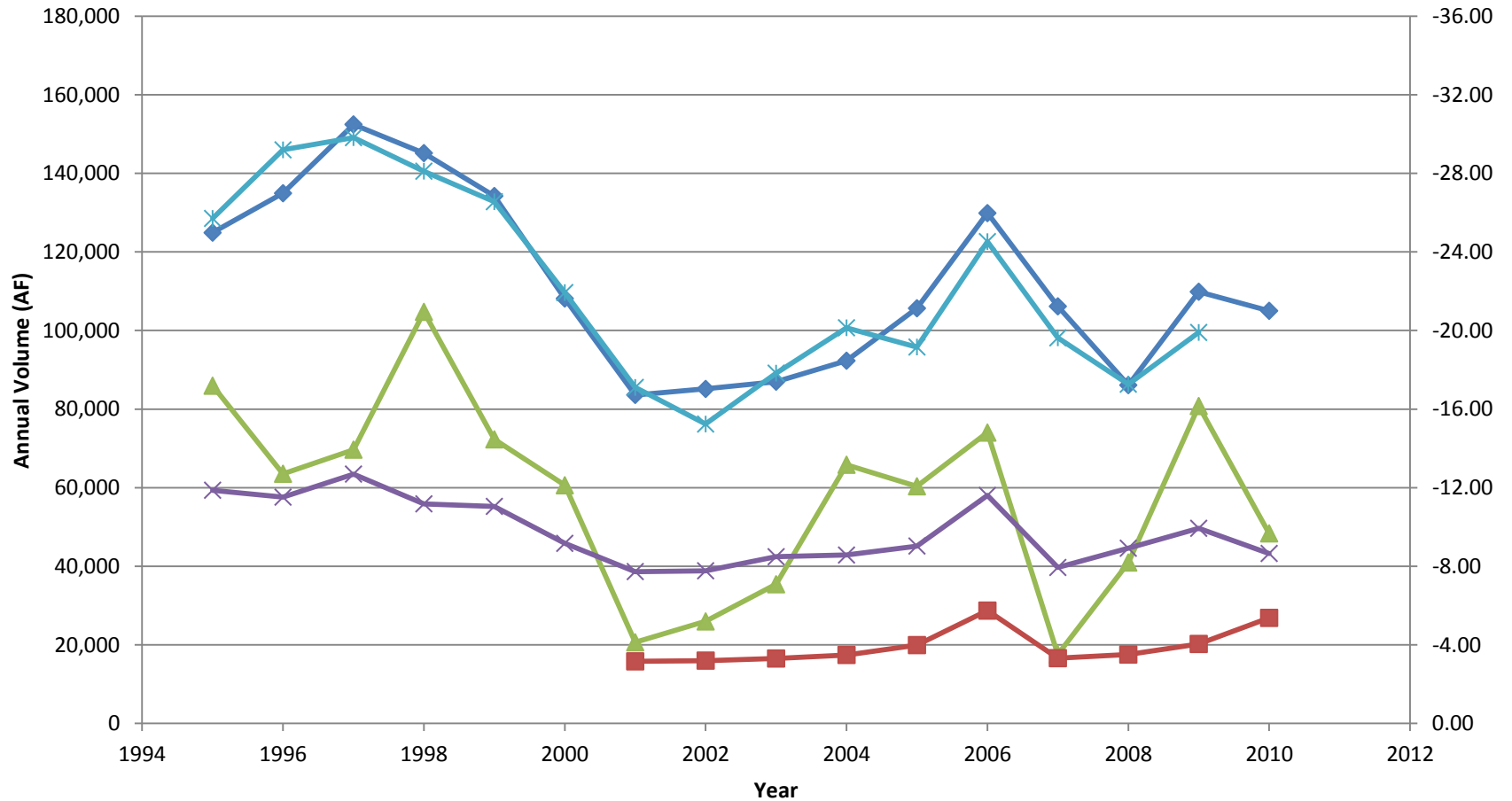


■ Total diversions
 ■ CIR
 ■ Canal Seepage
 ■ Incidental Recharge
 ■ Wastewater

Annual net anthropogenic recharge



Annual net anthropogenic recharge vs. selected reach gains

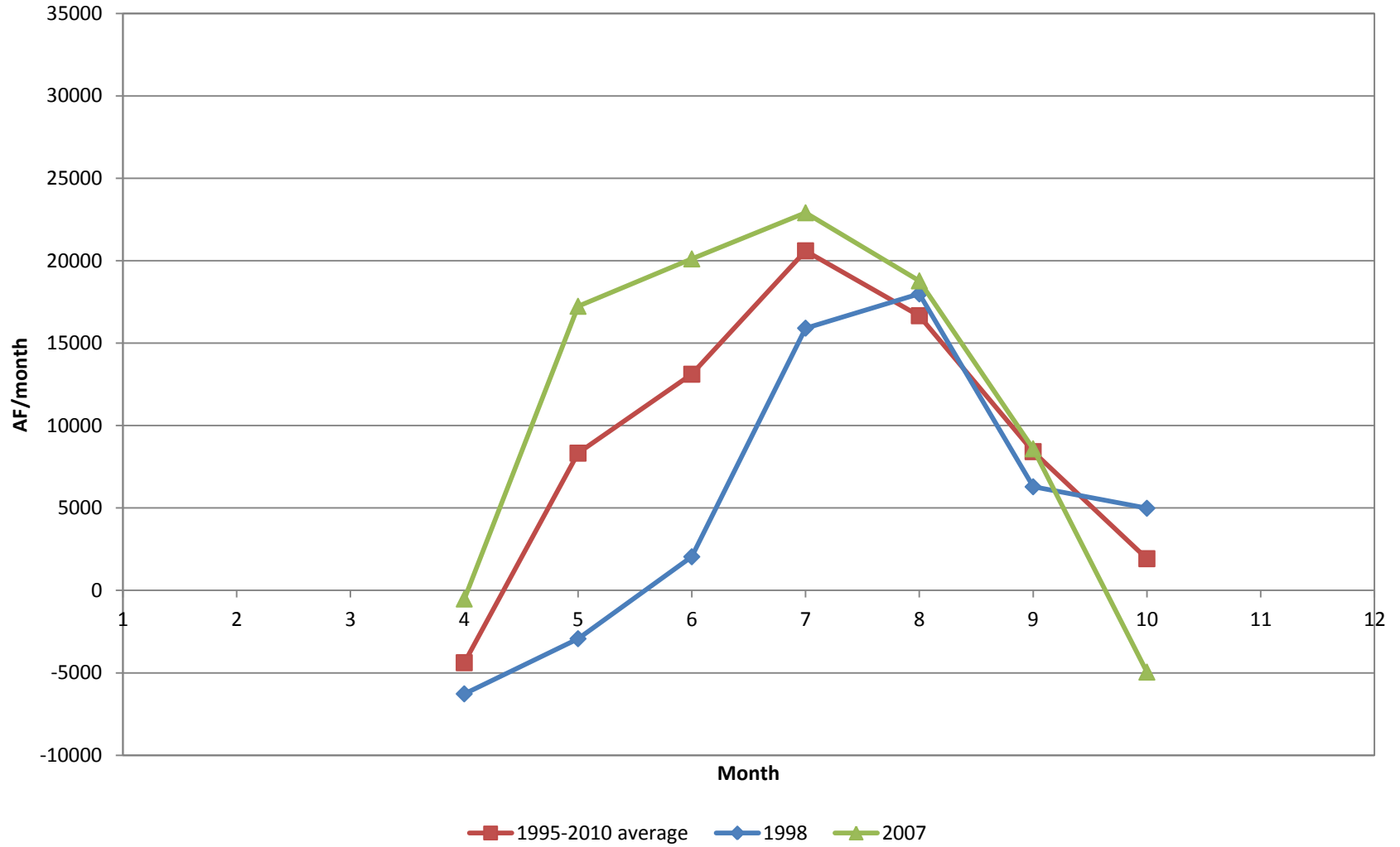


▲ Net anthropogenic recharge
× Near Ketchum to Hailey reach gain

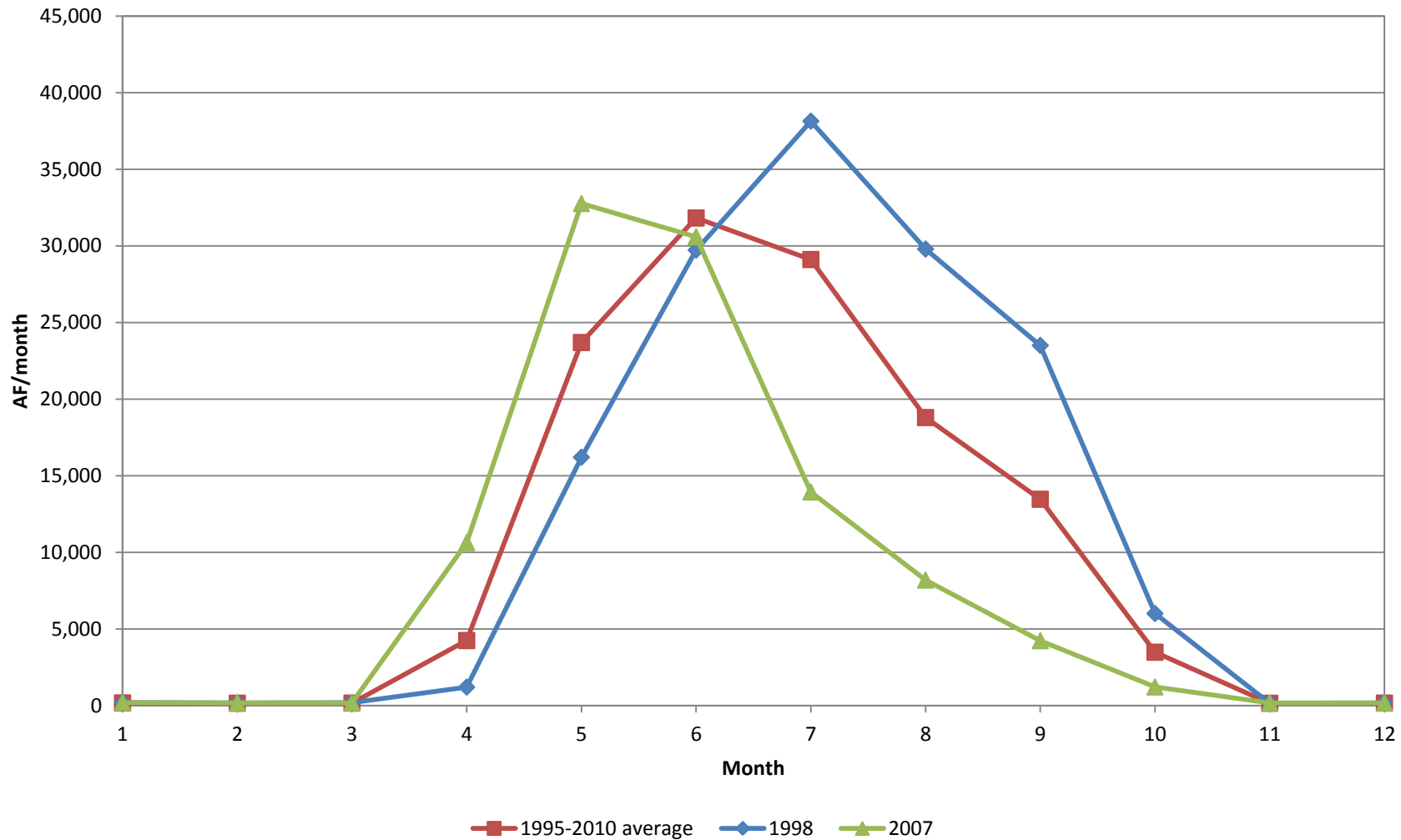
◆ Silver Creek abv Sportsman reach gain
✱ 01S 18E 14AAB1 water level

■ Willow Creek reach gain

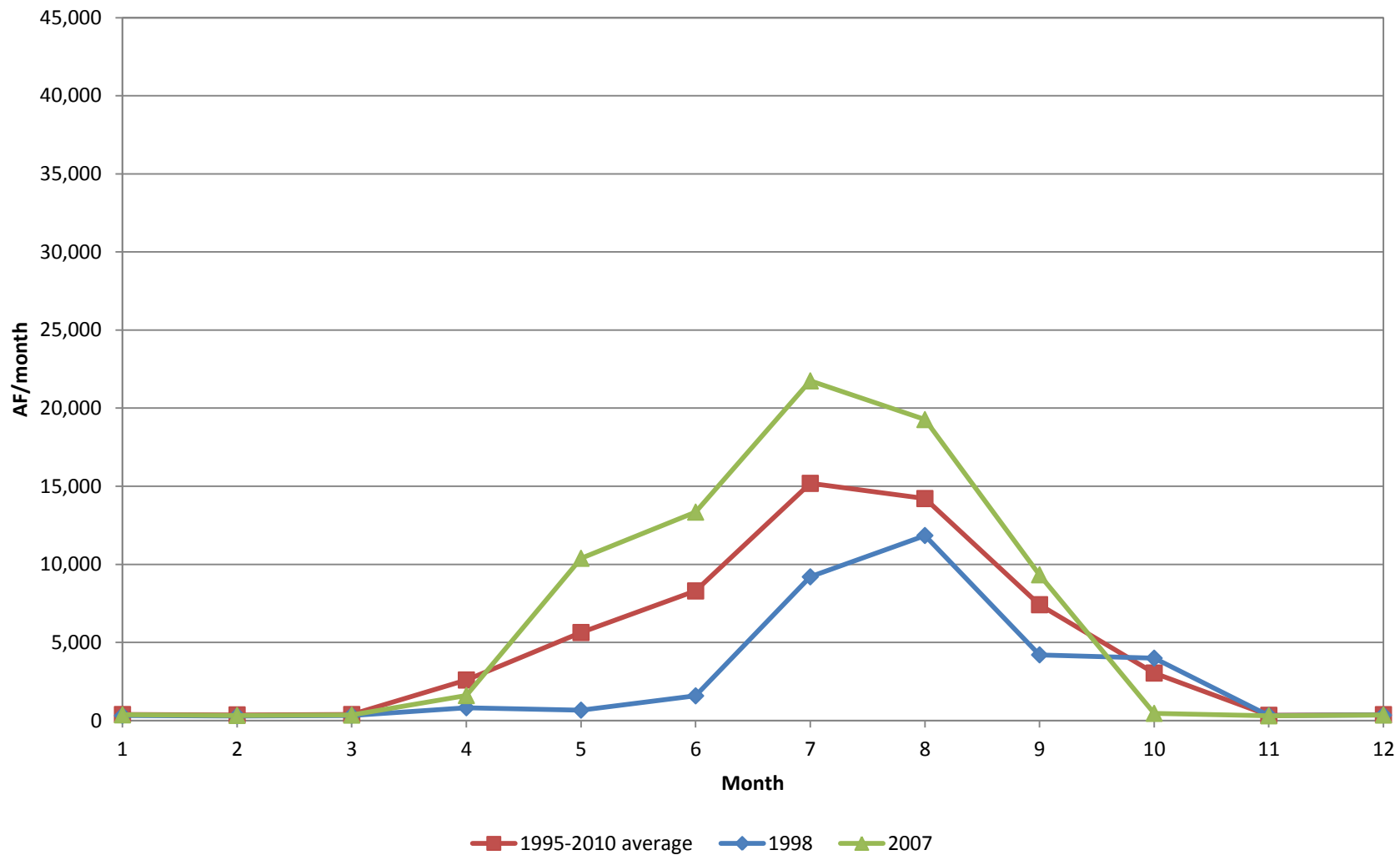
Monthly crop irrigation requirement



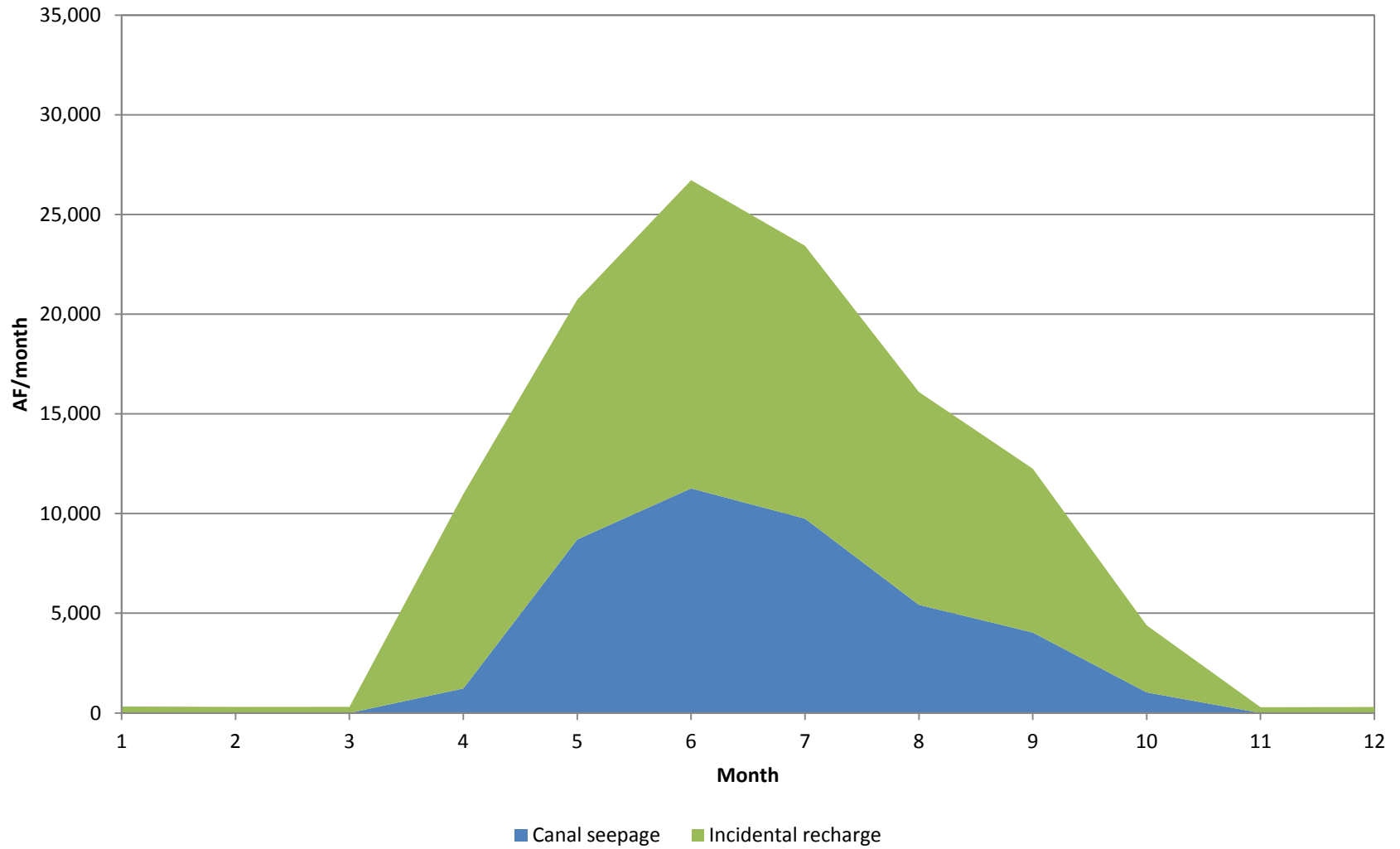
Monthly surface water diversions



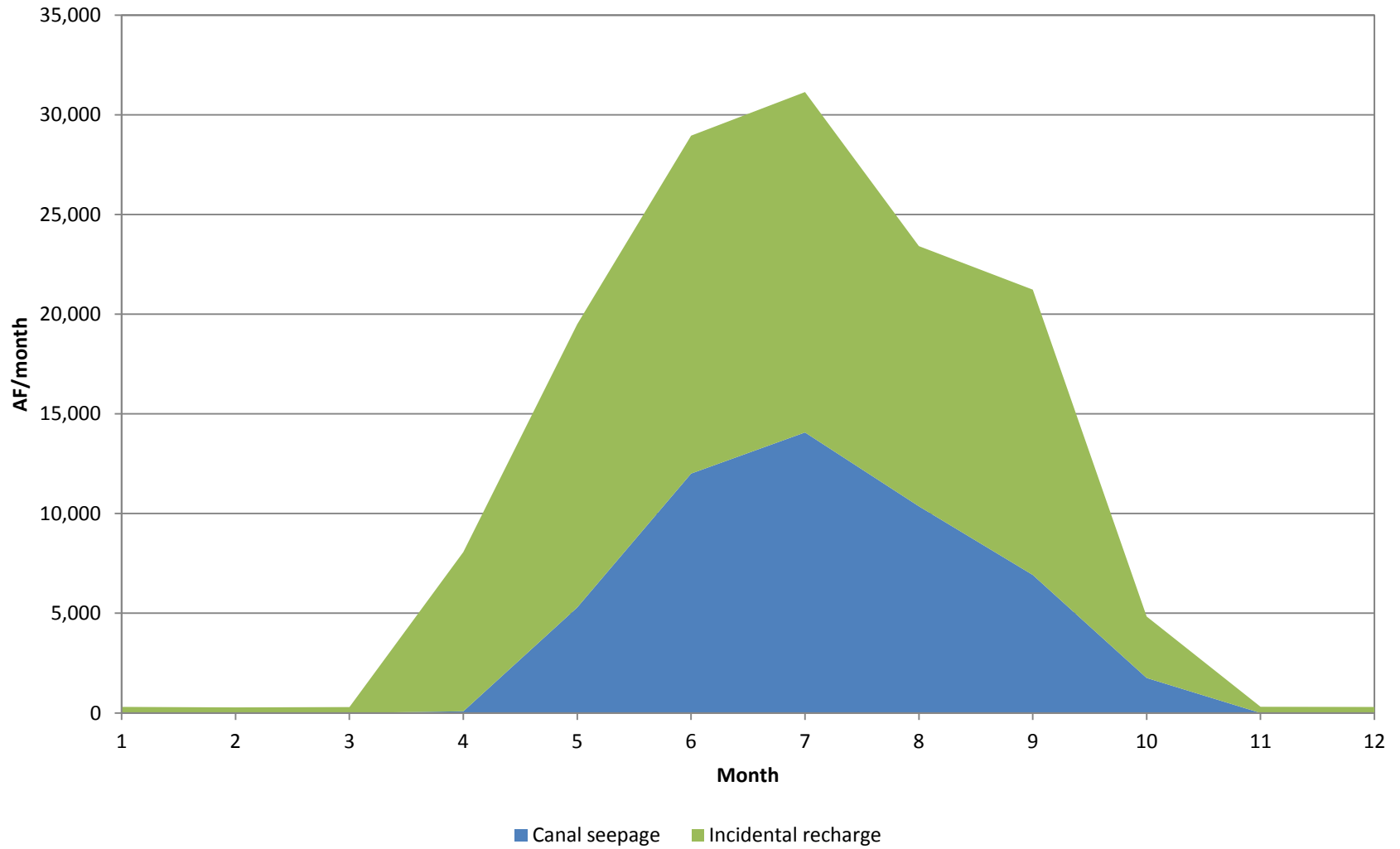
Monthly groundwater diversions



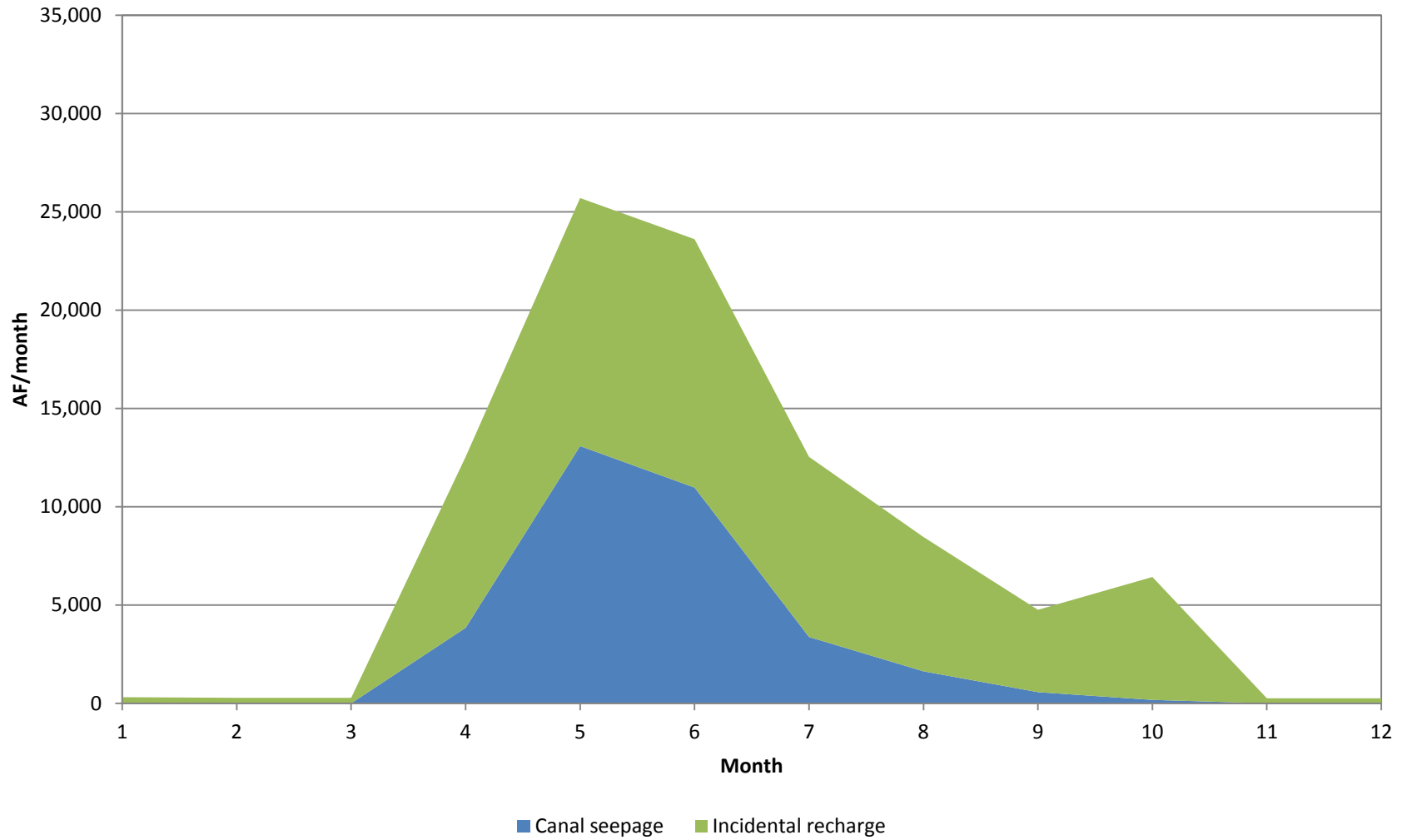
Canal seepage and incidental recharge (1995-2010 average)



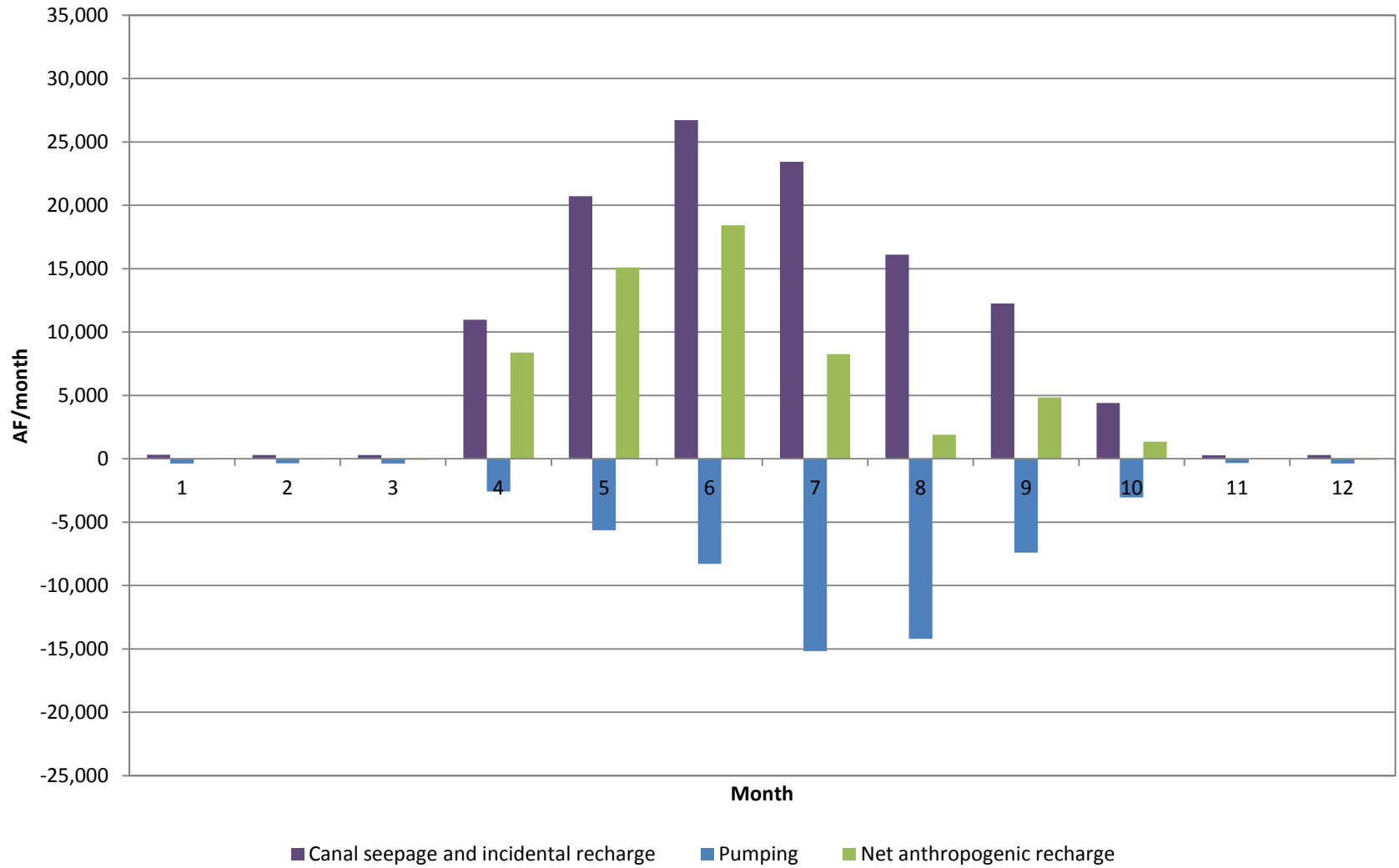
Canal seepage and incidental recharge (1998)



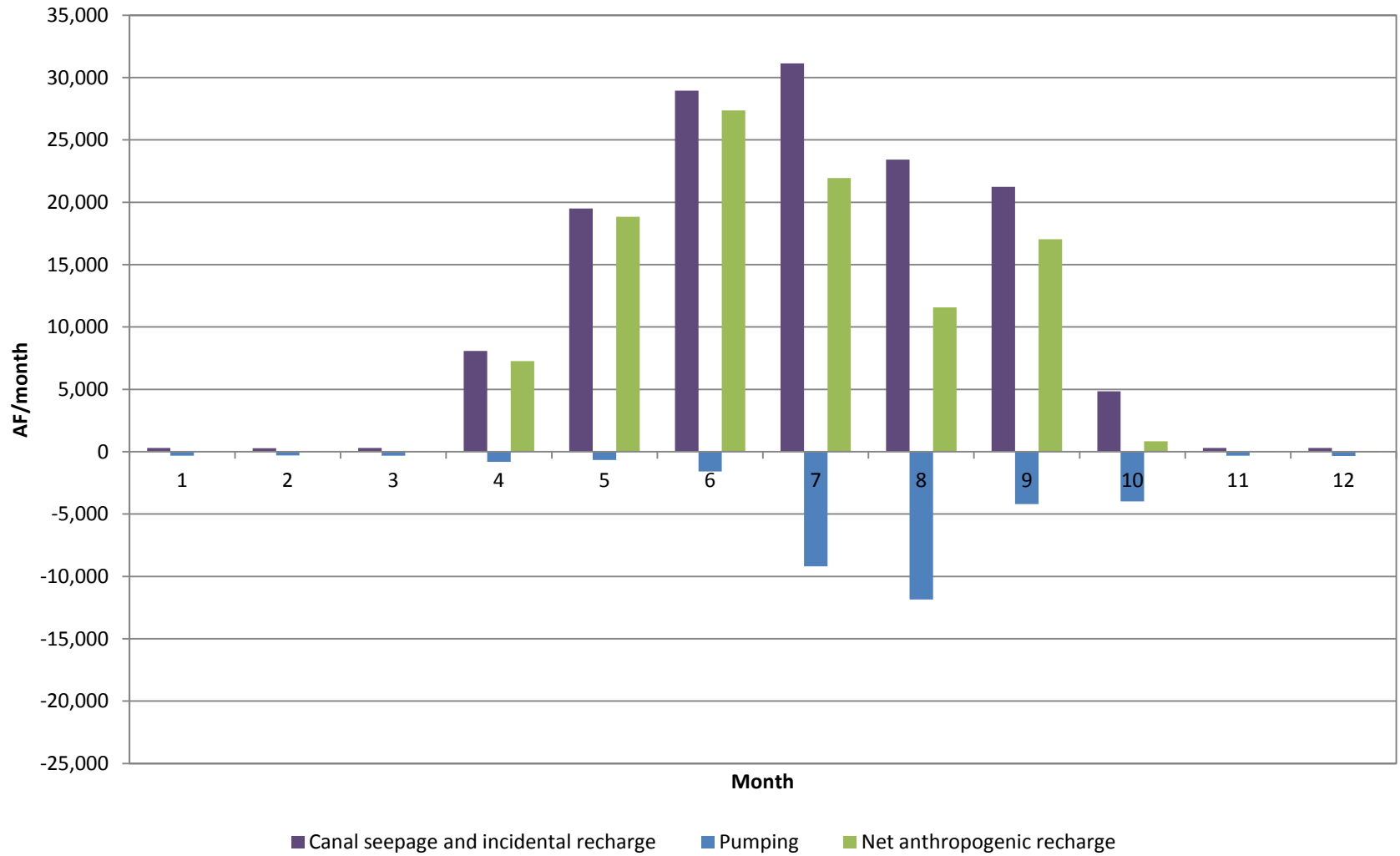
Fate of diverted water (2007)



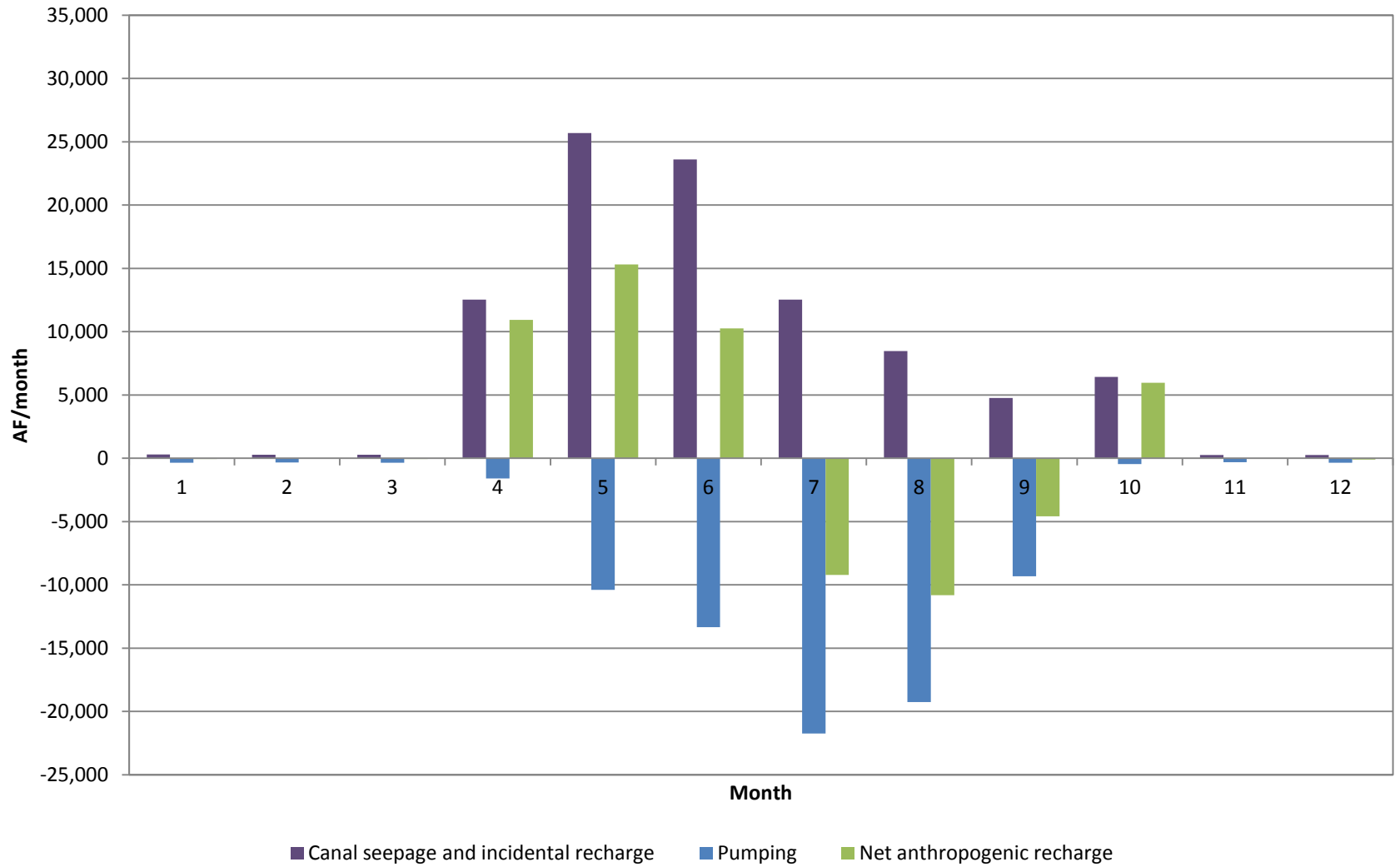
Monthly net anthropogenic recharge (1995-2010 average)



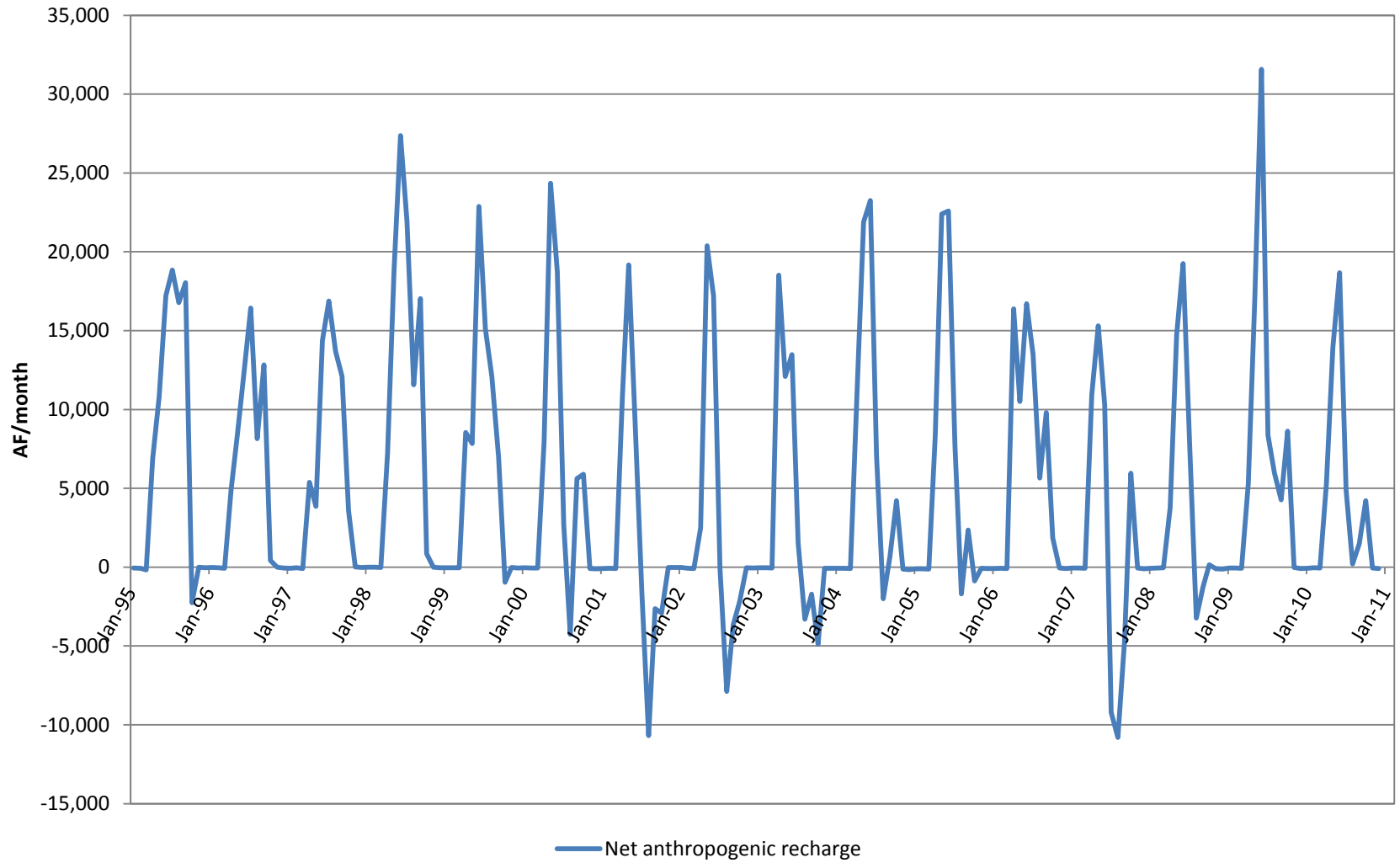
Monthly net anthropogenic recharge (1998)



Monthly net anthropogenic recharge (2007)



Monthly net anthropogenic recharge



Monthly net anthropogenic recharge

