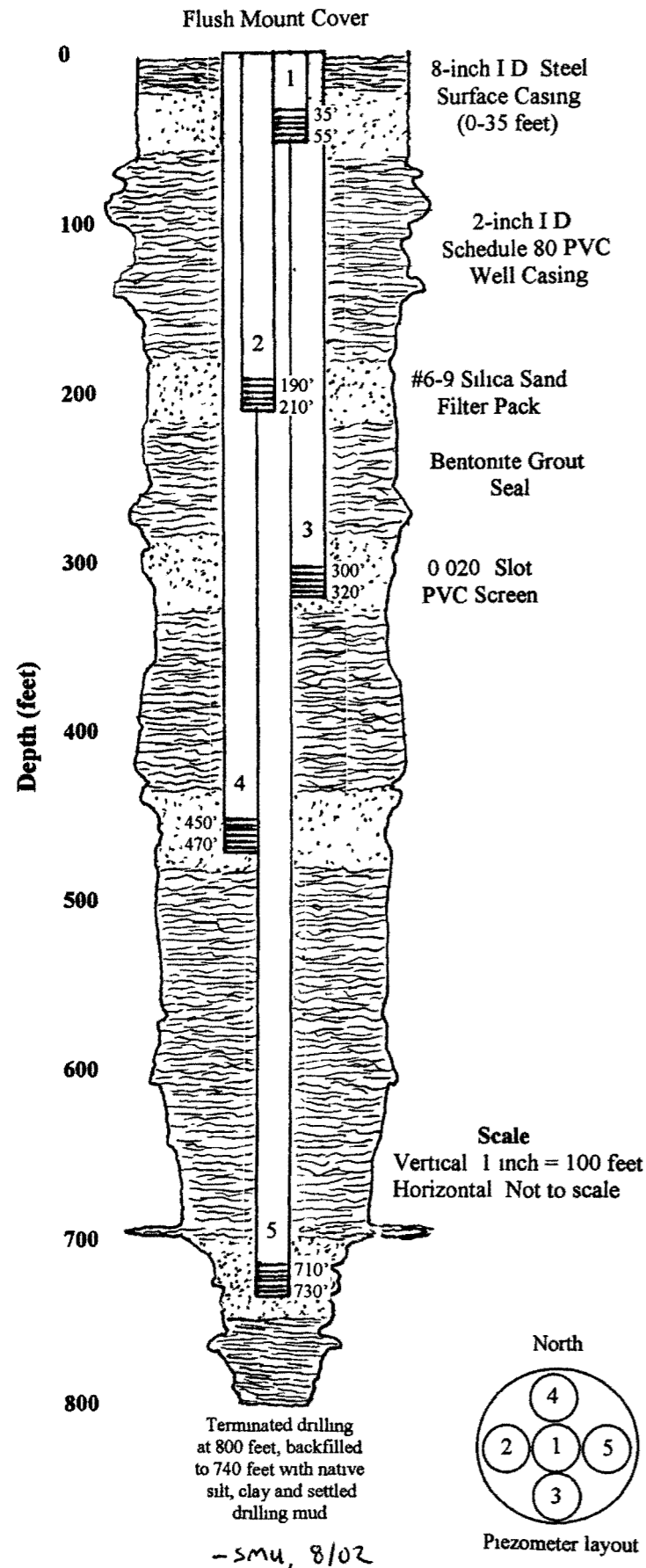


Municipal Park Monitoring Well (TVHP #4)

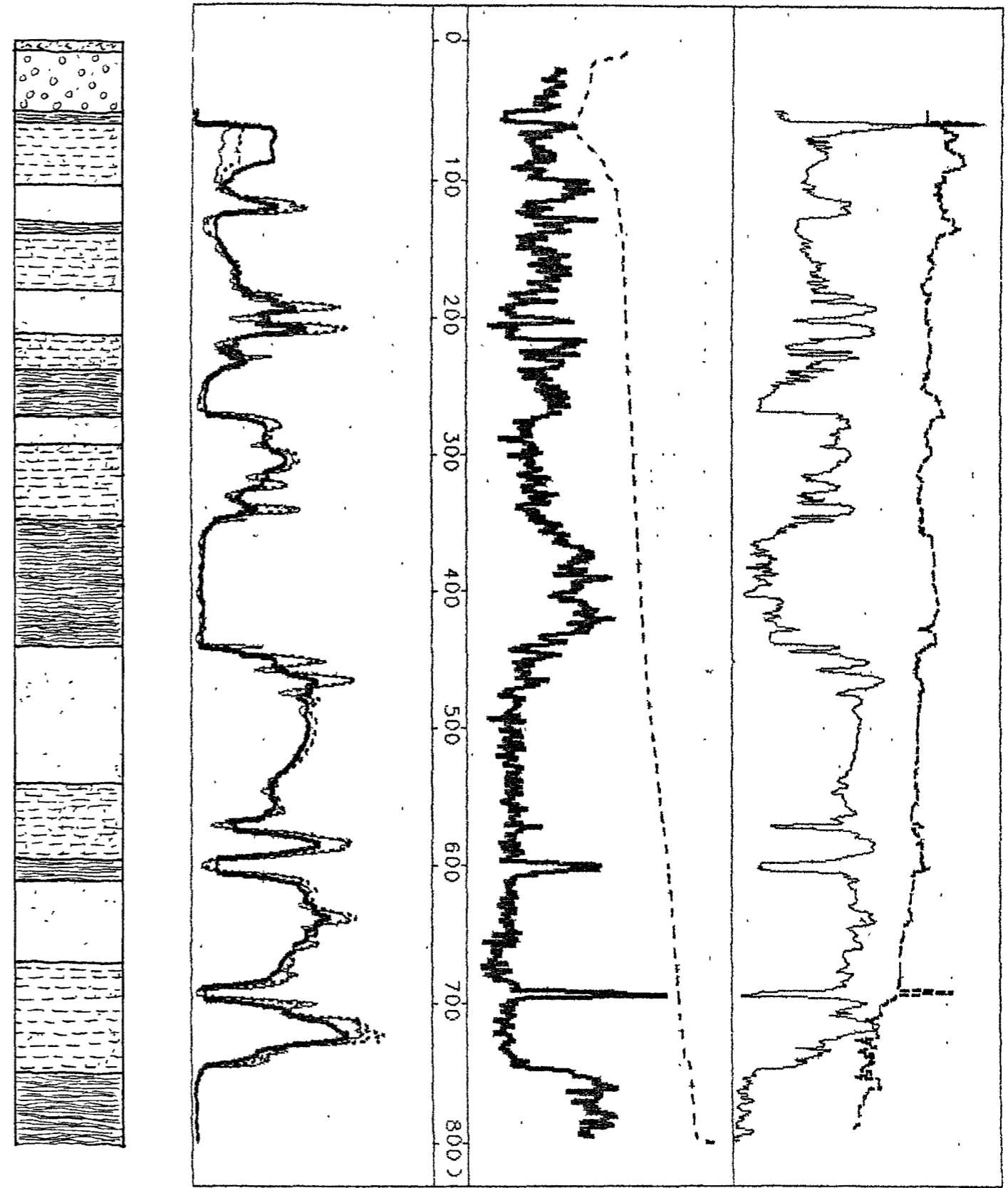
Well Construction Details



Lithologic Log

0 - 8	Topsoil/fill/sand and gravel; grayish brown (2.5Y 5/2)
8 - 55	Sand with gravel, light brownish gray (2.5Y 6/2); Possibly cemented at 37 - 38 feet, then >H ₂ O
55 - 60	V fine sand (yellowish-brown, 10YR 5/4) interbedded with clay (dark gray, 5Y 4/4) "Brown clay" in driller's report
60 - 105	Fine to coarse sand with clay, gray (5Y 6/1), Fast drilling (60 feet/hour)
105 - 130	Fine to coarse sand, light olive-gray (5Y 6/2)
130 - 140	Clay, v dark gray (10YR 3/1); some wood fragments,
140 - 180	Sandy clay, fine to medium, greenish-gray (5GY 5/1)
180 - 215	Sand, interbedded fine to coarse, olive-gray (5Y 5/2)
215 - 240	Sandy clay, v dark gray (5Y 3/1 - 4/1)
240 - 270	Clay, v dark gray (5Y 4/1)
270 - 295	Sand, fine to coarse; olive-gray (5Y 5/2)
295 - 345	Sand, fine to coarse, interbedded with clay, dark gray (5Y 5/1) Fast drilling (averaging 90 feet/hour from 330 - 530 feet)
345 - 440	Clay; dark gray (10YR 4/1)
440 - 540	Sand, fine to coarse, dark gray (5Y 4/1)
540 - 595	Sand, fine to coarse, interbedded with some clay, dark gray (5Y 4/1), Slower drilling (30 feet/hour)
595 - 610	Clay/sandy clay, dark gray (5Y 4/1)
610 - 670	Sand, fine to coarse, dark gray (5Y 4/1) Slow drilling (35 feet/hour), Caliper log suggests evidence of bit wear
670 - 750	Sand, sandy clay, possible sandstone/mudstone, dark gray (5Y 4/1); very slow drilling (less than 20 feet/hour)
750 - 800	Clay; dark gray (5Y 4/1)

Geophysical Logs



Drilled by Stevens and Son Well Drilling, Inc
 - Started drilling 6/18/02, well completed on 7/29/02
 - Cable tool rig 0-59 feet, mud rotary 59-800 feet

Geophysical logging by L. Pearson, Hydro Logic, Inc
 - Well logged on 6/27/02

