

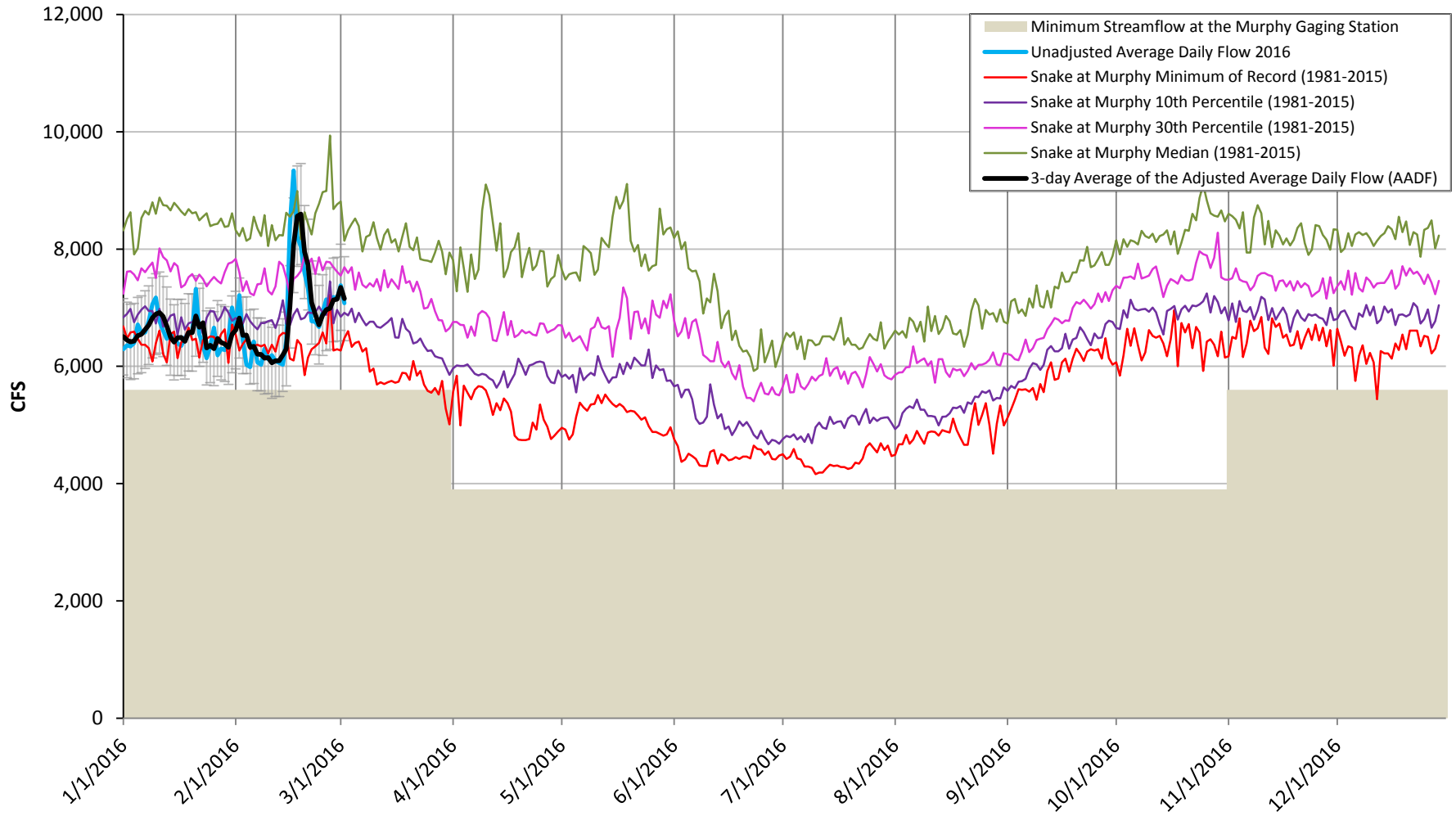
# State of the AADF

Swan Falls Technical Work Group

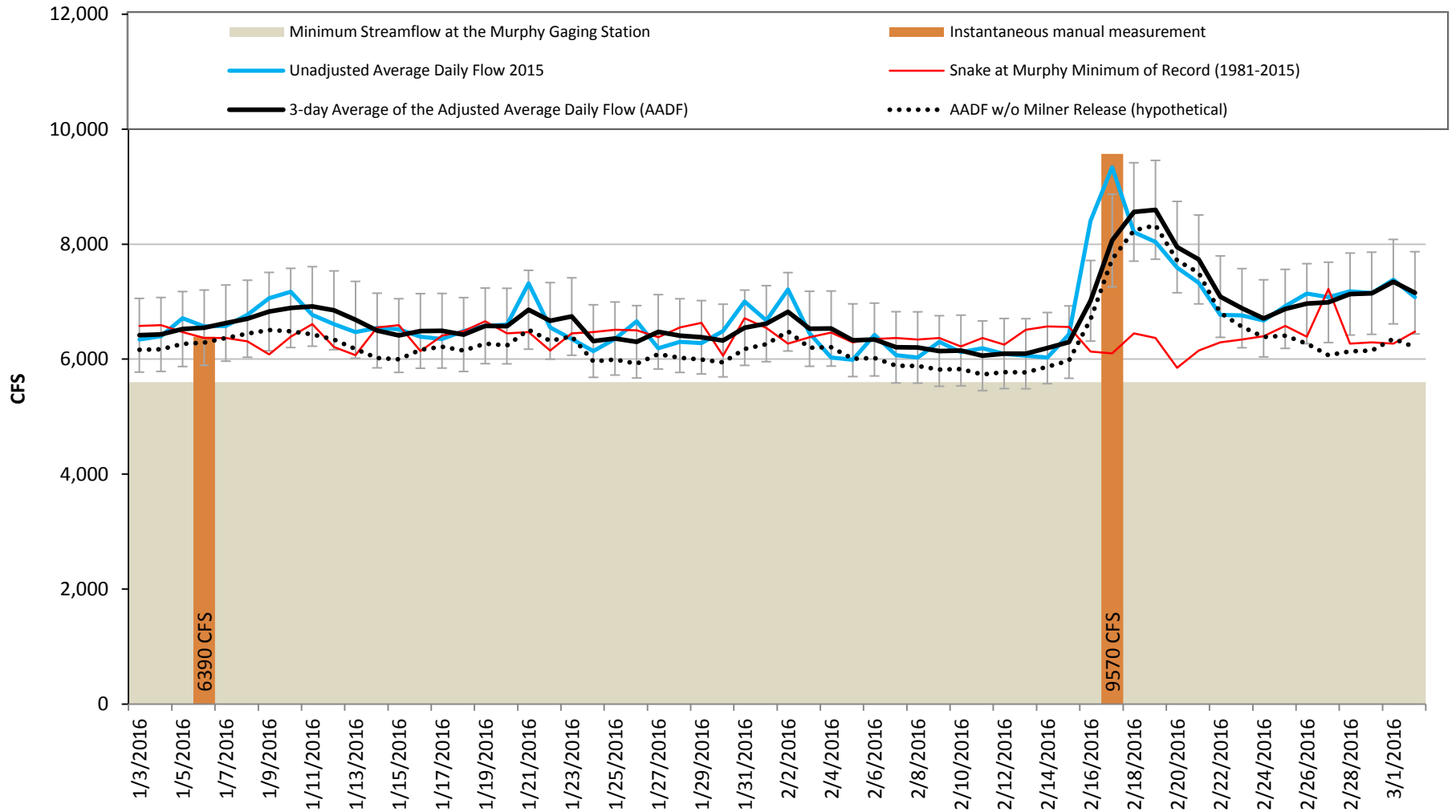
March 3, 2016



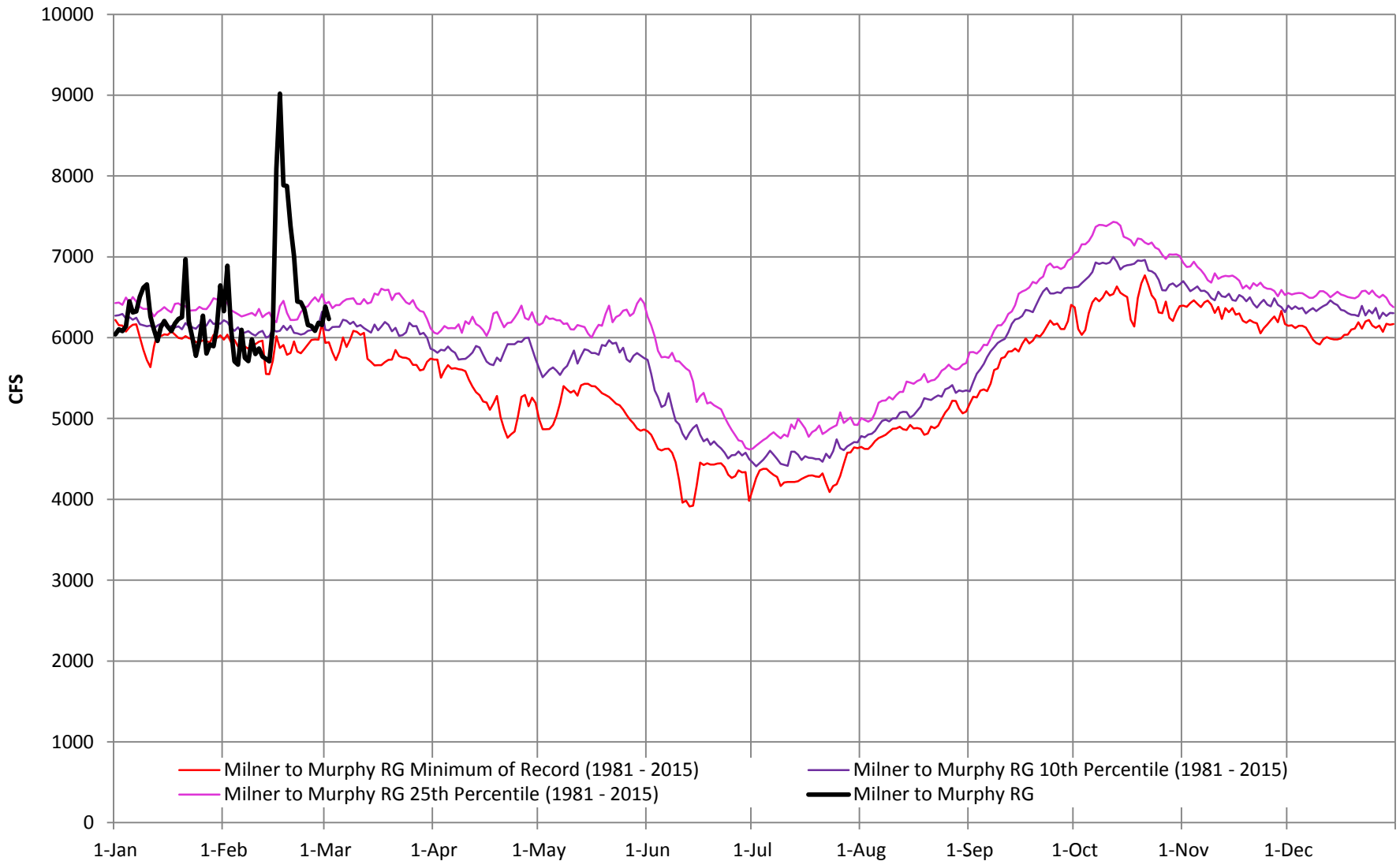
## SUMMARY HYDROGRAPH SNAKE RIVER NR MURPHY 1981-2016



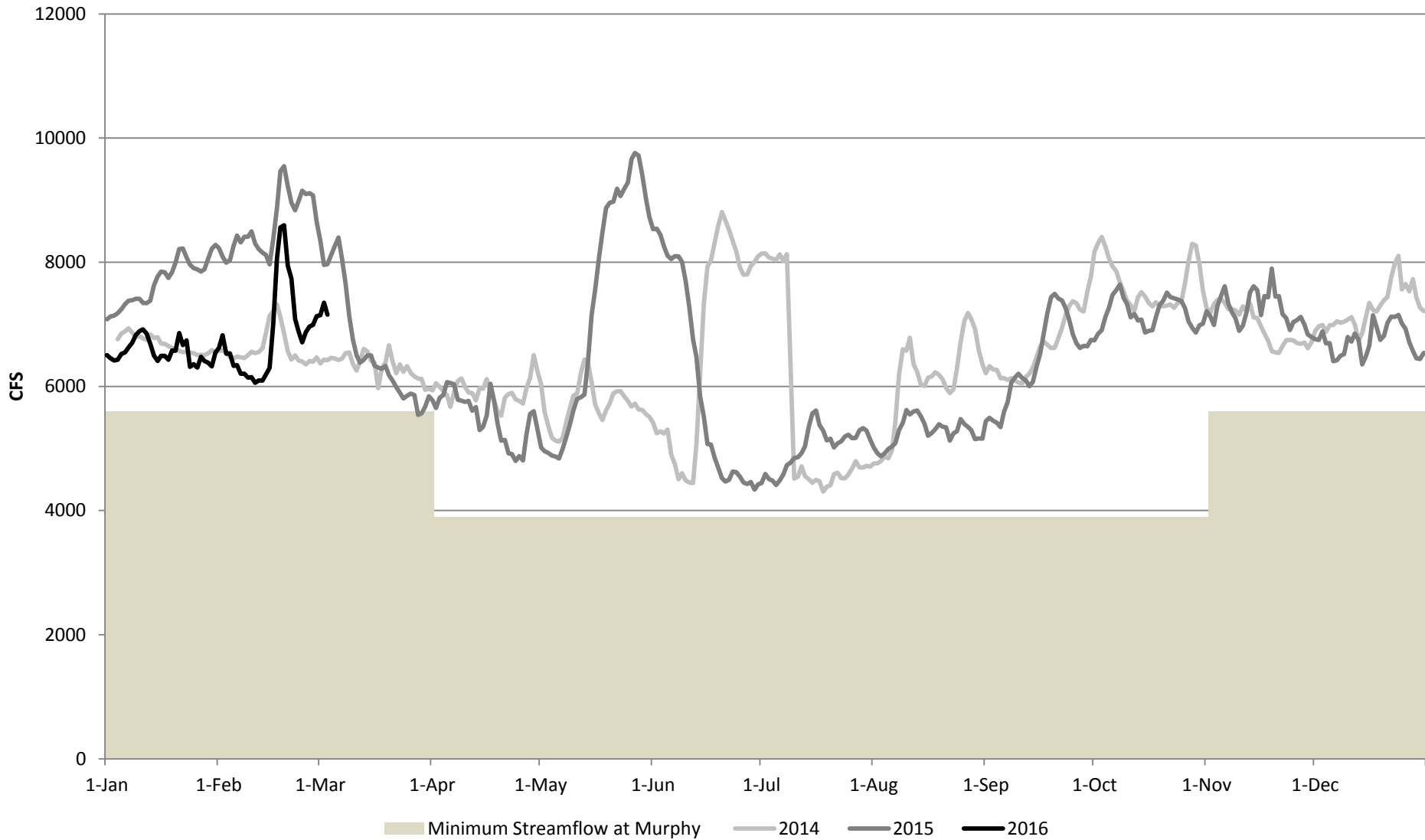
## 2-MONTH SUMMARY HYDROGRAPH SNAKE RIVER NR MURPHY 2016



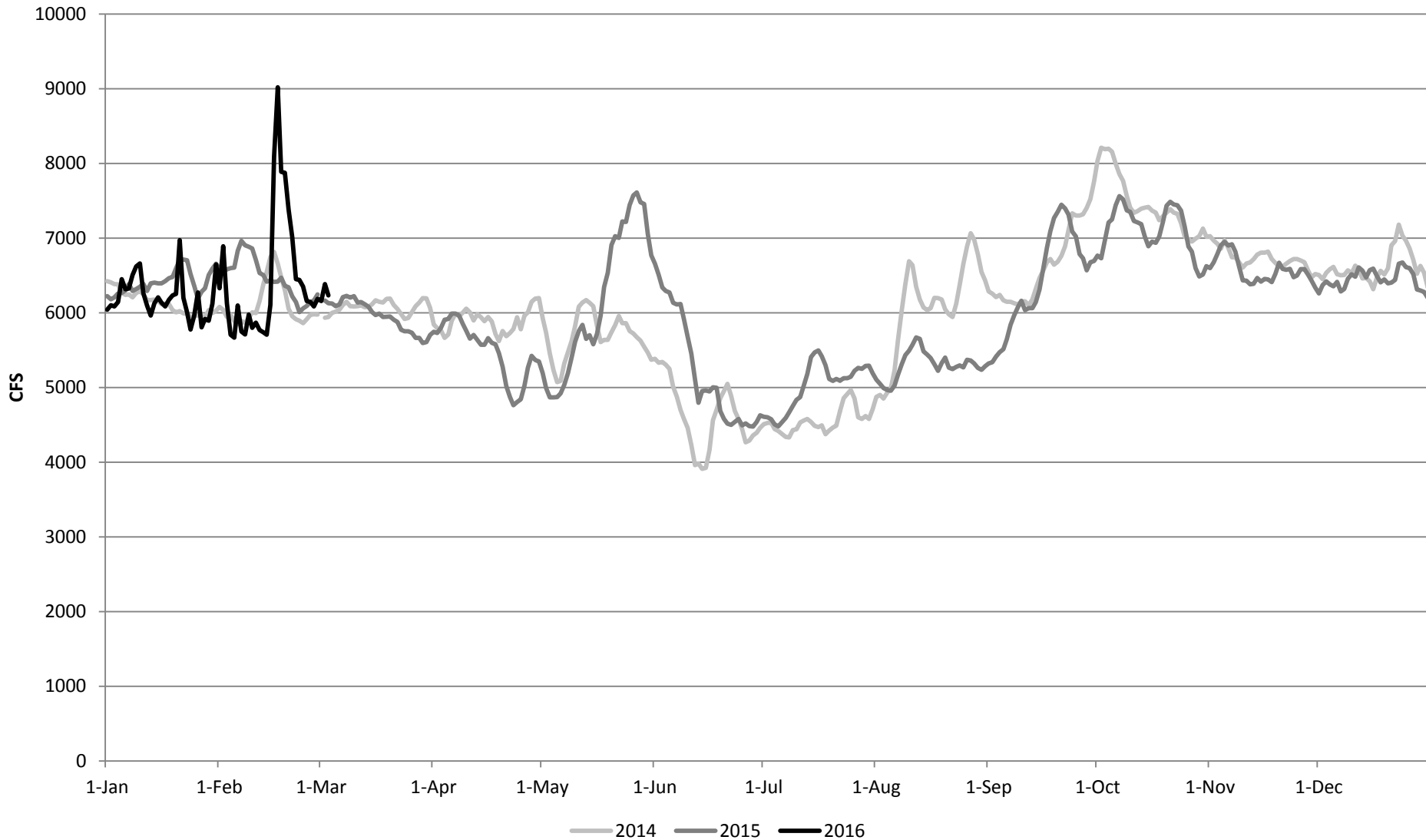
## Milner to Murphy Reach Gain with Statistics



## AADF Comparison

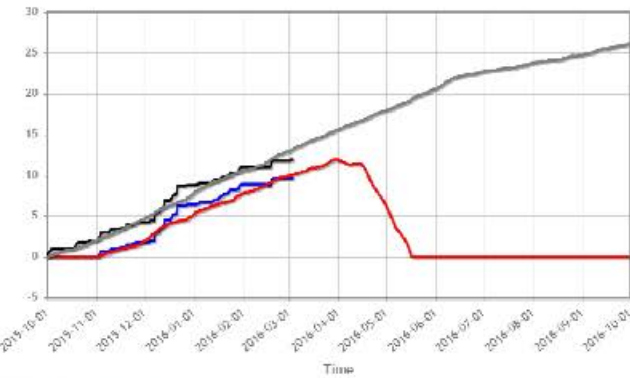


### Milner to Murphy Reach Gain Comparison

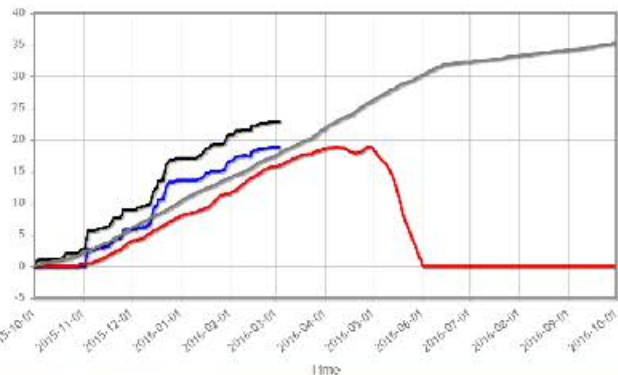




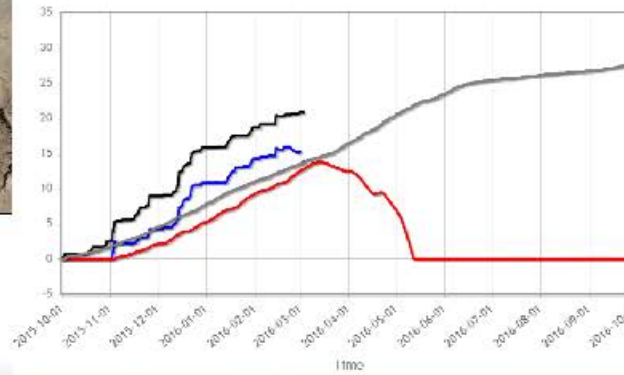
Hyndman (537) Idaho SNOTEL Site - /440 ft



Bear Creek (321) Nevada SNOTEL Site - 8040 ft



Wilson Creek (871) Idaho SNOTEL Site - /120 ft



Magic Mountain (610) Idaho SNOTEL Site - 6880 ft

