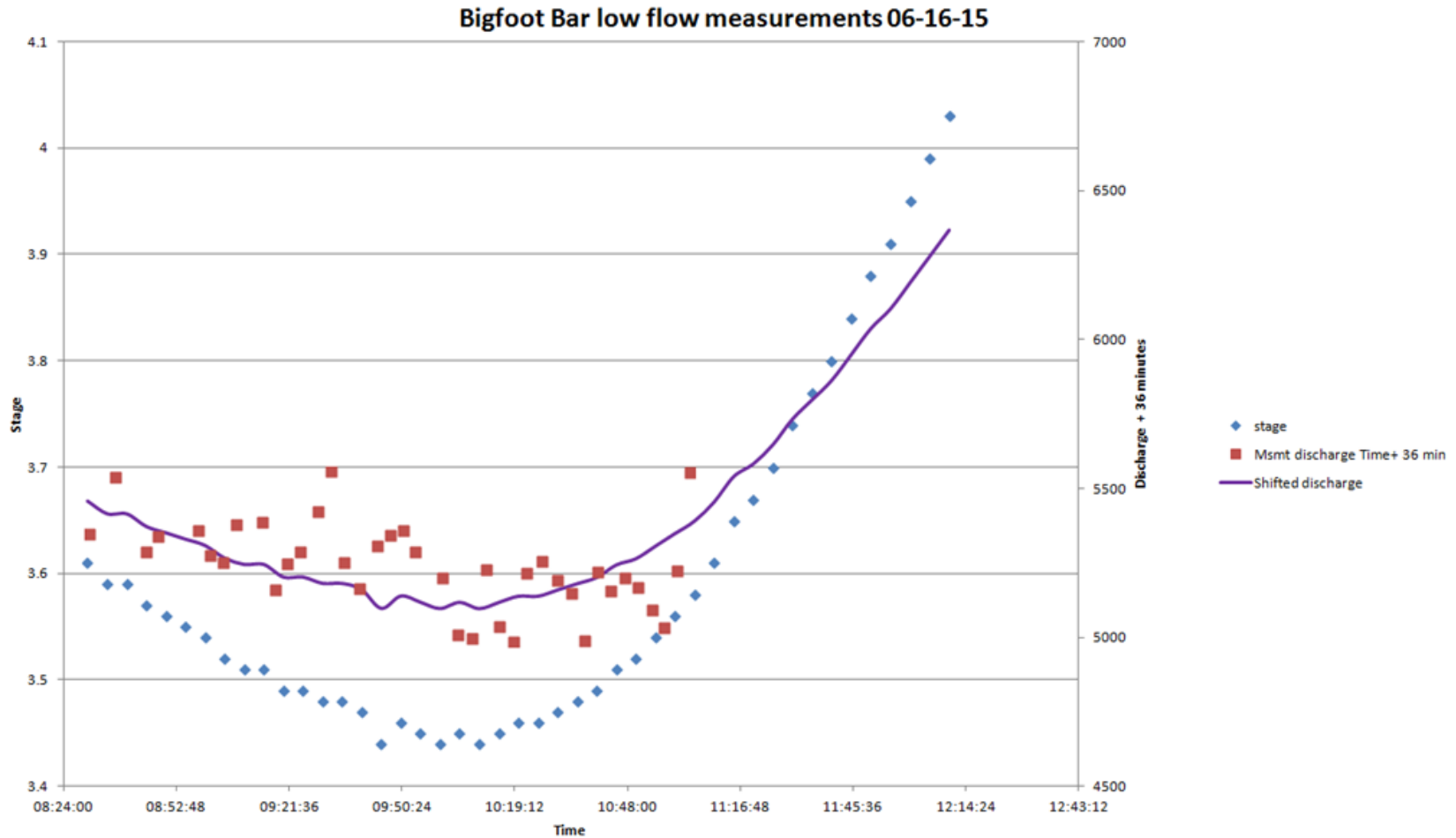


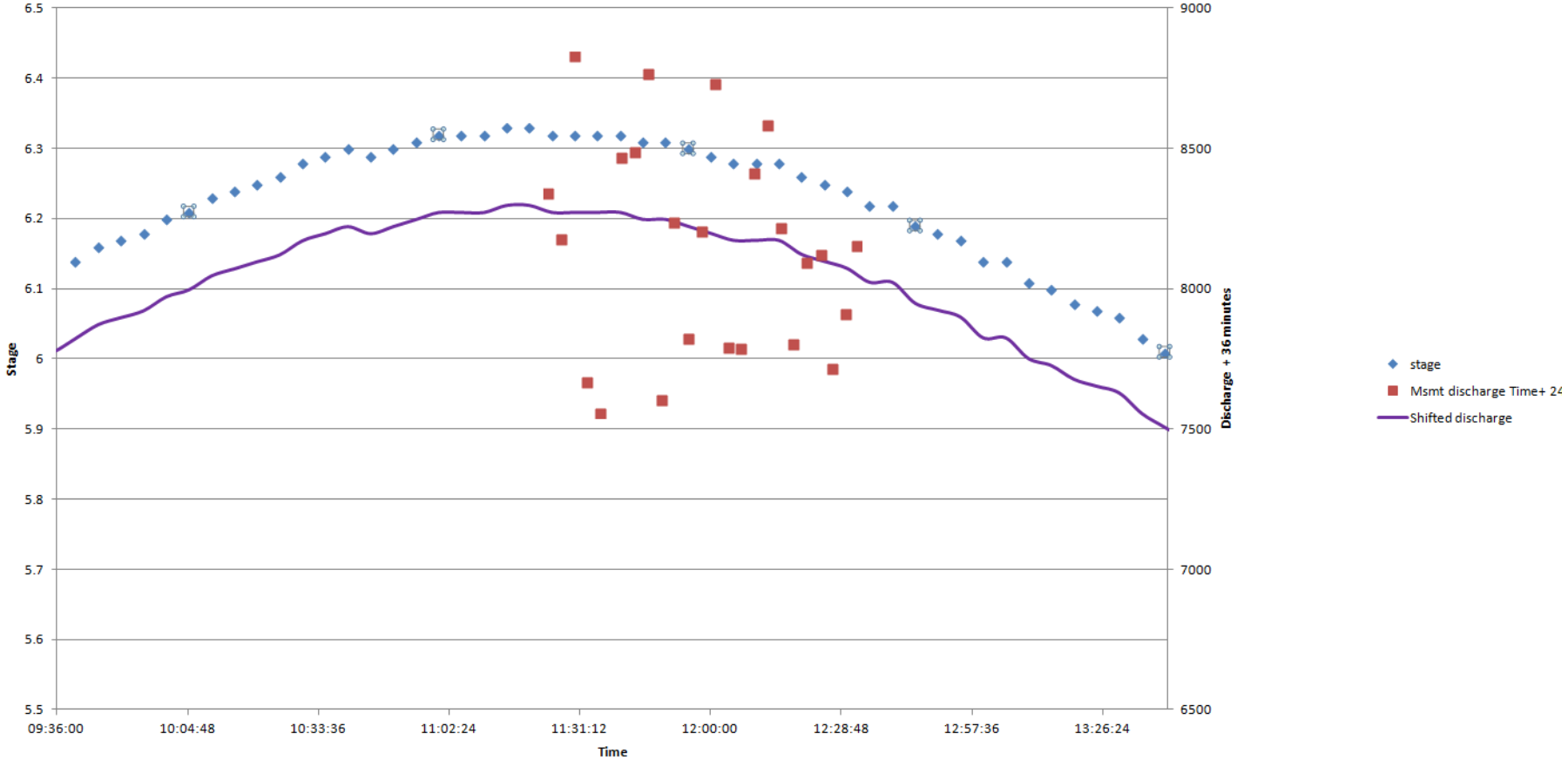
Big Foot Bar Stage Discharge



Big Foot Bar Stage Discharge



Bigfoot Bar higher flow measurements 09-17-15



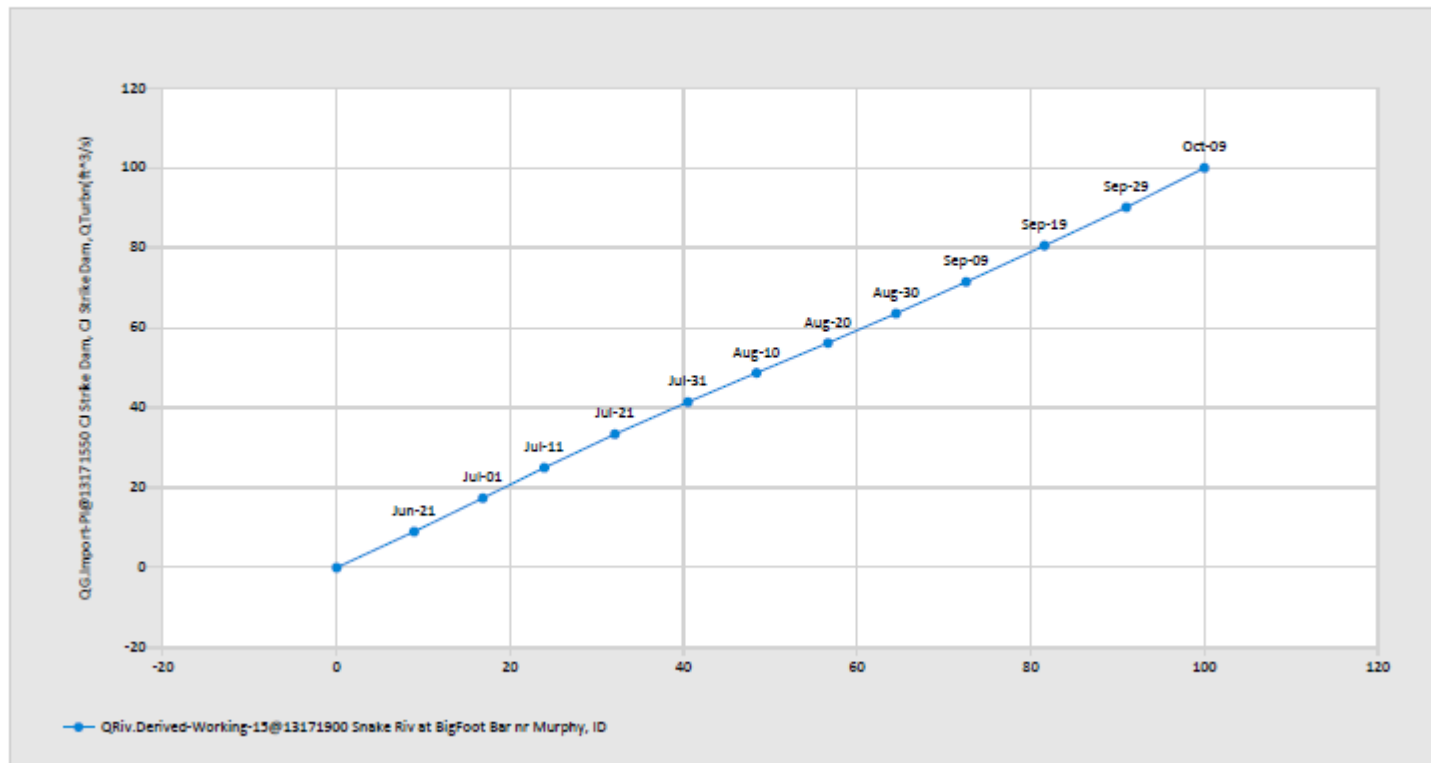
Bigfoot Bar and CJ Stike correlation in Double Mass %

Double Mass %
[Untitled Report]

Oct 19, 2015 | 1 of 1

Interval: 10.00:00:00

Period Selected: 2015-06-01 00:00:00 - 2015-10-19 12:00:00

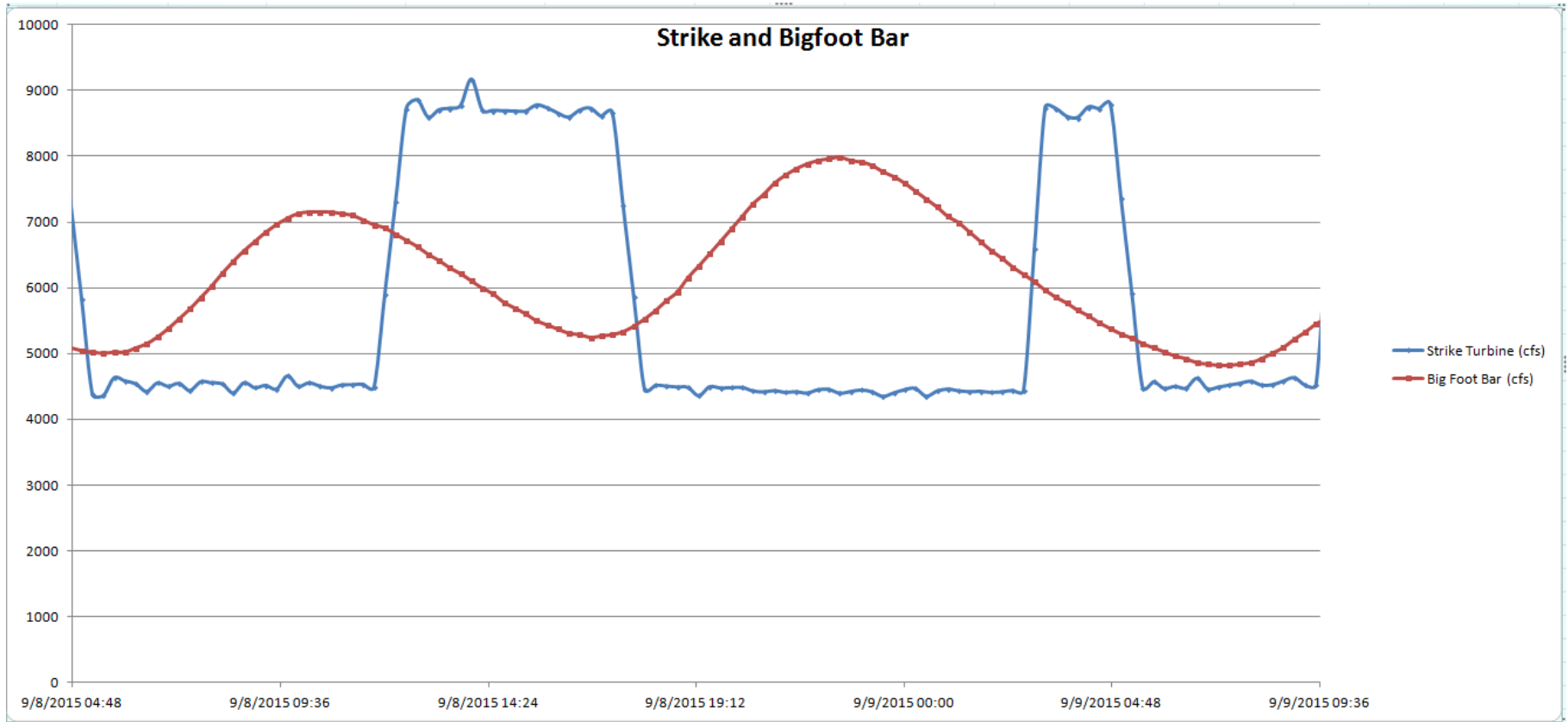


Bigfoot Bar Stage Discharge

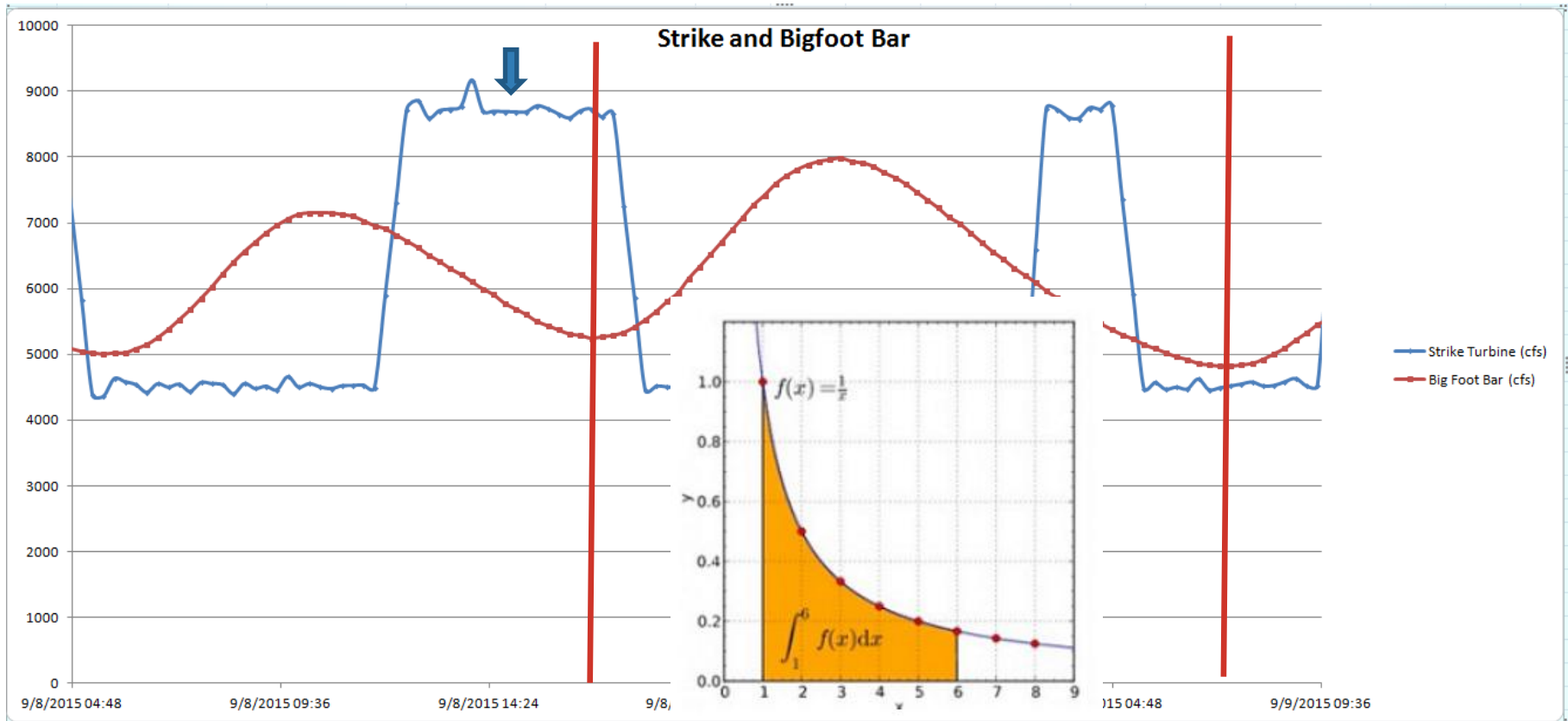
- CJ Strike and Bigfoot Bar have the same volume of water passing through them.
- Wave action seen in stage is also seen in velocity samples and discharge measurements.



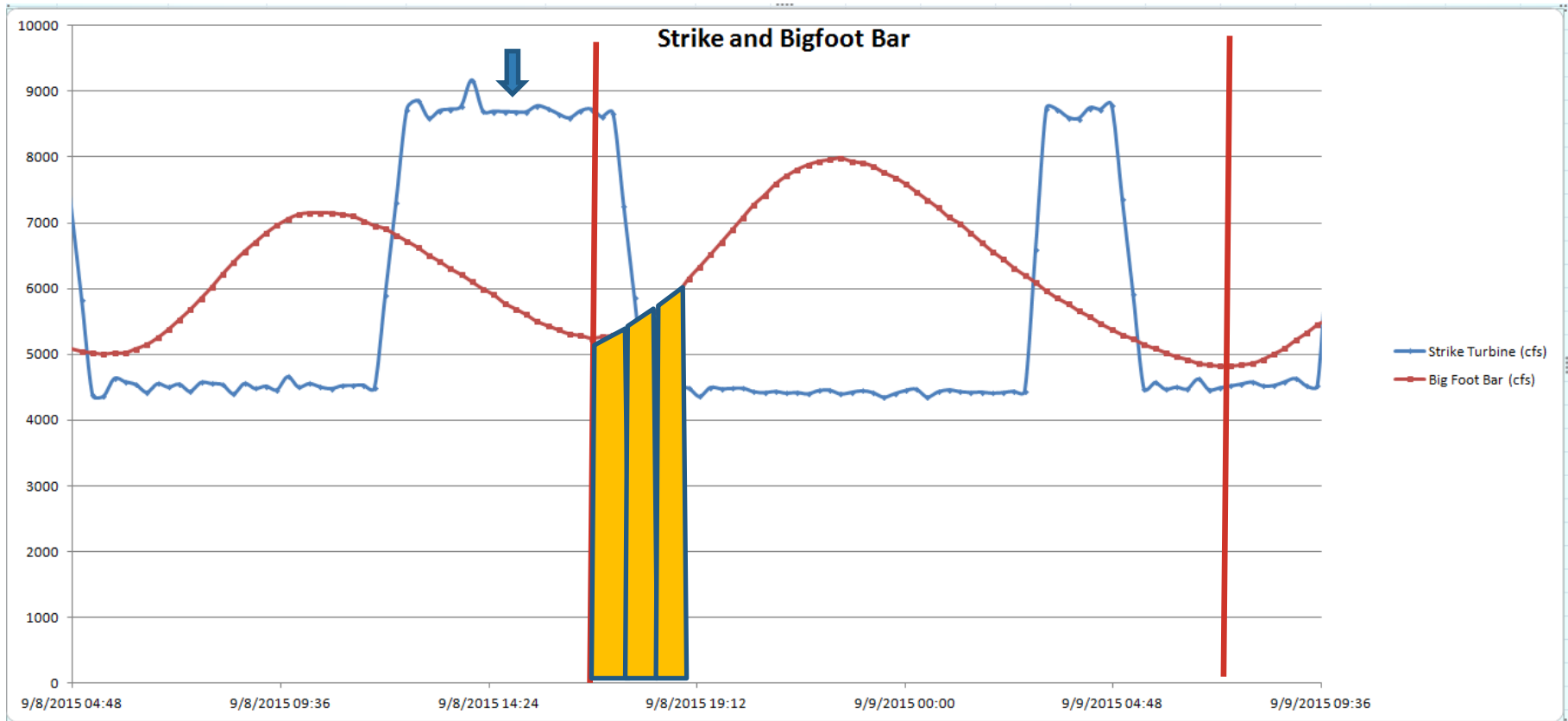
CJ Strike and Bigfoot Bar travel time center of mass



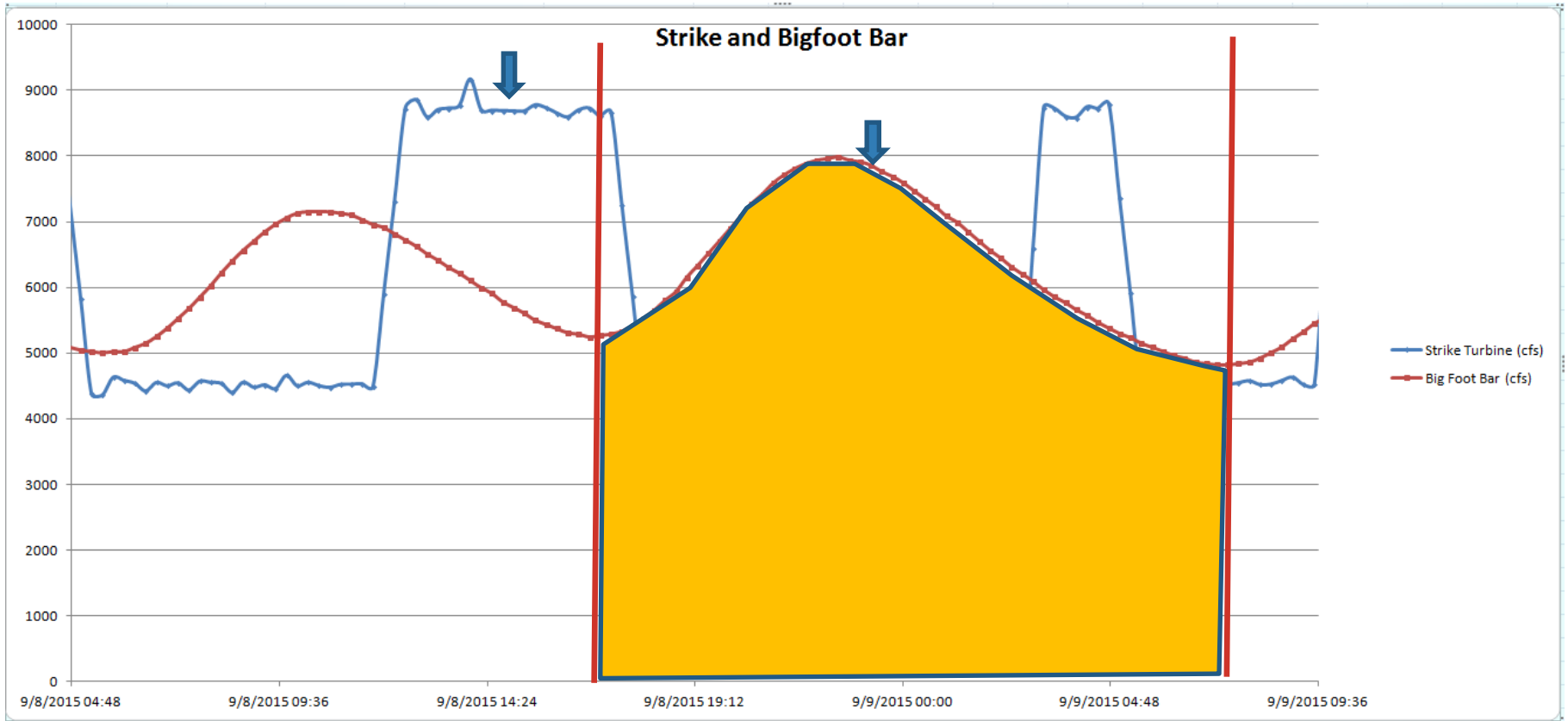
CJ Strike and Bigfoot Bar travel time center of mass: integrate area



CJ Strike and Bigfoot Bar travel time center of mass: integrated area



Center of mass off to the side



Center of mass Travel time



Travel time summary



- Center of Mass
 - 8.75 hours
- Peak to peak
 - 7.75 hours
- Rise to rise
 - 5 hours
- Aquarius regression tool, auto phase adjustment
 - 4.5 hours



- END