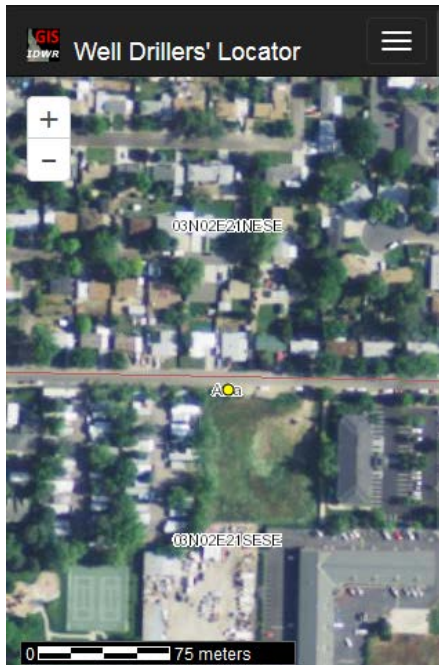


Configuring your Hand-held GPS Unit

Last updated May, 2016

Used in IDWR's Well Drillers' Locator: <http://maps.idwr.idaho.gov/map/Locator> Questions? Contact GISInfo@idwr.idaho.gov



GPS Coordinate Conversion and Mapping Tool Information and Instructions

Important note for Well Drillers: You Must Configure Your GPS Coordinate System to Record Latitude/Longitude (Lat/Long) in World Geodetic System 84 (WGS84).

Other coordinate system configurations will return inaccurate conversions and map locations. See your GPS instruction manual for information on configuring the proper coordinate system and datum.

General Information

This tool is used to convert GPS coordinates **from** latitude/longitude **to** a Public Land Survey legal description (Quarter-Quarter, Quarter, Section, Township, Range).

A yellow dot will be placed on a background map to verify your location. **For those with color vision deficiencies, the "yellow dot" will always appear in the exact center of the map.** The IDTM83 coordinates (in addition to latitude/longitude) will also be shown. This dot will remain at the position you mapped. If you zoom or pan the map then change which layer is active, your map will re-position itself to place the yellow dot in the center of the map.

If you find a location using some method other by coordinates, the yellow dot will not be present.

Instructions For Using The Conversion & Mapping Tool

Step 1. Select the proper "Coordinate Type" consistent with your GPS-unit configuration. Select decimal degrees, decimal minutes, decimal seconds or ITDM83 (ITDM83 is uncommon). You now have options of UTM or State Plane.

Step 2. Fill in the text boxes with lat/long, IDTM, UTM or State Plane coordinates. You cannot leave any boxes blank. If you select the wrong coordinate system, just make another selection from the drop-down list. Do not press your browser's "Back" button. **Decimal points are only allowed where shown in the examples below the text boxes.**

Step 3. Click the "Convert and Map" button.

Step 4. The location you entered will appear the resultant map, and the corresponding legal description and coordinate conversion of your location will be displayed in the results area, to the right of the top of the map.

Note: Make sure that the location you entered is shown in the correct location on the map. If the location is not correct you probably misread or mis-entered the GPS information.

Notes for well drillers:

Record the GPS coordinates in your permanent record. The site you map may be within one of the IDWR's areas of drilling concern. If so, the map will be overlaid with a pattern indicated at the right side of the map. Click the **Hide Drilling Restriction Areas** button then click the **Show Drilling Restriction Areas** button just to make sure that you are not in a restricted area. If the location map is an accurate representation of your actual location, record the township, range and quarter/quarter-quarter on the Well Log.