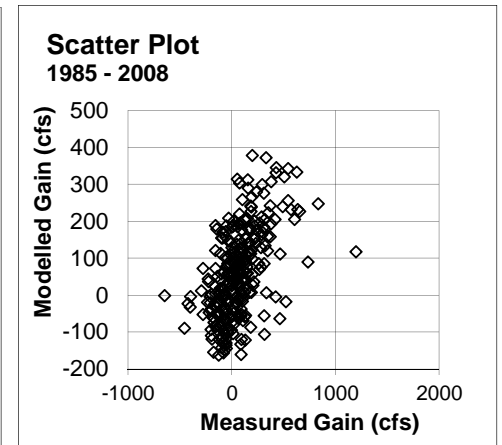
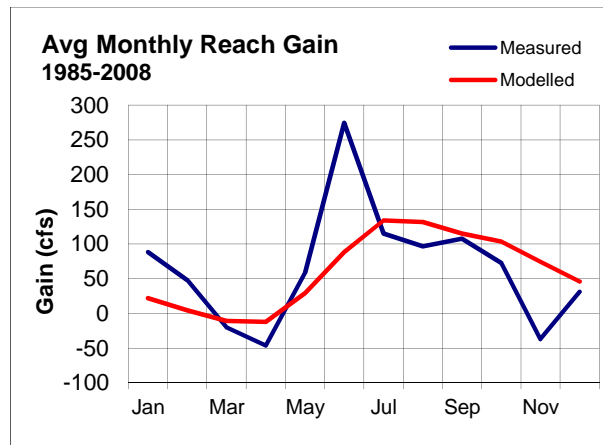
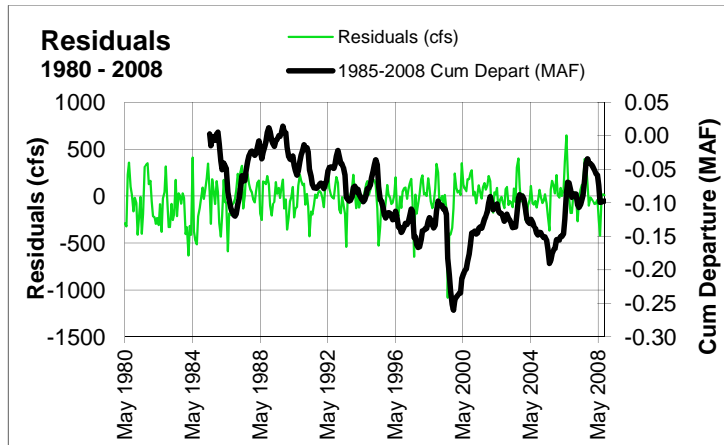
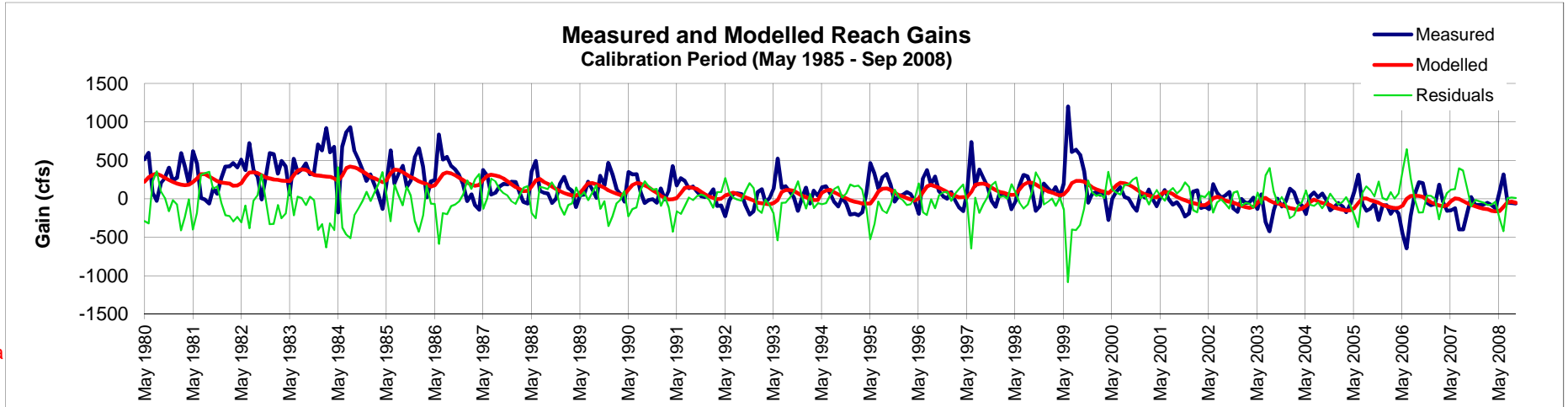


ESPAM Calibration Charts River Reach Gains

Reach Gains **Ashton to Rexburg**

ESPAM 2.0 Run **E120116A006**



Mean Error (cfs)

-5.74
-8.6%

Mean Absolute Error (cfs)

130.11
194.5%

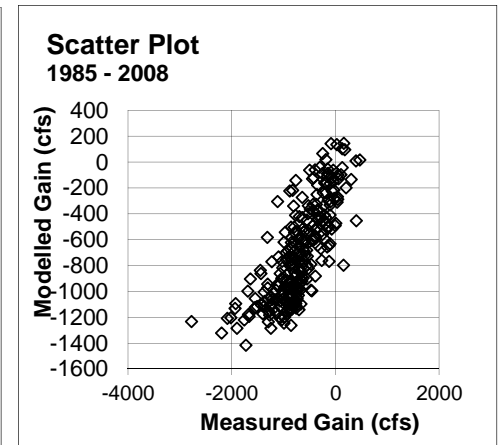
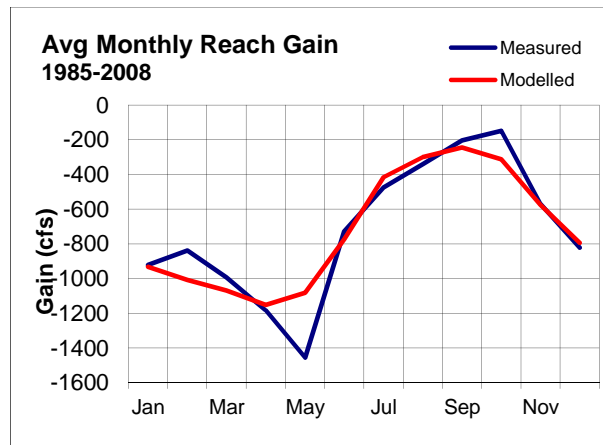
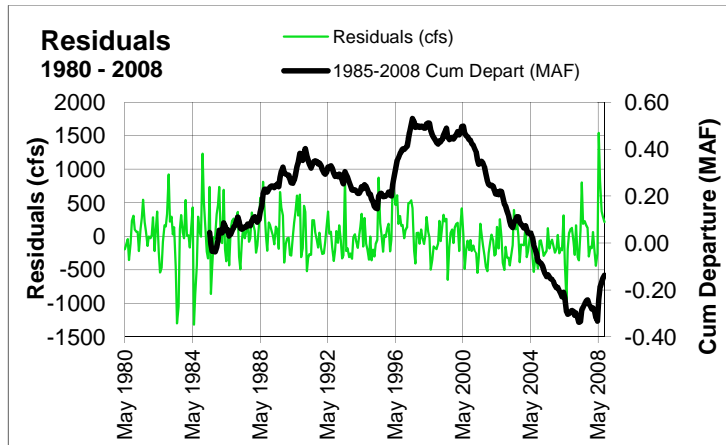
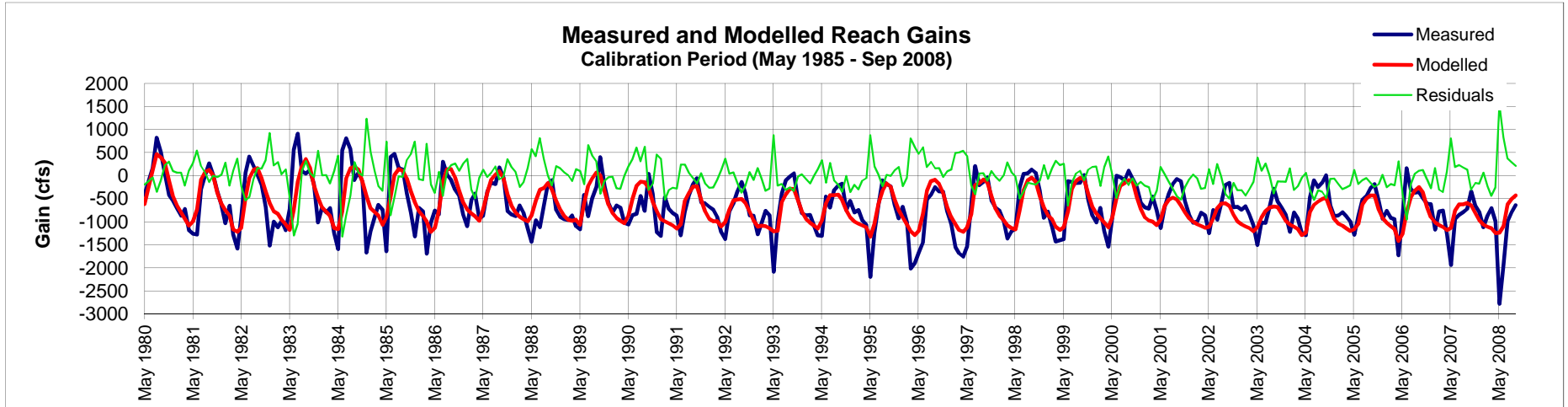
R-Squared

0.289

ESPAM Calibration Charts River Reach Gains

Reach Gains **Heise to Shelly**

ESPAM 2.0 Run **E120116A006**



Mean Error (cfs)

-8.10
1.1%

Mean Absolute Error (cfs)

243.61
34.3%

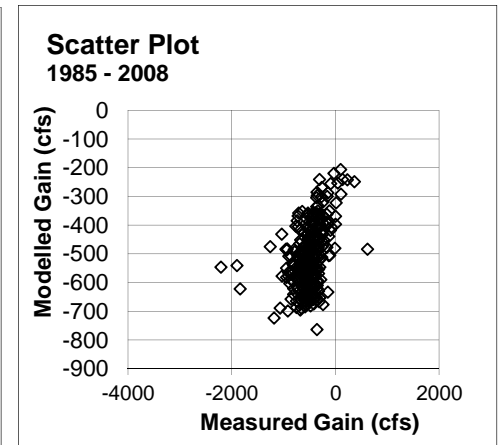
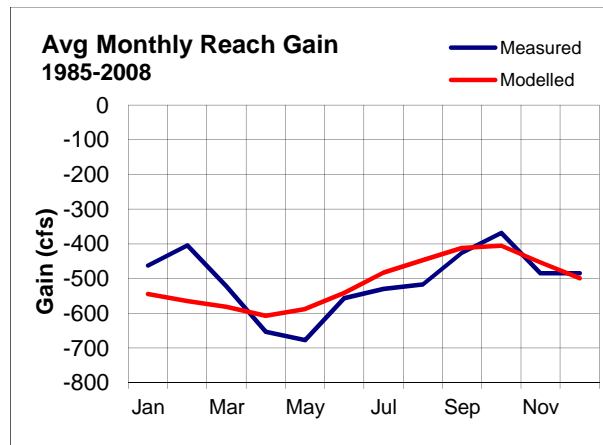
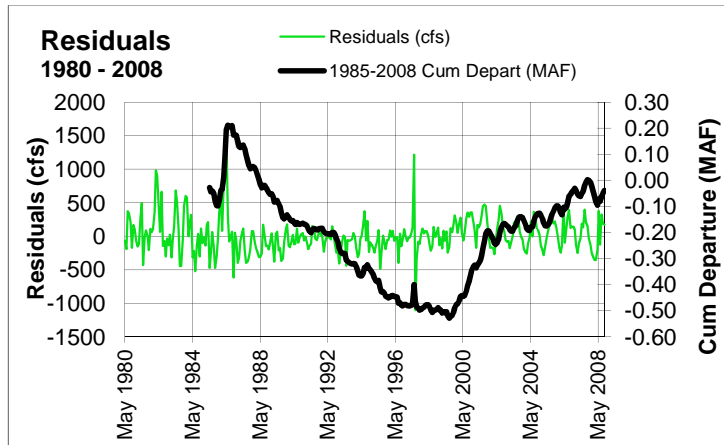
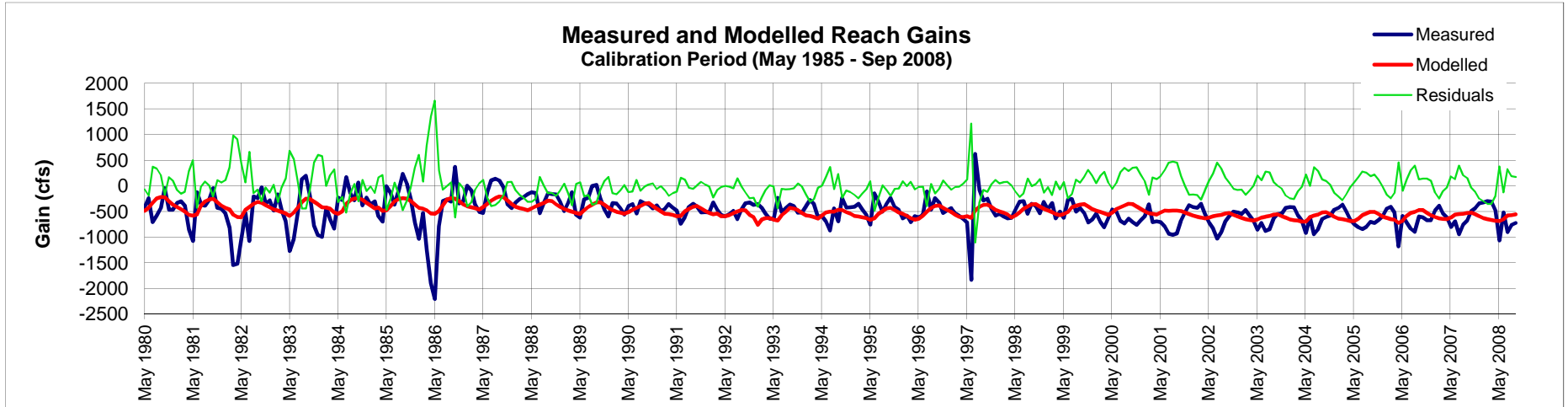
R-Squared

0.590

ESPAM Calibration Charts River Reach Gains

Reach Gains **Shelley to Near Blackfoot**

ESPAM 2.0 Run **E120116A006**



Mean Error (cfs)

-2.32
0.5%

Mean Absolute Error (cfs)

178.01
35.0%

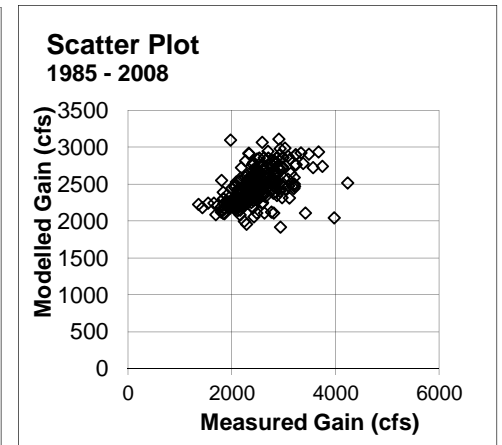
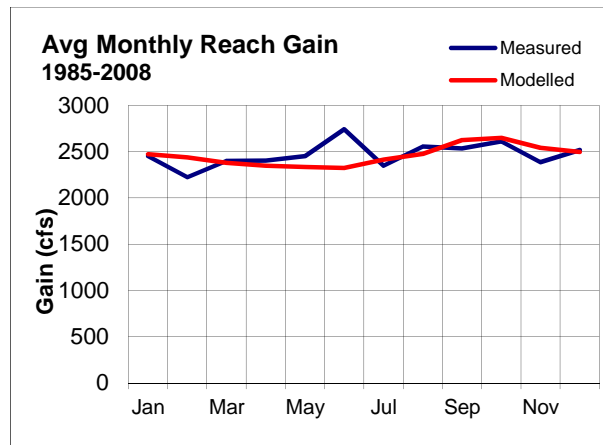
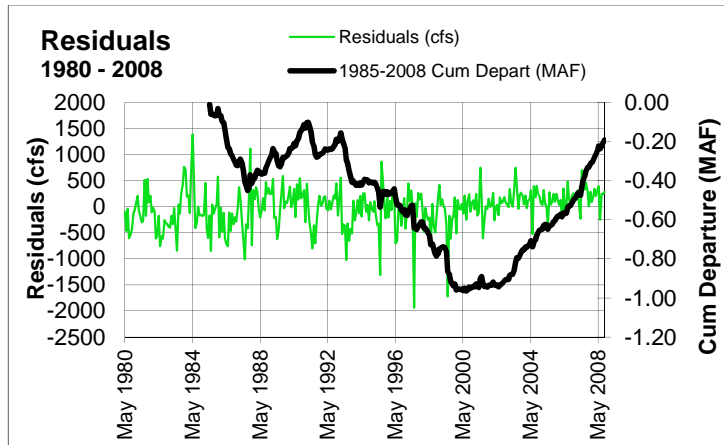
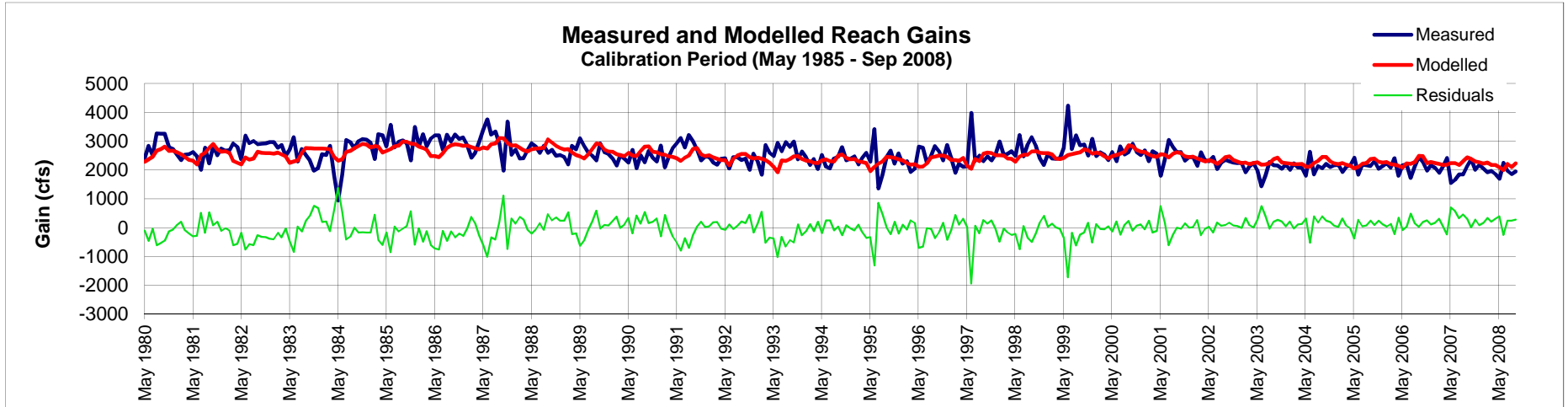
R-Squared

0.183

ESPAM Calibration Charts River Reach Gains

Reach Gains **Near Blackfoot to Neeley**

ESPAM 2.0 Run **E120116A006**



Mean Error (cfs) **-11.33**
-0.5%

Mean Absolute Error (cfs)

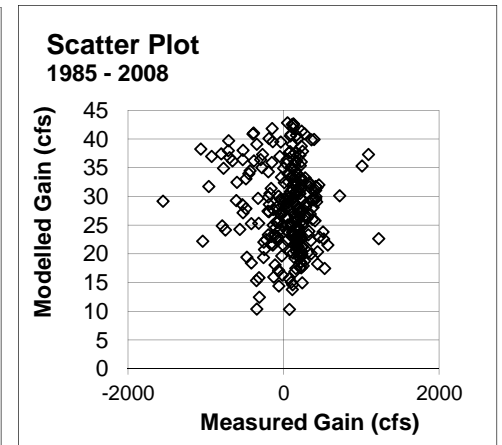
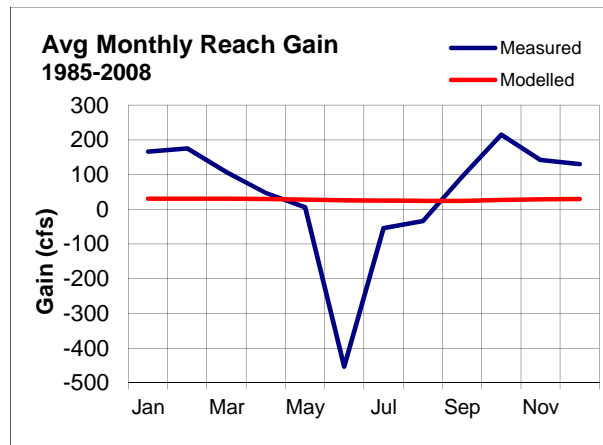
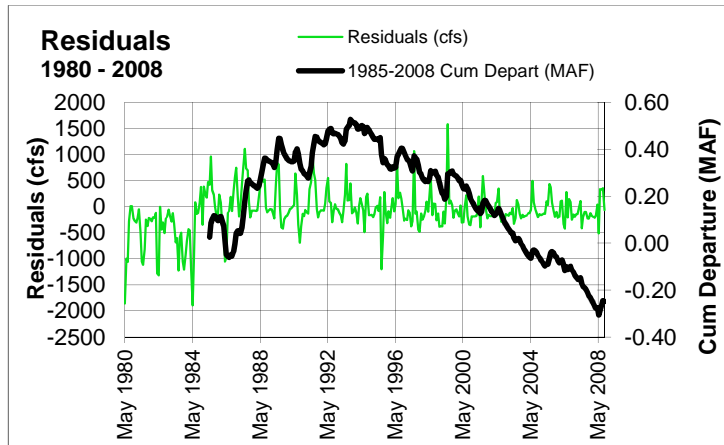
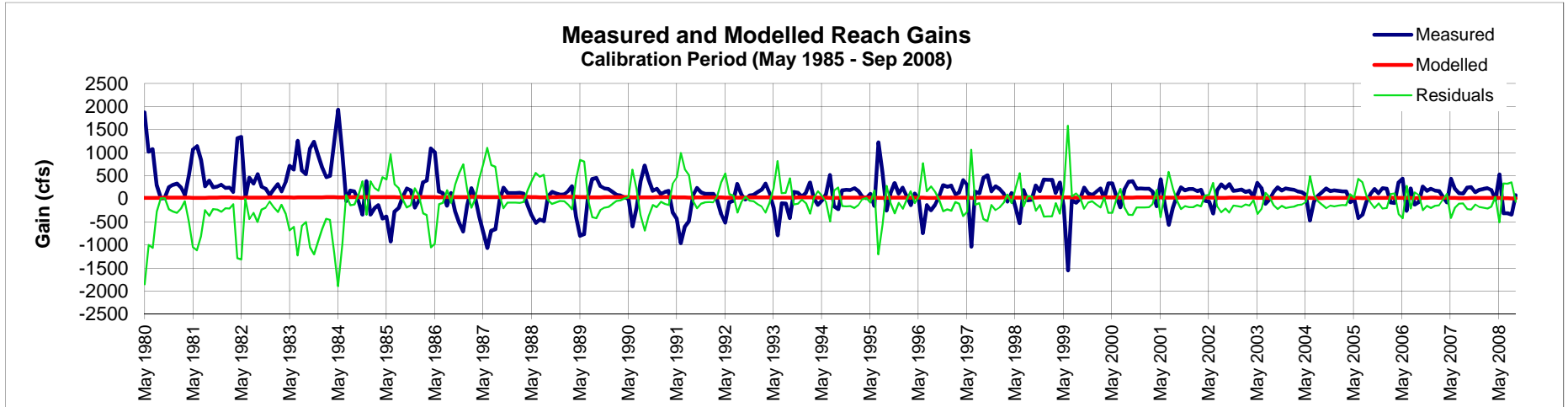
262.60
10.6%

R-Squared **0.261**

ESPAM Calibration Charts River Reach Gains

Reach Gains **Neeley to Minidoka**

ESPAM 2.0 Run **E120116A006**



Mean Error (cfs)

-14.70
-34.4%

Mean Absolute Error (cfs)

236.40
553.2%

R-Squared

0.011