



2010 POD File

Allan Wylie

IDWR



2010 POD File

- ◆ What is POD file
- ◆ Why new POD file
- ◆ Changes in new POD file
- ◆ Effect of new POD file



What is POD file

- ◆ Point of diversion (POD) file
 - GIS file of ground water irrigation wells containing priority date and maximum irrigation rate
 - Used in curtailment scenarios to determine number of curtailed acres in each model cell



Why new POD file

- ◆ Water rights data base is a living document
 - Transfers happen
 - Adjudication happens
 - Update POD file each winter



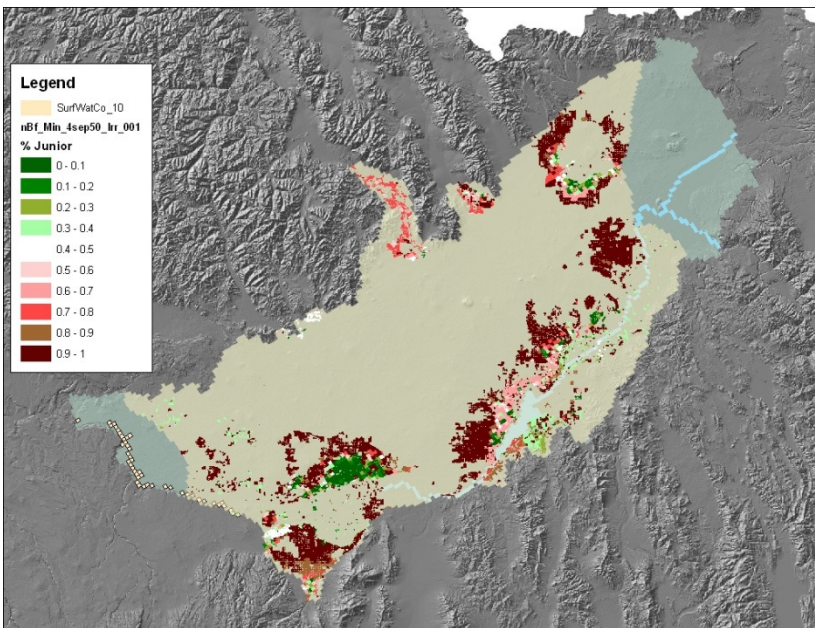
Changes in new POD file



- ◆ 2006 POD file – 18567 irr points of diversion
 - ◆ 2007 POD file – 18524 irr points of diversion
 - ◆ 2008 POD file – 18936 irr points of diversion
 - ◆ 2009 POD file – 18909 irr points of diversion
 - ◆ 2010 POD file – 20095 irr points of diversion
-
- ◆ 2006 POD file – 544 enlargements
 - ◆ 2007 POD file – 623 enlargements
 - ◆ 2008 POD file – 743 enlargements
 - ◆ 2009 POD file – 790 enlargements
 - ◆ 2010 POD file – 1934 enlargements

Test-1

p-date=4Sep50

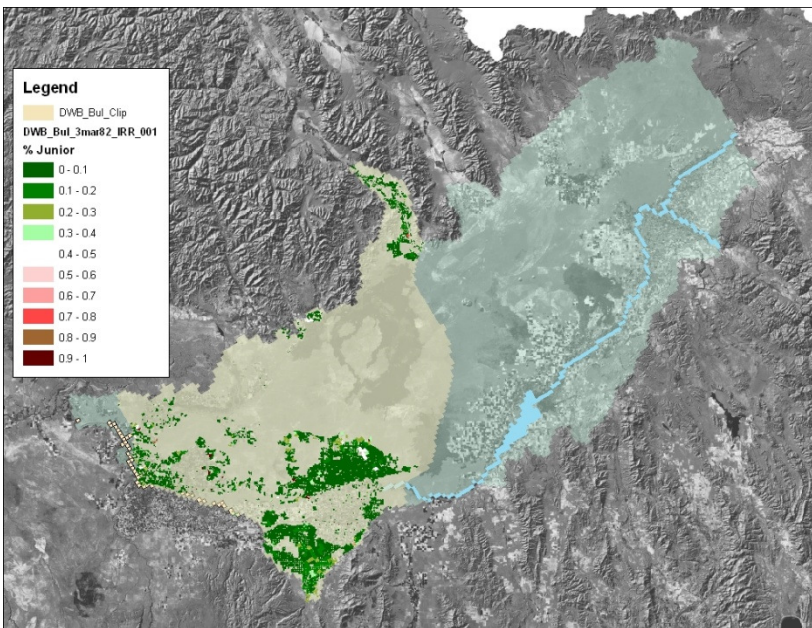


reach	cf/d gain	cfs gain	ac-ft/y	
MLD-BAN	143949.4	1.7	1,207	
MLD	3778894	43.7	31,686	
KSP-MLD	450796.8	5.2	3,780	
KSP	4172813	48.3	34,989	
BUL-KSP	6660702	77.1	55,850	
DWB-BUL	1.85E+07	214.1	155,116	
A-R	1.53E+07	176.9	128,180	
H-S	9901494	114.6	83,024	
S-B	2.97E+07	343.5	248,869	
N-M	1.14E+07	132.4	95,925	732,848
B-N	7.60E+07	879.2	636,923	
sum	175,975,625	2,037	1,475,547	

-0.23% Difference in irrigated area
 -0.24% Difference in total depletions
 -0.18% Difference in gains to target reach

Test-2

p-date=3Mar82

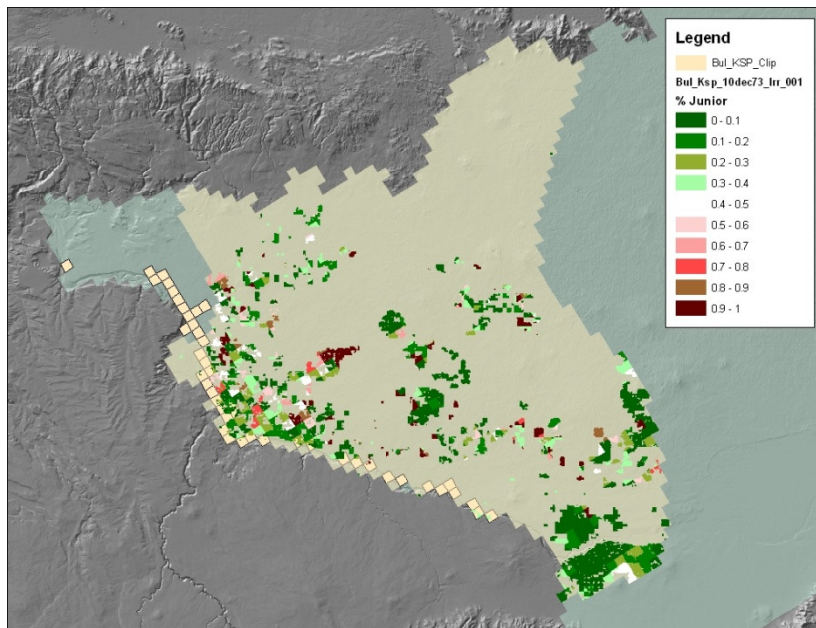


reach	cf/d gain	cfs gain	ac-ft/y
MLD-BAN	21410.81	0.2	180
MLD	542530.2	6.3	4,549
KSP-MLD	61257.4	0.7	514
KSP	526800.4	6.1	4,417
BUL-KSP	788774.9	9.1	6,614
DWB-BUL	1748460	20.2	14,661
A-R	74611.57	0.9	626
H-S	84513.7	1.0	709
S-B	612135	7.1	5,133
N-M	731030.9	8.5	6,130
B-N	2090499	24.2	17,529
sum	7,282,024	84	61,059

-0.59% Difference in irrigated area
 -0.64% Difference in total depletions
 -0.33% Difference in gains to target reach

Test-3

p-date=10Dec73



reach	cf/d gain	cfs gain	ac-ft/y
MLD-BAN	40084	0.5	336
MLD	1047715	12.1	8,785
KSP-MLD	156778.6	1.8	1,315
KSP	1275293	14.8	10,693
BUL-KSP	1816306	21.0	15,230
DWB-BUL	2857280	33.1	23,958
A-R	38600.28	0.4	324
H-S	44255.87	0.5	371
S-B	329802.9	3.8	2,765
N-M	324655.7	3.8	2,722
B-N	1149457	13.3	9,638
sum	9,080,228	105	76,137

0.61% Difference in irrigated area

0.62% Difference in total depletions

1.00% Difference in gains to target reach