



# 2009 POD File

Allan Wylie  
IDWR



---

# 2009 POD File

---

- ◆ What is POD file
- ◆ Why new POD file
- ◆ Changes in new POD file
- ◆ Effect of new POD file



# What is POD file

- ◆ Point of diversion (POD) file
  - GIS file of ground water irrigation wells containing priority date and maximum irrigation rate
  - Used in curtailment scenarios to determine number of curtailed acres in each model cell



# Why new POD file



- ◆ Water rights data base is a living document
  - Transfers happen
  - Adjudication happens
  - Update POD file each winter



# Changes in new POD file



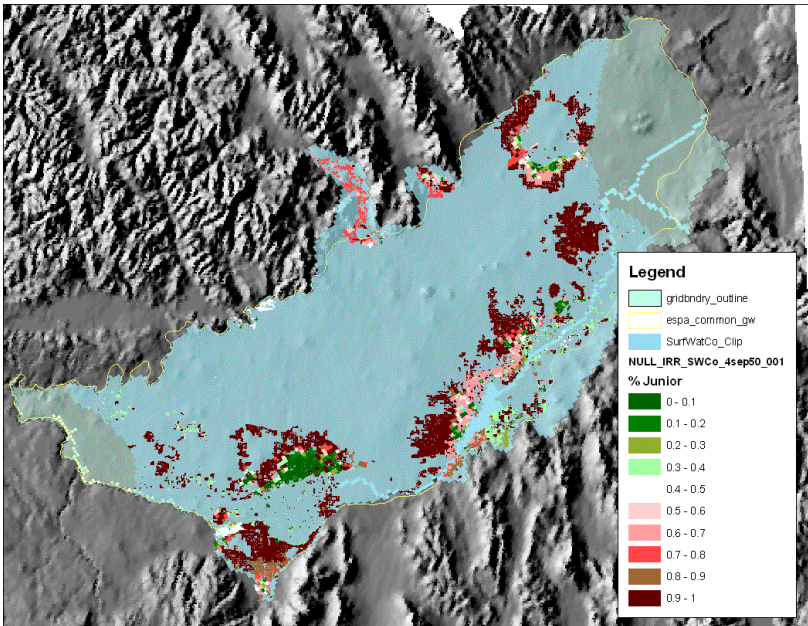
- ◆ 2006 POD file – 18567 irrigation wells
  - ◆ 2007 POD file – 18524 irrigation wells
  - ◆ 2008 POD file – 18936 irrigation wells
  - ◆ 2009 POD file – 18909 irrigation wells
- 
- ◆ 2006 POD file – 544 enlargements
  - ◆ 2007 POD file – 623 enlargements
  - ◆ 2008 POD file – 743 enlargements
  - ◆ 2009 POD file – 790 enlargements



Why changes?

# Test-1

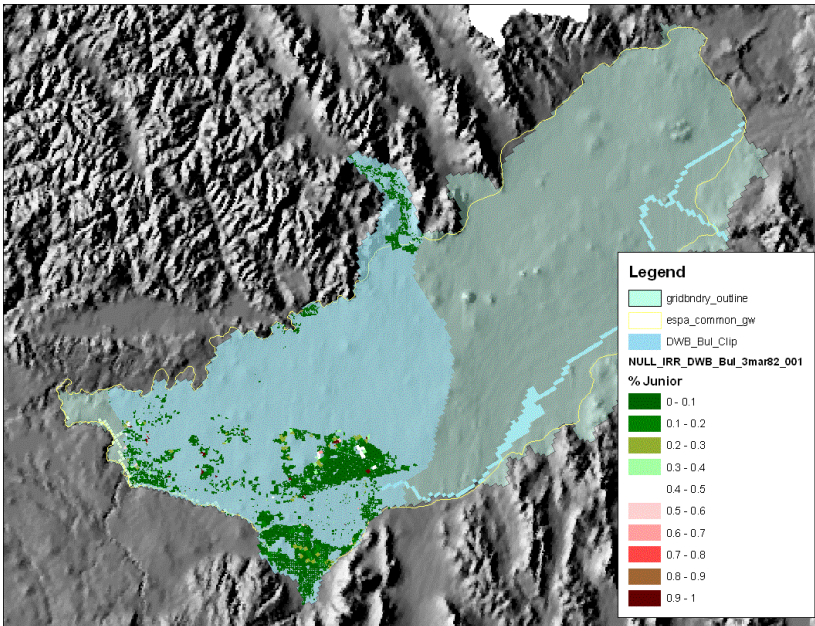
## p-date=4Sep50



irr_area		Depletions		ft/ac/yr
2,917,237,368	m <sup>2</sup>	176,739,680	ft <sup>3</sup> /d	2.055808
720,862	ac	1,481,954	ac-ft/y	
2.47%		1.77%		
reach	cf/d gain	cfs gain	ac-ft/y	
A-R	1.53E+07	177.7	128,708	
H-S	9942677	115.1	83,369	
S-B	2.98E+07	344.9	249,863	
B-N	7.63E+07	882.6	639,442	735,859
N-M	1.15E+07	133.1	96,417	
DWB-BUL	1.86E+07	215.3	155,942	
BUL-KSP	6697064	77.5	56,155	
KSP	4195700	48.6	35,181	
KSP-MLD	453286.2	5.2	3,801	
MLD	3799985	44.0	31,863	
MLD-BAN	144753.7	1.7	1,214	
sum	176,739,684	2,046	1,481,954	
	2.53%	difference irrigated area		
	1.81%	difference total depletions		
	2.25%	difference nr Blackfoot - Neeley		

# Test-2

## p-date=3Mar82

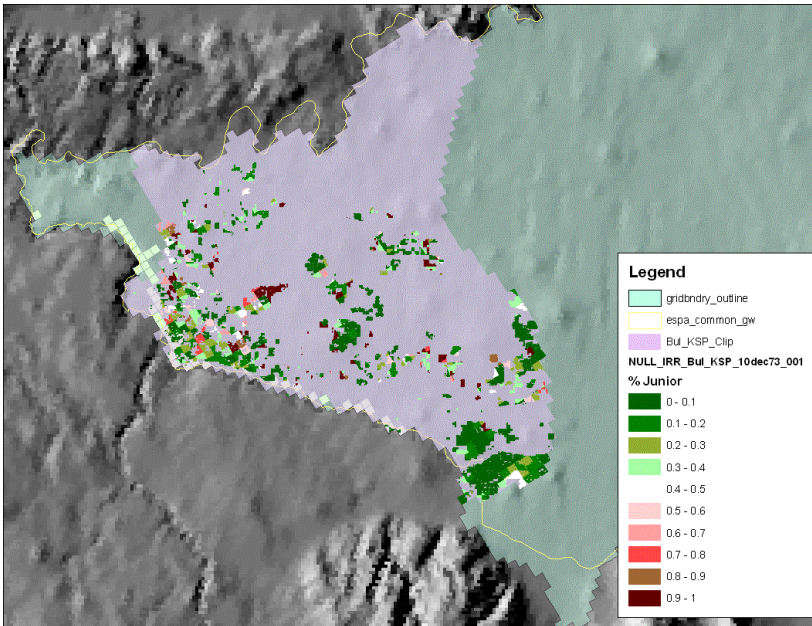


irr_area		Depletion		ft/ac/yr
122532471	m^2	8,027,867	ft^3/d	2.223152
30,278	ac	67,313	ac-ft/y	
1.12%		0.90%		
reach	cf/d gain	cfs gain	ac-ft/y	
A-R	83180.9	1.0	697	
H-S	94302.77	1.1	791	
S-B	684479.6	7.9	5,739	
B-N	2341587	27.1	19,634	
N-M	815238.9	9.4	6,836	
DWB-BUL	1898038	22.0	15,915	
BUL-KSP	854659.9	9.9	7,166	
KSP	576135	6.7	4,831	
KSP-MLD	71166.2	0.8	597	
MLD	586144.1	6.8	4,915	
MLD-BAN	22934.74	0.3	192	
sum	8,027,867	93	67,313	
1.14%	difference irrigated area			
0.91%	difference total depletions			
-0.40%	difference Devils Wasbowl - Buhl			



# Test-3

## p-date=10Dec73



irr_area		Depletion		ft/ac/yr
130074728	m^2	9,160,760	ft^3/d	2.389784
32,142	ac	76,813	ac-ft/y	
-1.96%		-1.70%		
reach	cf/d gain	cfs gain	ac-ft/y	
A-R	38813.17	0.4	325	
H-S	44499.88	0.5	373	
S-B	331619.6	3.8	2,781	
B-N	1155767	13.4	9,691	
N-M	325928.7	3.8	2,733	
DWB-BUL	2861474	33.1	23,993	
BUL-KSP	1836104	21.3	15,396	
KSP	1291604	14.9	10,830	
KSP-MLD	162562.6	1.9	1,363	
MLD	1071463	12.4	8,984	
MLD-BAN	40924.09	0.5	343	
sum	9,160,760	106	76,813	
	-1.92%	difference irrigated area		
	-1.67%	difference total depletions		
	-0.33%	difference Buhl - Thousand Spgs		