

# Results of Homework Problem

ESHMC

31 March / 1 April 2009

B. Contor

- rites
- dd... Organize...
- \_WR\_AJ\_SEARCH
- oogle
- shorelineMeasurementPoint...
- FamilySearch Indexing Pres...
- My Documents
- inks
- edia
- IBPS All Classical 89.9 Portl...
- SCDB\_qq
- DWR
- DWR\_ftp
- NSIDE Idaho
- 'ahoo! Maps, Driving Directi...
- .5' 6 Dory - rowing dory-Bo...
- Camping trailer plans
- Chesapeake\_Sailboat\_Kits
- Driftboat Kits
- Pygmy Boats Inc
- JIF
- www.rvsiding.com
- Wikipedia
- Current Students Idaho Sta...
- mail
- WMIS Login
- JSGS\_Seamless

# idaho.gov -

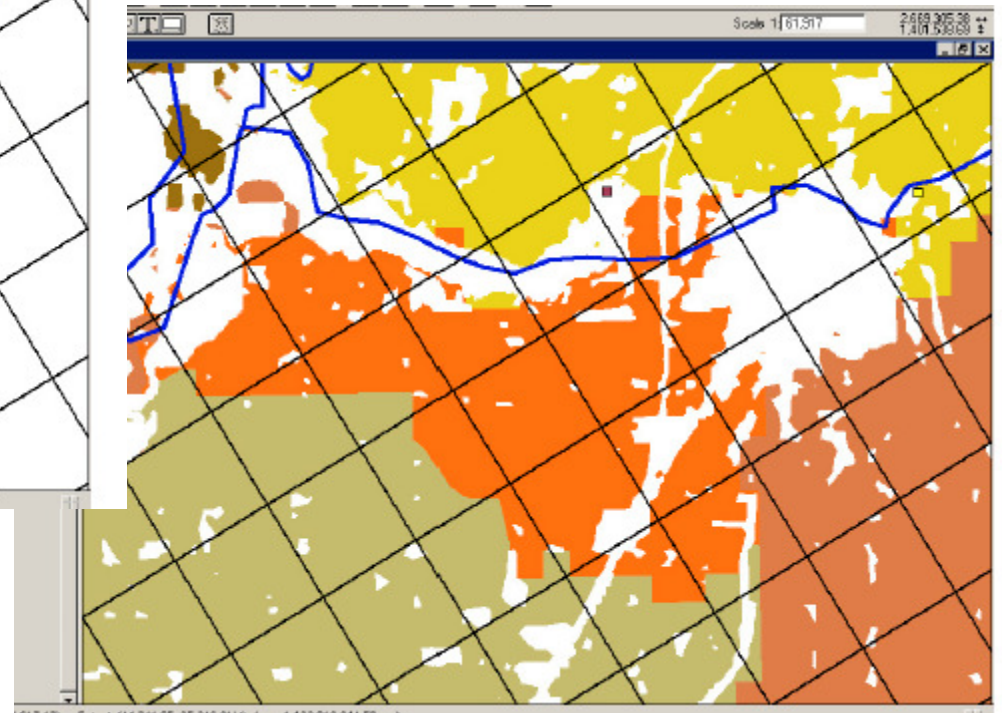
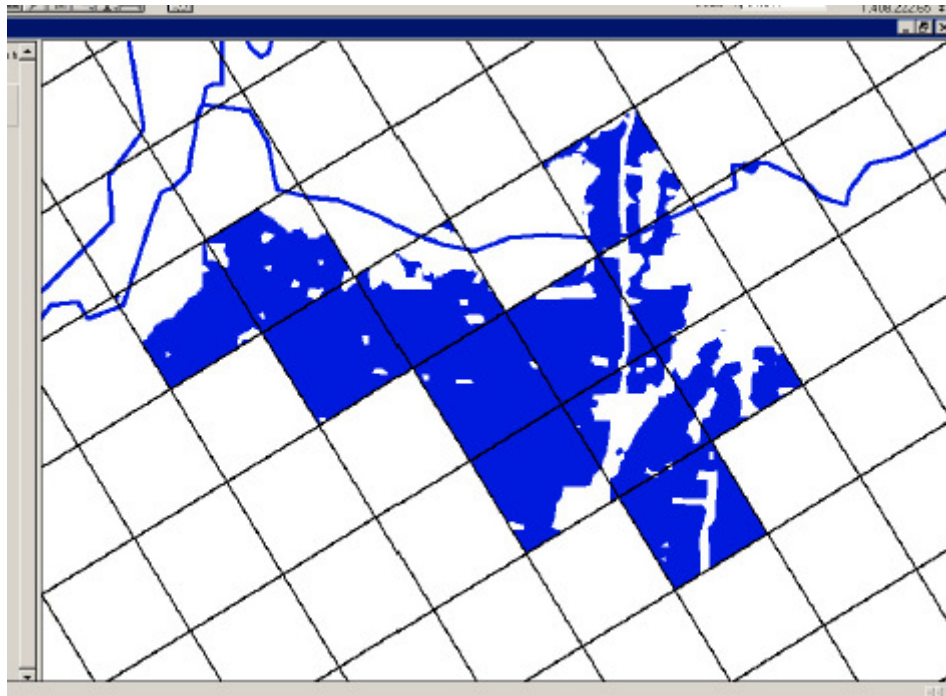
## projects/espam/meetings/2009\_ESHMC/3-31&4-1-2009/

<a href="#">v1</a>					
11, 2009	9:19 AM	109283		<a href="#">ESPAM2_Spr_pcmt_1_30_09.csv</a>	
11, 2009	9:33 AM	279040		<a href="#">ESPAM2_Spr_pcmt_1_30_09.xls</a>	
11, 2009	9:21 AM	152787		<a href="#">ESPAM2_Spr_pcmt_1_30_09_3wkshts.xlsx</a>	
29, 2009	9:38 AM	82432		<a href="#">ESPAM2_StressPeriod_Definition_20090129.xls</a>	
27, 2009	3:27 PM	2001524		<a href="#">ForDistribution_Efficiency_And_Deficit_Irriga</a>	
27, 2009	3:27 PM	141881		<a href="#">ForDistribution_Perc_or&gt;Returns_as_Residual_CC</a>	
28, 2009	1:24 PM	<dir>		<a href="#">Homework_Problem_February2009</a>	
27, 2009	3:50 PM	45056		<a href="#">MeetingAgenda_march31&amp;april1_2009final.doc</a>	
25, 2009	2:48 PM	<dir>		<a href="#">Model_Boundary</a>	
27, 2009	3:09 PM	20473022		<a href="#">Model_Run.pdf</a>	
05, 2009	10:28 AM	252928		<a href="#">MultiSprings_Drain.xls</a>	
25, 2009	2:19 PM	<dir>		<a href="#">OnFarm_Water_Recharge</a>	
26, 2009	4:26 PM	<dir>		<a href="#">POD_2009</a>	
25, 2009	2:25 PM	<dir>		<a href="#">Representation_of_Springs</a>	
11, 2009	9:19 AM	2584		<a href="#">Sprinkler_Readme_20090210.txt</a>	
28, 2009	11:32 AM	<dir>		<a href="#">Trim_Line_Discussions</a>	



```
PM      141881 ForDistribution\_Perc\_or>Returns\_e  
PM      <dir> Homework\_Problem\_February2009  
PM      45056 MeetingAgenda\_march31&april1\_2009
```

# 1. Original Question



A

or

B?

- Advantage of A
  - Easy calculation of efficiency on all cells in an entity
  - No change in total irrigated acreage or water budget

- Advantages of B
  - A few percentage-points more accurate allocation of acreage by entity
  - Nominally more correct physical location of entities

## 2. Responses from ESHMC

- Modify entity boundaries Zero
- Don't modify 3
- Don't modify boundaries,  
but modify recharge tool 1

### 3. "Aha" moment

- The existing input, output and intermediate files already contain all the needed data
- People will probably build their own tools or use existing files, anyway
- Other efforts are probably more important than redundant work on a summary tool

## 4. Decision

- Base entity boundaries on actual service areas
- Don't devote resources to a new summary tool



## 5. Reality Check

- It will be very difficult to assess in-field application efficiency on any entity w/ significant mixed-source lands (see backup slides to efficiency & percolation presentation).

End