

---

# Water-Budget Data Gathering

Presentation to ESHMC

11 September 2007

B. Contor

# Outline

- Data components for current conceptual model
- Additional needs
- Request for input from ESHMC

# Current Data Components

<b>Component</b>	<b>Data source</b>	<b>Native time step</b>
Diversions – Snake River	IDWR electronic files	1 month
Diversions – Wood Rivers	IDWR electronic files	1 month (Carey canal, long-term estimate only)
Diversions – Big Lost	Gage data	Daily
		3

# Current Data Components

<b>Component</b>	<b>Data source</b>	<b>Native time step</b>
Diversions – Blackfoot River	BIA/Water-master	Annual*
Diversions – Other	IDWR annual water-master reports	Annual*
Canal loss – Aberdeen-Springfield	Canal Company	Daily
		4

# Current Data Components

<b>Component</b>	<b>Data source</b>	<b>Native time step</b>
Canal loss – other	Estimate	Long-term average
Return flows – Wood Rivers	IDWR electronic data files	Monthly
Return flows – other entities	Estimated based on IPCO/IDWR/ NSCC/NRCS	??

# Current Data Components

<b>Component</b>	<b>Data source</b>	<b>Native time step</b>
Fixed-point pumping, Henrys Fork & Teton	WD01 tabular data	Monthly
Fixed-point, Mud Lake	Water-master Records	Two weeks
Offsite pumping	Water-master Records	Two weeks
		6

# Current Data Components

<b>Component</b>	<b>Data source</b>	<b>Native time step</b>
Perched river seepage	USGS gage data	Daily
Precipitation	PRISM	Monthly
Non-irrigated Recharge	Calc. from PRISM	Monthly*
Soils map	RASA	Long term
Tributary underflow – Base	RASA	Average

# Current Data Components

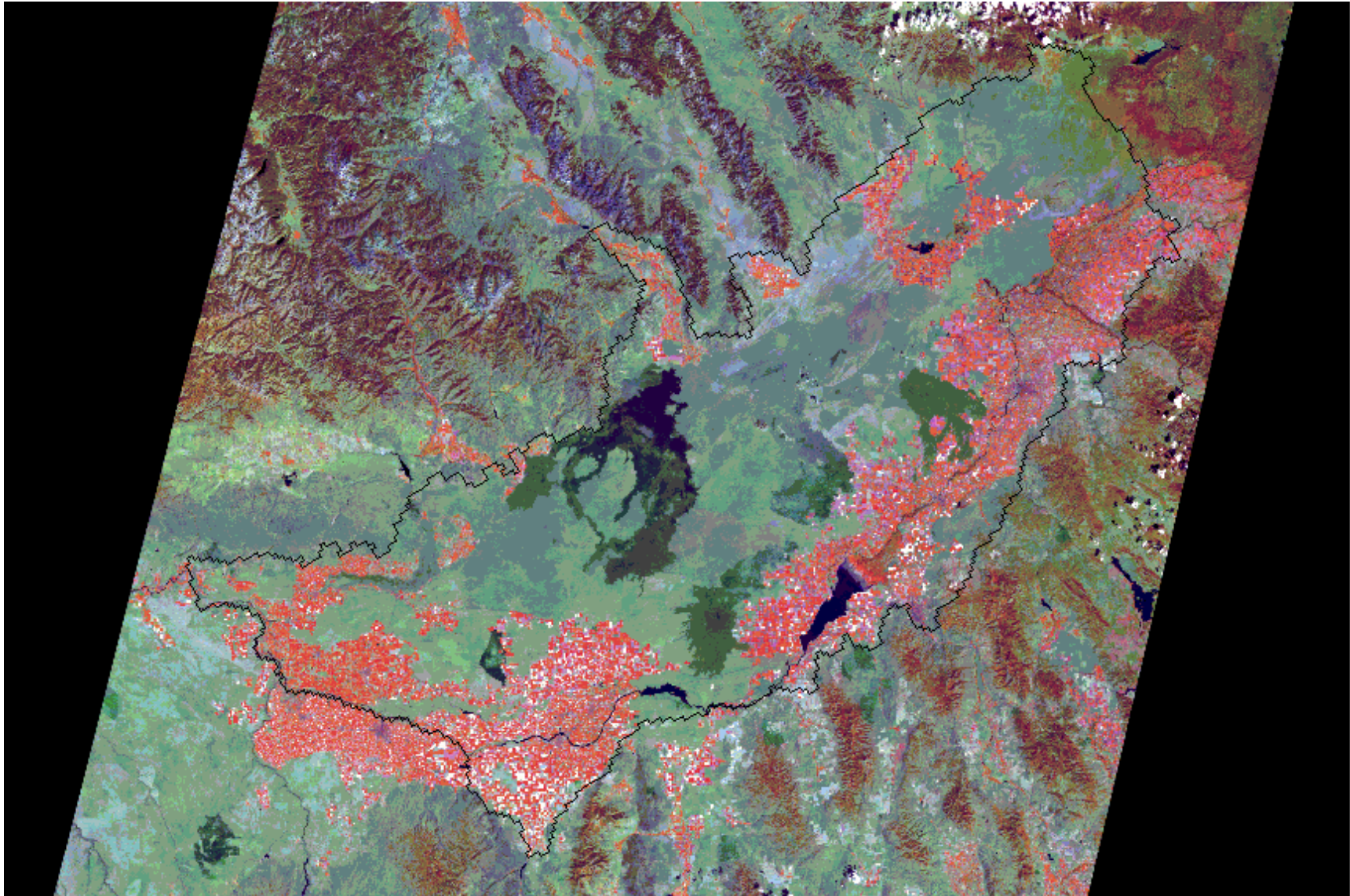
<b>Component</b>	<b>Data source</b>	<b>Native time step</b>
Tributary underflow – shaping	USGS gage (Silver Creek)	Annual*
ET	METRIC derived from LANDSAT	8 days*
Wetlands/Cities	Existing Data	(static 1990s)
Irrigated Lands	Existing Data*	(static 2000)*
		8



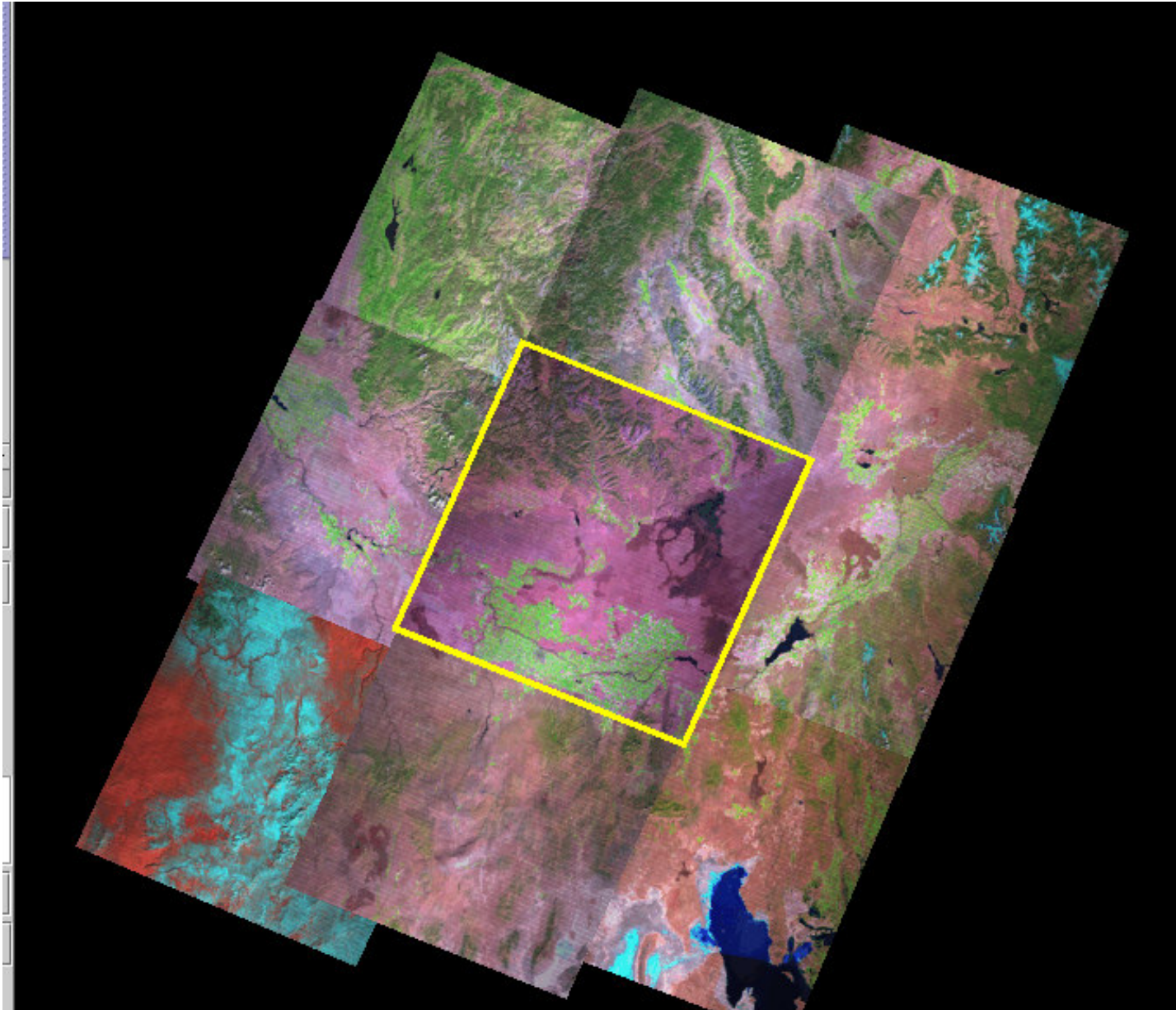
# Additional Needs

- Spatial Extent
- Other (whiteboard)

# Additional Needs – spatial extent

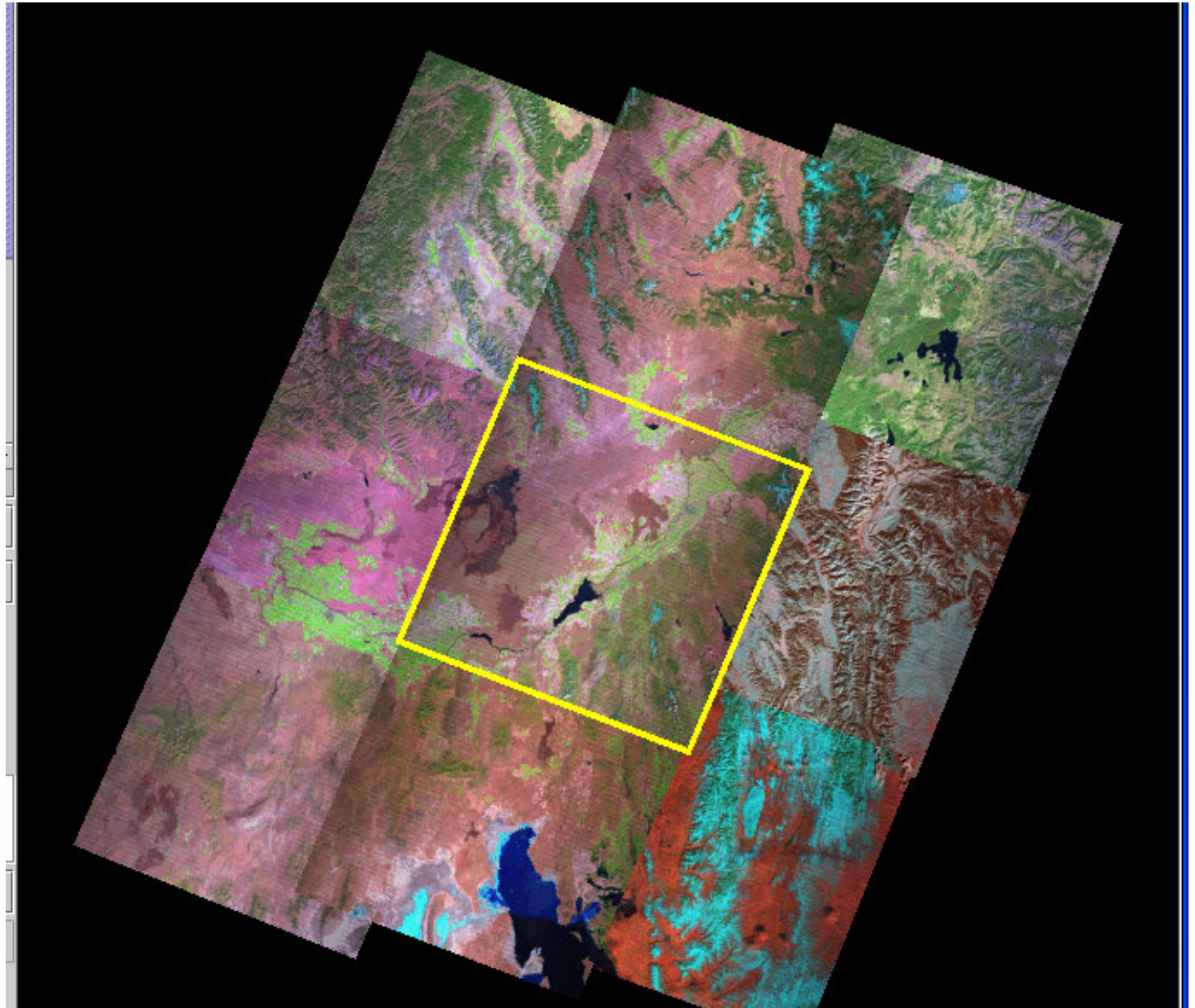


# Landsat Path 40, Row 30 – Magic Valley





# Landsat Path 39, Row 30 – Eastern Idaho



\*used w/o permission from Dr. Allen

# Additional Needs – other

(white board)

# Request for Input

- Do we contemplate major extensions of the boundary?
- Do we need to extend ET estimates for tributary-valley calculations?
- Should we manually extract daily diversions from paper or microfiche for non-Snake diversions?
- Do we need to ask for additional funding?



(end)