



2007 POD File

Allan Wylie
IDWR



2007 POD File

- ◆ Why new POD file
- ◆ Changes in new POD file
- ◆ Effect of new POD file



Why new POD file

- ◆ Water rights data base is a living document
 - Transfers happen
 - Adjudication happens



Changes in new POD file

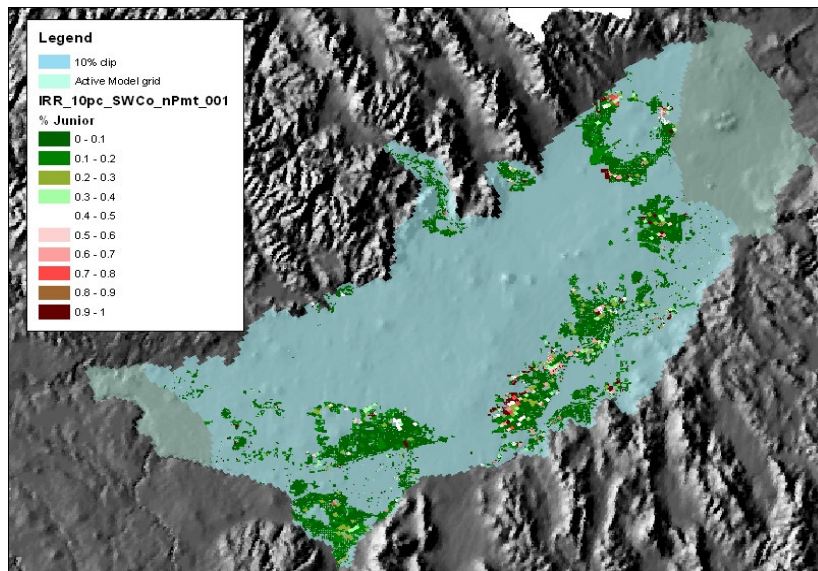


- ◆ 2006 POD file – 18567 irrigation wells
- ◆ 2007 POD file – 18524 irrigation wells

- ◆ 2006 POD file – 544 enlargements
- ◆ 2007 POD file – 623 enlargements

Test-1

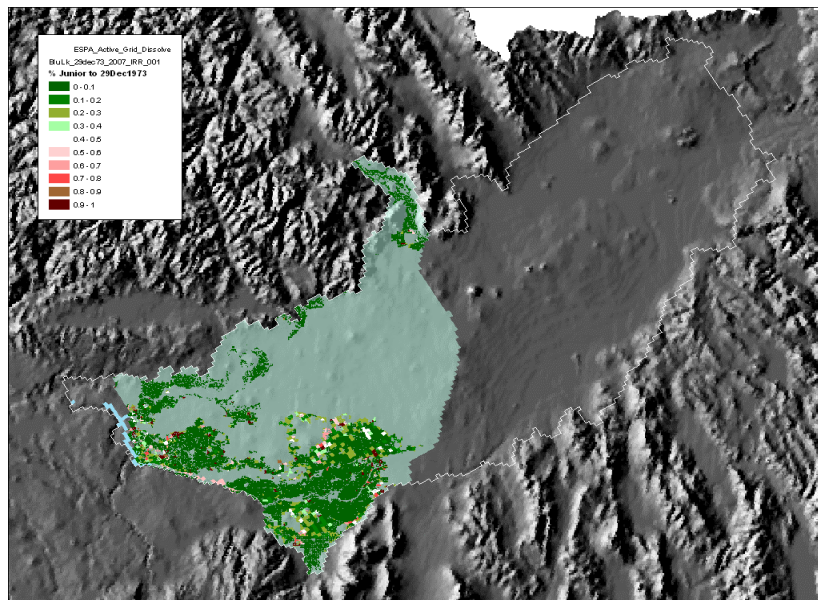
p-date=11Oct78



irr_area		Depletion		ft/ac/yr
514,322,096	m^2	31,040,252	ft^3/d	2.047907
127,091	ac	260,271	ac-ft/y	
reach	cf/d gain	cfs gain	ac-ft/y	nBf-Mini
A-R	2745217	31.8	23,019	
H-S	1671809	19.3	14,018	
S-B	5336151	61.8	44,743	
B-N	1.42E+07	164.9	119,428	
N-M	1987893	23.0	16,668	136,096
DWB-BUL	2763935	32.0	23,175	
BUL-KSP	1003938	11.6	8,418	
KSP	628985.7	7.3	5,274	
KSP-MLD	67949.89	0.8	570	
MLD	569546.4	6.6	4,776	
MLD-BAN	21693.83	0.3	182	
sum	31,040,253	359	260,271	
	0.38%	difference irrigated area		
	0.31%	difference depletions		
	-0.13%	difference gains nr Blackfoot-Minidoka		

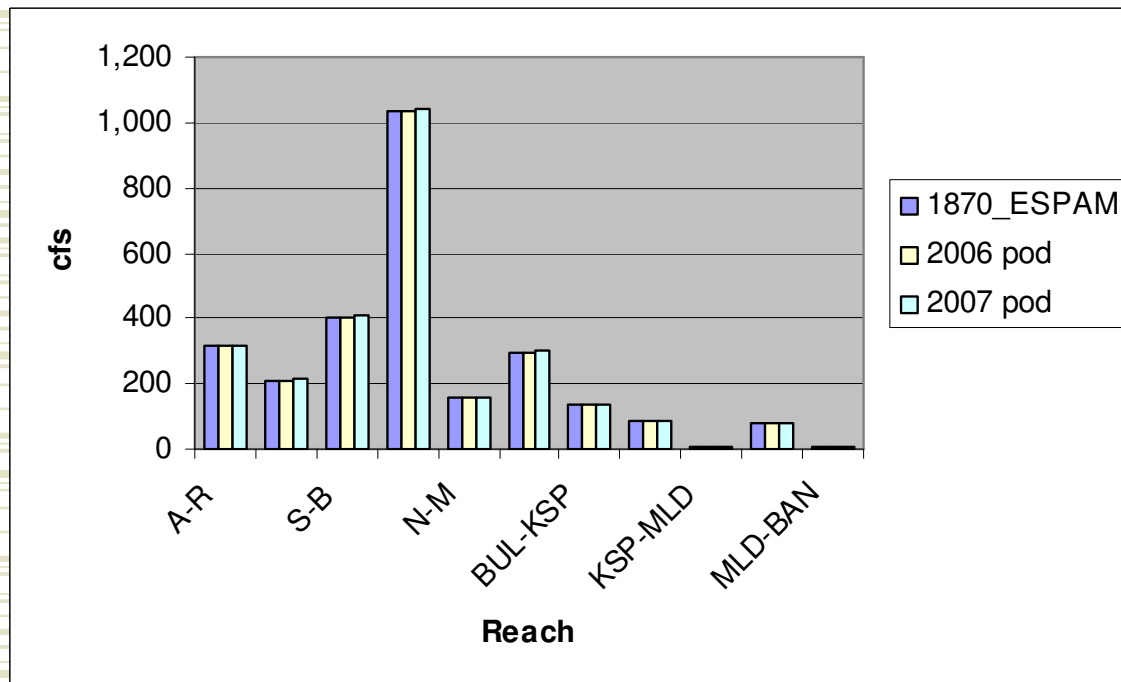
Test-2

p-date=29Dec1973



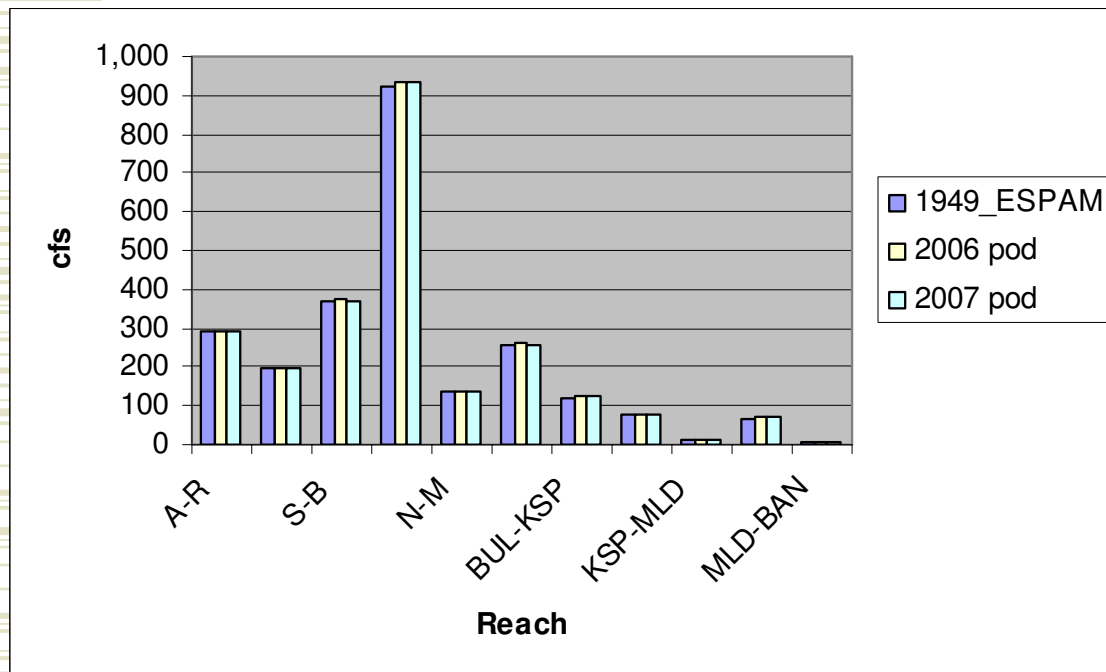
irr_area		Depletion		ft/ac/yr
350,139,250	m^2	23,015,618	ft^3/d	2.230499
86,521	ac	192,985	ac-ft/y	
reach	cf/d gain	cfs gain	ac-ft/y	
MLD-BAN	77640.02	0.9	651	
MLD	1615816	18.7	13,549	
KSP-MLD	217212.6	2.5	1,821	
KSP	1824256	21.1	15,296	
BUL-KSP	2777184	32.1	23,287	
DWB-BUL	5650586	65.4	47,380	
A-R	234250.5	2.7	1,964	
H-S	263576.3	3.1	2,210	
S-B	1878010	21.7	15,747	
N-M	2155264	24.9	18,072	
B-N	6321824	73.2	53,008	
sum	23,015,619	266	192,985	
	0.36%	difference irrigated area		
	0.35%	difference depletions		
	0.62%	difference gains nr Devils Washbowl to Buhl		

Test-3 Curtailment Scenario



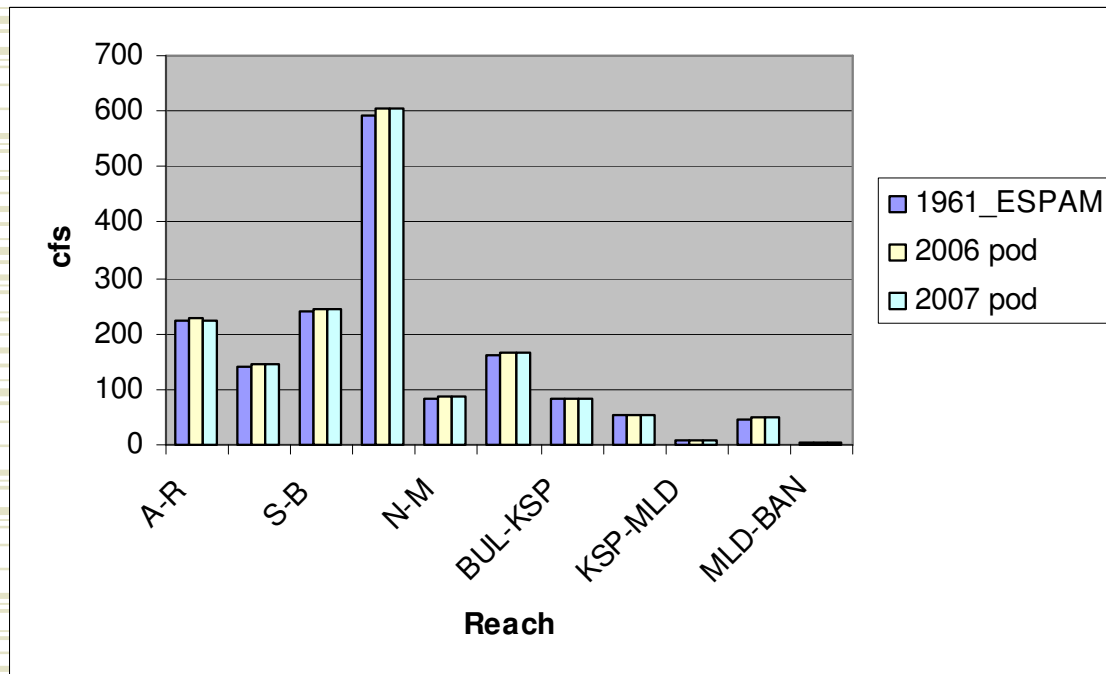
reach	cfs	difference
A-R	315.54	0.030%
H-S	210.56	0.031%
S-B	405.55	0.026%
B-N	1034.53	0.026%
N-M	157.96	0.028%
DWB-BUL	298.00	0.029%
BUL-KSP	136.95	0.024%
KSP	89.01	0.024%
KSP-MLD	10.24	0.025%
MLD	77.02	0.027%
MLD-BAN	5.83	0.063%

Test-3 Curtailment Scenario



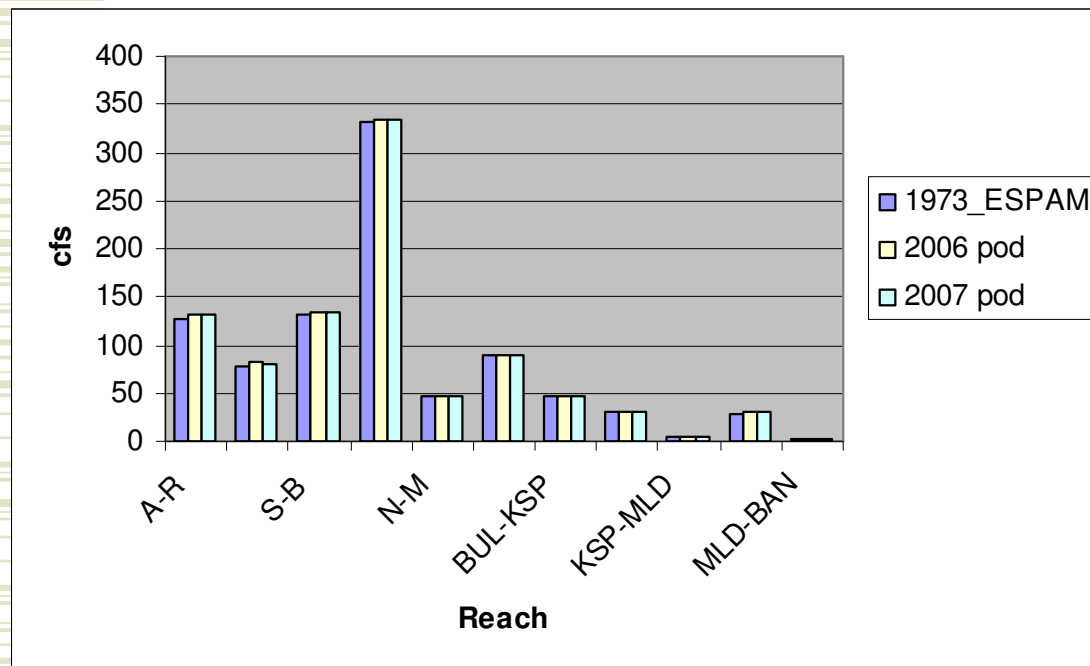
reach	cfs	difference
A-R	292.56	-0.511%
H-S	196.64	-0.491%
S-B	371.24	-0.303%
B-N	932.69	-0.287%
N-M	134.86	-0.235%
DWVB-BUL	258.37	-0.257%
BUL-KSP	122.36	-0.226%
KSP	79.84	-0.222%
KSP-MLD	9.23	-0.247%
MLD	68.48	-0.283%
MLD-BAN	5.33	-0.788%

Test-3 Curtailment Scenario



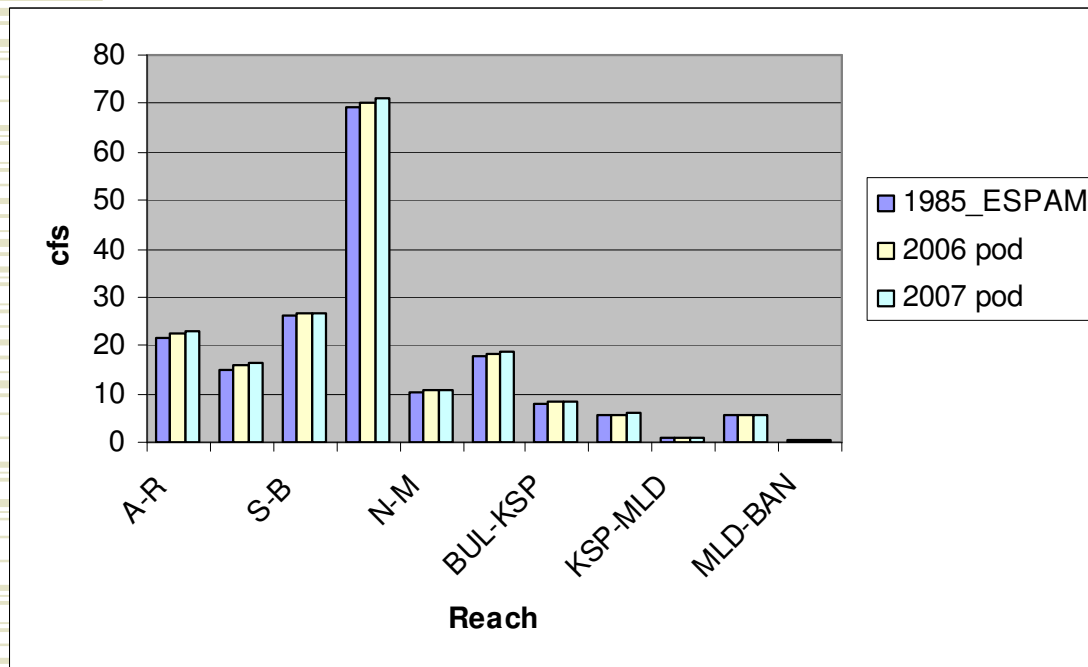
reach	cfs	difference
A-R	225.67	-0.523%
H-S	143.94	-0.476%
S-B	244.58	-0.297%
B-N	604.38	-0.200%
N-M	86.02	-0.239%
DWVB-BUL	164.94	-0.079%
BUL-KSP	82.72	-0.068%
KSP	54.68	-0.066%
KSP-MLD	6.52	-0.074%
MLD	48.39	-0.034%
MLD-BAN	3.92	-0.288%

Test-3 Curtailment Scenario



reach	cfs	difference
A-R	131.70	-0.815%
H-S	80.71	-0.617%
S-B	133.48	-0.507%
B-N	333.57	-0.260%
N-M	46.91	-0.477%
DWB-BUL	89.10	-0.157%
BUL-KSP	46.60	-0.092%
KSP	31.24	-0.105%
KSP-MLD	3.78	-0.104%
MLD	29.42	-0.048%
MLD-BAN	2.48	-0.151%

Test-3 Curtailment Scenario



reach	cfs	difference
A-R	22.86	1.954%
H-S	16.36	2.250%
S-B	26.49	-0.181%
B-N	71.03	1.232%
N-M	10.94	2.437%
DWB-BUL	18.72	3.212%
BUL-KSP	8.41	2.654%
KSP	5.91	2.315%
KSP-MLD	0.76	1.694%
MLD	5.52	0.760%
MLD-BAN	0.45	1.706%

Statistics (not weighted)

2006		2007	
average	1.010%	average	0.197%
standard dev	0.038122	standard dev	0.009373
min	-24.671%	min	-0.815%
max	6.949%	max	3.212%