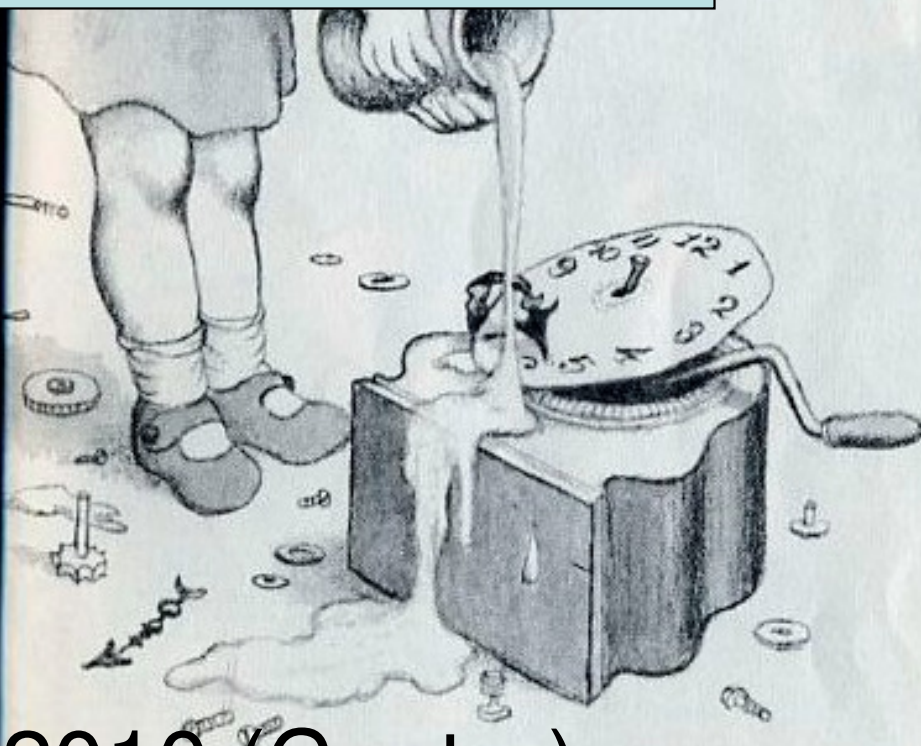
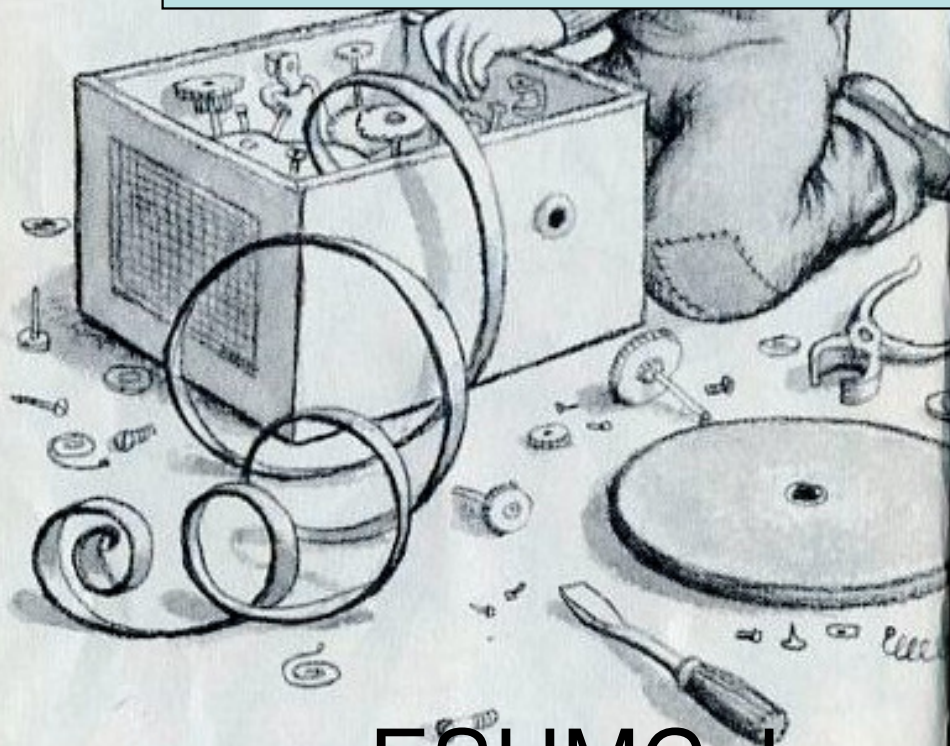


Then Lee took the victrola to pieces to make a clock, and Elinor took the clock to pieces to make a victrola. When they found neither of them would go, they went to get some olive oil to oil the machinery and took the honey jar by mistake. You can imagine how a victrola that was meant to be a clock behaved when it was gummed up with honey, even though it was the best strained honey.



Water-Budget Workshop



ESHMC June 2010 (Contor)

GOALS

- Transparency
 - ESHMC meetings & Final Report are too short for complete explanation
 - Design Documents provide limited opportunity for interaction and questions
- Demonstrate methods to generate scenarios

Options

- Live multi-day workshop at Boise
 - Allows in-person contact
 - Provides opportunity for interaction between attendees
 - Best presentation of audio & video
 - Possible "hands on" practica (can we get a lab w/ GIS licenses?)
- On-line interactive link series (one afternoon per biweek?)
 - Lower travel & materials costs
 - Allows more in-depth coverage of each topic
 - Allows time to contemplate & absorb individual topics
 - Anyone who wants can still come to Idaho

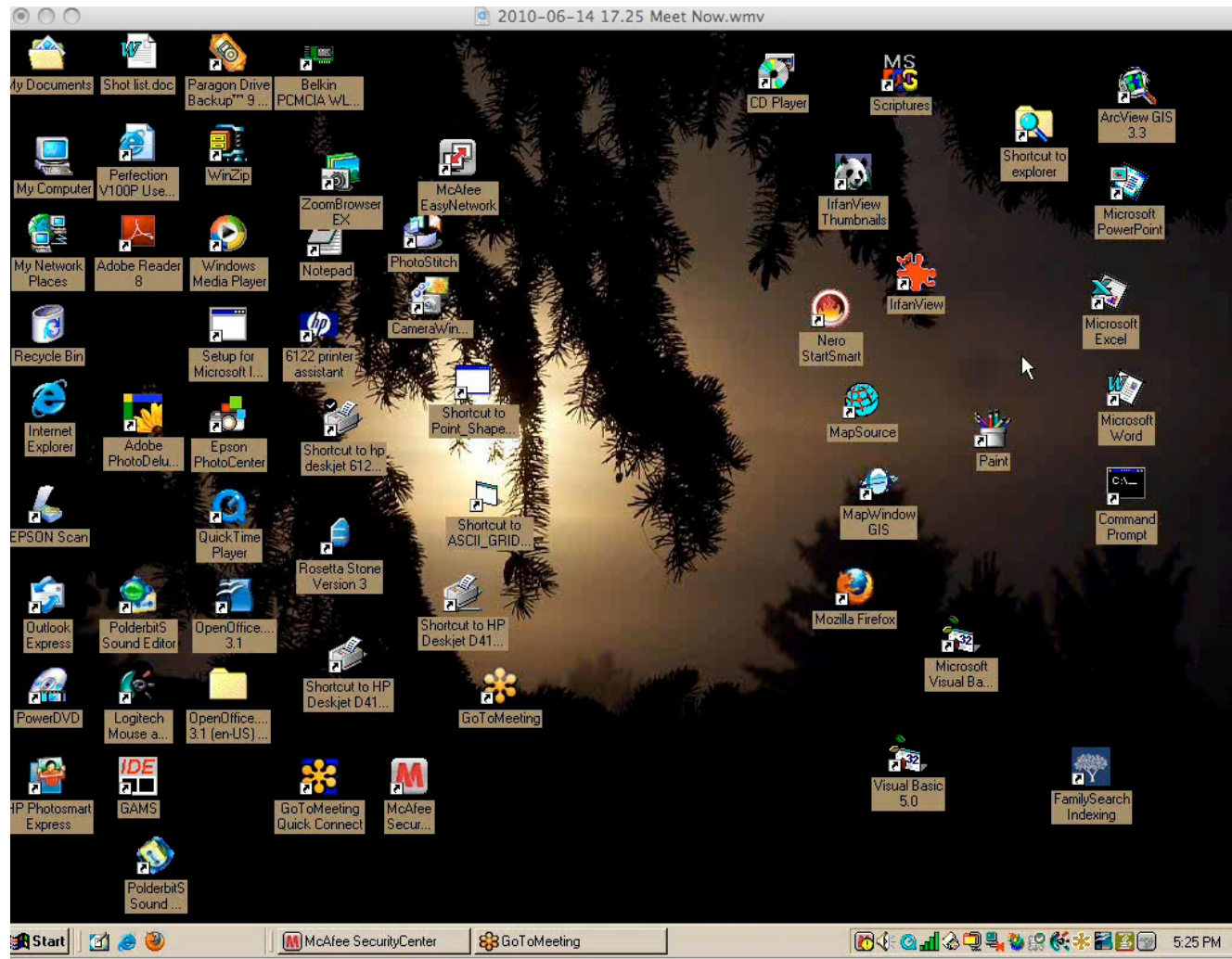
If we go the On-Line Route...

- Use U of I & Remote site bridge
 - Full video of presenters, PC or printed documents.
 - Costliest option (\$70/hour for Idaho Falls & Boise, plus charges at each remote location, could be hundreds of dollars per hour)

- Use GoToMeeting or similar
 - Dirt cheap
 - \$50-100/month for subscription (depends on number of nodes supported)
 - Long distance phone charges for audio *or* remote sites purchase USB headset & use internet for voice
 - We can record sessions
 - Any participant can share her/his desktop, for troubleshooting questions

- Use GoToMeeting or similar
 - Video limited to what is on the transmitting computer screen
 - You have to download a small app. to your computer (Windows, Mac)
 - Linux NOT SUPPORTED
 - perhaps another service besides GoToMeeting?

- Use GoToMeeting or similar
 - Live resolution is very good but recorded resolution is about the same as traditional video-conference link, and plays in a smaller window
 - We can distribute original slides
 - For live spreadsheet/GIS demonstrations we can do "screen captures" and distribute those
 - Original slides + screen captures + audio-visual recording of actual time track should allow full recapture of workshop content



Still frame from recording (You'll see live in a minute)

Turn over live to Stacey's computer

- (Brave new world)

- Final option: Hybrid
 - Live at Idaho Falls
 - "Traditional" video-conference link to Boise
 - GoToMeeting or similar available to anyone who doesn't want to travel

Discussion & ESHMC Preferences?

A photograph of a complex mechanical computer, likely an early digital computer. The image shows a dense arrangement of metal components, including gears, shafts, and a control panel with several dials and switches. The machine is housed in a metal frame, and the overall appearance is that of a highly intricate and precise piece of engineering. The text "Discussion & ESHMC Preferences?" is overlaid in white on the upper portion of the image.

Mechanical computer, courtesy Picasaweb user "Silent700"