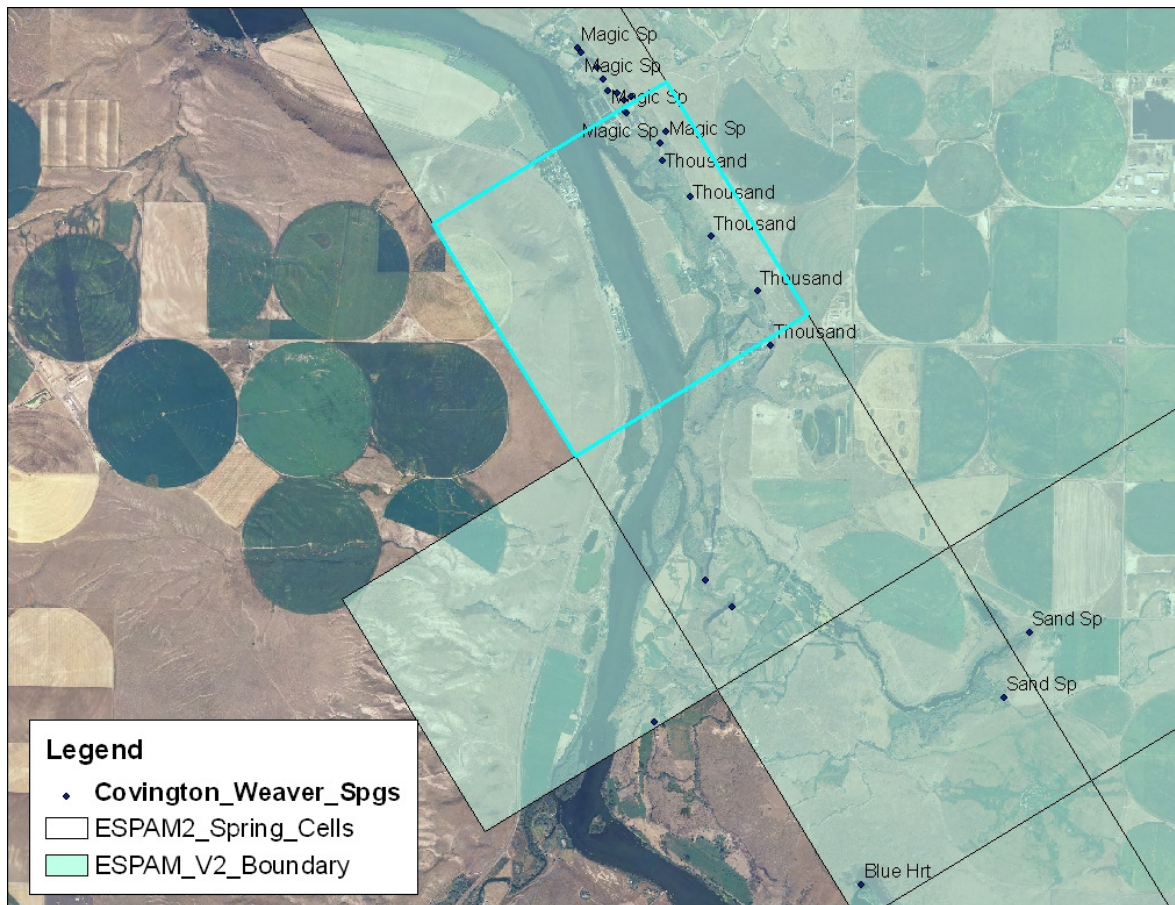
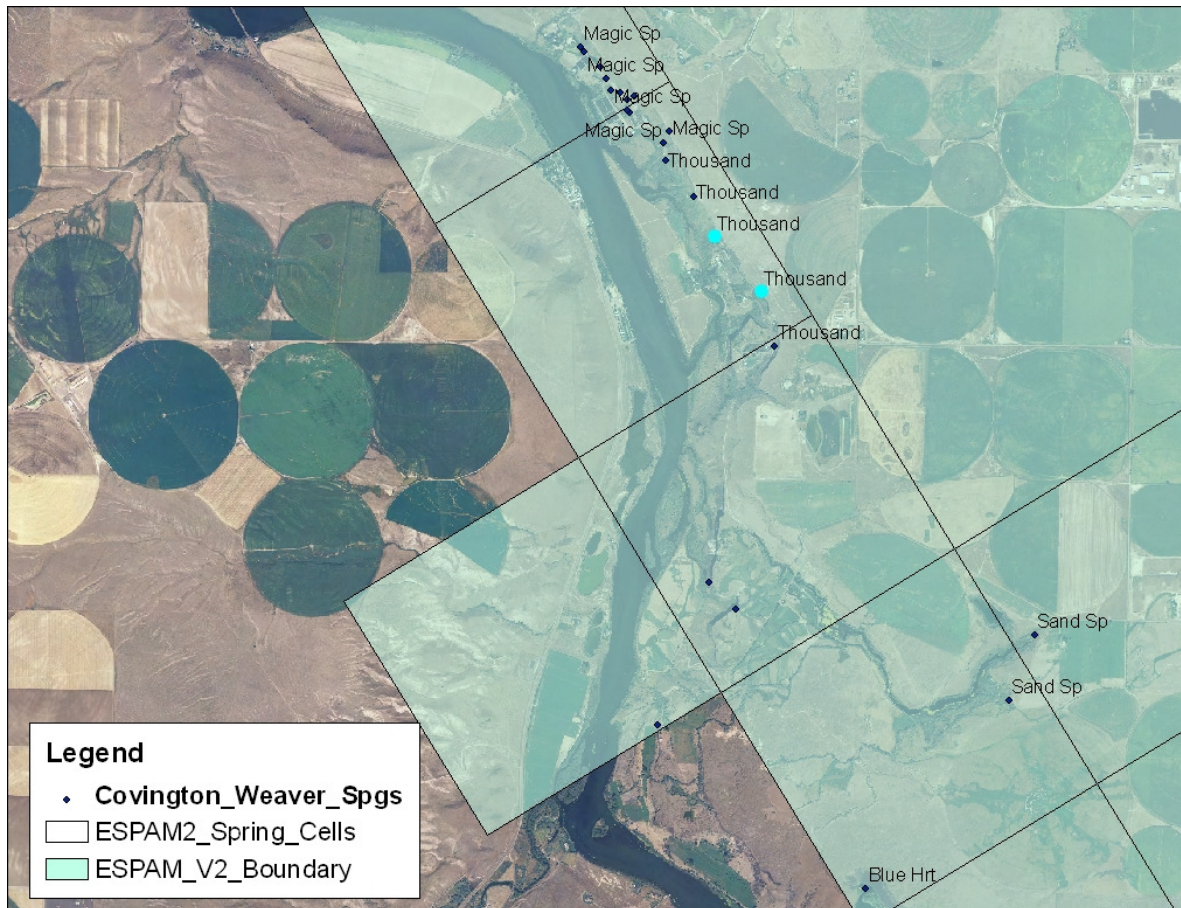


Thousand Springs Power Plant



- We have the data, now what?
 - Three drain cells per model cell apportioned by elevation
 - Model cell has 8 springs identified by Covington & Weaver
 - Elevations for these springs range from 2951-3075

Thousand Springs Power Plant



- We have the data, now what?
 - Power plant utilizes 2 of 8 springs plus some Sand Springs water
 - According to Covington and Weaver, elevation for these 2 springs ranges between 2075 and 3052
 - The data we received from IPCo is not from all the springs in the cell
 - The ESPAM1.1 target was scaled to represent all the springs