

# MEMO

**State of Idaho  
Department of Water Resources**

322 E Front Street, P.O. Box 83720, Boise, Idaho 83720-0098

Phone: (208) 287-4800 Fax: (208) 287-6700

---

**Date:** June 22, 2012  
**To:** Gary Spackman, Hearing Officer  
**cc:** Sean Vincent, Hydrology Section Manager  
**From:** Mike McVay, Hydrology Section; Liz Cresto, Hydrology Section  
**Subject:** Water-level data for wells in the Malad Basin, Oneida County, Idaho

---

This memorandum was prepared in response to an order to augment the record for the Application for Permit No. 15-7347.

The groundwater data records begin on various dates and continue until March of 2012. The following hydrographs illustrate the water-level information collected from the seven Malad Basin wells that IDWR currently monitors.

The surface water and spring data records begin on various dates and continue for varying lengths of time. All surface water flow records cease by the 1980's. Hydrographs of surface water data are contained in the spreadsheets.

Groundwater and surface water data are provided electronically in accompanying spreadsheets titled *Malad\_GW\_Data.xlsx* and *Malad\_SW\_Data.xlsx*, respectively.

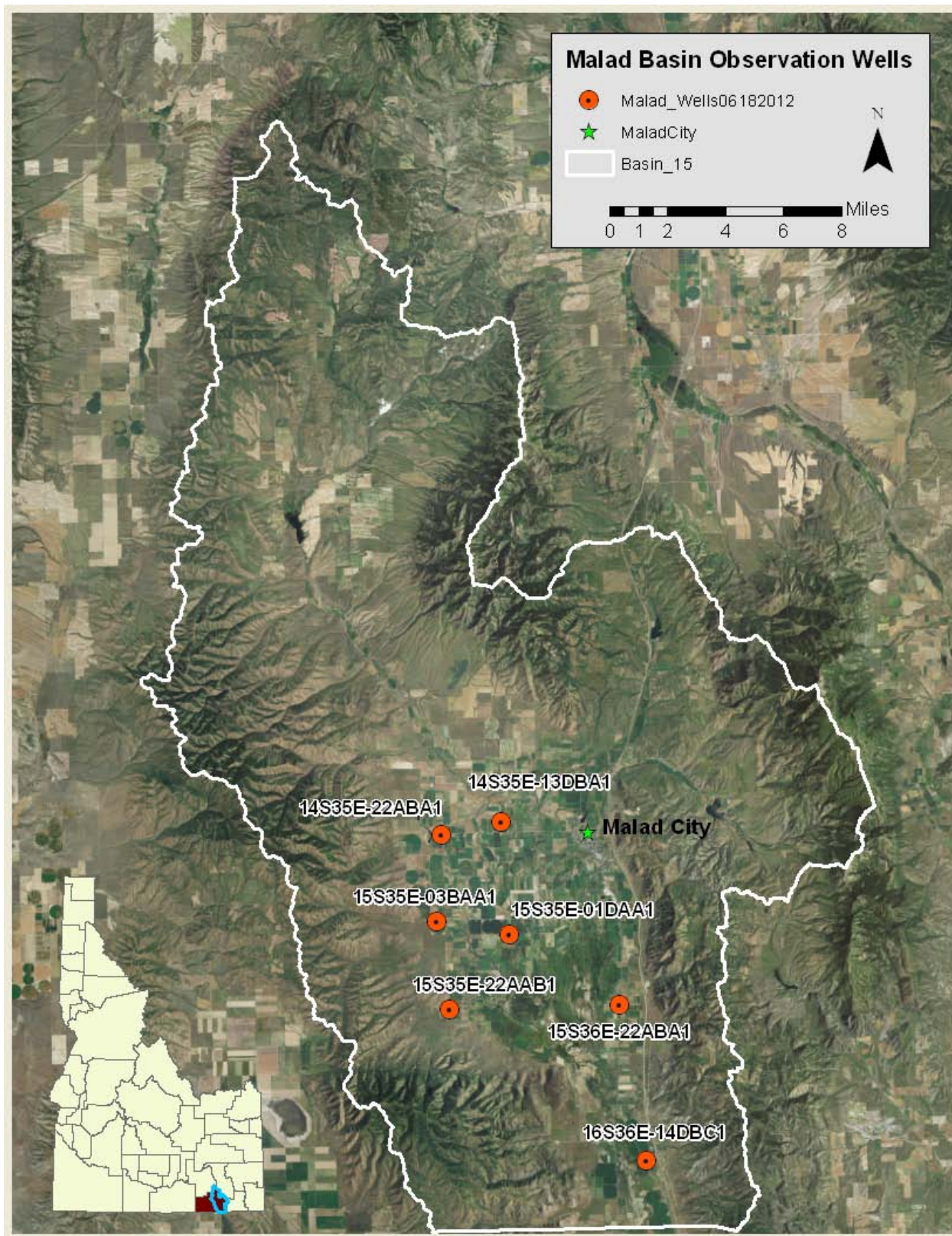


Figure 1. Location map for wells in the Malad Basin that are measured by IDWR.

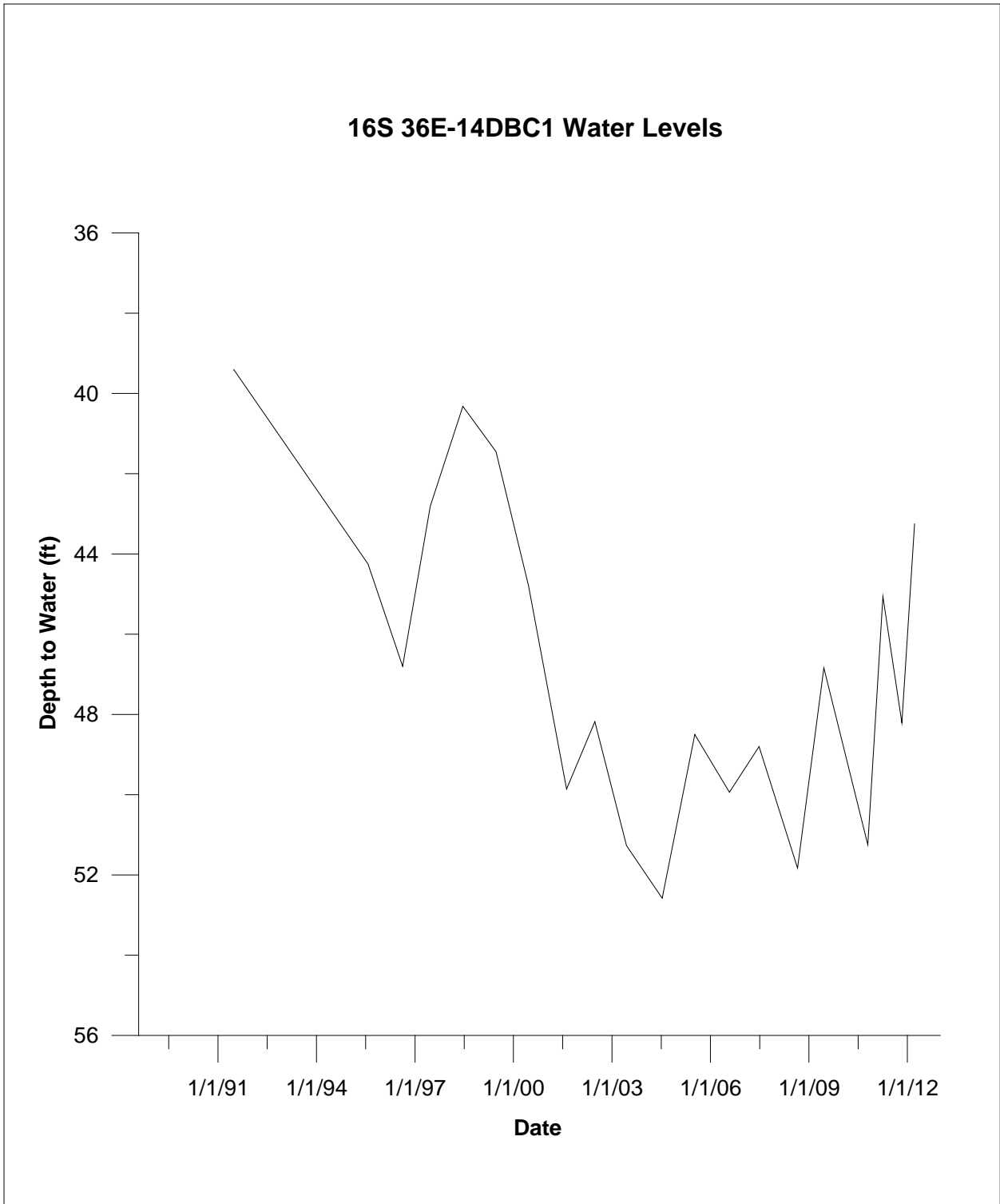


Figure 2. Water levels in well 16S 36E-14DBC1.

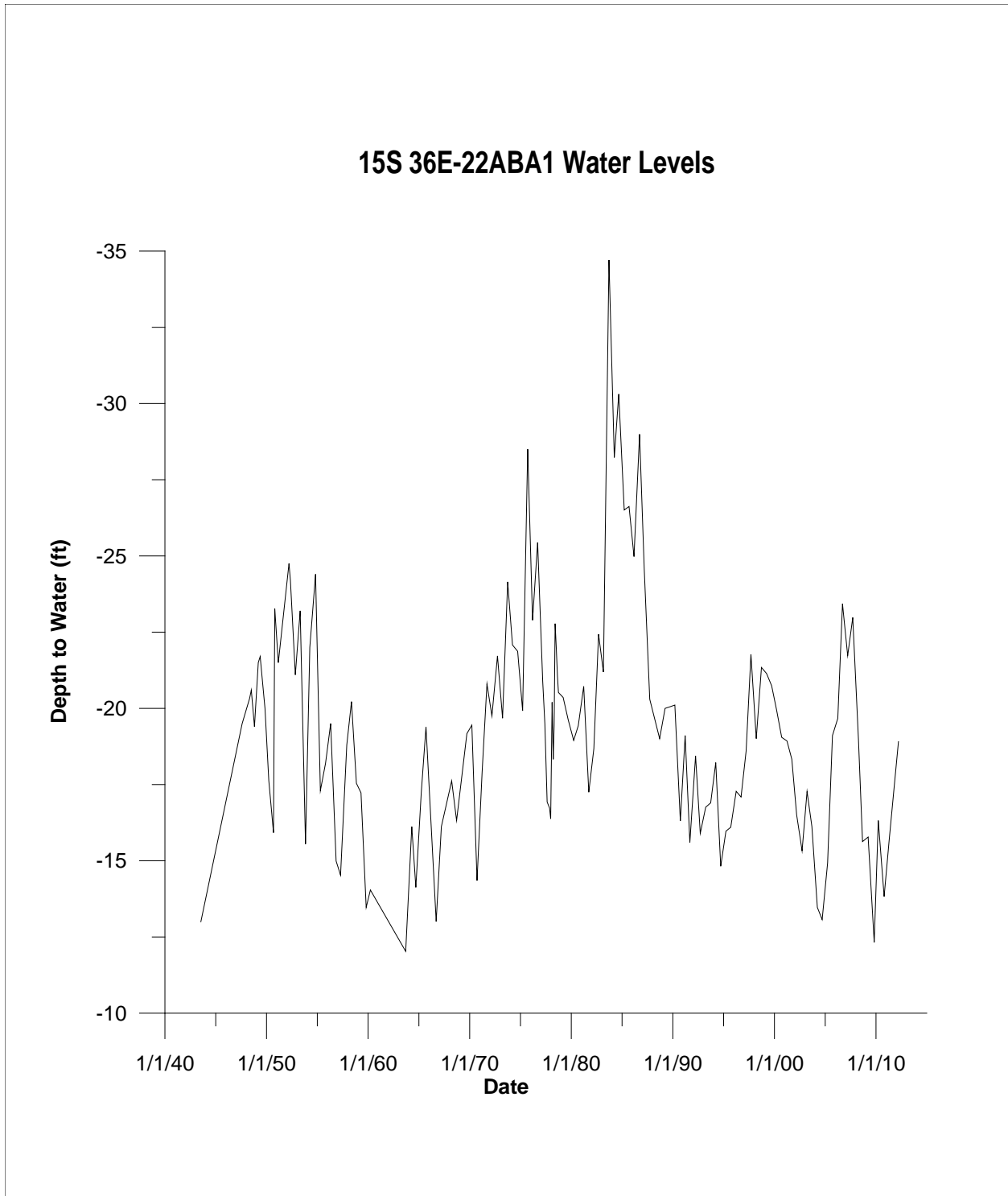


Figure 3. Water levels in well 15S 36E-22ABA1. Note that negative depths indicate that the water level is above land surface.

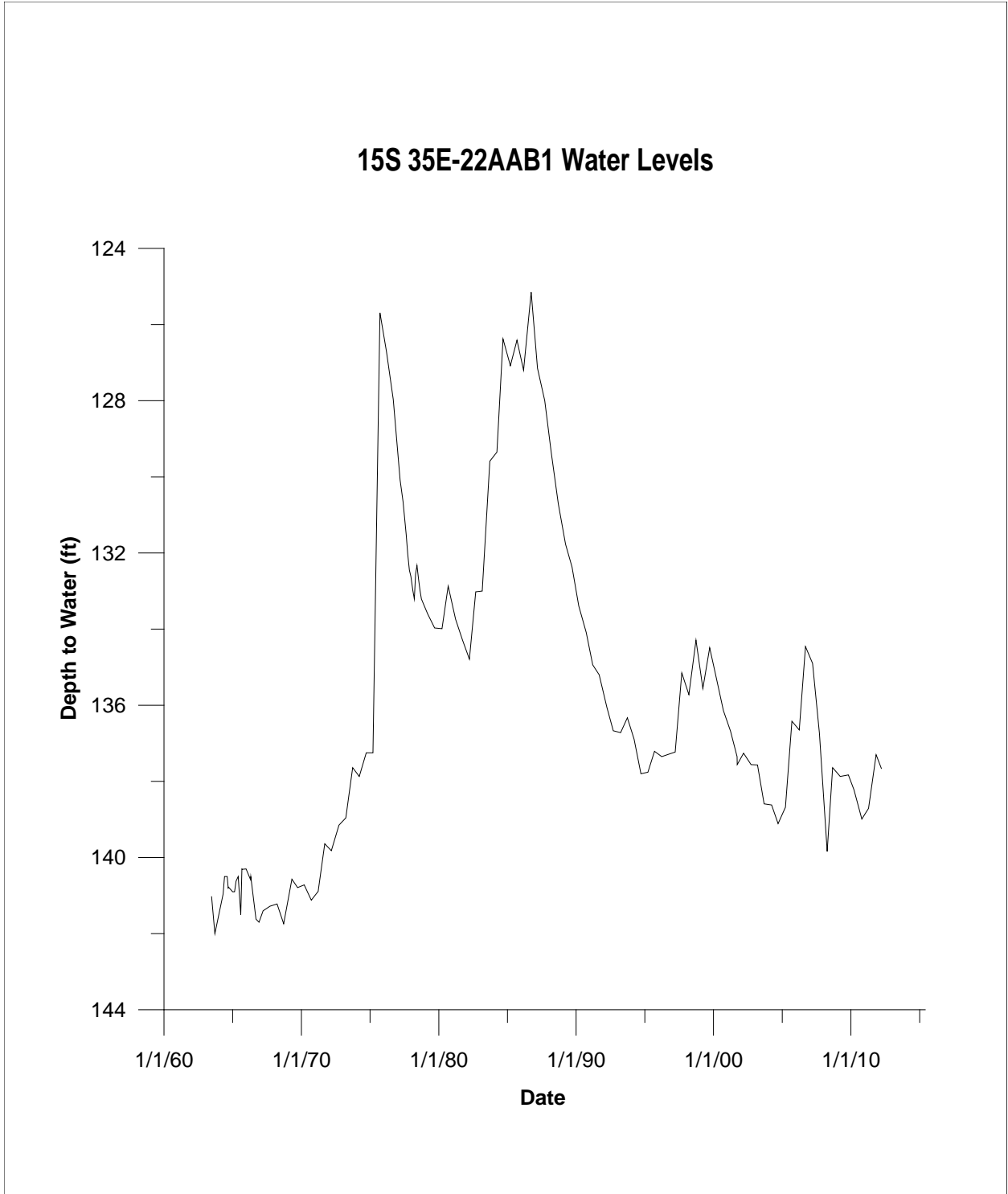


Figure 4. Water levels in well 15S 35E-22AAB1.

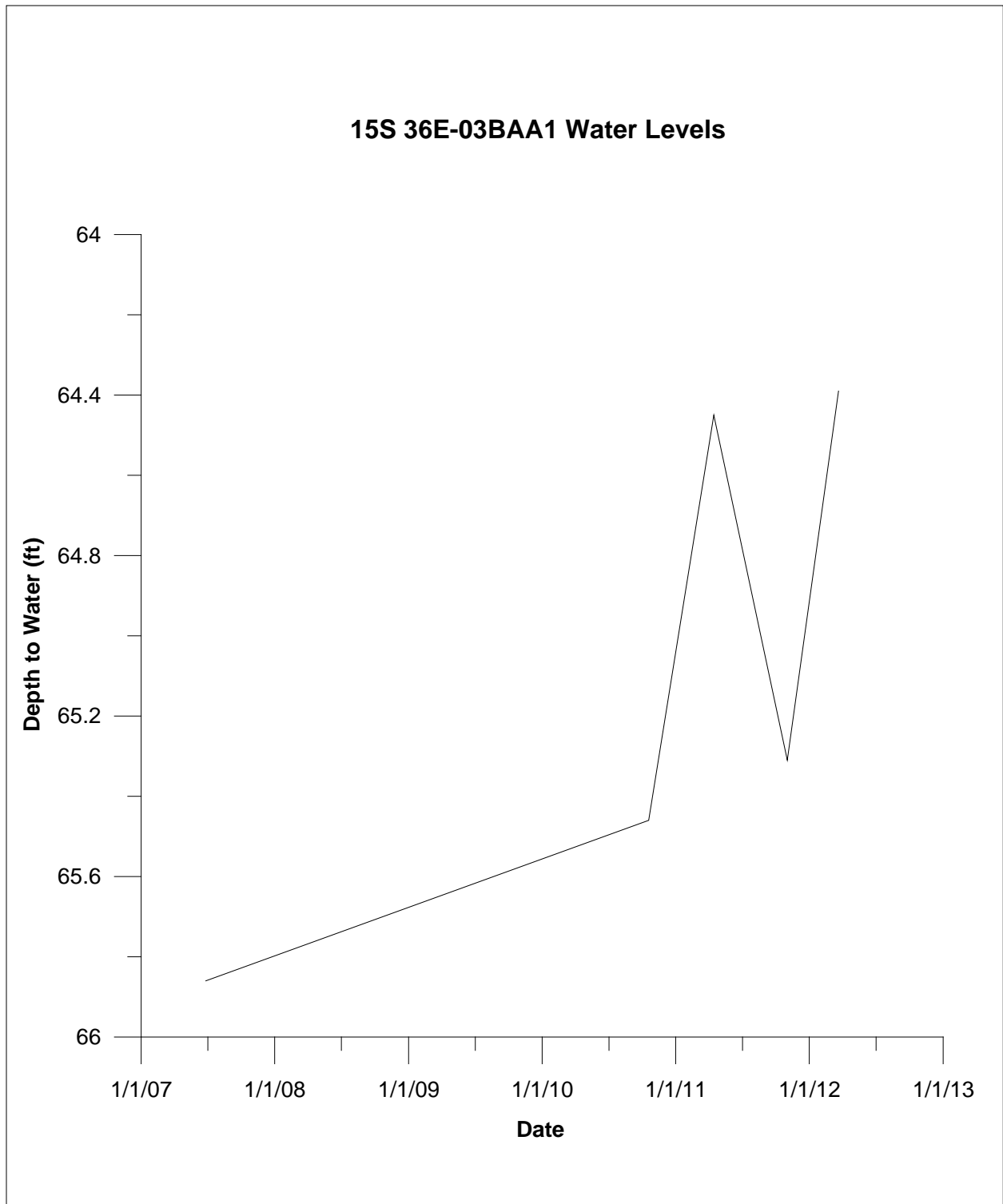


Figure 5. Water levels in well 15S 35E-03BAA1.

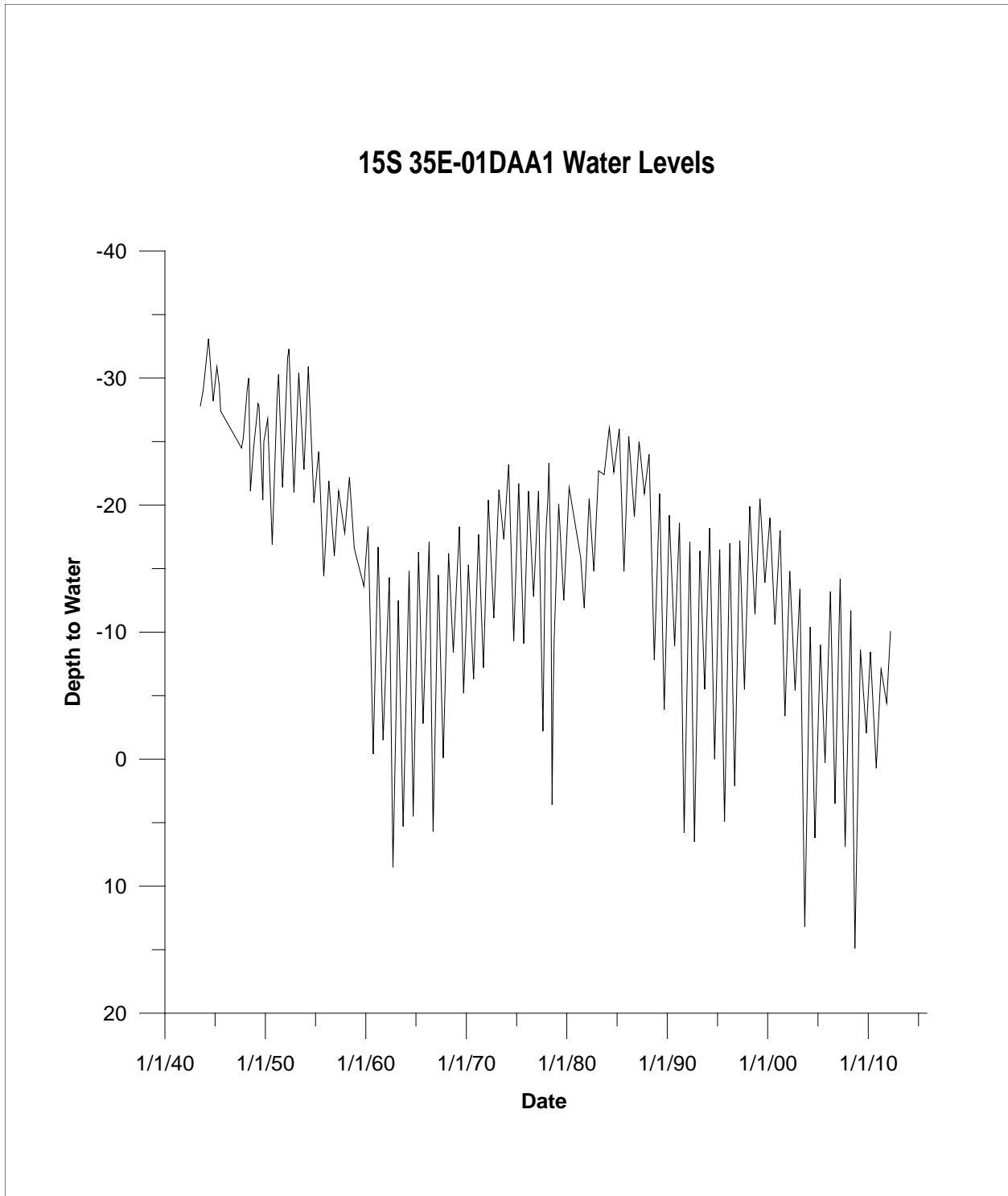


Figure 6. Water levels in well 15S 35E-01DAA1. Note that negative depths indicate that the water level is above land surface.

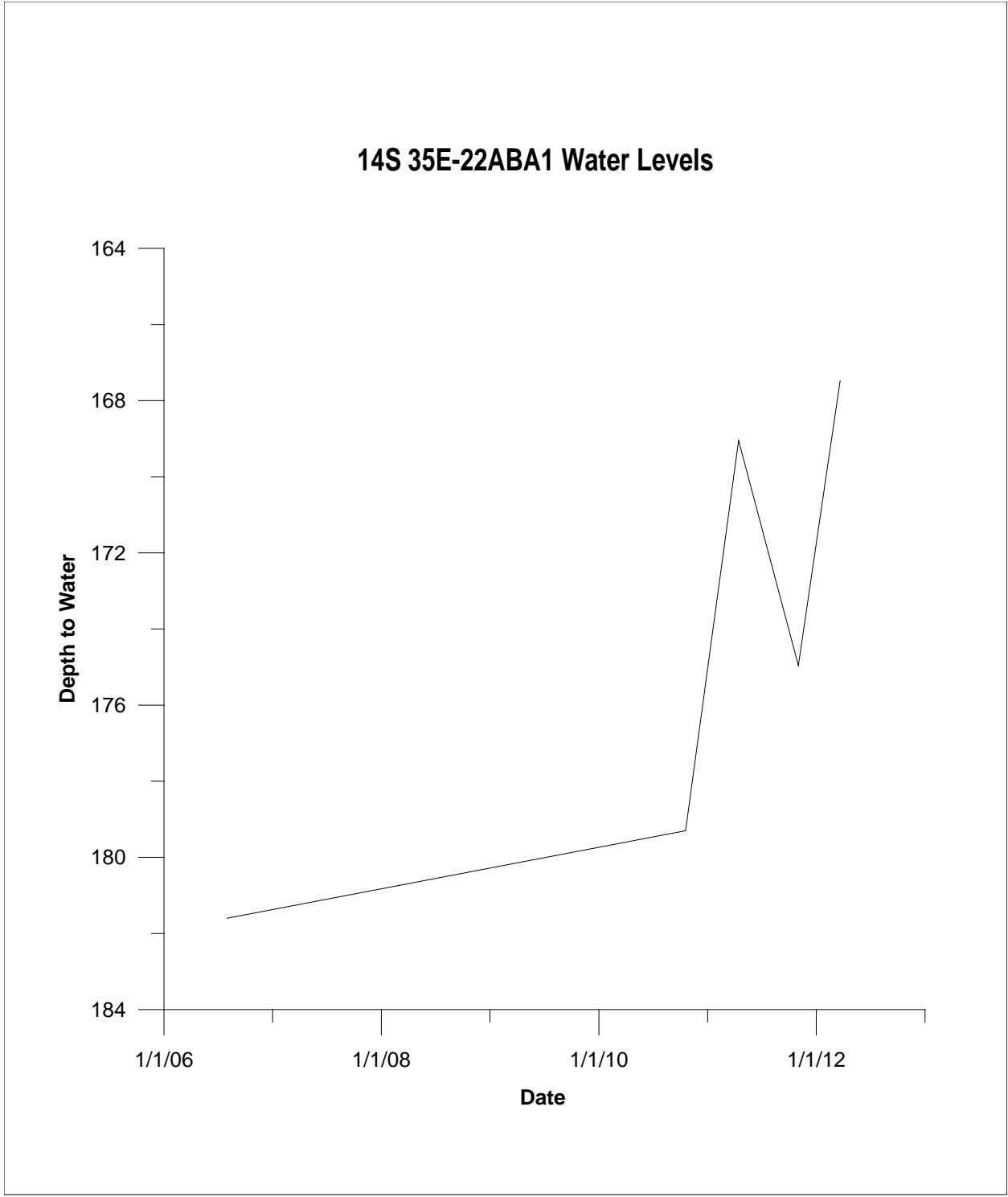


Figure 7. Water levels in well 14S 35E-22ABA1.



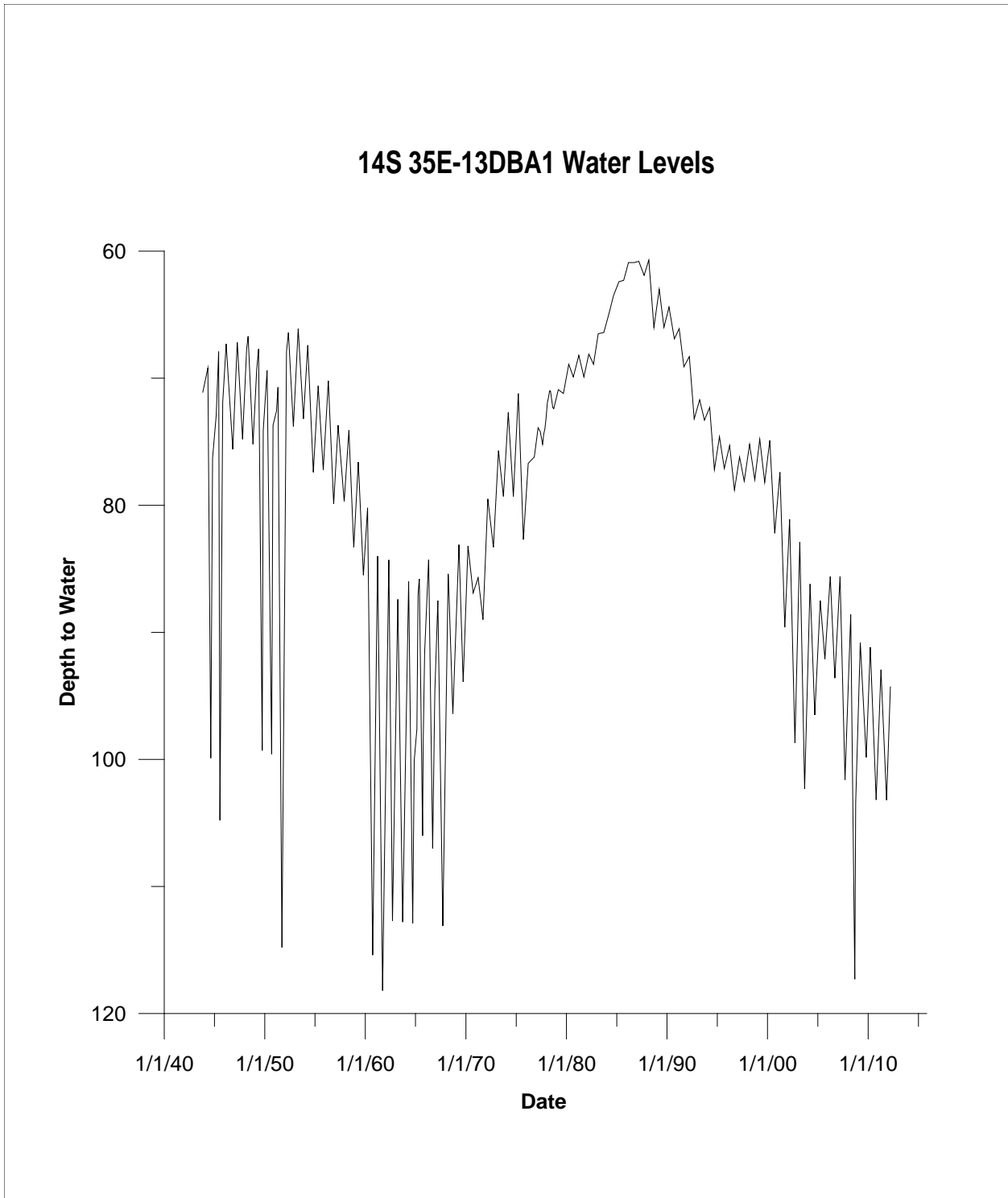


Figure 8. Water levels in well 14S 35E-13DBA1.